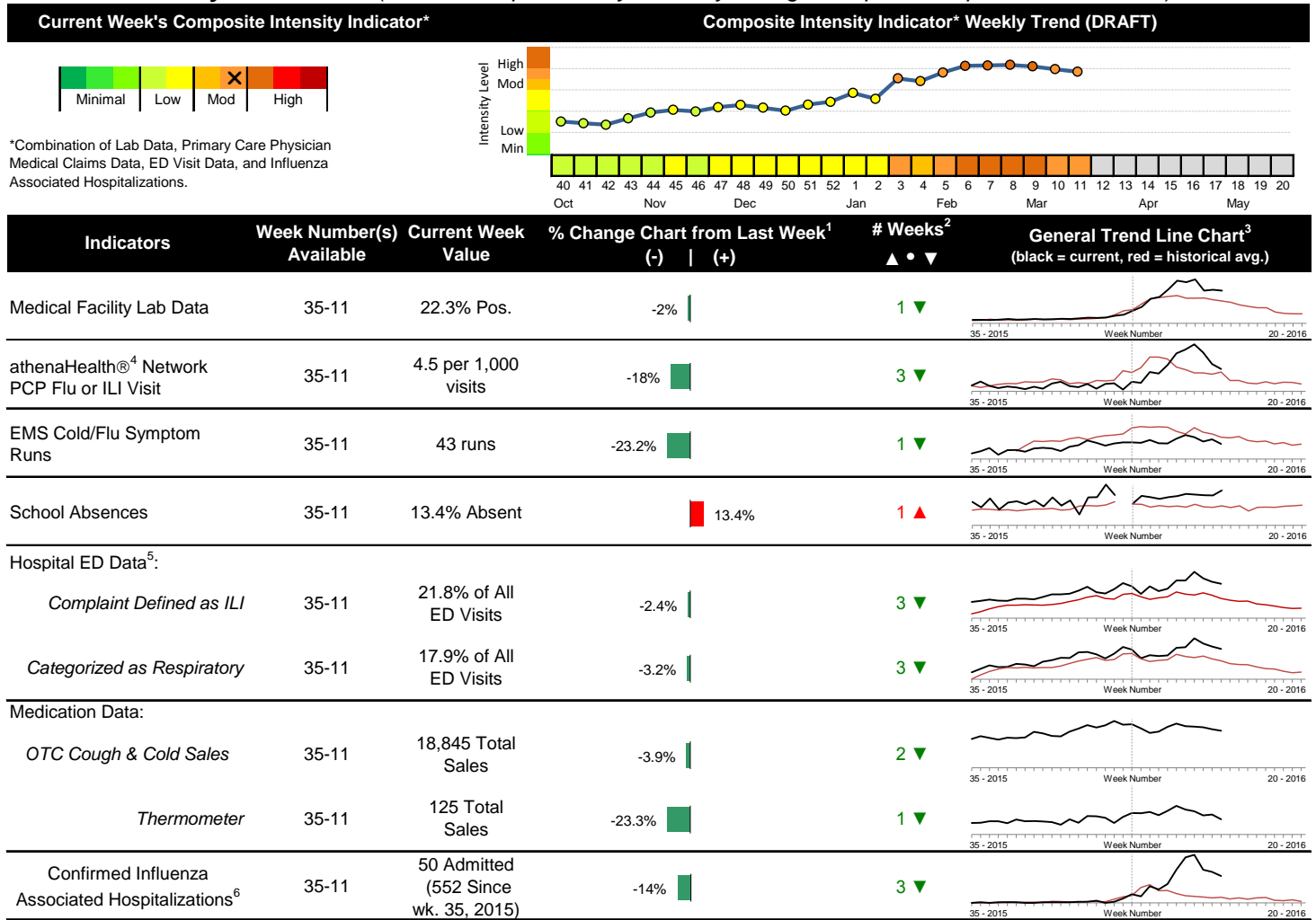


2016-2017 Columbus & Franklin County Seasonal Influenza Activity Weekly Summary (Week 11, Mar. 12th, 2017– Mar. 18th, 2017)

Highlights

- In week 11 of 2017, individual local flu activity indicator trends generally decreased, with the majority of indicators above their baseline averages. As a whole, flu intensity (composite indicator) decreased but remained elevated.
- Geographic spread and local intensity designation (Click [here](#) for definitions) = WIDESPREAD, MODERATE
- Local medical facility labs reported 2,257 tests run with 503 (22.3%) positive results for week 11 of 2017. This is close to last week's 22.8% and is higher than the weekly baseline.
- The percentage of ED visits for both influenza-like-illness (ILI) and respiratory symptoms decreased slightly compared to last week. The percentage of ED visits for both ILI and respiratory symptoms are above their respective baseline averages for the week.
- In week 11 of 2017, the trends for categories of local over-the-counter medication sales tracked were mixed (increase in chest rub sales; decrease in cough and cold, thermometer, pediatric anti-fever, and adult anti-fever sales; stable electrolyte and throat lozenge sales) compared to last week.
- Nationally, influenza activity decreased, but remained elevated in the United States. Please [visit the CDC website for specific information](#) (National data is usually updated on Friday of each week).

Local Flu Activity Dashboard *(All data are preliminary and may change as updated reports are received.)*



Reportable Conditions (Cumulative Numbers as of Mar. 23, 2017)	2012	2013	2014	2015	2016	2017 YTD
Pediatric Influenza Associated Death Reported by Year (based on date of death)	0	0	0	0	0	0
Influenza Associated Hospitalizations (IAH) Reported by Admission Year ⁶	394	301	875	448	292	558
<i>IAH comparison by Season (October - May or Weeks 35 - 20)</i>	<i>2011-12</i>	<i>2012-13</i>	<i>2013-14</i>	<i>2014-15</i>	<i>2015-16</i>	<i>2016-17</i>
<i>Current season (2016-17) is from week 35 through week 11.</i>	95	512	486	872	264	552

¹Interpret with caution. Indicators with small numbers subject to large weekly percentage fluctuations.
²Number of weeks "▲" = Increase (>2%), "▼" = Decrease (>2%), "●" = Stable (-2% to +2%).
³Black line is current years data. Based on data availability, red line is historical average (excluding pandemic year).
⁴Data Source: Medical claims data from athenaHealth® (www.athenahealth.com). Rate of Flu or ILI visits to Franklin County, OH athenaHealth® network primary care practices/physicians. Claims data are subject to filing and processing time lags. Historical data are updated when they are received.
⁵Franklin County, OH residents only (based on zipcode). NOTE: Excludes one hospital system included in the past due to technical changes affecting visit classification assignment and numbers.
⁶Confirmed cases only. Based on jurisdiction equal to Franklin County or City of Columbus and admission date available in ODRS.

Influenza Morbidity and Influenza-Like Illness (ILI) Reports

In week 11, the preliminary local influenza and influenza-like-illness (ILI) visit rate to athenaHealth® providers (4.5 per 1,000 visits) decreased compared to the previous week and is slightly above its baseline average for the week (Figure 1). The week 11 percentage of all Emergency Department (ED) visits categorized as ILI decreased slightly compared to the previous week (Figure 3) and is above its historic baseline for the week.

Nationally, during week 11 of 2016, 3.2% of patient visits reported through ILINet were due to influenza-like illness (ILI). The percentage is above the national baseline of 2.2% for week 11.

Laboratory Surveillance

During week 11 of 2017, reporting Franklin County sentinel medical facility laboratories tested 2,257 specimens, with 503 (22.3%) positive (Figure 4). The total number of tests done by local reporting labs from week 35 of 2016 through week 11 of 2017 is 39,450 with 6,072 (15.4%) positives (4,571 type A, 1,494 type B, 7 type A and B, 0 type unknown).

Nationally in week 11 of 2017, clinical laboratories reported 24,680 specimens tested for influenza viruses, 4,416 (17.9%) of which were positive (2,343 type A, 2,073 type B). Public health laboratories reported testing 1,389 specimens, 707 of which were positive (428 type A – of which 17 were A(H1N1)pdm09, 375 were A/H3, and 36 were not subtyped; 279 type B – of which 144 were Yamagata lineage, 30 were Victoria lineage, and 105 where lineage was not performed). Please visit the CDC website for more information, including cumulative data since week 40.

In week 11 of 2017, participating Ohio clinical labs reported 44,784 specimens tested for influenza this season thus far. Positive results include: (5) A(H1N1)pdm09; (516) A/H3N2; (3,470) Flu A Not Subtyped, and (2,157) Flu B (through 3/18/17). ODH Public Health Lab reported 1,028 specimens tested for influenza from various submitters this season thus far. Positive results include: (4) A(H1N1)pdm09; (663) A/H3N2; (163) Influenza B (through 3/18/17). Please visit the ODH website for more information.

ED Respiratory Visits

In the 11th week of 2017, the percentage of all ED visits categorized as respiratory decreased slightly compared to the percentage seen the previous week and is above its historic baseline for the week (Figure 5).

Over-the-Counter (OTC) Medication Sales

In week 11 of 2017, the trends for categories of local over-the-counter medication sales tracked were mixed (increase in chest rub sales; decrease in cough and cold, thermometer, pediatric anti-fever, and adult anti-fever sales; stable electrolyte and throat lozenge sales) compared to last week.

Additional Influenza Activity Web Links:

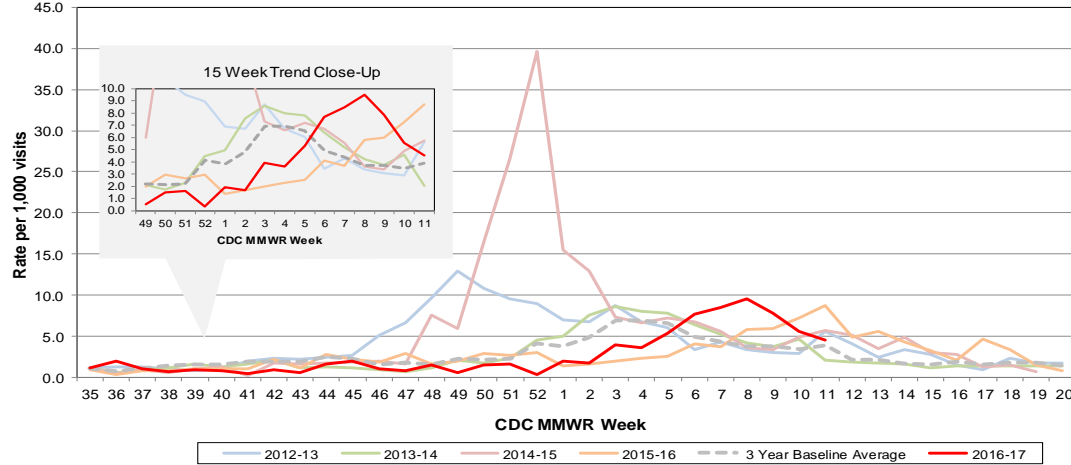
Ohio Seasonal Flu Surveillance: <https://www.odh.ohio.gov/en/features/odhfeatures/seasflu/Ohio-Flu-Activity>

CDC National Seasonal Flu Surveillance Reports: <http://www.cdc.gov/flu/weekly/>

World Health Organization Situation Updates: http://www.who.int/influenza/surveillance_monitoring/en/

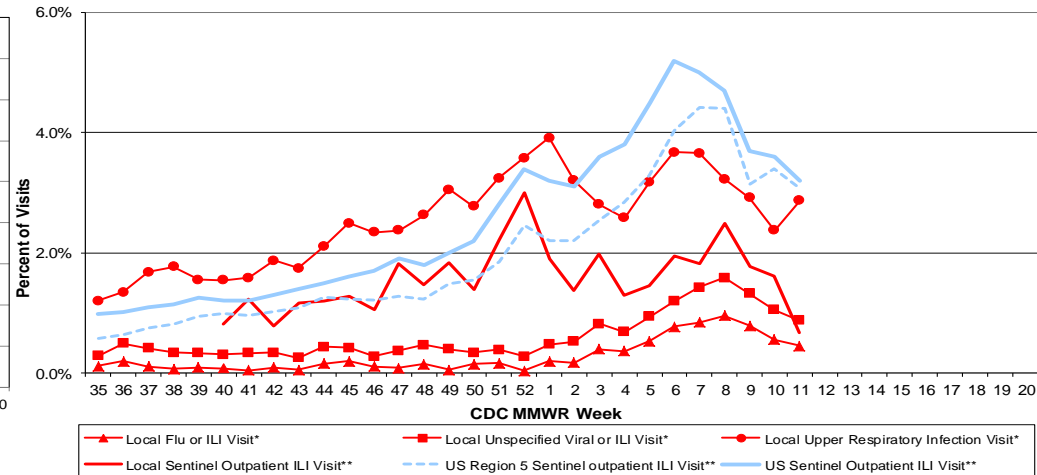
Columbus & Franklin County Influenza Monitoring Summary – Week 11, 2017 (3/12/2017-3/18/2017)

Figure 1: Local Participating Outpatient Primary Care Provider Influenza or Influenza-Like Illness Visit Rate*, Franklin County, OH



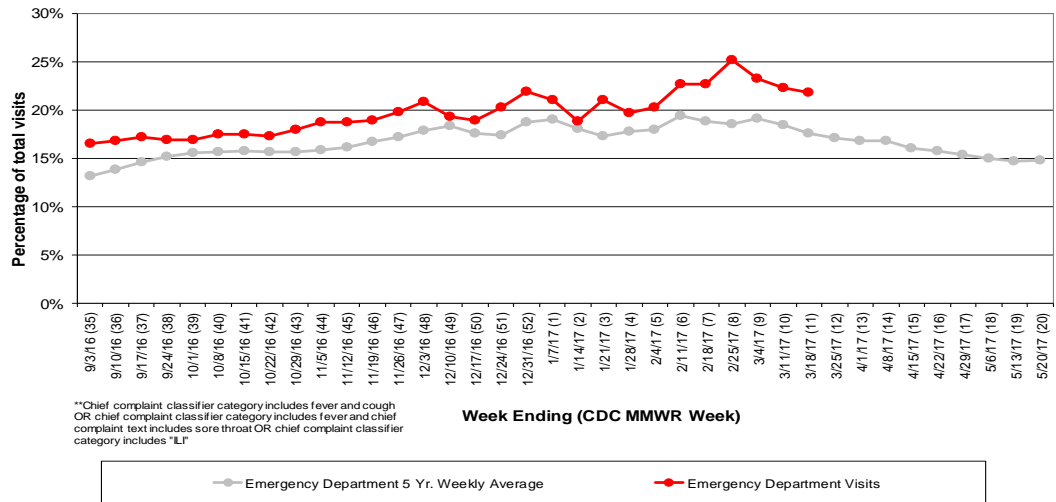
*Source: Medical Claims data from athenaHealth®
 Note: athenaHealth® claims data are subject to filing and processing time lags. Historical data are updated when they are received.

Figure 2: Percentage of Local Outpatient Participating Provider* and CDC National Outpatient Sentinel Health Care Provider Site visits for ILI and Associated Illnesses, 2016-17**



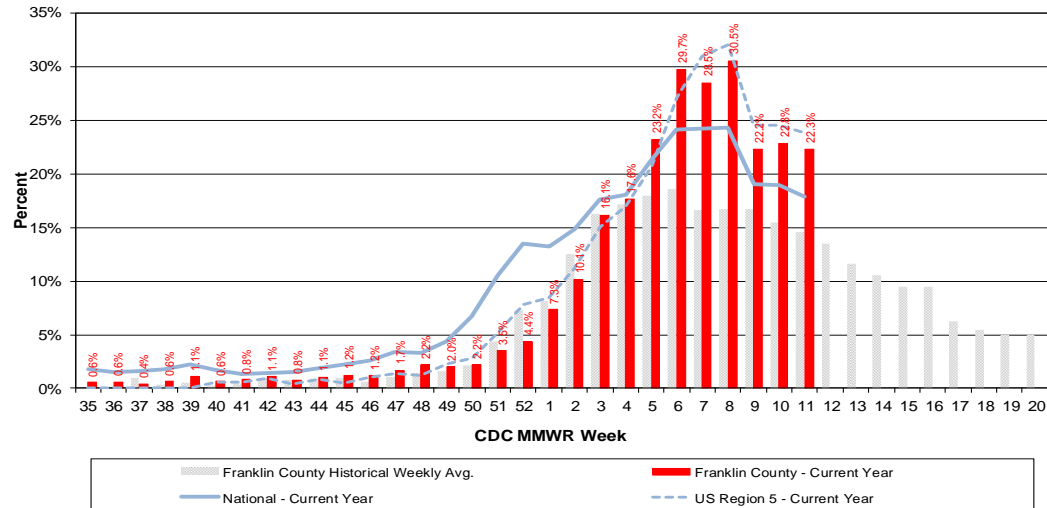
*Source: Local medical claims data provided by athenaHealth®. Data are subject to filing and processing time lags. Historical data are updated when received.
 **Source: U.S. Outpatient Influenza-like Illness Surveillance Network (ILINet) sentinel provider visits

Figure 3: Franklin County Resident ILI Defined ED Visits, 2016-17, Franklin County, OH**



**Chief complaint classifier category includes fever and cough
 OR chief complaint classifier category includes fever and chief complaint text includes sore throat OR chief complaint classifier category includes "LI"

Figure 4: Percentage of Local Reporting and National Laboratory Positive Influenza Tests by Week, 2016-17



Columbus & Franklin County Influenza Monitoring Summary – Week 11, 2017 (3/12/2017-3/18/2017)

Figure 5: Franklin County Resident Respiratory ED Visits, 2016-17, Franklin County, OH

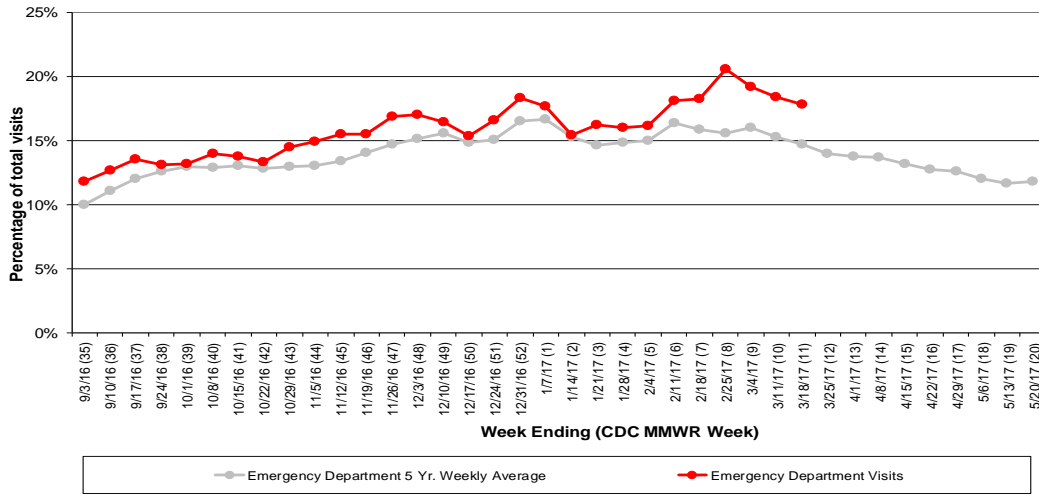


Figure 6: Selected Number of Over-the-Counter Medication Sales, 2016-17, Franklin County, OH

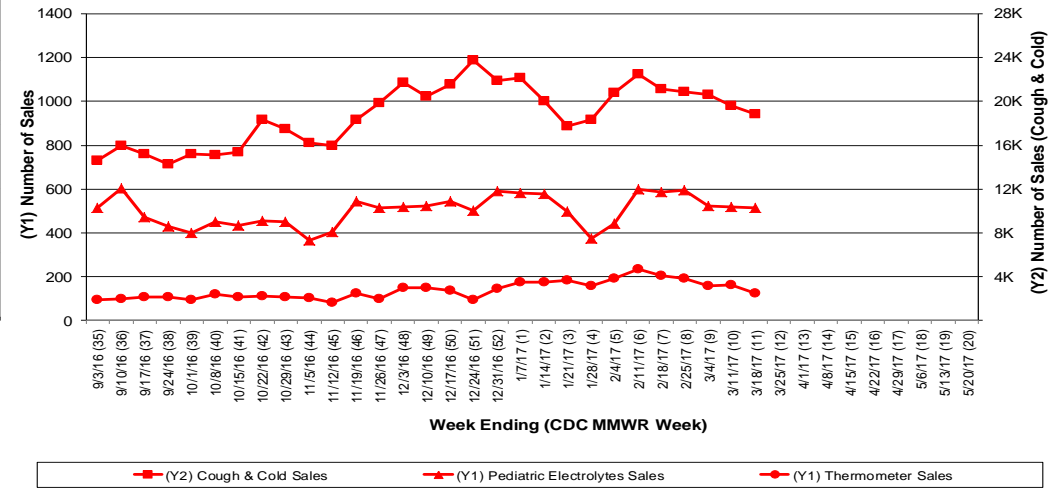
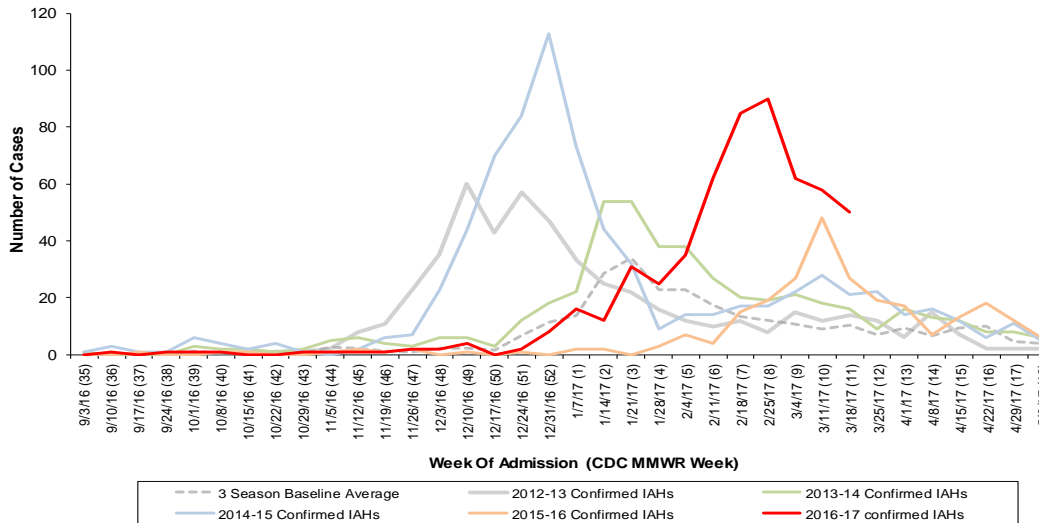


Figure 7: Franklin County Confirmed Influenza Associated Hospitalizations by Hospital Admission Week (As of 3/23/2017)



Franklin County, OH, Confirmed Influenza Hospitalization Cumulative Rates (per 100,000) by Age-Group and Admission Week, 2016-2017 Season

