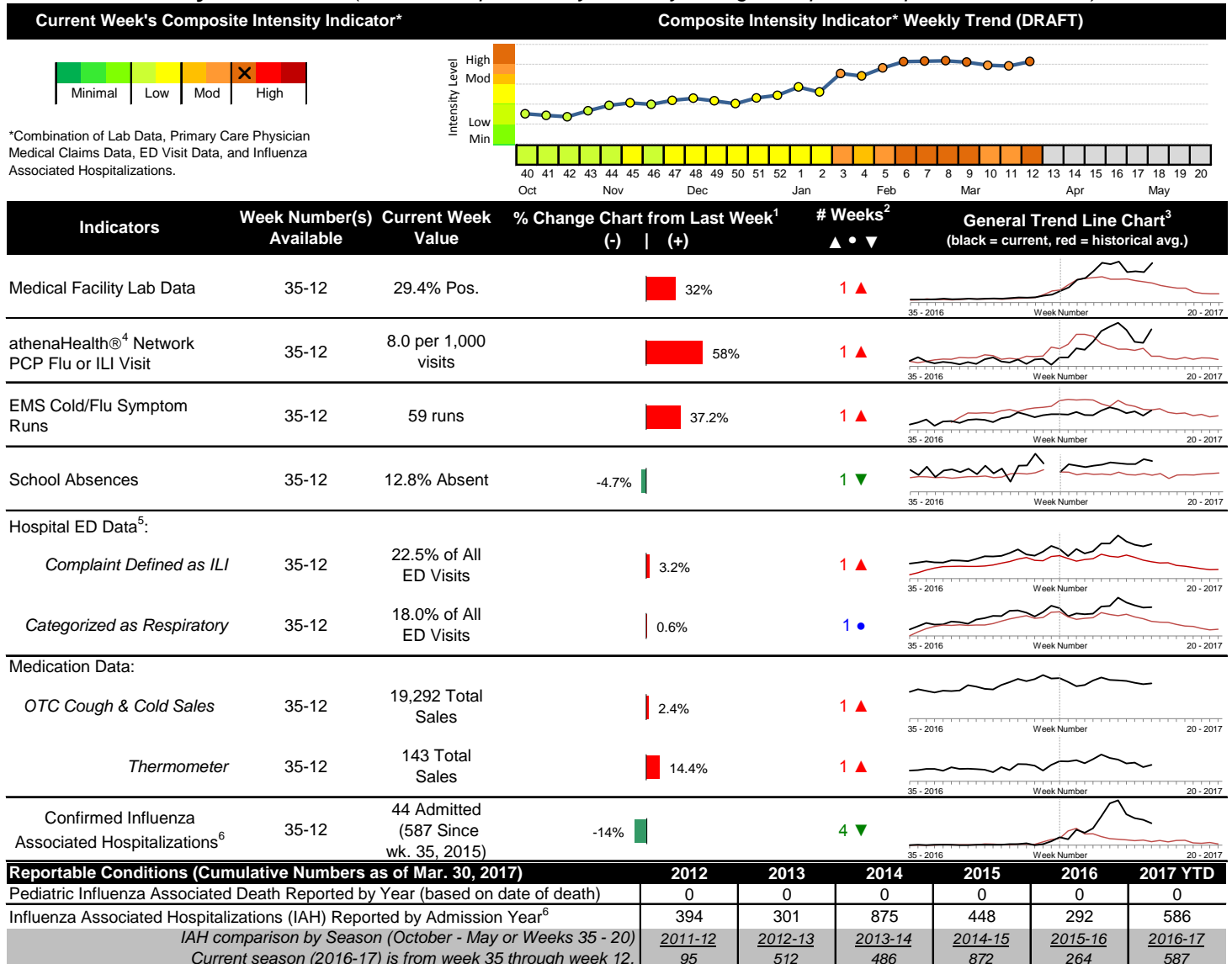


# 2016-2017 Columbus & Franklin County Seasonal Influenza Activity Weekly Summary (Week 12, Mar. 19<sup>th</sup>, 2017– Mar. 25<sup>th</sup>, 2017)

## Highlights

- After a few weeks of decreases, flu intensity (composite indicator) increased in week 12 of 2017. Notable indicator increases included lab positives, primary care physician visits, and ED visits.
- Geographic spread and local intensity designation (Click [here](#) for definitions) = WIDESPREAD, HIGH
- Local medical facility labs reported 2,508 tests run with 738 (29.4%) positive results for week 12 of 2017. This is higher than last week's 22.3% and is higher than the weekly baseline.
- The percentage of ED visits for influenza-like-illness (ILI) increased, while respiratory symptom visits were stable compared to last week. The percentage of ED visits for both ILI and respiratory symptoms are above their respective baseline averages for the week.
- In week 12 of 2017, the trends for categories of local over-the-counter medication sales tracked were mixed (increase in cough and cold, thermometer, pediatric anti-fever, and throat lozenge sales; decrease in electrolyte, chest rub, and adult anti-fever sales) compared to last week.
- Nationally, influenza activity remained elevated in the United States. Please [visit the CDC website for specific information](#) (National data is usually updated on Friday of each week).

## Local Flu Activity Dashboard (All data are preliminary and may change as updated reports are received.)



<sup>1</sup>Interpret with caution. Indicators with small numbers subject to large weekly percentage fluctuations.

<sup>2</sup>Number of weeks "▲" = Increase (>2%), "▼" = Decrease (>2%), "●" = Stable (-2% to +2%).

<sup>3</sup>Black line is current years data. Based on data availability, red line is historical average (excluding pandemic year).

<sup>4</sup>Data Source: Medical claims data from athenaHealth® (www.athenahealth.com). Rate of Flu or ILI visits to Franklin County, OH athenaHealth® network primary care practices/physicians. Claims data are subject to filing and processing time lags. Historical data are updated when they are received.

<sup>5</sup>Franklin County, OH residents only (based on zipcode). NOTE: Excludes one hospital system included in the past due to technical changes affecting visit classification assignment and numbers.

<sup>6</sup>Confirmed cases only. Based on jurisdiction equal to Franklin County or City of Columbus and admission date available in ODRS.

## **Influenza Morbidity and Influenza-Like Illness (ILI) Reports**

In week 12, the preliminary local influenza and influenza-like-illness (ILI) visit rate to athenaHealth® providers (8.0 per 1,000 visits) increased compared to the previous week and is above its baseline average for the week (Figure 1). The week 12 percentage of all Emergency Department (ED) visits categorized as ILI increased compared to the previous week (Figure 3) and is above its historic baseline for the week.

Nationally, during week 12 of 2017, 3.2% of patient visits reported through ILINet were due to influenza-like illness (ILI). The percentage is above the national baseline of 2.2% for week 12.

## **Laboratory Surveillance**

During week 12 of 2017, reporting Franklin County sentinel medical facility laboratories tested 2,508 specimens, with 738 (29.4%) positive (Figure 4). The total number of tests done by local reporting labs from week 35 of 2016 through week 12 of 2017 is 41,958 with 6,810 (16.2%) positives (4,954 type A, 1,849 type B, 7 type A and B, 0 type unknown).

Nationally in week 12 of 2017, clinical laboratories reported 23,666 specimens tested for influenza viruses, 4,768 (20.1%) of which were positive (2,253 type A, 2,515 type B). Public health laboratories reported testing 1,253 specimens, 602 of which were positive (320 type A – of which 10 were A(H1N1)pdm09, 291 were A/H3, and 19 were not subtyped; 282 type B – of which 146 were Yamagata lineage, 27 were Victoria lineage, and 109 where lineage was not performed). Please visit the CDC website for more information, including cumulative data since week 40.

In week 12 of 2017, participating Ohio clinical labs reported 47,238 specimens tested for influenza this season thus far. Positive results include: (5) A(H1N1)pdm09; (580) A/H3N2; (3,705) Flu A Not Subtyped, and (2,575) Flu B (through 3/25/17). ODH Public Health Lab reported 1,099 specimens tested for influenza from various submitters this season thus far. Positive results include: (5) A(H1N1)pdm09; (698) A/H3N2; (194) Influenza B (through 3/25/17). Please visit the ODH website for more information.

## **ED Respiratory Visits**

In the 12<sup>th</sup> week of 2017, the percentage of all ED visits categorized as respiratory was stable compared to the percentage seen the previous week and is above its historic baseline for the week (Figure 5).

## **Over-the-Counter (OTC) Medication Sales**

In week 12 of 2017, the trends for categories of local over-the-counter medication sales tracked were mixed (increase in cough and cold, thermometer, pediatric anti-fever, and throat lozenge sales; decrease in electrolyte, chest rub, and adult anti-fever sales) compared to last week.

## **Additional Influenza Activity Web Links:**

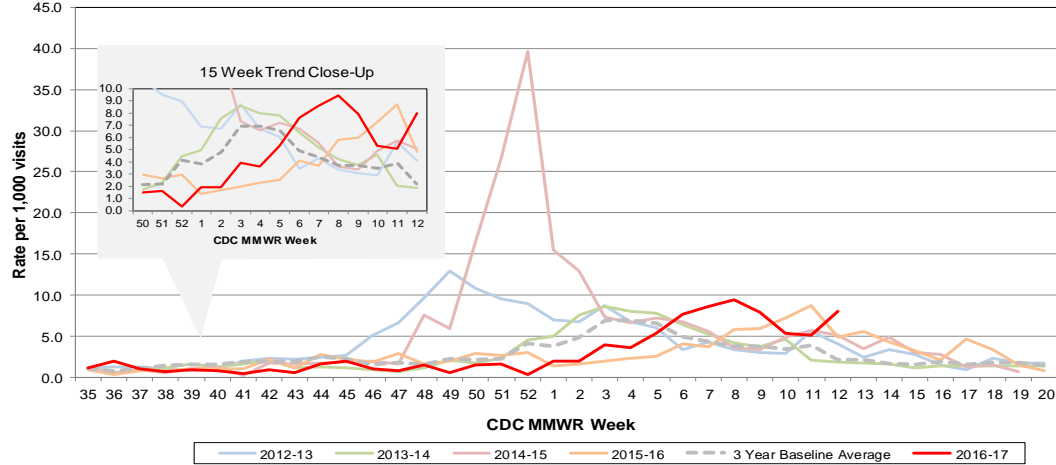
Ohio Seasonal Flu Surveillance: <https://www.odh.ohio.gov/en/features/odhfeatures/seasflu/Ohio-Flu-Activity>

CDC National Seasonal Flu Surveillance Reports: <http://www.cdc.gov/flu/weekly/>

World Health Organization Situation Updates: [http://www.who.int/influenza/surveillance\\_monitoring/en/](http://www.who.int/influenza/surveillance_monitoring/en/)

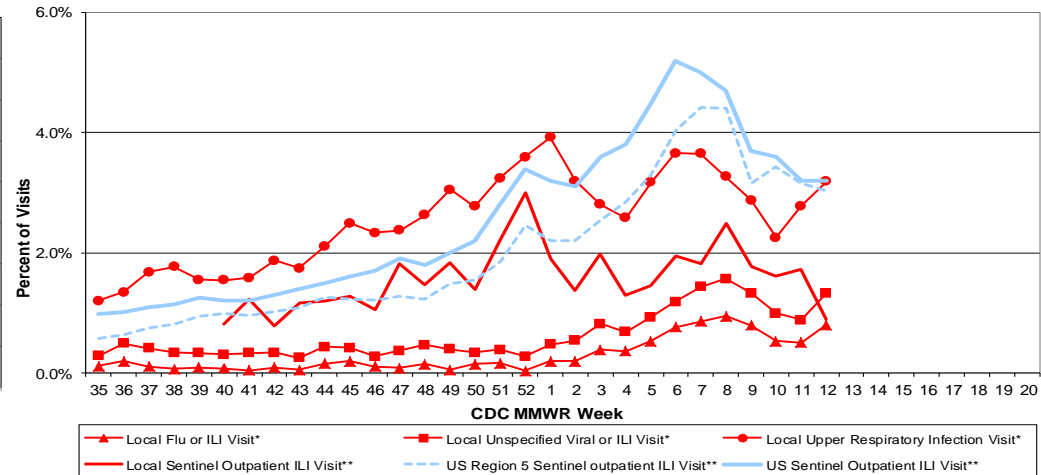
Columbus & Franklin County Influenza Monitoring Summary – Week 12, 2017 (3/19/2017-3/25/2017)

**Figure 1: Local Participating Outpatient Primary Care Provider Influenza or Influenza-Like Illness Visit Rate\*, Franklin County, OH**



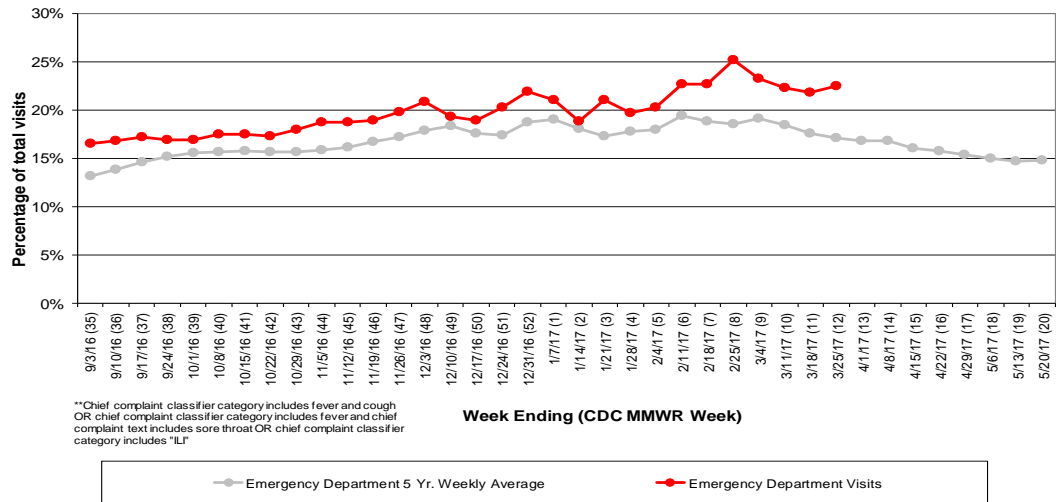
\*Source: Medical Claims data from athenaHealth®  
 Note: athenaHealth® claims data are subject to filing and processing time lags. Historical data are updated when they are received.

**Figure 2: Percentage of Local Outpatient Participating Provider\* and CDC National Outpatient Sentinel Health Care Provider\*\* Site visits for ILI and Associated Illnesses, 2016-17**



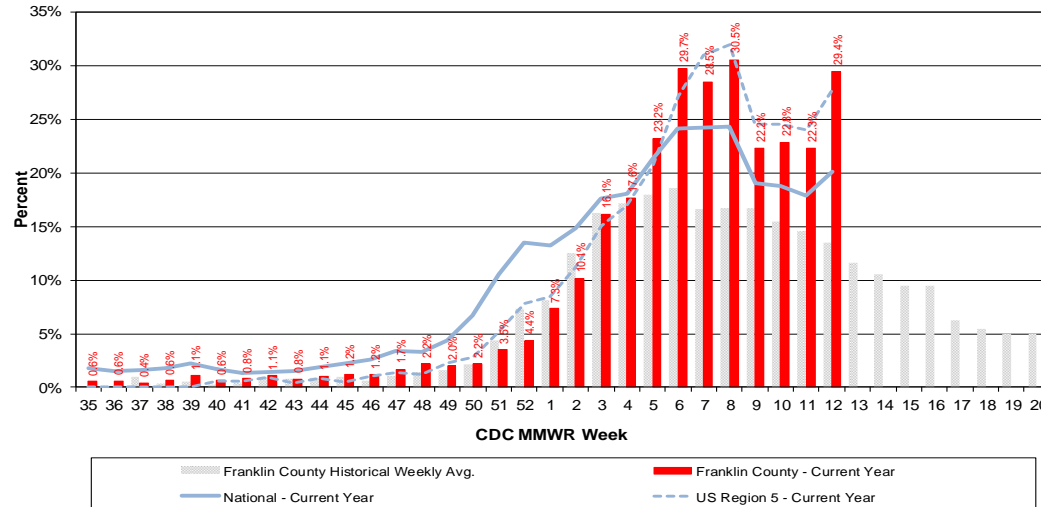
\*Source: Local medical claims data provided by athenaHealth®. Data are subject to filing and processing time lags. Historical data are updated when received.  
 \*\*Source: U.S. Outpatient Influenza-like Illness Surveillance Network (ILINet) sentinel provider visits

**Figure 3: Franklin County Resident ILI Defined\*\* ED Visits, 2016-17, Franklin County, OH**



\*\*Chief complaint classifier category includes fever and cough OR chief complaint classifier category includes fever and chief complaint text includes sore throat OR chief complaint classifier category includes "LI"

**Figure 4: Percentage of Local Reporting and National Laboratory Positive Influenza Tests by Week, 2016-17**



Columbus & Franklin County Influenza Monitoring Summary – Week 12, 2017 (3/19/2017-3/25/2017)

Figure 5: Franklin County Resident Respiratory ED Visits, 2016-17, Franklin County, OH

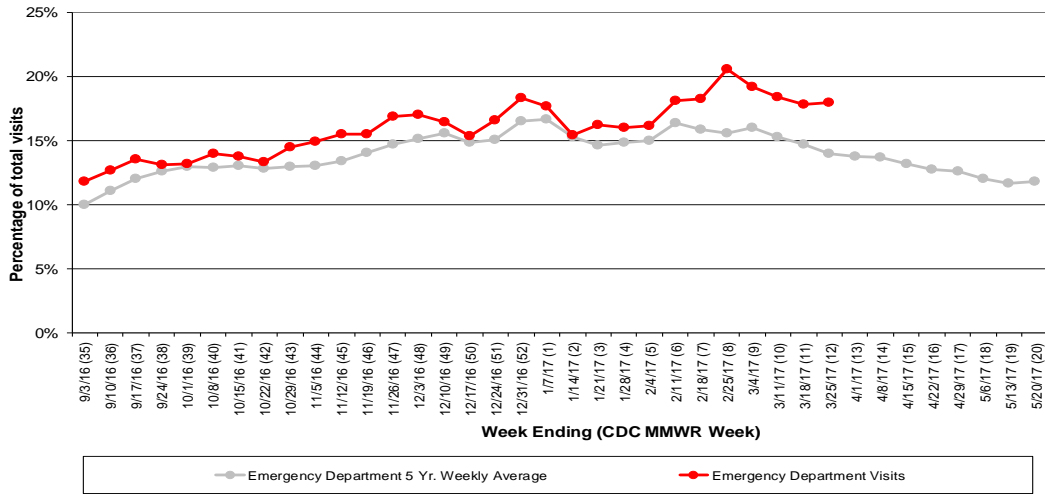


Figure 6: Selected Number of Over-the-Counter Medication Sales, 2016-17, Franklin County, OH

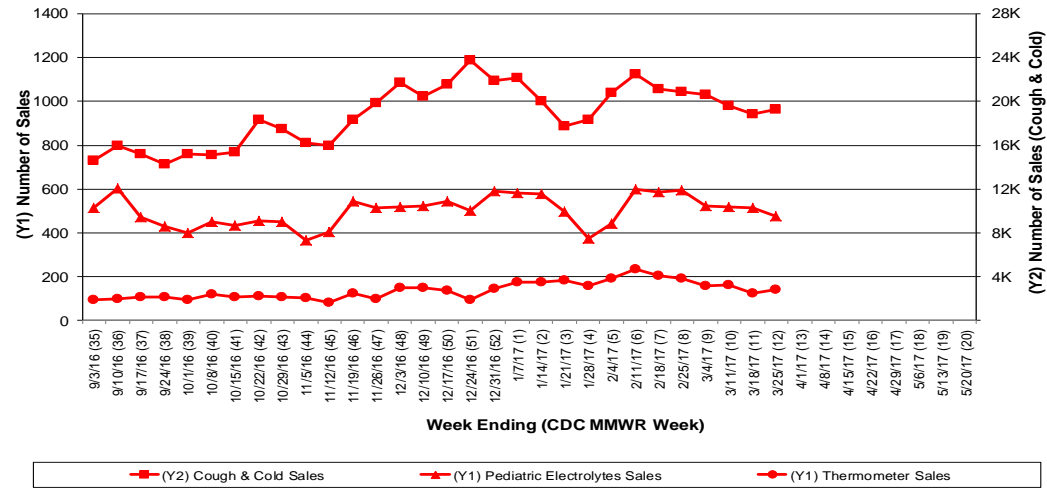
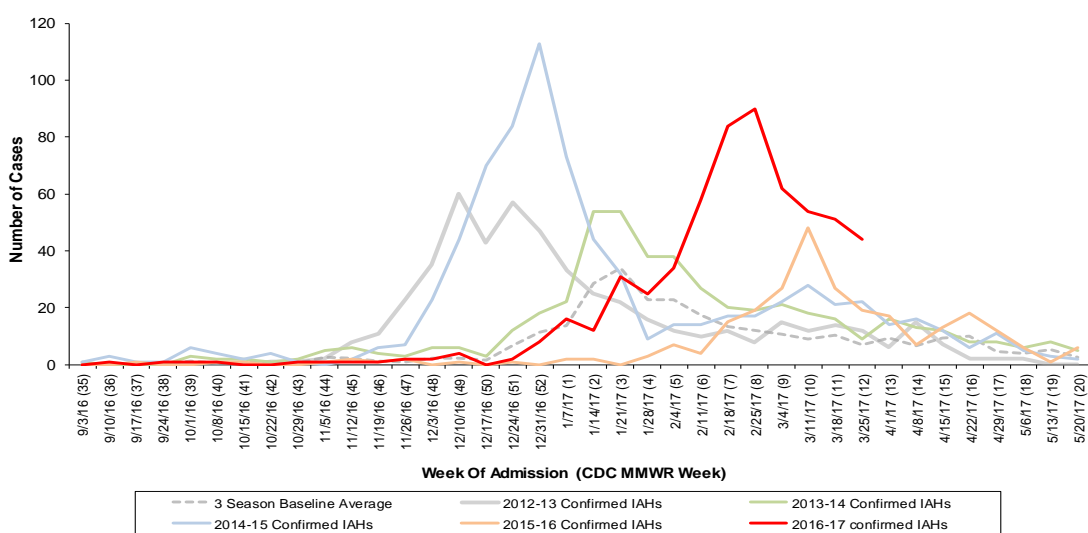


Figure 7: Franklin County Confirmed Influenza Associated Hospitalizations by Hospital Admission Week (As of 3/30/2017)



Franklin County, OH, Confirmed Influenza Hospitalization Cumulative Rates (per 100,000) by Age-Group and Admission Week, 2016-2017 Season

