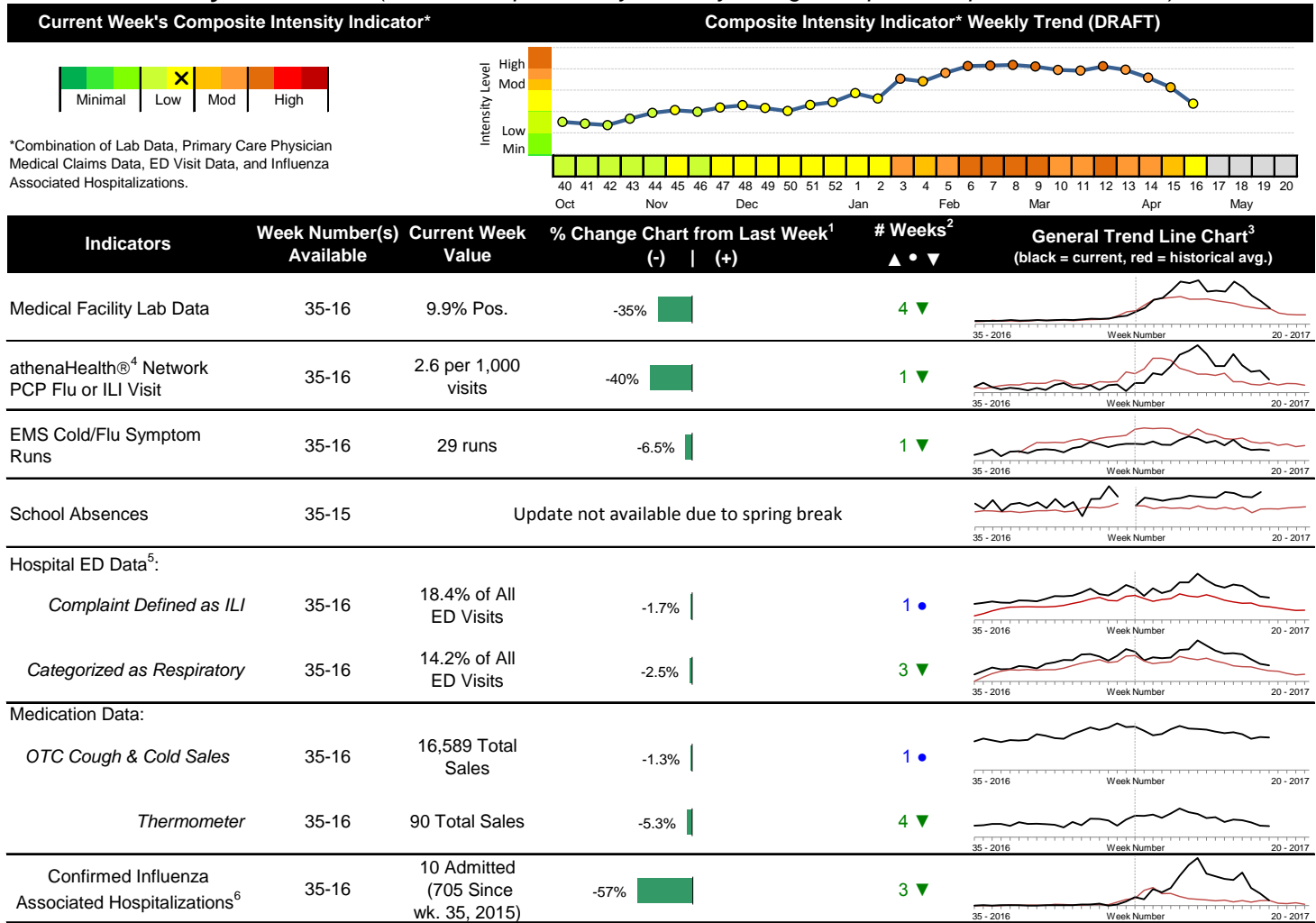


Highlights

- In week 16 of 2017, the majority of individual local flu activity indicator trends decreased and many are close to, or are approaching, their baseline averages. As a whole, flu intensity (composite indicator) decreased and was low.
- Geographic spread and local intensity designation (Click [here](#) for definitions) = WIDESPREAD, LOW
- Local medical facility labs reported 1,245 tests run with 123 (9.9%) positive results for week 16 of 2017. This is lower than last week's 15.1% and is close to the weekly baseline.
- The percentage of ED visits for influenza-like-illness (ILI) and respiratory symptoms both decreased compared to last week. The percentage of ED visits for both ILI and respiratory symptoms are above their respective baseline averages for the week.
- In week 16 of 2017, the trends for categories of local over-the-counter medication sales tracked were mixed (decrease in electrolyte and thermometer sales; increase in pediatric anti-fever and throat lozenge sales; stable cough and cold, chest rub, and adult anti-fever sales) compared to last week.
- In week 16, influenza activity decreased in the United States. Please [visit the CDC website for specific information](#) (National data is usually updated on Friday of each week).

Local Flu Activity Dashboard (All data are preliminary and may change as updated reports are received.)



Reportable Conditions (Cumulative Numbers as of Apr. 27, 2017)	2012	2013	2014	2015	2016	2017 YTD
Pediatric Influenza Associated Death Reported by Year (based on date of death)	0	0	0	0	0	0
Influenza Associated Hospitalizations (IAH) Reported by Admission Year ⁶	394	301	875	448	292	682
IAH comparison by Season (October - May or Weeks 35 - 20)	2011-12	2012-13	2013-14	2014-15	2015-16	2016-17
Current season (2016-17) is from week 35 through week 16.	95	512	486	872	264	705

¹Interpret with caution. Indicators with small numbers subject to large weekly percentage fluctuations.
²Number of weeks "▲" = Increase (>2%), "▼" = Decrease (>2%), "•" = Stable (-2% to +2%).
³Black line is current years data. Based on data availability, red line is historical average (excluding pandemic year).
⁴Data Source: Medical claims data from athenaHealth® (www.athenahealth.com). Rate of Flu or ILI visits to Franklin County, OH athenaHealth® network primary care practices/physicians. Claims data are subject to filing and processing time lags. Historical data are updated when they are received.
⁵Franklin County, OH residents only (based on zipcode). NOTE: Excludes one hospital system included in the past due to technical changes affecting visit classification assignment and numbers.
⁶Confirmed cases only. Based on jurisdiction equal to Franklin County or City of Columbus and admission date available in ODRS.

Influenza Morbidity and Influenza-Like Illness (ILI) Reports

In week 16, the preliminary local influenza and influenza-like-illness (ILI) visit rate to athenaHealth® providers (2.6 per 1,000 visits) decreased compared to the previous week and is close to its baseline average for the week (Figure 1). The week 16 percentage of all Emergency Department (ED) visits categorized as ILI decreased compared to the previous week (Figure 3) and is above its historic baseline for the week.

Nationally, during week 16 of 2017, 1.8% of patient visits reported through ILINet were due to influenza-like illness (ILI). The percentage is below the national baseline of 2.2% for week 16.

Laboratory Surveillance

During week 16 of 2017, reporting Franklin County sentinel medical facility laboratories tested 1,245 specimens, with 123 (9.9%) positive (Figure 4). The total number of tests done by local reporting labs from week 35 of 2016 through week 16 of 2017 is 49,344 with 8,223 (16.7%) positives (5,477 type A, 2,736 type B, 8 type A and B, 2 type unknown).

Nationally in week 16 of 2017, clinical laboratories reported 14,889 specimens tested for influenza viruses, 1,426 (9.6%) of which were positive (366 type A, 1,060 type B). Public health laboratories reported testing 597 specimens, 215 of which were positive (66 type A – of which 2 were A(H1N1)pdm09, 58 were A/H3, and 6 were not subtyped; 149 type B – of which 84 were Yamagata lineage, 21 were Victoria lineage, and 44 where lineage was not performed). Please visit the CDC website for more information, including cumulative data since week 40.

In week 16 of 2017, participating Ohio clinical labs reported 56,226 specimens tested for influenza this season thus far. Positive results include: (5) A(H1N1)pdm09; (646) A/H3N2; (4,172) Flu A Not Subtyped, and (3,625) Flu B (through 4/22/17). ODH Public Health Lab reported 1,233 specimens tested for influenza from various submitters this season thus far. Positive results include: (5) A(H1N1)pdm09; (751) A/H3N2; (252) Influenza B (through 4/22/17). Please visit the ODH website for more information.

ED Respiratory Visits

In the 16th week of 2017, the percentage of all ED visits categorized as respiratory decreased compared to the percentage seen the previous week and is above its historic baseline for the week (Figure 5).

Over-the-Counter (OTC) Medication Sales

In week 16 of 2017, the trends for categories of local over-the-counter medication sales tracked were mixed (decrease in electrolyte and thermometer sales; increase in pediatric anti-fever and throat lozenge sales; stable cough and cold, chest rub, and adult anti-fever sales) compared to last week.

Additional Influenza Activity Web Links:

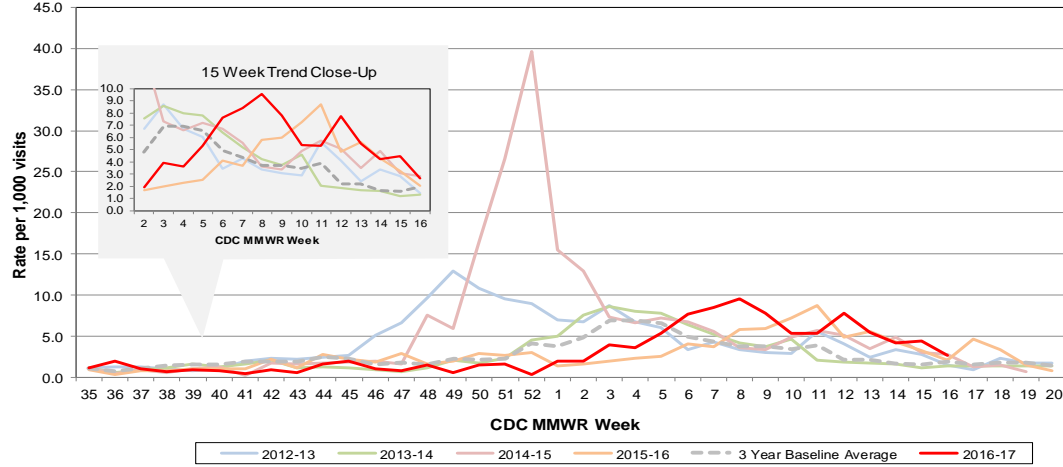
Ohio Seasonal Flu Surveillance: <https://www.odh.ohio.gov/en/features/odhfeatures/seasflu/Ohio-Flu-Activity>

CDC National Seasonal Flu Surveillance Reports: <http://www.cdc.gov/flu/weekly/>

World Health Organization Situation Updates: http://www.who.int/influenza/surveillance_monitoring/en/

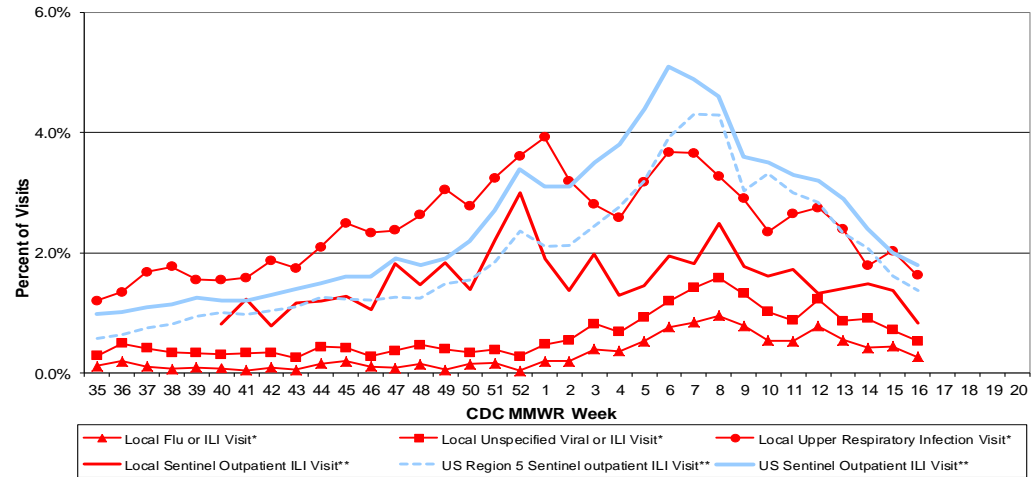
Columbus & Franklin County Influenza Monitoring Summary – Week 15, 2017 (4/9/2017-4/15/2017)

Figure 1: Local Participating Outpatient Primary Care Provider Influenza or Influenza-Like Illness Visit Rate[†], Franklin County, OH



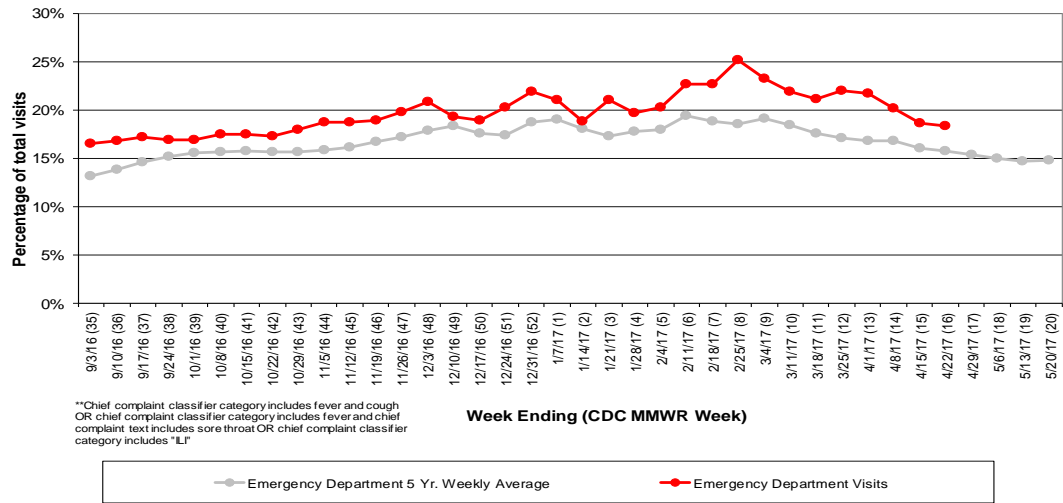
[†]Source: Medical Claims data from athenaHealth®
 Note: athenaHealth® claims data are subject to filing and processing time lags. Historical data are updated when they are received.

Figure 2: Percentage of Local Outpatient Participating Provider* and CDC National Outpatient Sentinel Health Care Provider Site visits for ILI and Associated Illnesses, 2016-17**



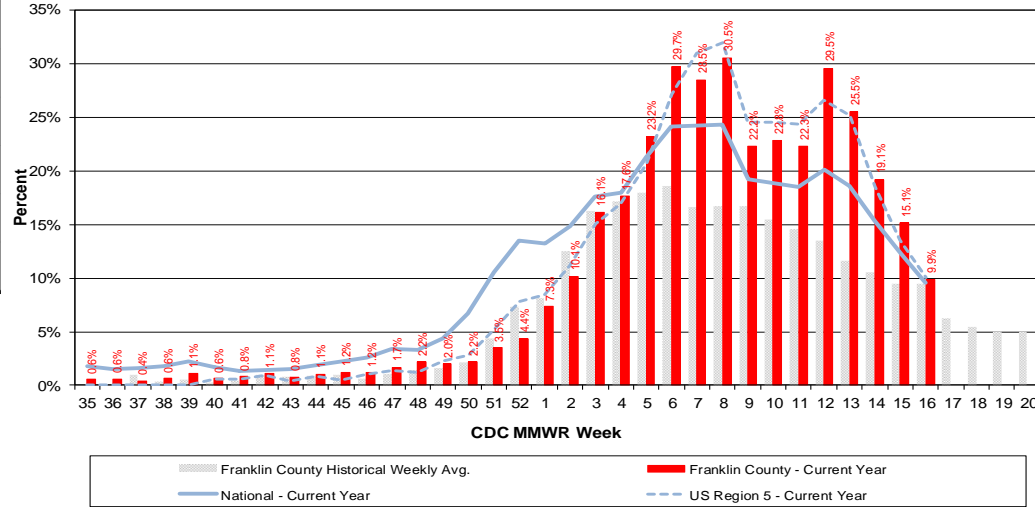
*Source: Local medical claims data provided by athenaHealth®. Data are subject to filing and processing time lags. Historical data are updated when received.
 **Source: U.S. Outpatient Influenza-like Illness Surveillance Network (ILINet) sentinel provider visits

Figure 3: Franklin County Resident ILI Defined ED Visits, 2016-17, Franklin County, OH**



**Chief complaint classifier category includes fever and cough
 OR chief complaint classifier category includes fever and chief complaint text includes sore throat OR chief complaint classifier category includes "L"

Figure 4: Percentage of Local Reporting and National Laboratory Positive Influenza Tests by Week, 2016-17



Columbus & Franklin County Influenza Monitoring Summary – Week 15, 2017 (4/9/2017-4/15/2017)

Figure 5: Franklin County Resident Respiratory ED Visits, 2016-17, Franklin County, OH

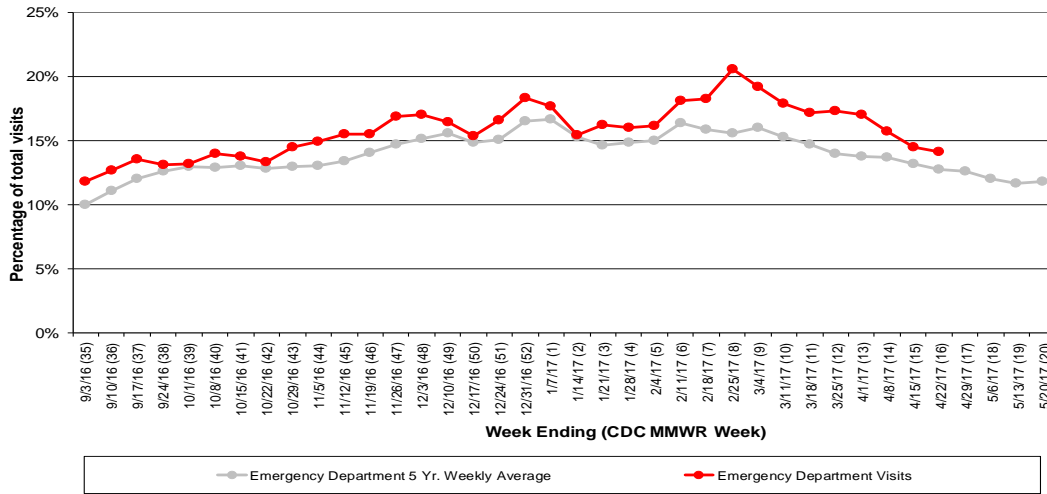


Figure 6: Selected Number of Over-the-Counter Medication Sales, 2016-17, Franklin County, OH

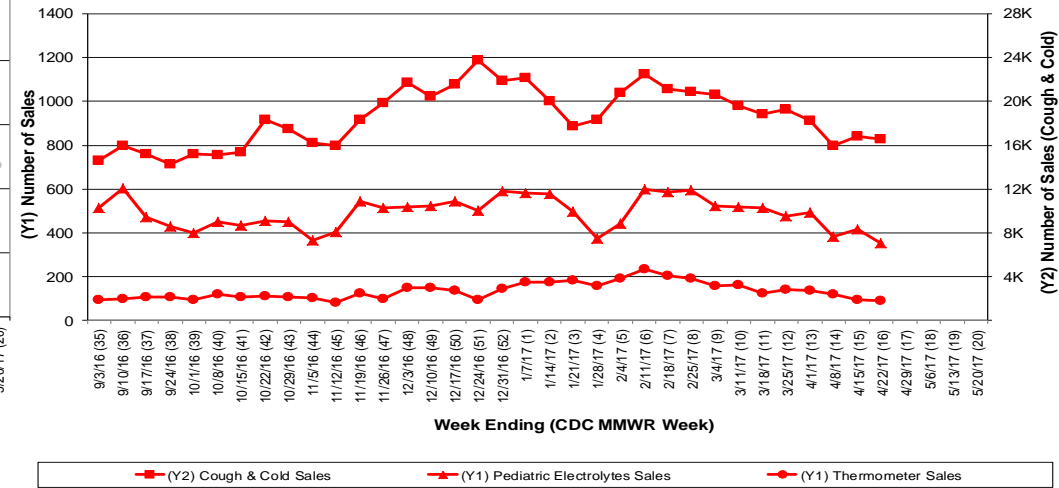
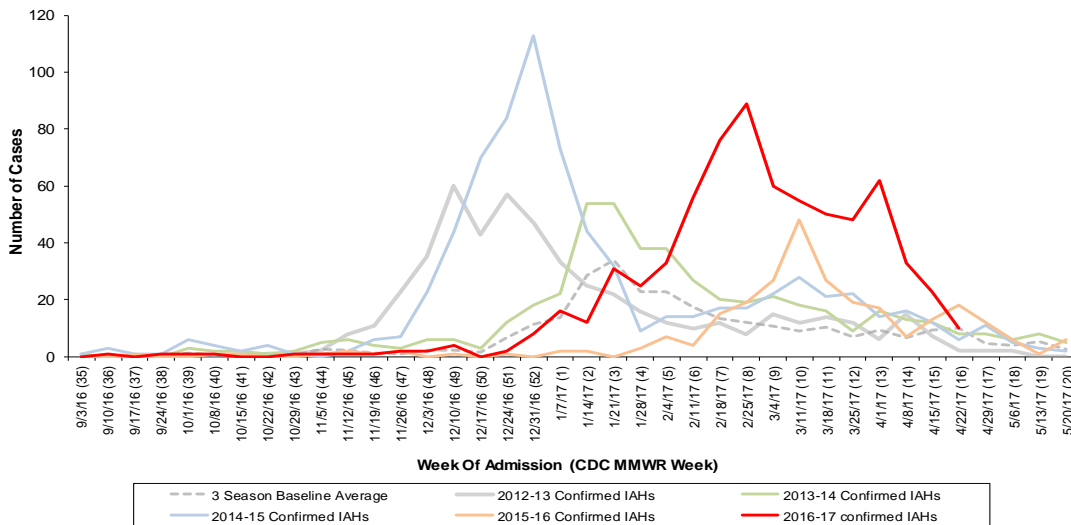


Figure 7: Franklin County Confirmed Influenza Associated Hospitalizations by Hospital Admission Week (As of 4/27/2017)



Franklin County, OH, Confirmed Influenza Hospitalization Cumulative Rates (per 100,000) by Age-Group and Admission Week, 2016-2017 Season

