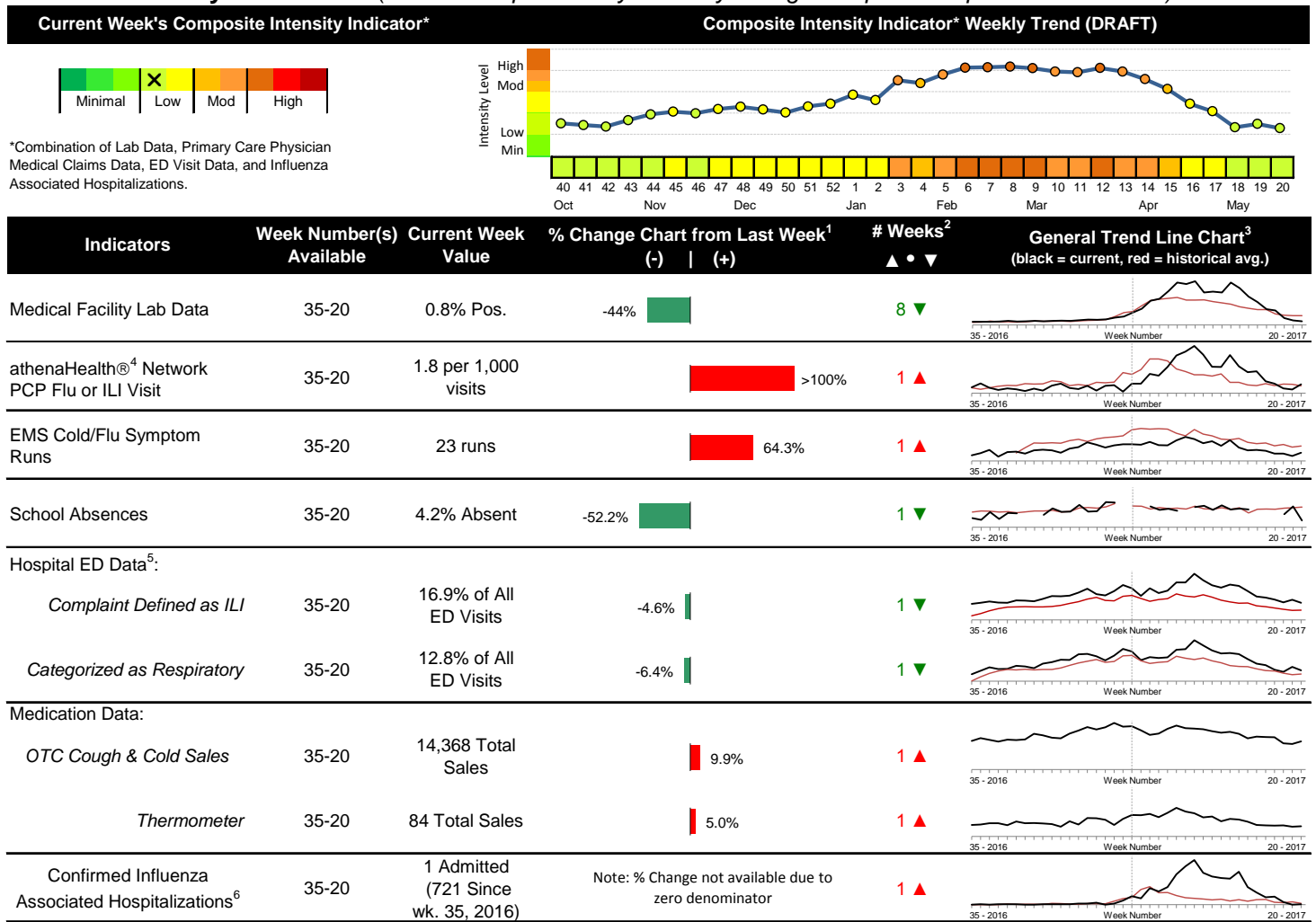


2016-2017 Columbus & Franklin County Seasonal Influenza Activity Weekly Summary (Week 20, May. 14th, 2017– May 20th, 2017)

Highlights

- This is the final weekly flu summary for the 2016-17 season. In week 20 of 2017, the individual flu activity indicator trends were mixed compared to last week. As a whole, flu intensity (composite indicator) continued to be low.
- Geographic spread and local intensity designation (Click [here](#) for definitions) = SPORADIC, LOW
- Local medical facility labs reported 648 tests run with 5 (0.8%) positive results for week 20 of 2017. This is lower than last week's 1.4% and is below the weekly baseline.
- The percentage of ED visits for influenza-like-illness (ILI) and respiratory symptoms both decreased slightly compared to last week. The percentage of ED visits for both ILI and respiratory symptoms are above their respective baseline averages for the week.
- In week 20 of 2017, the majority of trends for categories of local over-the-counter medication sales tracked increased (increase in cough and cold, thermometer, chest rub, pediatric anti-fever, and adult anti-fever sales; decrease in electrolyte sales; stable throat lozenge sales) compared to last week.
- In week 20, influenza activity decreased in the United States. Please [visit the CDC website for specific information](#) (National data is usually updated on Friday of each week).

Local Flu Activity Dashboard *(All data are preliminary and may change as updated reports are received.)*



Reportable Conditions (Cumulative Numbers as of May 25, 2017)	2012	2013	2014	2015	2016	2017 YTD
Pediatric Influenza Associated Death Reported by Year (based on date of death)	0	0	0	0	0	0
Influenza Associated Hospitalizations (IAH) Reported by Admission Year ⁶	394	301	875	448	292	695
<i>IAH comparison by Season (October - May or Weeks 35 - 20)</i>	<u>2011-12</u>	<u>2012-13</u>	<u>2013-14</u>	<u>2014-15</u>	<u>2015-16</u>	<u>2016-17</u>
<i>Current season (2016-17) is from week 35 through week 20.</i>	95	512	486	872	264	721

¹Interpret with caution. Indicators with small numbers subject to large weekly percentage fluctuations.
²Number of weeks "▲" = Increase (>2%), "▼" = Decrease (>2%), "●" = Stable (-2% to +2%).
³Black line is current years data. Based on data availability, red line is historical average (excluding pandemic year).
⁴Data Source: Medical claims data from athenaHealth® (www.athenahealth.com). Rate of Flu or ILI visits to Franklin County, OH athenaHealth® network primary care practices/physicians. Claims data are subject to filing and processing time lags. Historical data are updated when they are received.
⁵Franklin County, OH residents only (based on zipcode). NOTE: Excludes one hospital system included in the past due to technical changes affecting visit classification assignment and numbers.
⁶Confirmed cases only. Based on jurisdiction equal to Franklin County or City of Columbus and admission date available in ODRS.

Influenza Morbidity and Influenza-Like Illness (ILI) Reports

In week 20, the preliminary local influenza and influenza-like-illness (ILI) visit rate to athenaHealth® providers (1.8 per 1,000 visits) increased compared to the previous week and is close to its baseline average for the week (Figure 1). The week 20 percentage of all Emergency Department (ED) visits categorized as ILI decreased slightly compared to the previous week (Figure 3) and is above its historic baseline for the week.

Nationally, during week 20 of 2017, 1.3% of patient visits reported through ILINet were due to influenza-like illness (ILI). The percentage is below the national baseline of 2.2% for week 20.

Laboratory Surveillance

During week 20 of 2017, reporting Franklin County sentinel medical facility laboratories tested 648 specimens, with 5 (0.8%) positive (Figure 4). The total number of tests done by local reporting labs from week 35 of 2016 through week 20 of 2017 is 52,501 with 8,351 (15.9%) positives (5,496 type A, 2,844 type B, 9 type A and B, 2 type unknown).

Nationally in week 20 of 2017, clinical laboratories reported 8,566 specimens tested for influenza viruses, 369 (4.3%) of which were positive (99 type A, 270 type B). Public health laboratories reported testing 330 specimens, 84 of which were positive (27 type A – of which 2 were A(H1N1)pdm09, 24 were A/H3, and 1 was not subtyped; 57 type B – of which 33 were Yamagata lineage, 3 were Victoria lineage, and 21 where lineage was not performed). Please visit the CDC website for more information, including cumulative data since week 40.

In week 20 of 2017, participating Ohio clinical labs reported 60,461 specimens tested for influenza this season thus far. Positive results include: (5) A(H1N1)pdm09; (653) A/H3N2; (4,201) Flu A Not Subtyped, and (3,731) Flu B (through 5/20/17). ODH Public Health Lab reported 1,264 specimens tested for influenza from various submitters this season thus far. Positive results include: (6) A(H1N1)pdm09; (760) A/H3N2; (260) Influenza B (through 5/20/17). Please visit the ODH website for more information.

ED Respiratory Visits

In the 20th week of 2017, the percentage of all ED visits categorized as respiratory decreased slightly compared to the percentage seen the previous week and is above its historic baseline for the week (Figure 5).

Over-the-Counter (OTC) Medication Sales

In week 20 of 2017, the majority of trends for categories of local over-the-counter medication sales tracked increased (increase in cough and cold, thermometer, chest rub, pediatric anti-fever, and adult anti-fever sales; decrease in electrolyte sales; stable throat lozenge sales) compared to last week.

Additional Influenza Activity Web Links:

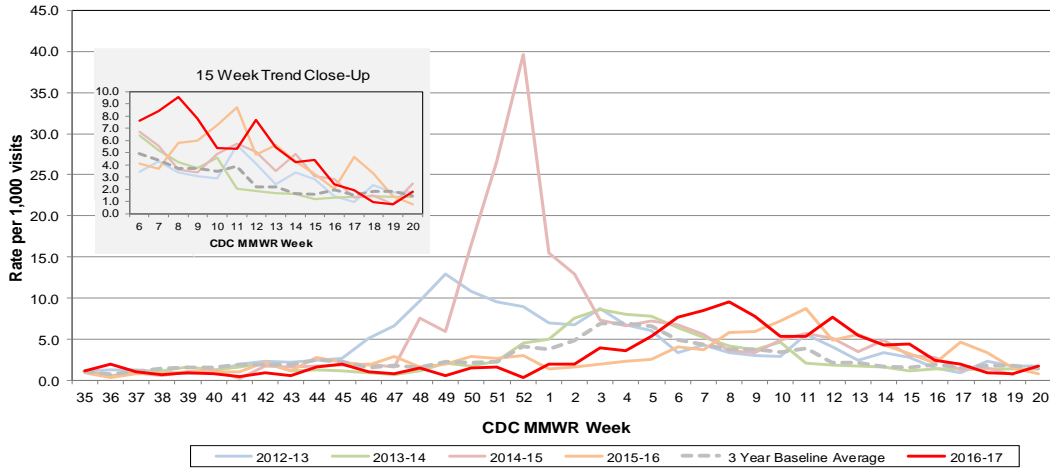
Ohio Seasonal Flu Surveillance: <https://www.odh.ohio.gov/en/features/odhfeatures/seasflu/Ohio-Flu-Activity>

CDC National Seasonal Flu Surveillance Reports: <http://www.cdc.gov/flu/weekly/>

World Health Organization Situation Updates: http://www.who.int/influenza/surveillance_monitoring/en/

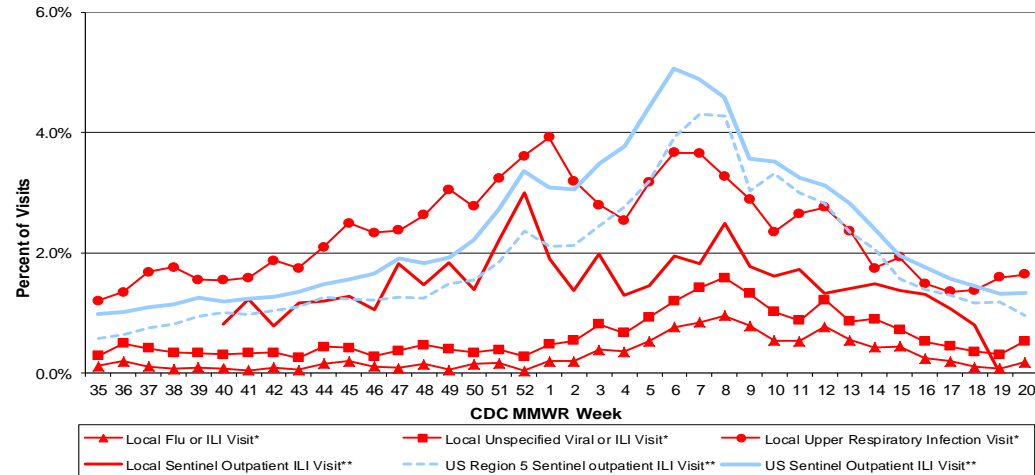
Columbus & Franklin County Influenza Monitoring Summary – Week 20, 2017 (5/14/2017-5/20/2017)

Figure 1: Local Participating Outpatient Primary Care Provider Influenza or Influenza-Like Illness Visit Rate*, Franklin County, OH



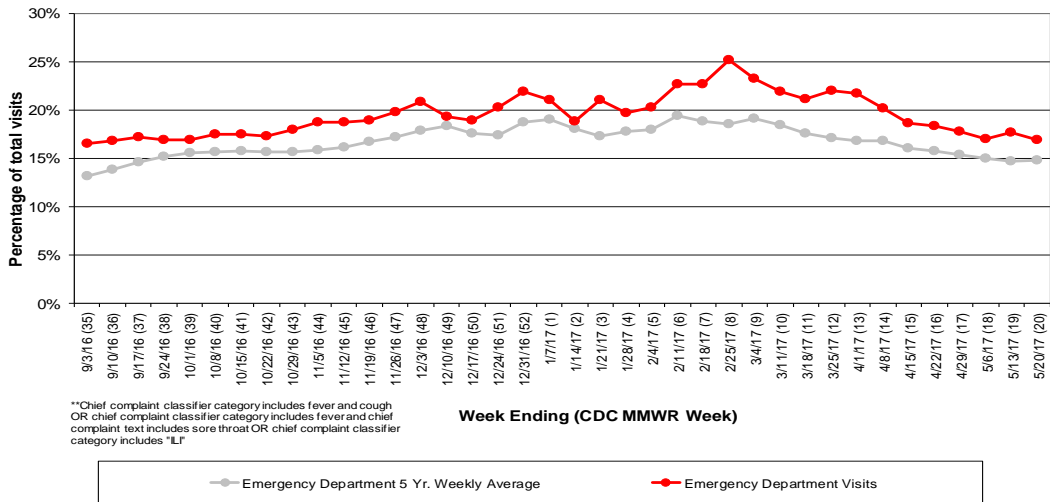
*Source: Medical Claims data from athenaHealth®
 Note: athenaHealth® claims data are subject to filing and processing time lags. Historical data are updated when they are received.

Figure 2: Percentage of Local Outpatient Participating Provider* and CDC National Outpatient Sentinel Health Care Provider Site visits for ILI and Associated Illnesses, 2016-17**



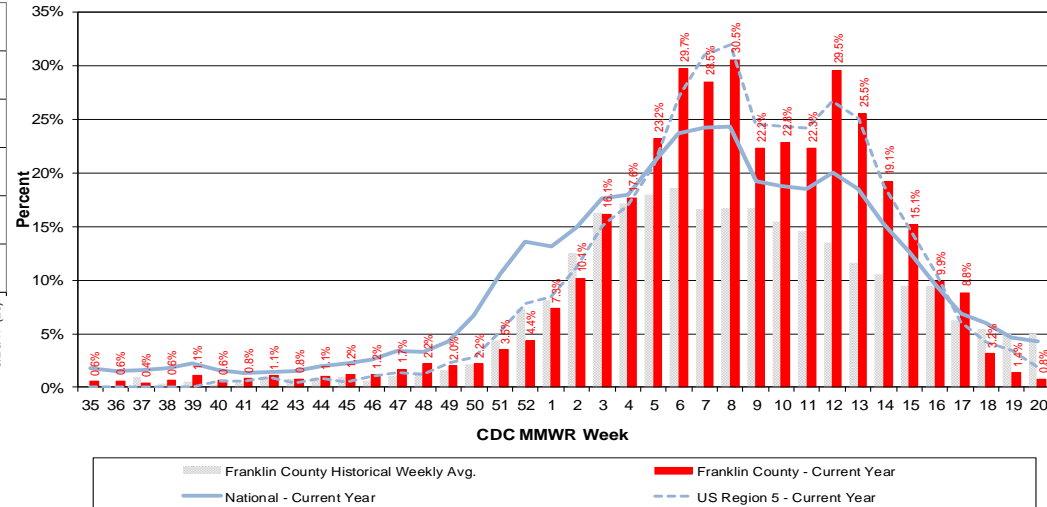
*Source: Local medical claims data provided by athenaHealth®. Data are subject to filing and processing time lags. Historical data are updated when received.
 **Source: U.S. Outpatient Influenza-like Illness Surveillance Network (ILINet) sentinel provider visits

Figure 3: Franklin County Resident ILI Defined ED Visits, 2016-17, Franklin County, OH**



**Chief complaint classifier category includes fever and cough OR chief complaint classifier category includes fever and chief complaint text includes sore throat OR chief complaint classifier category includes "LF"

Figure 4: Percentage of Local Reporting and National Laboratory Positive Influenza Tests by Week, 2016-17



Columbus & Franklin County Influenza Monitoring Summary – Week 20, 2017 (5/14/2017-5/20/2017)

Figure 5: Franklin County Resident Respiratory ED Visits, 2016-17, Franklin County, OH

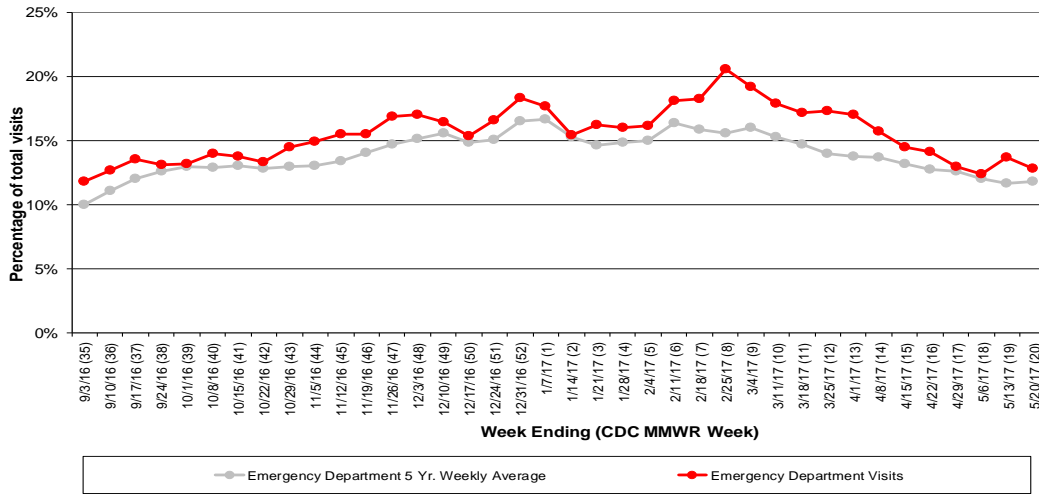


Figure 6: Selected Number of Over-the-Counter Medication Sales, 2016-17, Franklin County, OH

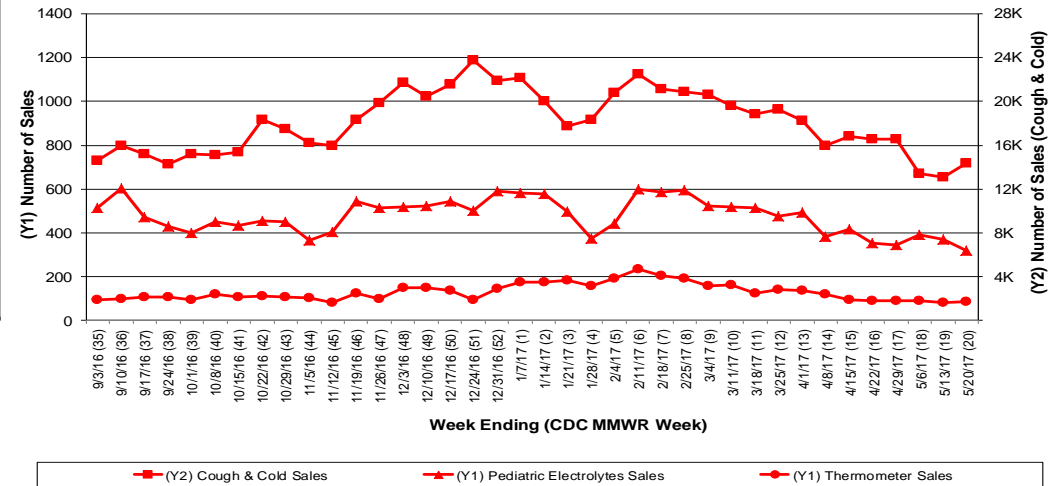
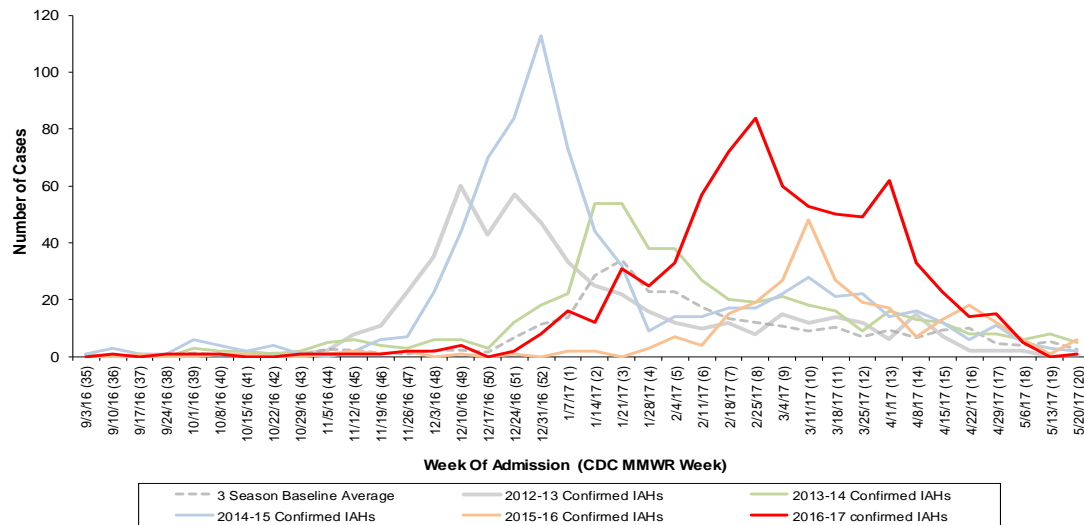


Figure 7: Franklin County Confirmed Influenza Associated Hospitalizations by Hospital Admission Week (As of 5/23/2017)



Franklin County, OH, Confirmed Influenza Hospitalization Cumulative Rates (per 100,000) by Age-Group and Admission Week, 2016-2017 Season

