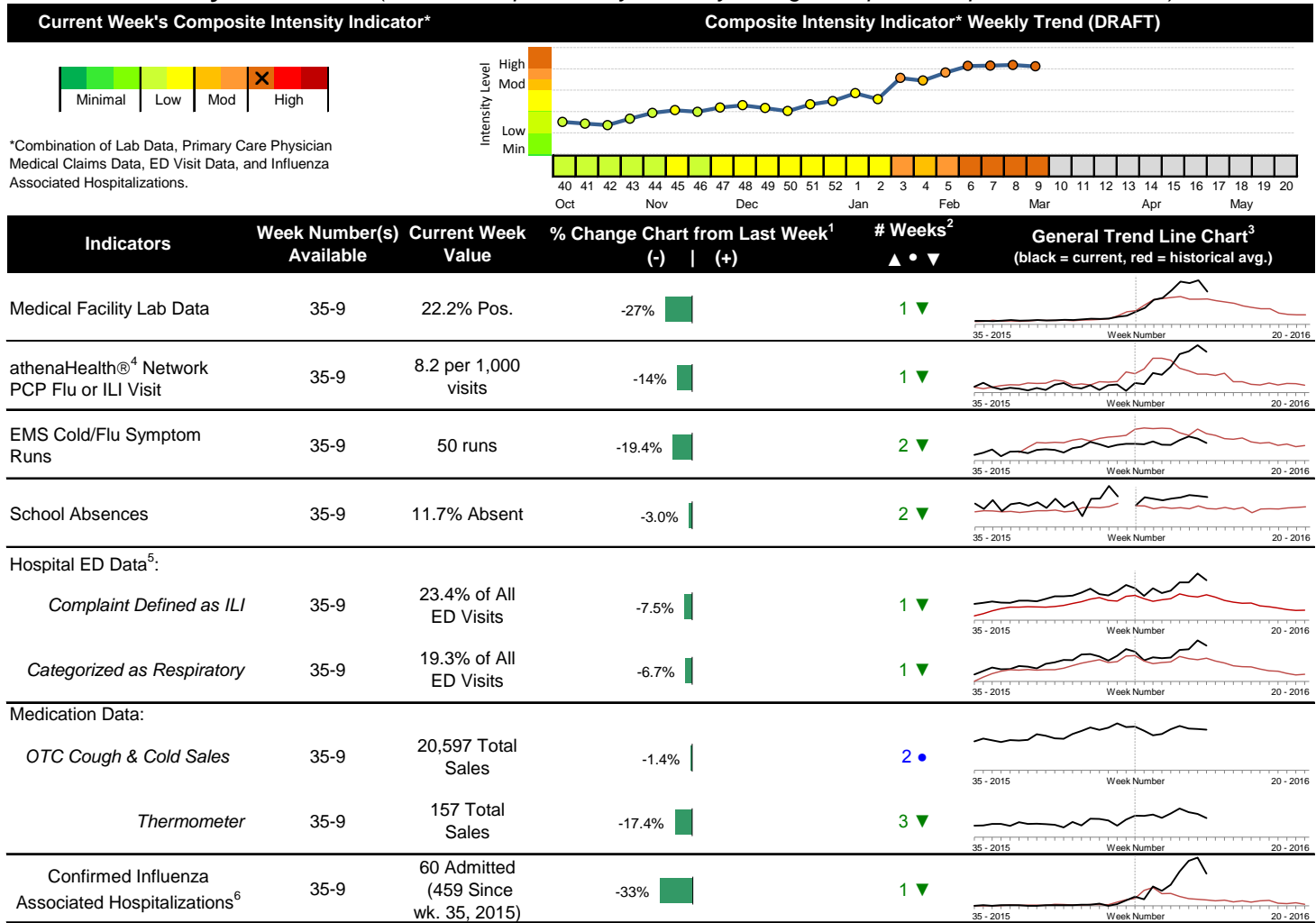


2016-2017 Columbus & Franklin County Seasonal Influenza Activity Weekly Summary (Week 9, Feb. 26th, 2017– Mar. 4th, 2017)

Highlights

- In week 9 of 2017, the individual local flu activity indicator trends decreased compared to last week, with the majority above their baseline averages. As a whole, flu intensity (composite indicator) decreased slightly but continued to be high.
- Geographic spread and local intensity designation (Click [here](#) for definitions) = WIDESPREAD, HIGH
- Local medical facility labs reported 2,805 tests run with 624 (22.2%) positive results for week 9 of 2017. This is lower than last week's 30.5% and is higher than the weekly baseline.
- The percentage of ED visits for both influenza-like-illness (ILI) and respiratory symptoms decreased compared to last week. The percentage of ED visits for both ILI and respiratory symptoms are above their respective baseline averages for the week.
- In week 9 of 2017, the trends for categories of local over-the-counter medication sales tracked were mixed (increase in pediatric anti-fever and adult anti-fever sales; decrease in electrolyte, thermometer, chest-rub, and throat lozenge sales; stable cough and cold sales) compared to last week.
- Nationally, influenza activity decreased, but remained elevated in the United States. Please [visit the CDC website for specific information](#) (National data is usually updated on Friday of each week).

Local Flu Activity Dashboard *(All data are preliminary and may change as updated reports are received.)*



Reportable Conditions (Cumulative Numbers as of Mar. 9, 2017)	2012	2013	2014	2015	2016	2017 YTD
Pediatric Influenza Associated Death Reported by Year (based on date of death)	0	0	0	0	0	0
Influenza Associated Hospitalizations (IAH) Reported by Admission Year ⁶	394	301	875	449	295	453
<i>IAH comparison by Season (October - May or Weeks 35 - 20)</i>	<u>2011-12</u>	<u>2012-13</u>	<u>2013-14</u>	<u>2014-15</u>	<u>2015-16</u>	<u>2016-17</u>
<i>Current season (2016-17) is from week 35 through week 9.</i>	95	512	486	873	264	459

¹Interpret with caution. Indicators with small numbers subject to large weekly percentage fluctuations.
²Number of weeks "▲" = Increase (>2%), "▼" = Decrease (>2%), "•" = Stable (-2% to +2%).
³Black line is current years data. Based on data availability, red line is historical average (excluding pandemic year).
⁴Data Source: Medical claims data from athenaHealth® (www.athenahealth.com). Rate of Flu or ILI visits to Franklin County, OH athenaHealth® network primary care practices/physicians. Claims data are subject to filing and processing time lags. Historical data are updated when they are received.
⁵Franklin County, OH residents only (based on zipcode). NOTE: Excludes one hospital system included in the past due to technical changes affecting visit classification assignment and numbers.
⁶Confirmed cases only. Based on jurisdiction equal to Franklin County or City of Columbus and admission date available in ODRS.

Influenza Morbidity and Influenza-Like Illness (ILI) Reports

In week 9, the preliminary local influenza and influenza-like-illness (ILI) visit rate to athenaHealth® providers (8.2 per 1,000 visits) decreased compared to the previous week and is above its baseline average for the week (Figure 1). The week 9 percentage of all Emergency Department (ED) visits categorized as ILI decreased compared to the previous week (Figure 3) and is above its historic baseline for the week.

Nationally, during week 9 of 2016, 3.6% of patient visits reported through ILINet were due to influenza-like illness (ILI). The percentage is above the national baseline of 2.2% for week 9.

Laboratory Surveillance

During week 9 of 2017, reporting Franklin County sentinel medical facility laboratories tested 2,805 specimens, with 624 (22.2%) positive (Figure 4). The total number of tests done by local reporting labs from week 35 of 2016 through week 9 of 2017 is 34,672 with 4,994 (14.4%) positives (3,881 type A, 1,108 type B, 5 type A and B, 0 type unknown).

Nationally in week 9 of 2017, clinical laboratories reported 28,166 specimens tested for influenza viruses, 5,245 (18.6%) of which were positive (3,599 type A, 1,646 type B). Public health laboratories reported testing 1,709 specimens, 837 of which were positive (625 type A – of which 16 were A(H1N1)pdm09, 586 were A/H3, and 23 were not subtyped; 212 type B – of which 79 were Yamagata lineage, 41 were Victoria lineage, and 92 where lineage was not performed). Please visit the CDC website for more information, including cumulative data since week 40.

In week 9 of 2017, participating Ohio clinical labs reported 39,747 specimens tested for influenza this season thus far. Positive results include: (5) A(H1N1)pdm09; (455) A/H3N2; (3,004) Flu A Not Subtyped, and (1,515) Flu B (through 3/4/17). ODH Public Health Lab reported 843 specimens tested for influenza from various submitters this season thus far. Positive results include: (4) A(H1N1)pdm09; (544) A/H3N2; (113) Influenza B (through 3/4/17). Please visit the ODH website for more information.

ED Respiratory Visits

In the 9th week of 2017, the percentage of all ED visits categorized as respiratory decreased compared to the percentage seen the previous week and is above its historic baseline for the week (Figure 5).

Over-the-Counter (OTC) Medication Sales

In week 9 of 2017, the trends for categories of local over-the-counter medication sales tracked were mixed (increase in pediatric anti-fever and adult anti-fever sales; decrease in electrolyte, thermometer, chest-rub, and throat lozenge sales; stable cough and cold sales) compared to last week.

Additional Influenza Activity Web Links:

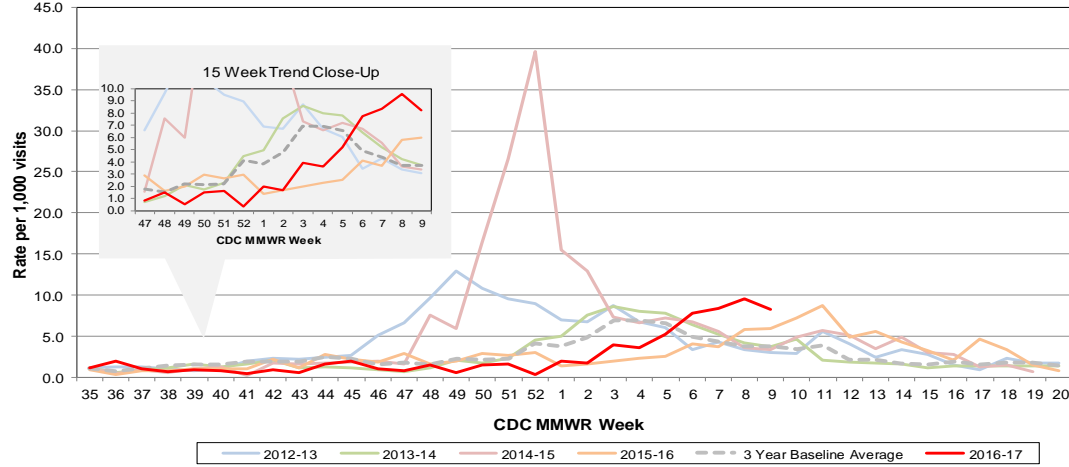
Ohio Seasonal Flu Surveillance: <https://www.odh.ohio.gov/en/features/odhfeatures/seasflu/Ohio-Flu-Activity>

CDC National Seasonal Flu Surveillance Reports: <http://www.cdc.gov/flu/weekly/>

World Health Organization Situation Updates: http://www.who.int/influenza/surveillance_monitoring/en/

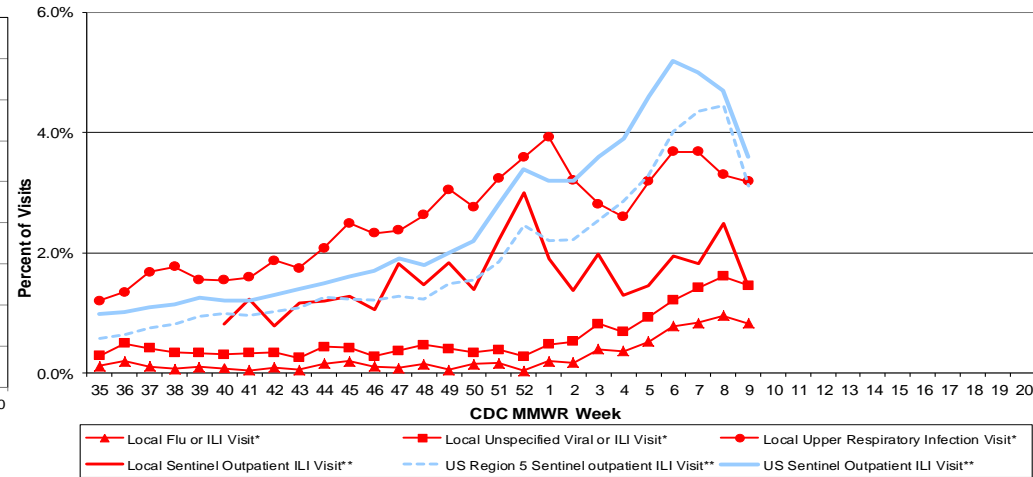
Columbus & Franklin County Influenza Monitoring Summary – Week 9, 2017 (2/26/2017-3/4/2017)

Figure 1: Local Participating Outpatient Primary Care Provider Influenza or Influenza-Like Illness Visit Rate*, Franklin County, OH



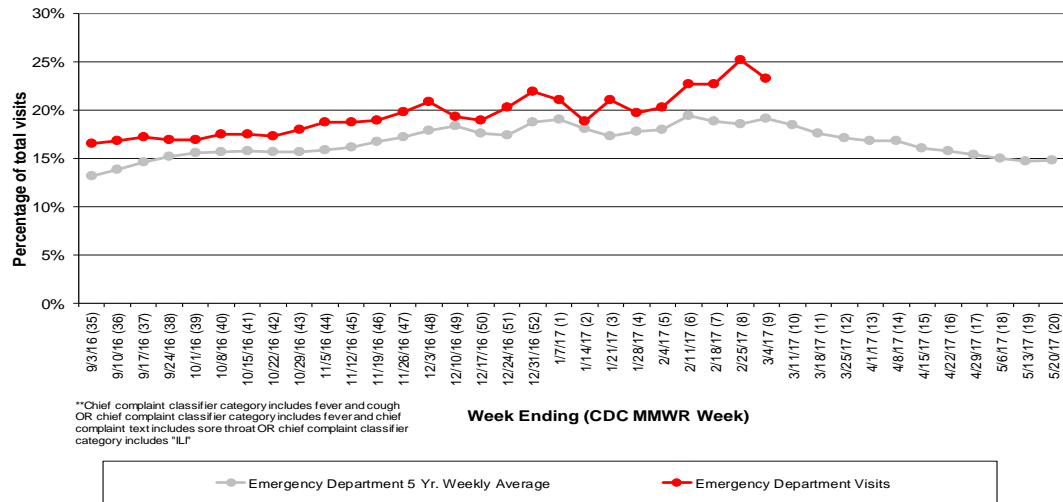
*Source: Medical Claims data from athenaHealth®
 Note: athenaHealth® claims data are subject to filing and processing time lags. Historical data are updated when they are received.

Figure 2: Percentage of Local Outpatient Participating Provider* and CDC National Outpatient Sentinel Health Care Provider Site visits for ILI and Associated Illnesses, 2016-17**



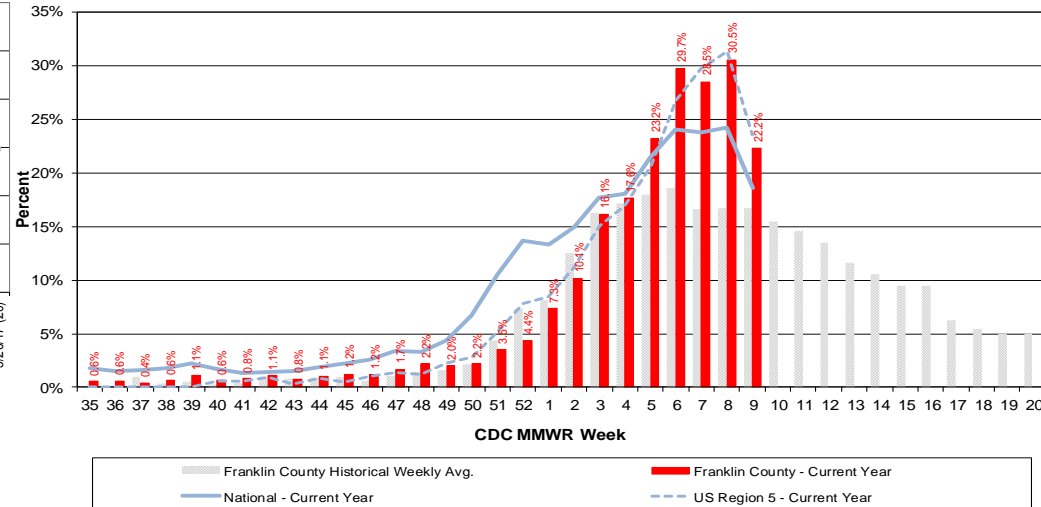
*Source: Local medical claims data provided by athenaHealth®. Data are subject to filing and processing time lags. Historical data are updated when received.
 **Source: U.S. Outpatient Influenza-like Illness Surveillance Network (ILINet) sentinel provider visits

Figure 3: Franklin County Resident ILI Defined ED Visits, 2016-17, Franklin County, OH**



**Chief complaint classifier category includes fever and cough
 OR chief complaint classifier category includes fever and chief complaint text includes sore throat OR chief complaint classifier category includes "ILI"

Figure 4: Percentage of Local Reporting and National Laboratory Positive Influenza Tests by Week, 2016-17



Columbus & Franklin County Influenza Monitoring Summary – Week 9, 2017 (2/26/2017-3/4/2017)

Figure 5: Franklin County Resident Respiratory ED Visits, 2016-17, Franklin County, OH

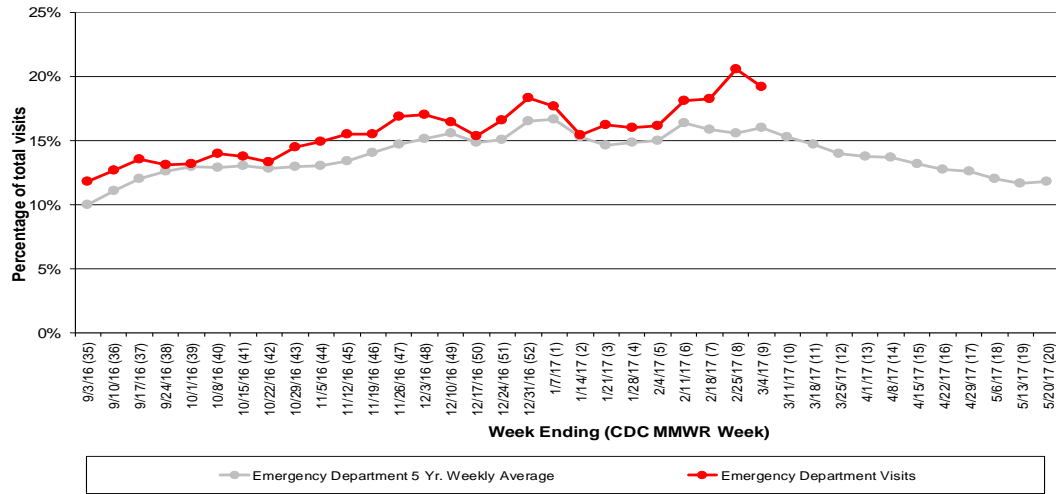


Figure 6: Selected Number of Over-the-Counter Medication Sales, 2016-17, Franklin County, OH

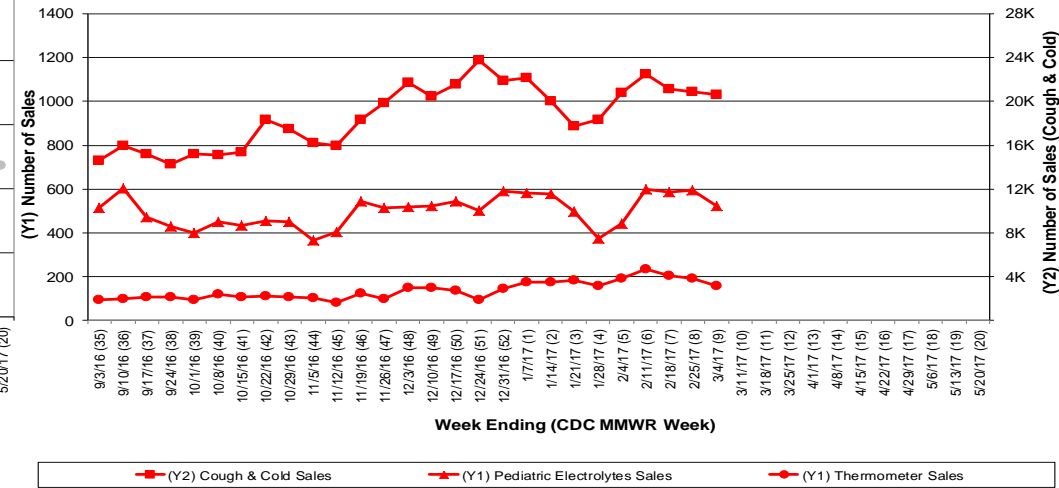
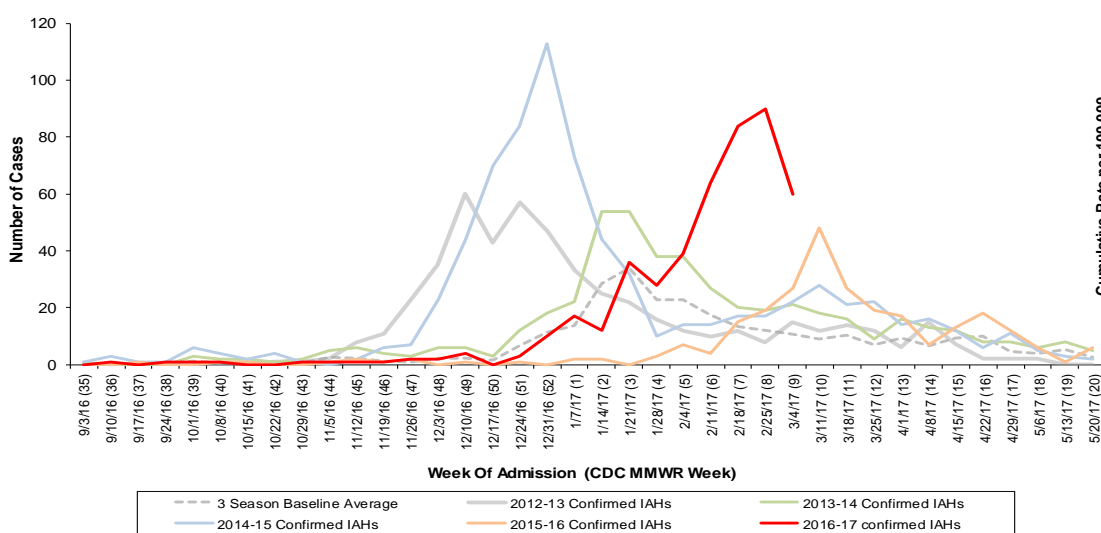


Figure 7: Franklin County Confirmed Influenza Associated Hospitalizations by Hospital Admission Week (As of 3/9/2017)



Franklin County, OH, Confirmed Influenza Hospitalization Cumulative Rates (per 100,000) by Age-Group and Admission Week, 2016-2017 Season

