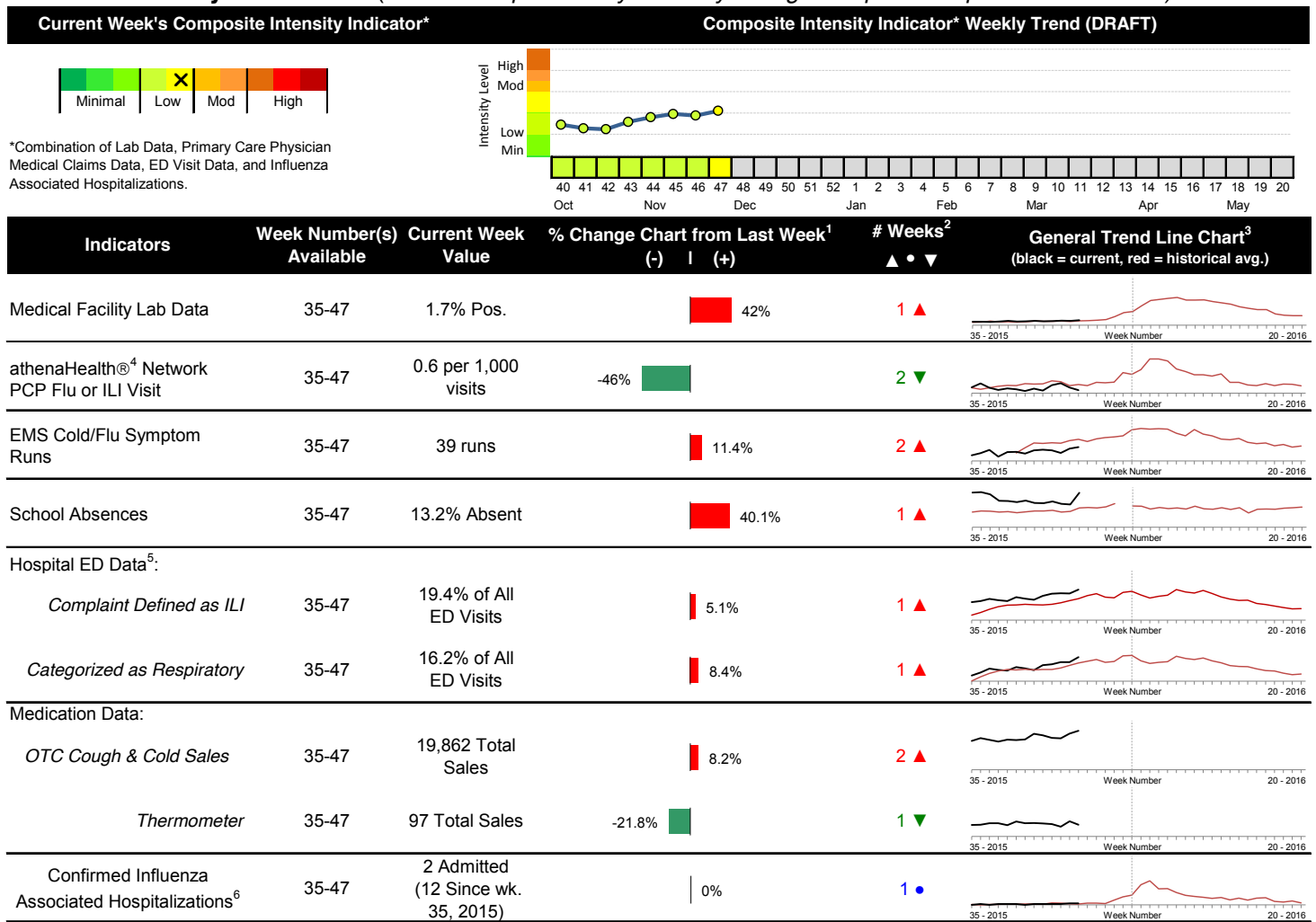


Highlights

- In week 47 of 2016, the majority of individual local flu activity indicator trends increased. As a whole, flu intensity was low and increased compared to last week.
- Geographic spread and local intensity designation (Click [here](#) for definitions) = SPORADIC, LOW
- Local medical facility labs reported 888 tests run with 15 (1.7%) positive results for week 47 of 2016. This is higher than last week's 1.2% and is higher than the weekly baseline.
- The percentage of ED visits for both influenza-like-illness (ILI) and respiratory symptoms increased compared to week 46. The percentage of ED visits for both ILI and respiratory symptoms are higher than their respective baseline averages for the week.
- In week 47 of 2016, the trend for categories of local over-the-counter medication sales tracked were mixed (decrease in electrolyte, thermometer, chest rub, and throat lozenge sales; increase in cough and cold and pediatric anti-fever sales; stable adult anti-fever sales) compared to last week.
- Nationally, influenza activity increased slightly, but remained low in the United States. Please [visit the CDC website for specific information](#) (National data is usually updated on Friday of each week).

Local Flu Activity Dashboard (All data are preliminary and may change as updated reports are received.)



Reportable Conditions (Cumulative Numbers as of Dec. 2, 2016)	2011	2012	2013	2014	2015	2016 YTD
Pediatric Influenza Associated Death Reported by Year (based on date of death)	0	0	0	0	0	0
Influenza Associated Hospitalizations (IAH) Reported by Admission Year ⁶	266	394	301	875	449	278
IAH comparison by Season (October - May or Weeks 35 - 20)	<u>2011-12</u>	<u>2012-13</u>	<u>2013-14</u>	<u>2014-15</u>	<u>2015-16</u>	<u>2016-17</u>
Current season (2016-17) is from week 35 through 47.	95	512	486	873	263	12

¹Interpret with caution. Indicators with small numbers subject to large weekly percentage fluctuations.
²Number of weeks "▲" = Increase (>2%), "▼" = Decrease (>2%), "●" = Stable (-2% to +2%).
³Black line is current years data. Based on data availability, red line is historical average (excluding pandemic year).
⁴Data Source: Medical claims data from athenaHealth® (www.athenahealth.com). Rate of Flu or ILI visits to Franklin County, OH athenaHealth® network primary care practices/physicians. Claims data are subject to filing and processing time lags. Historical data are updated when they are received.
⁵Franklin County, OH residents only (based on zipcode). NOTE: Excludes one hospital system included in the past due to technical changes affecting visit classification assignment and numbers.
⁶Confirmed cases only. Based on jurisdiction equal to Franklin County or City of Columbus and admission date available in ODRS.

Influenza Morbidity and Influenza-Like Illness (ILI) Reports

In week 47, the preliminary local influenza and influenza-like-illness (ILI) visit rate to athenaHealth® providers (0.6 per 1,000 visits) decreased compared to the previous week and is lower than its baseline average for the week (Figure 1). The week 47 percentage of all Emergency Department (ED) visits categorized as ILI increased compared to the previous week (Figure 3) and is higher than its historic baseline for the week.

Nationally, during week 47 of 2016, 1.8% of patient visits reported through ILINet were due to influenza-like illness (ILI). The percentage is below the national baseline of 2.2% for week 47.

Laboratory Surveillance

During week 47 of 2016, reporting Franklin County sentinel medical facility laboratories tested 888 specimens, with 15 (1.7%) positive (Figure 4). The total number of tests done by local reporting labs from week 35 of 2016 through week 47 of 2016 is 8,724 with 86 (1.0%) positives (32 type A, 53 type B, 1 type A and B, 0 type unknown).

Nationally in week 47 of 2016, clinical laboratories reported 14,787 specimens tested for influenza viruses, 525 (3.6%) of which were positive (372 type A, 153 type B). Public health laboratories reported testing 541 specimens, 62 of which were positive (54 type A – of which 2 were A(H1N1)pdm09, 31 were A/H3, and 21 were not subtyped; 8 type B – of which 1 were Yamagata lineage, 0 were Victoria lineage, and 7 where lineage was not performed). Please visit the CDC website for more information, including cumulative data since week 40.

In week 47 of 2016, participating Ohio clinical labs reported 7,210 specimens tested for influenza this season thus far. Positive results include: (0) A(H1N1)pdm09; (4) A/H3N2; (33) Flu A Not Subtyped, and (26) Flu B (through 11/26/16). ODH Public Health Lab reported 61 specimens tested for influenza from various submitters this season thus far. Positive results include: (0) A(H1N1)pdm09; (11) A/H3N2; (1) Influenza B (through 11/26/16). Please visit the ODH website for more information.

ED Respiratory Visits

In the 47th week of 2016, the percentage of all ED visits categorized as respiratory increased compared to the percentage seen the previous week and is higher than its historic baseline for the week (Figure 5).

Over-the-Counter (OTC) Medication Sales

In week 47 of 2016, the trend for categories of local over-the-counter medication sales tracked were mixed (decrease in electrolyte, thermometer, chest rub, and throat lozenge sales; increase in cough and cold and pediatric anti-fever sales; stable adult anti-fever sales) compared to last week.

Additional Influenza Activity Web Links:

Ohio Seasonal Flu Surveillance: <http://www.odh.ohio.gov/features/odhfeatures/seasflu/ohfluactivity.aspx>

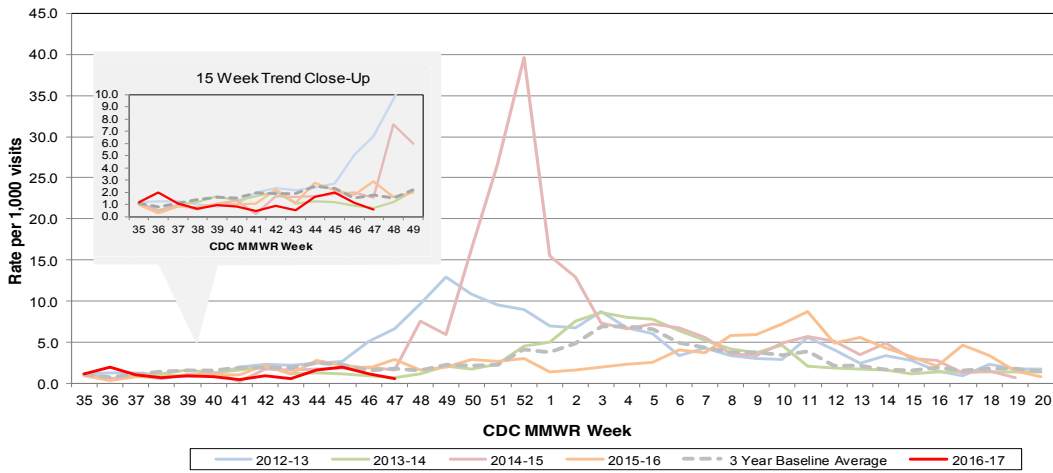
CDC National Seasonal Flu Surveillance Reports: <http://www.cdc.gov/flu/weekly/>

CDC International Flu Activity Map: <http://www.cdc.gov/flu/international/activity.htm>

World Health Organization Situation Updates: http://www.who.int/influenza/surveillance_monitoring/en/

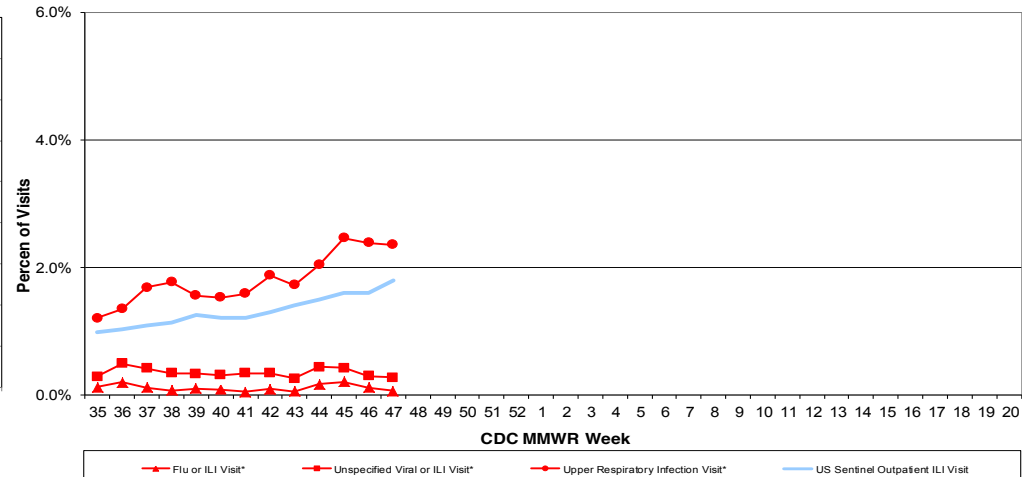
Columbus & Franklin County Influenza Monitoring Summary – Week 47, 2016 (11/20/2016-11/26/2016)

Figure 1: Local Participating Outpatient Primary Care Provider Influenza or Influenza-Like Illness Visit Rate*, Franklin County, OH



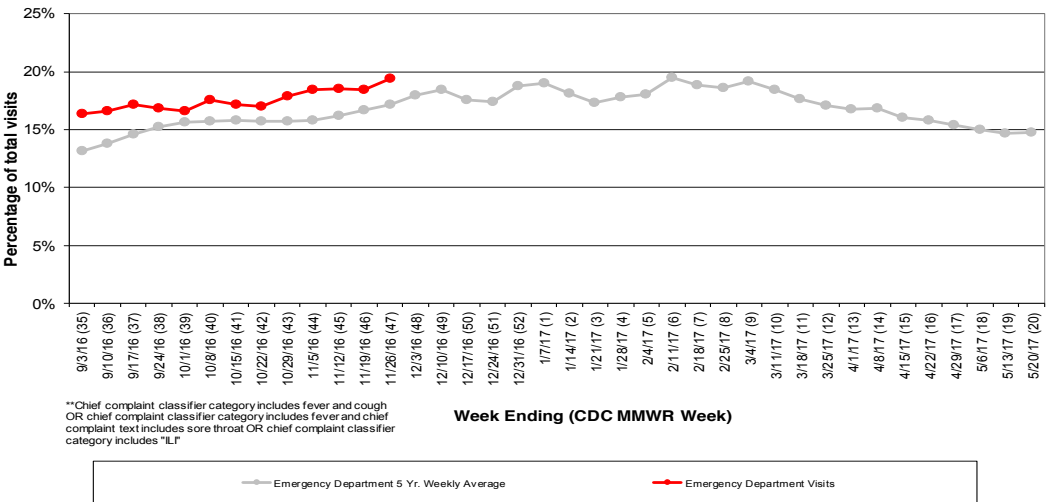
*Source: Medical Claims data from athenaHealth®
 Note: athenaHealth® claims data are subject to filing and processing time lags. Historical data are updated when they are received.

Figure 2: Percentage of Local Outpatient Participating Provider* and CDC National Outpatient Sentinel Health Care Provider Site visits for ILI and Associated Illnesses, 2016-17



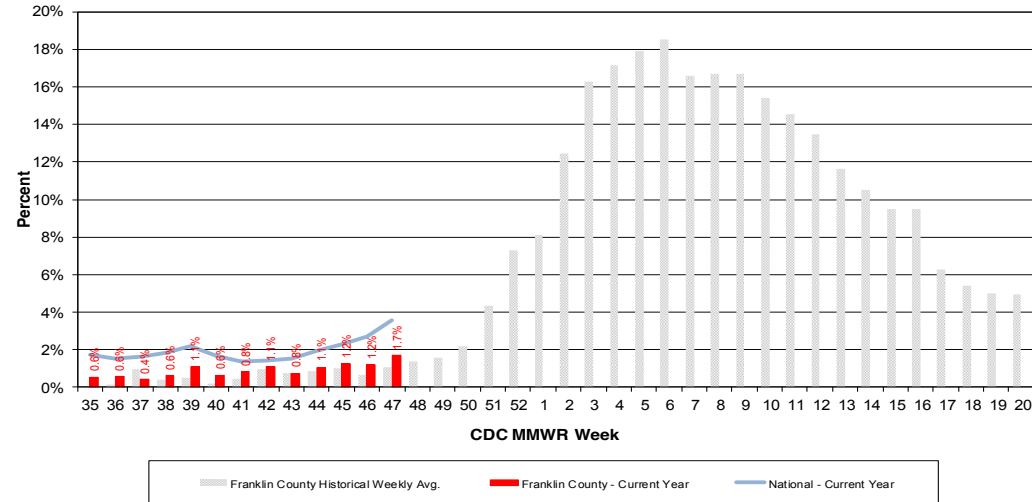
*Source: Local medical claims data provided by athenaHealth®
 Note: athenaHealth® claims data are subject to filing and processing time lags. Historical data are updated when they are received.

Figure 3: Franklin County Resident ILI Defined ED Visits, 2015-16, Franklin County, OH**



**Chief complaint classifier category includes fever and cough OR chief complaint classifier category includes fever and chief complaint text includes sore throat OR chief complaint classifier category includes "ILI"

Figure 4: Percentage of Local Reporting and National Laboratory Positive Influenza Tests by Week, 2016-17



Columbus & Franklin County Influenza Monitoring Summary – Week 47, 2016 (11/20/2016-11/26/2016)

Figure 5: Franklin County Resident Respiratory ED Visits, 2015-16, Franklin County, OH

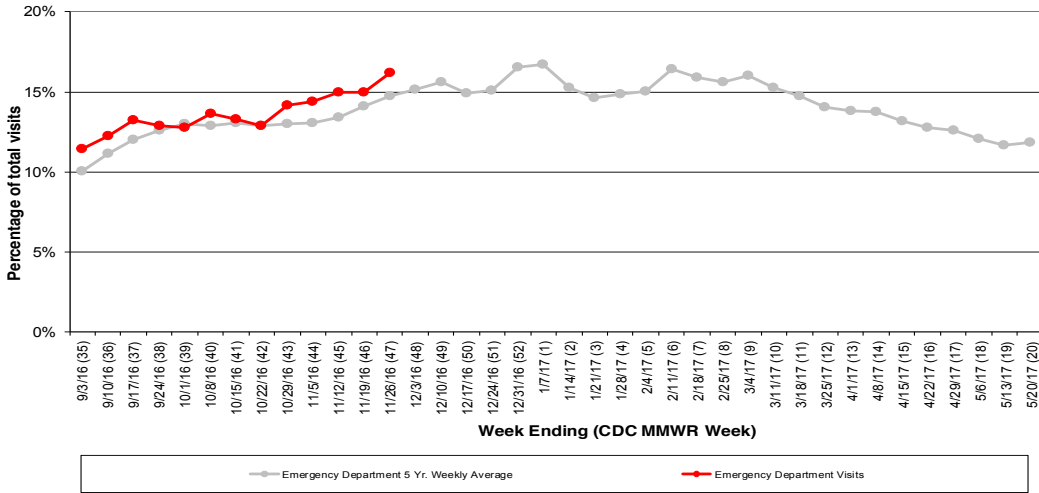


Figure 6: Selected Number of Over-the-Counter Medication Sales, 2015-16, Franklin County, OH

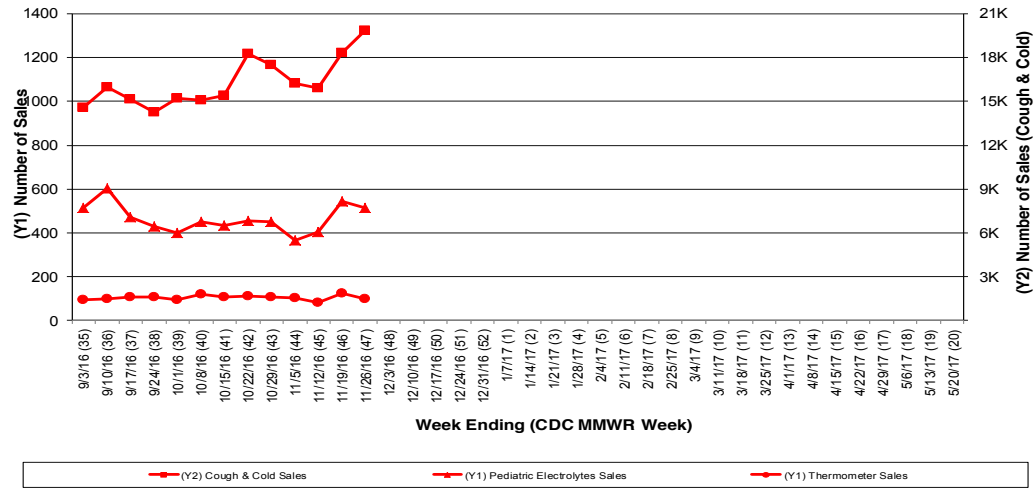
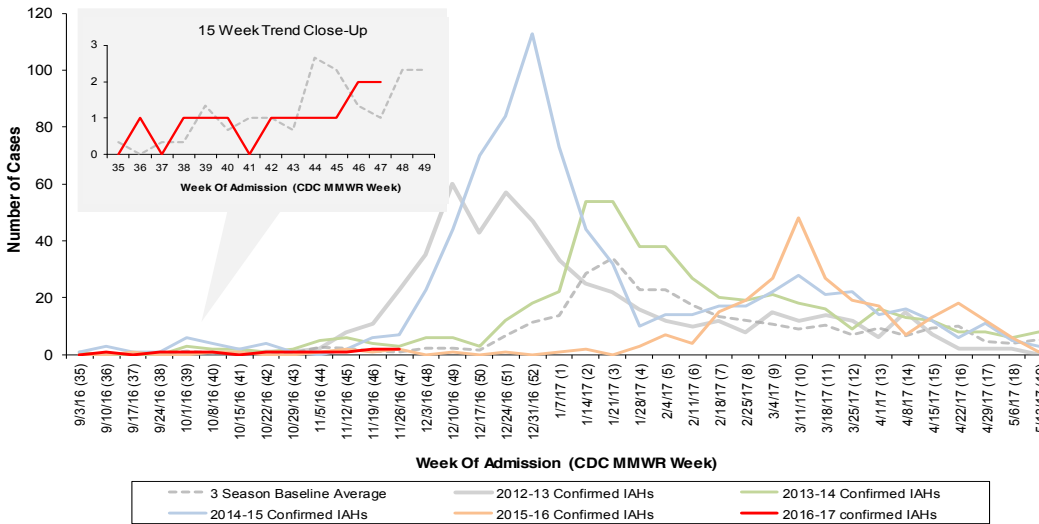


Figure 7: Franklin County Confirmed Influenza Associated Hospitalizations by Hospital Admission Week (As of 12/2/2016)



Franklin County, OH, Confirmed Influenza Hospitalization Cumulative Rates (per 100,000) by Age-Group and Admission Week, 2016-2017 Season

