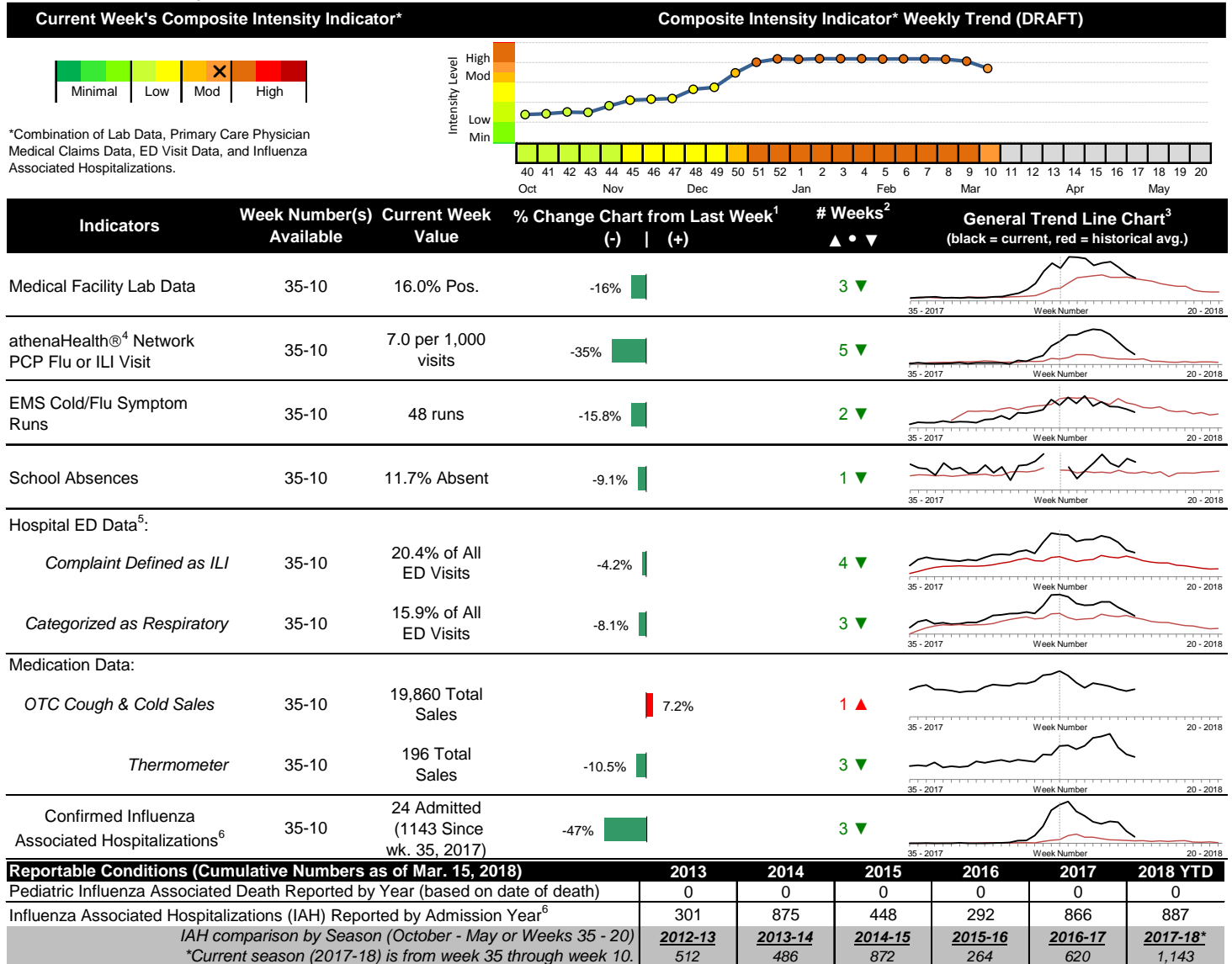


## 2017-2018 Columbus & Franklin County Seasonal Influenza Activity Weekly Summary (Week 10, Mar. 4<sup>th</sup>, 2018– Mar. 10<sup>th</sup>, 2018)

### Highlights

- In week 10 of 2018, the majority of individual preliminary local flu activity indicator trends continued to decrease. As a whole, flu intensity (composite indicator) decreased and is now moderate.
- Geographic spread and local intensity designation (Click [here](#) for definitions) = WIDESPREAD, MODERATE
- Local medical facility labs reported 1,715 tests run with 275 (16.0%) positive results for week 10 of 2018.
- The percentage of ED visits for both influenza-like-illness (ILI) and respiratory symptom visits decreased compared to last week. The percentage of ED visits for ILI is above while respiratory symptom visits is slightly above their respective baseline averages for the week.
- In week 10 of 2018, trends for local over-the-counter medication category sales tracked were mixed (decrease in thermometer, pediatric anti-fever, and adult anti-fever sales; increase in cough and cold, chest rub, and throat lozenge sales; stable electrolyte sales) compared to last week.
- Nationally, influenza activity decreased. Please [visit the CDC website for specific information](#) (National data is usually updated on Friday of each week).

### Local Flu Activity Dashboard *(All data are preliminary and may change as updated reports are received.)*



<sup>1</sup>Interpret with caution. Indicators with small numbers subject to large weekly percentage fluctuations.

<sup>2</sup>Number of weeks "▲" = Increase (>2%), "▼" = Decrease (>2%), "•" = Stable (-2% to +2%).

<sup>3</sup>Black line is current years data. Based on data availability, red line is historical average (excluding pandemic year).

<sup>4</sup>Data Source: Medical claims data from athenaHealth® (www.athenahealth.com). Rate of Flu or ILI visits to Franklin County, OH athenaHealth® network primary care practices/physicians. Claims data are subject to filing and processing time lags. Historical data are updated when they are received.

<sup>5</sup>Franklin County, OH residents only (based on zipcode). NOTE: Excludes one hospital system included in the past due to technical changes affecting visit classification assignment and numbers.

<sup>6</sup>Confirmed cases only. Based on jurisdiction equal to Franklin County or City of Columbus and admission date available in ODRS.

## **Influenza Morbidity and Influenza-Like Illness (ILI) Reports**

In week 10, the preliminary local influenza and influenza-like-illness (ILI) visit rate to athenaHealth® providers (7.0 per 1,000 visits) decreased compared to the previous week and is above its baseline average for the week (Figure 1). The week 10 percentage of all Emergency Department (ED) visits categorized as ILI decreased compared to the previous week (Figure 3) and is above its historic baseline for the week.

Nationally, during week 10 of 2018, 3.3% of patient visits reported through ILINet were due to influenza-like illness (ILI). The percentage is above the national baseline of 2.2% for week 10.

## **Laboratory Surveillance**

During week 10 of 2018, reporting Franklin County sentinel medical facility laboratories tested 1,715 specimens, with 275 (16.0%) positive (Figure 4). The total number of tests done by local reporting labs from week 35 of 2017 through week 10 of 2018 is 52,843 with 10,715 (20.3%) positives (8,119 type A, 2,588 type B, 7 type A and B, 1 type unknown).

Nationally in week 10 of 2018, clinical laboratories reported 28,157 specimens tested for influenza viruses, 4,223 (15.0%) of which were positive (1,963 type A, 2,260 type B). Public health laboratories reported testing 1,307 specimens, 561 of which were positive (242 type A – of which 55 were A(H1N1)pdm09, 173 were H3N2, and 14 were not subtyped; 319 type B – of which 173 were Yamagata lineage, 25 were Victoria lineage, and 121 where lineage was not performed). Please visit the CDC website for more information, including cumulative data.

In week 10, Ohio clinical labs reported 61,503 specimens tested for influenza this season thus far. Positive results include: (168) A(H1N1)pdm09; (584) A/H3N2; (10,077) Flu A Not Subtyped, and (2,635) Flu B (through 3/10/18). In week 10, ODH Public Health Lab reported 1,129 specimens tested for influenza from various submitters this season thus far. Positive results include: (101) A(H1N1)pdm09; (681) A/H3N2; (139) Influenza B (through 3/10/18). Please visit the ODH website for more information.

## **ED Respiratory Visits**

In the 10<sup>th</sup> week of 2018, the percentage of all ED visits categorized as respiratory decreased compared to the percentage seen the previous week and is slightly above its historic baseline for the week (Figure 5).

## **Over-the-Counter (OTC) Medication Sales**

In week 10 of 2018, trends for local over-the-counter medication category sales tracked were mixed (decrease in thermometer, pediatric anti-fever, and adult anti-fever sales; increase in cough and cold, chest rub, and throat lozenge sales; stable electrolyte sales) compared to last week.

## **Additional Influenza Activity Web Links:**

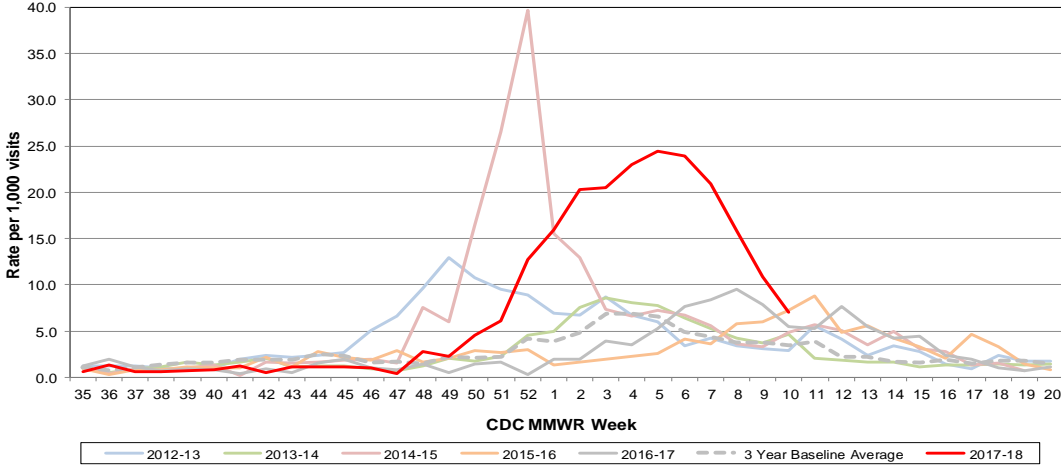
Ohio Seasonal Flu Surveillance: <http://www.odh.ohio.gov/seasflu/Ohio%20Flu%20Activity.aspx>

CDC National Seasonal Flu Surveillance Reports: <http://www.cdc.gov/flu/weekly/>

World Health Organization Situation Updates: [http://www.who.int/influenza/surveillance\\_monitoring/en/](http://www.who.int/influenza/surveillance_monitoring/en/)

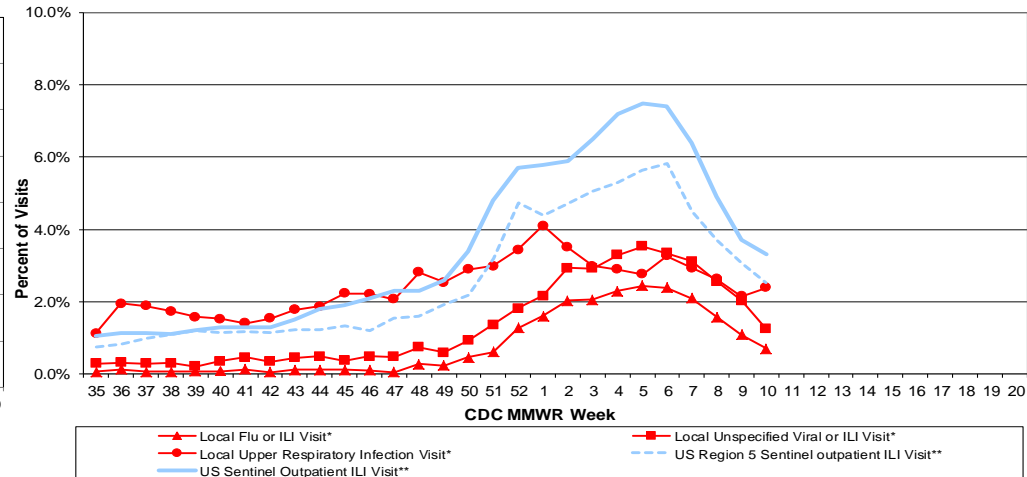
# Columbus & Franklin County Influenza Monitoring Summary – Week 10, 2018 (3/4/2018-3/10/2018)

**Figure 1: Local Participating Outpatient Primary Care Provider Influenza or Influenza-Like Illness Visit Rate\*, Franklin County, OH**



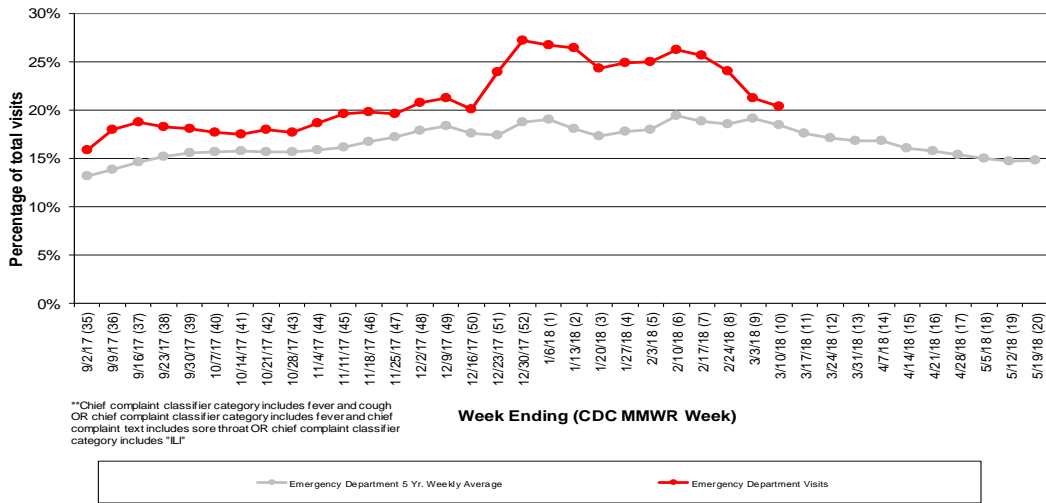
\*Source: Medical Claims data from athenaHealth®  
 Note: athenaHealth® claims data are subject to filing and processing time lags. Historical data are updated when they are received.

**Figure 2: Percentage of Local Outpatient Participating Provider\* visits for ILI and Associated Illnesses, 2017-18**



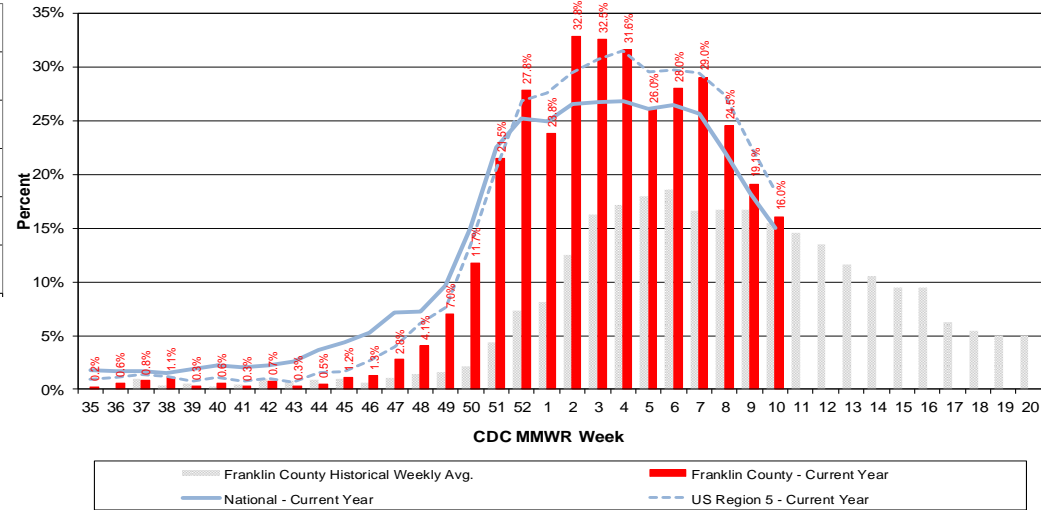
\*Source: Local medical claims data provided by athenaHealth®. Data are subject to filing and processing time lags. Historical data are updated when received.

**Figure 3: Franklin County Resident ILI Defined\*\* ED Visits, 2017-18, Franklin County, OH**



\*\*Chief complaint classifier category includes fever and cough  
 OR chief complaint classifier category includes fever and chief complaint text includes sore throat OR chief complaint classifier category includes "ILI"

**Figure 4: Percentage of Local Reporting and National Laboratory Positive Influenza Tests by Week, 2017-18**



Columbus & Franklin County Influenza Monitoring Summary – Week 10, 2018 (3/4/2018-3/10/2018)

Figure 5: Franklin County Resident Respiratory ED Visits, 2017-18, Franklin County, OH

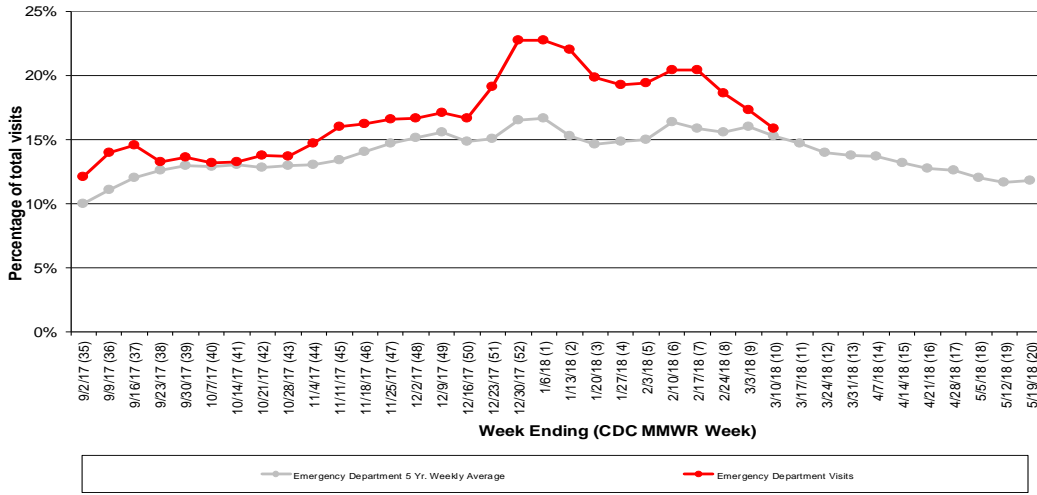


Figure 6: Selected Number of Over-the-Counter Medication Total Sales, 2017-18, Franklin County, OH

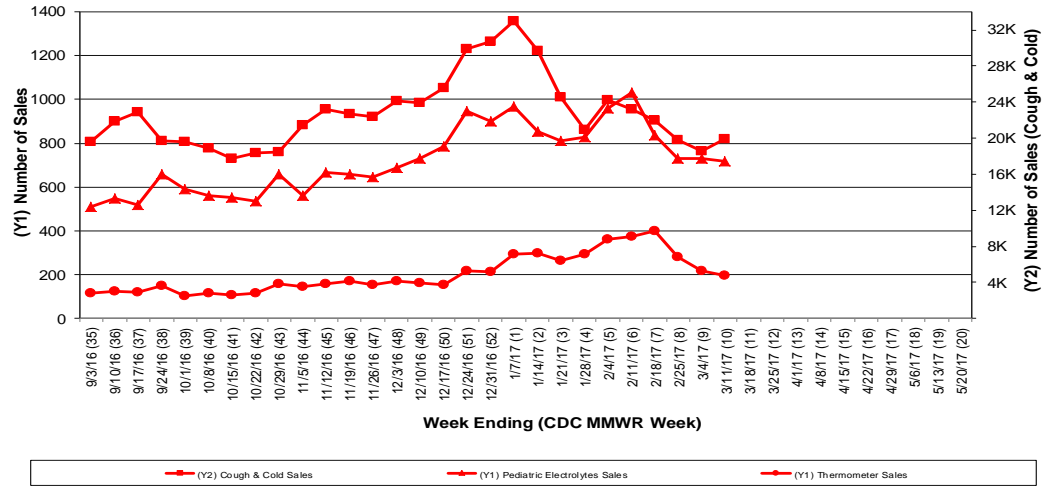
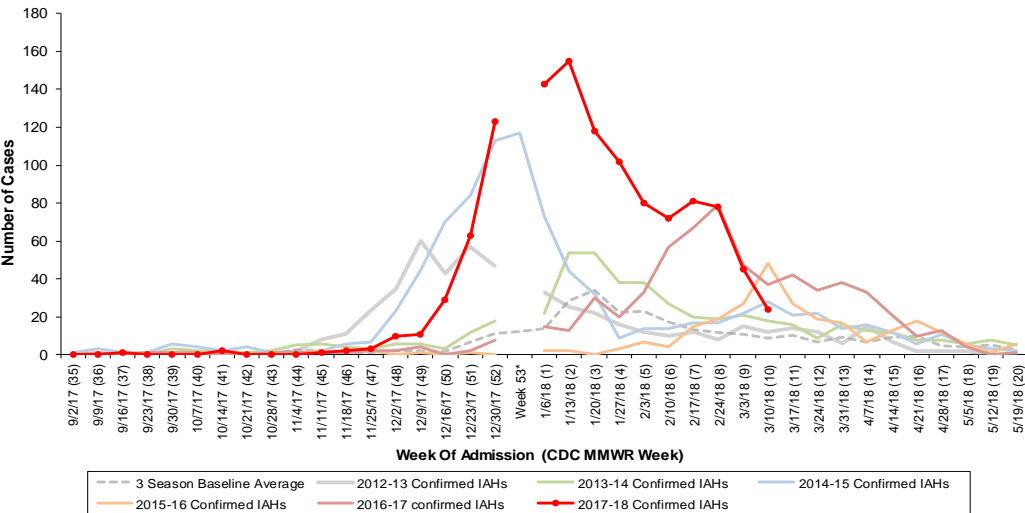
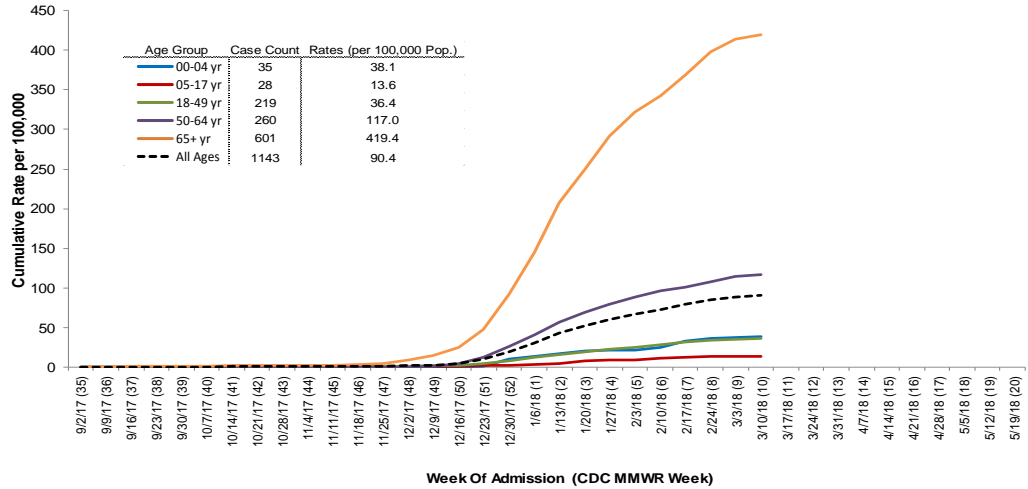


Figure 7: Columbus and Franklin County Jurisdiction Confirmed Influenza Associated Hospitalizations by Hospital Admission Week (As of 3/15/2018)



Columbus and Franklin County, OH Jurisdiction Confirmed Influenza Hospitalization Cumulative Rates (per 100,000) by Age-Group and Admission Week, 2017-2018 Season



\*Note: Certain years have a 53rd week (e.g., season 2014-15) based on CDC's MMWR Weeks.