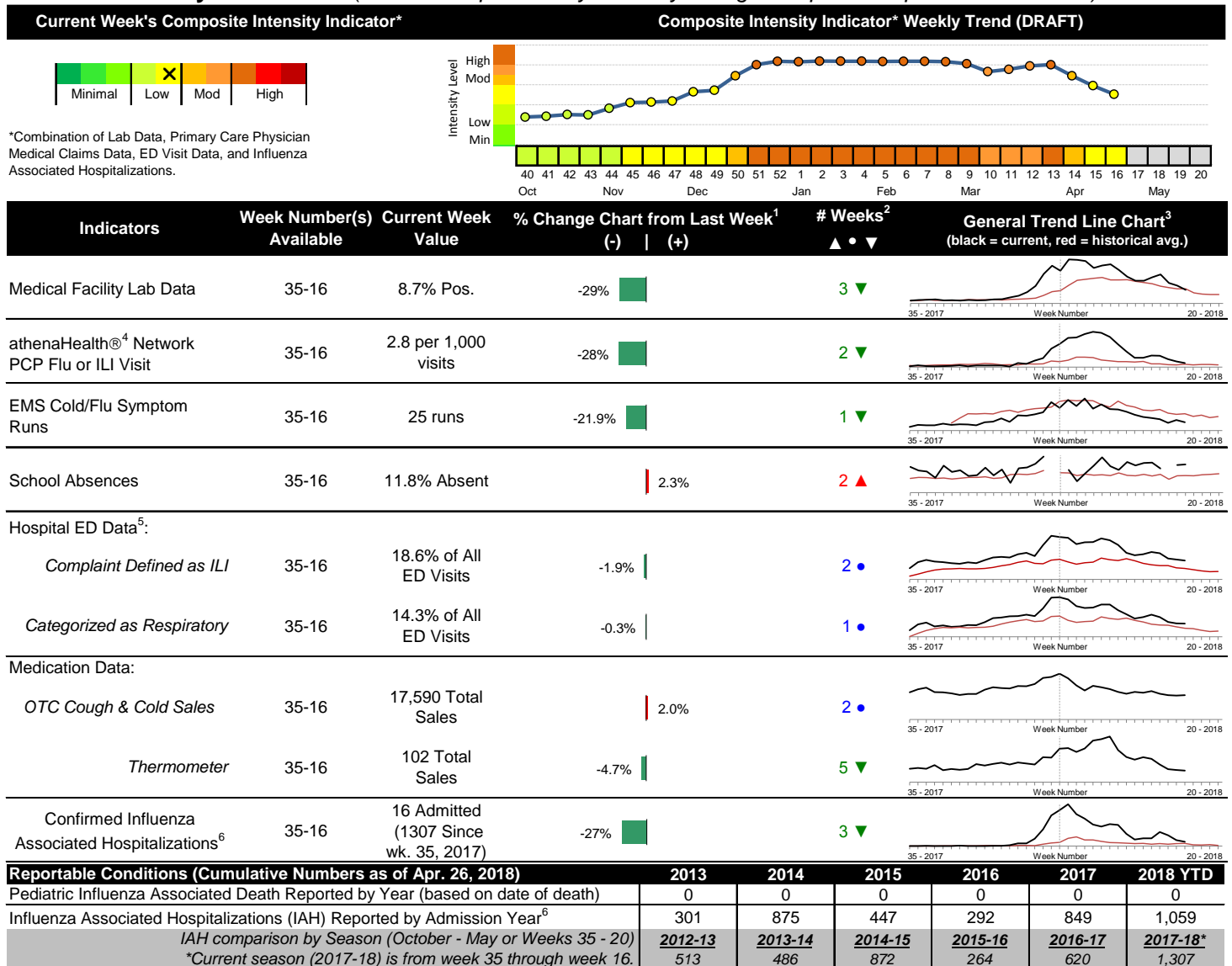


# 2017-2018 Columbus & Franklin County Seasonal Influenza Activity Weekly Summary (Week 16, Apr. 15<sup>th</sup>, 2018– Apr. 21<sup>st</sup>, 2018)

## Highlights

- In week 16 of 2018, trends for individual local flu activity indicators were mixed with the majority of key indicators decreasing. As a whole, flu intensity (composite indicator) decreased and is low.
- Geographic spread and local intensity designation (Click [here](#) for definitions) = REGIONAL, LOW
- Local medical facility labs reported 1,141 tests run with 99 (8.7%) positive results for week 16 of 2018.
- The percentage of ED visits for both influenza-like-illness (ILI) and respiratory symptoms were stable compared to last week. The percentage of ED visits for ILI and respiratory symptoms are above their respective baseline averages for the week.
- In week 16 of 2018, the trends for local over-the-counter medication category sales tracked were mixed (decrease in thermometer and chest rub sales; increase in electrolyte, pediatric anti-fever, adult anti-fever sales, and throat lozenge sales; stable cough and cold sales) compared to last week.
- Nationally, influenza activity decreased. Please [visit the CDC website for specific information](#).

## Local Flu Activity Dashboard *(All data are preliminary and may change as updated reports are received.)*



<sup>1</sup>Interpret with caution. Indicators with small numbers subject to large weekly percentage fluctuations.

<sup>2</sup>Number of weeks "▲" = Increase (>2%), "▼" = Decrease (>2%), "•" = Stable (-2% to +2%).

<sup>3</sup>Black line is current years data. Based on data availability, red line is historical average (excluding pandemic year).

<sup>4</sup>Data Source: Medical claims data from athenaHealth® (www.athenahealth.com). Rate of Flu or ILI visits to Franklin County, OH athenaHealth® network primary care practices/physicians. Claims data are subject to filing and processing time lags. Historical data are updated when they are received.

<sup>5</sup>Franklin County, OH residents only (based on zipcode). NOTE: Excludes one hospital system included in the past due to technical changes affecting visit classification assignment and numbers.

<sup>6</sup>Confirmed cases only. Based on jurisdiction equal to Franklin County or City of Columbus and admission date available in ODRS.

## **Influenza Morbidity and Influenza-Like Illness (ILI) Reports**

In week 16, the preliminary local influenza and influenza-like-illness (ILI) visit rate to athenaHealth® providers (2.8 per 1,000 visits) decreased compared to the previous week and is approaching its baseline average for the week (Figure 1). The week 16 percentage of all Emergency Department (ED) visits categorized as ILI was stable compared to the previous week (Figure 3) and is above its historic baseline for the week.

Nationally, during week 16 of 2018, 1.7% of patient visits reported through ILINet were due to influenza-like illness (ILI). The percentage is below the national baseline of 2.2% for week 16.

## **Laboratory Surveillance**

During week 16 of 2018, reporting Franklin County sentinel medical facility laboratories tested 1,141 specimens, with 99 (8.7%) positive (Figure 4). The total number of tests done by local reporting labs from week 35 of 2017 through week 16 of 2018 is 61,904 with 12,129 (19.6%) positives (8,479 type A, 3,642 type B, 7 type A and B, 1 type unknown).

Nationally in week 16 of 2018, clinical laboratories reported 15,801 specimens tested for influenza viruses, 1,403 (8.9%) of which were positive (429 type A, 974 type B). Public health laboratories reported testing 619 specimens, 216 of which were positive (64 type A – of which 20 were A(H1N1)pdm09, 43 were H3N2, and 1 was not subtyped; 189 type B – of which 105 were Yamagata lineage, 21 were Victoria lineage, and 26 where lineage was not performed). Please visit the CDC website for more information, including cumulative data.

Week 16 Ohio data was not available at the time of this publication. In week 15, Ohio clinical labs reported 74,291 specimens tested for influenza this season thus far. Positive results include: (195) A(H1N1)pdm09; (636) A/H3N2; (11,199) Flu A Not Subtyped, and (4,107) Flu B (through 4/14/18). In week 15, ODH Public Health Lab reported 1,188 specimens tested for influenza from various submitters this season thus far. Positive results include: (104) A(H1N1)pdm09; (683) A/H3N2; (195) Influenza B (through 4/14/18). Please visit the ODH website for more information.

## **ED Respiratory Visits**

In the 16<sup>th</sup> week of 2018, the percentage of all ED visits categorized as respiratory was stable compared to the percentage seen the previous week and is above its historic baseline for the week (Figure 5).

## **Over-the-Counter (OTC) Medication Sales**

In week 16 of 2018, the trends for local over-the-counter medication category sales tracked were mixed (decrease in thermometer and chest rub sales; increase in electrolyte, pediatric anti-fever, adult anti-fever sales, and throat lozenge sales; stable cough and cold sales) compared to last week.

## **Additional Influenza Activity Web Links:**

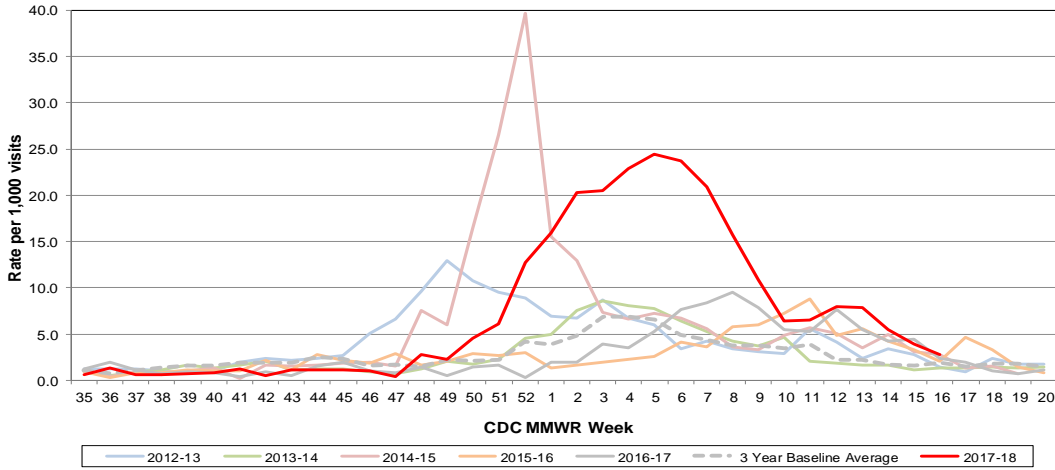
Ohio Seasonal Flu Surveillance: <http://www.odh.ohio.gov/seasflu/Ohio%20Flu%20Activity.aspx>

CDC National Seasonal Flu Surveillance Reports: <http://www.cdc.gov/flu/weekly/>

World Health Organization Situation Updates: [http://www.who.int/influenza/surveillance\\_monitoring/en/](http://www.who.int/influenza/surveillance_monitoring/en/)

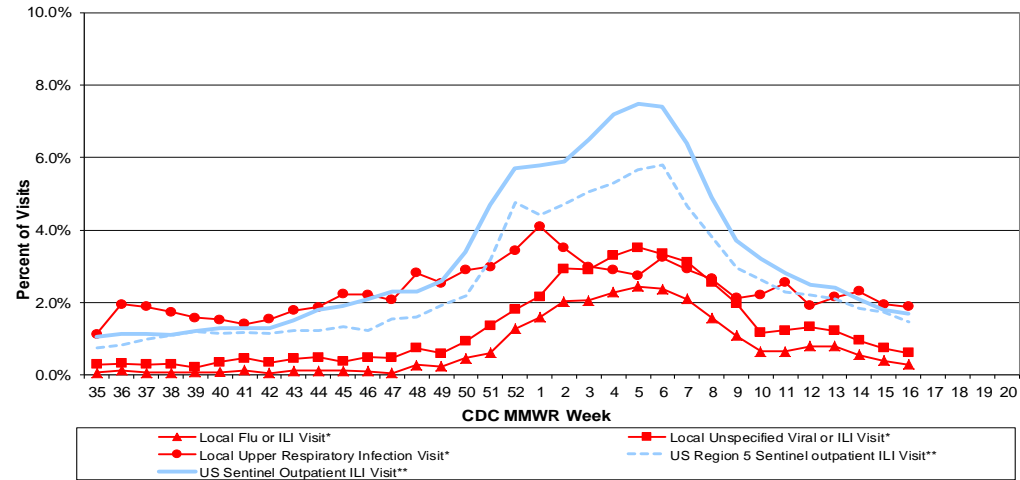
# Columbus & Franklin County Influenza Monitoring Summary – Week 16, 2018 (4/15/2018-4/21/2018)

**Figure 1: Local Participating Outpatient Primary Care Provider Influenza or Influenza-Like Illness Visit Rate\*, Franklin County, OH**



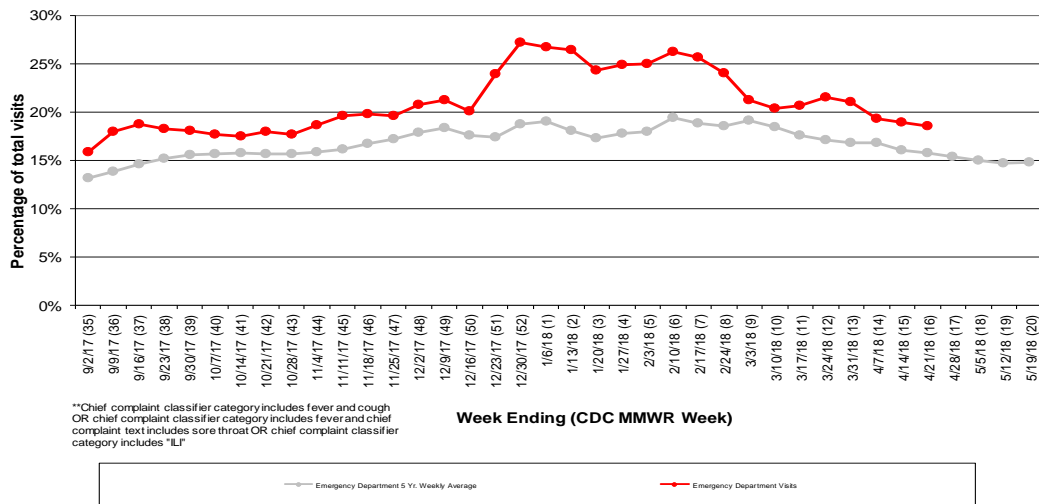
\*Source: Medical Claims data from athenaHealth®  
 Note: athenaHealth® claims data are subject to filing and processing time lags. Historical data are updated when they are received.

**Figure 2: Percentage of Local Outpatient Participating Provider\* visits for ILI and Associated Illnesses, 2017-18**



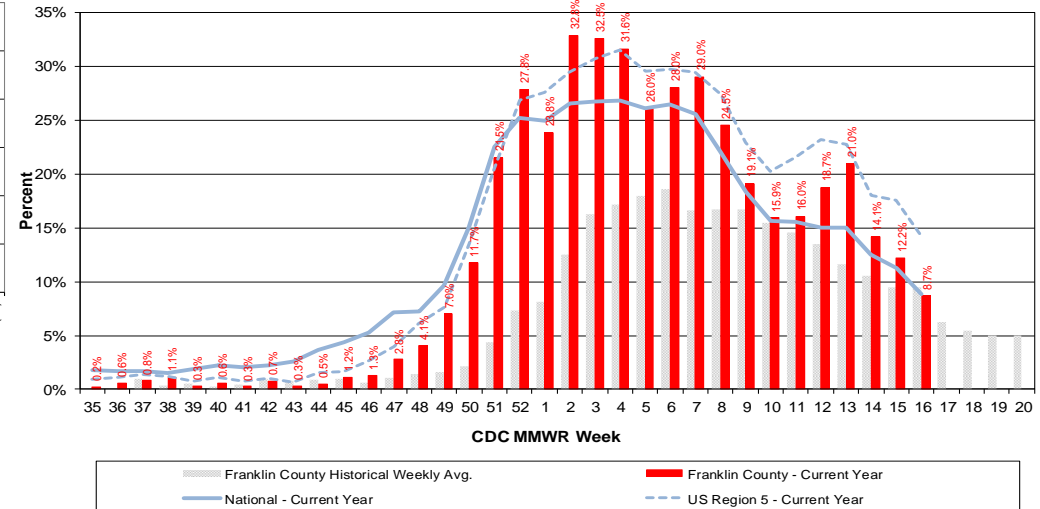
\*Source: Local medical claims data provided by athenaHealth®. Data are subject to filing and processing time lags. Historical data are updated when received.

**Figure 3: Franklin County Resident ILI Defined\*\* ED Visits, 2017-18, Franklin County, OH**



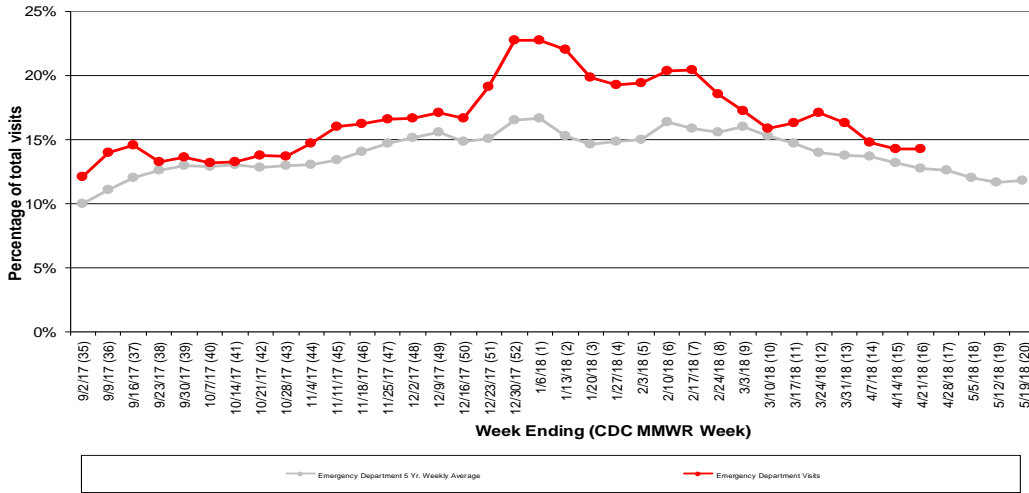
\*\*Chief complaint classifier category includes fever and cough  
 OR chief complaint classifier category includes fever and chief complaint text includes sore throat OR chief complaint classifier category includes "ILI"

**Figure 4: Percentage of Local Reporting and National Laboratory Positive Influenza Tests by Week, 2017-18**

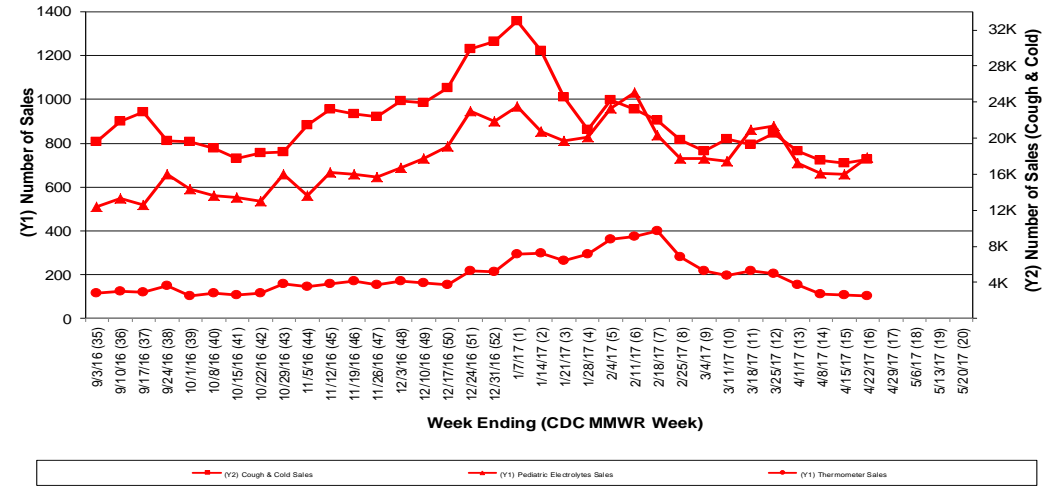


## Columbus & Franklin County Influenza Monitoring Summary – Week 16, 2018 (4/15/2018-4/21/2018)

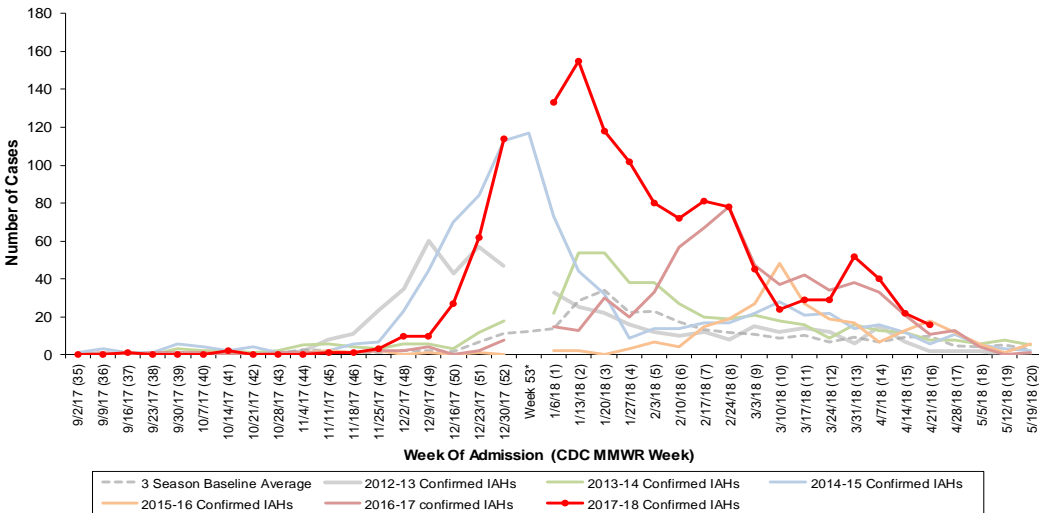
**Figure 5: Franklin County Resident Respiratory ED Visits, 2017-18, Franklin County, OH**



**Figure 6: Selected Number of Over-the-Counter Medication Total Sales, 2017-18, Franklin County, OH**



**Figure 7: Columbus and Franklin County Jurisdiction Confirmed Influenza Associated Hospitalizations by Hospital Admission Week (As of 4/26/2018)**



\*Note: Certain years have a 53rd week (e.g., season 2014-15) based on CDCs MMWR Weeks.

**Columbus and Franklin County, OH Jurisdiction Confirmed Influenza Hospitalization Cumulative Rates (per 100,000) by Age-Group and Admission Week, 2017-2018 Season**

