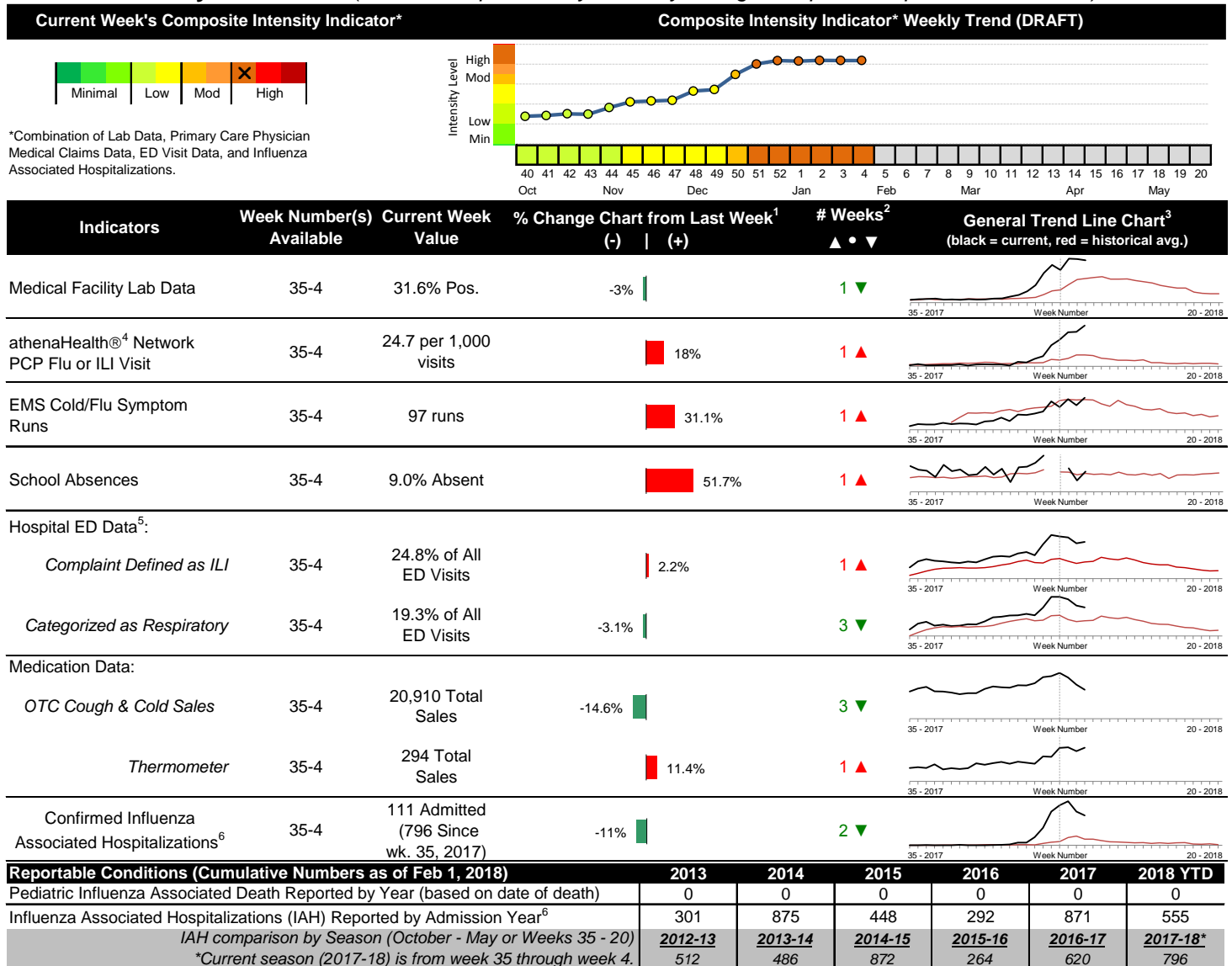


### Highlights

- In week 4 of 2018, despite recent decreases in some of the individual preliminary local flu activity indicator values, key indicators continue to be elevated. As a whole, flu intensity (composite indicator) continues to be high.
- Geographic spread and local intensity designation (Click [here](#) for definitions) = WIDESPREAD, HIGH
- Local medical facility labs reported 3,295 tests run with 1,040 (31.6%) positive results for week 4 of 2018.
- The percentage of ED visits for influenza-like-illness (ILI) increased slightly, while respiratory symptom visits decreased slightly compared to last week. The percentage of ED visits for both ILI and respiratory symptoms continue to be above their respective baseline averages for the week.
- In week 4 of 2018, trends for local over-the-counter medication category sales were mixed (increase in electrolyte, thermometer, and throat lozenge sales; decrease in cough/cold and chest rub sales; stable pediatric anti-fever and adult anti-fever sales) compared to last week.
- Nationally, influenza activity increased in week 4 of 2018. Please [visit the CDC website for specific information](#) (National data is usually updated on Friday of each week).

### Local Flu Activity Dashboard (All data are preliminary and may change as updated reports are received.)



<sup>1</sup>Interpret with caution. Indicators with small numbers subject to large weekly percentage fluctuations.

<sup>2</sup>Number of weeks "▲" = Increase (>2%), "▼" = Decrease (>2%), "●" = Stable (-2% to +2%).

<sup>3</sup>Black line is current years data. Based on data availability, red line is historical average (excluding pandemic year).

<sup>4</sup>Data Source: Medical claims data from athenaHealth® (www.athenahealth.com). Rate of Flu or ILI visits to Franklin County, OH athenaHealth® network primary care practices/physicians. Claims data are subject to filing and processing time lags. Historical data are updated when they are received.

<sup>5</sup>Franklin County, OH residents only (based on zipcode). NOTE: Excludes one hospital system included in the past due to technical changes affecting visit classification assignment and numbers.

<sup>6</sup>Confirmed cases only. Based on jurisdiction equal to Franklin County or City of Columbus and admission date available in ODRS.

## **Influenza Morbidity and Influenza-Like Illness (ILI) Reports**

In week 4, the preliminary local influenza and influenza-like-illness (ILI) visit rate to athenaHealth® providers (24.7 per 1,000 visits) increased compared to the previous week and is above its baseline average for the week (Figure 1). The week 4 percentage of all Emergency Department (ED) visits categorized as ILI increased slightly compared to the previous week (Figure 3) and is above its historic baseline for the week.

Nationally, during week 4 of 2018, 7.1% of patient visits reported through ILINet were due to influenza-like illness (ILI). The percentage is above the national baseline of 2.2% for week 4.

## **Laboratory Surveillance**

During week 4 of 2018, reporting Franklin County sentinel medical facility laboratories tested 3,295 specimens, with 1,040 (31.6%) positive (Figure 4). The total number of tests done by local reporting labs from week 35 of 2017 through week 4 of 2018 is 33,387 with 5,803 (17.4%) positives (5,155 type A, 645 type B, 2 type A and B, 1 type unknown).

Nationally in week 4 of 2018, clinical laboratories reported 59,200 specimens tested for influenza viruses, 15,427 (26.1%) of which were positive (11,792 type A, 3,635 type B). Public health laboratories reported testing 2,660 specimens, 1,597 of which were positive (1,280 type A – of which 189 were A(H1N1)pdm09, 1,017 were H3N2, and 74 were not subtyped; 317 type B – of which 201 were Yamagata lineage, 13 were Victoria lineage, and 103 where lineage was not performed). Please visit the CDC website for more information, including cumulative data.

In week 4, Ohio clinical labs reported 38,806 specimens tested for influenza this season thus far. Positive results include: (30) A(H1N1)pdm09; (239) A/H3N2; (5,720) Flu A Not Subtyped, and (728) Flu B (through 1/27/18). In week 4, ODH Public Health Lab reported 742 specimens tested for influenza from various submitters this season thus far. Positive results include: (62) A(H1N1)pdm09; (537) A/H3N2; (42) Influenza B (through 1/27/18). Please visit the ODH website for more information.

## **ED Respiratory Visits**

In the 4<sup>th</sup> week of 2018, the percentage of all ED visits categorized as respiratory decreased slightly compared to the percentage seen the previous week and is above its historic baseline for the week (Figure 5).

## **Over-the-Counter (OTC) Medication Sales**

In week 4 of 2018, trends for local over-the-counter medication category sales were mixed (increase in electrolyte, thermometer, and throat lozenge sales; decrease in cough/cold and chest rub sales; stable pediatric anti-fever and adult anti-fever sales) compared to last week.

## **Additional Influenza Activity Web Links:**

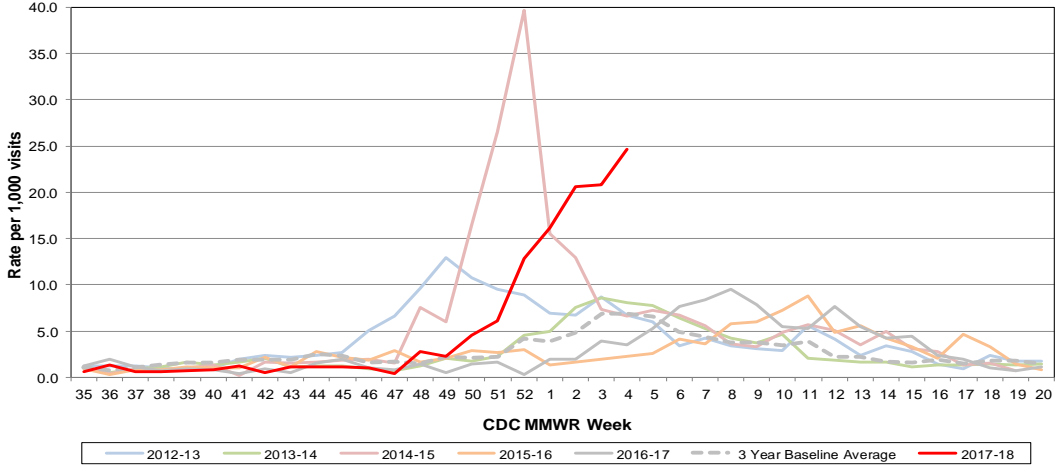
Ohio Seasonal Flu Surveillance: <http://www.odh.ohio.gov/seasflu/Ohio%20Flu%20Activity.aspx>

CDC National Seasonal Flu Surveillance Reports: <http://www.cdc.gov/flu/weekly/>

World Health Organization Situation Updates: [http://www.who.int/influenza/surveillance\\_monitoring/en/](http://www.who.int/influenza/surveillance_monitoring/en/)

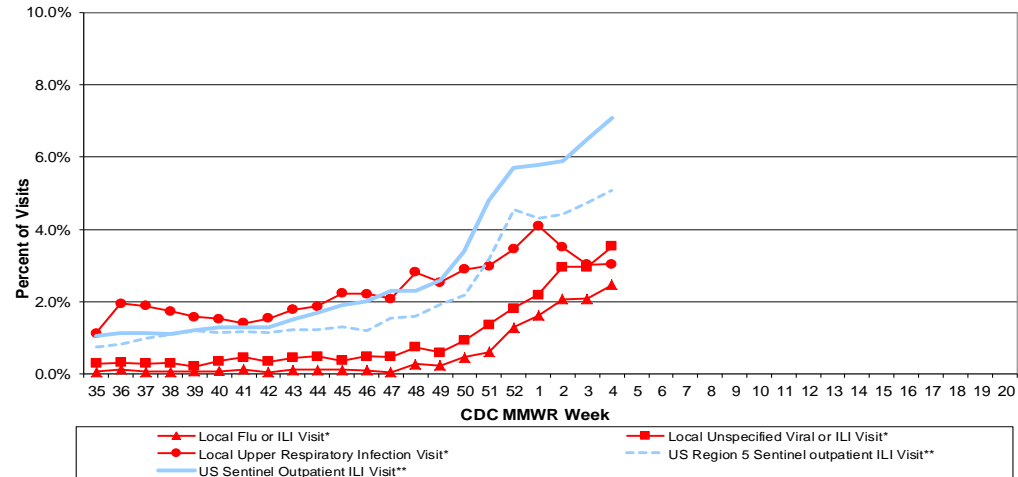
# Columbus & Franklin County Influenza Monitoring Summary – Week 4, 2018 (1/21/2018-1/27/2018)

**Figure 1: Local Participating Outpatient Primary Care Provider Influenza or Influenza-Like Illness Visit Rate\*, Franklin County, OH**



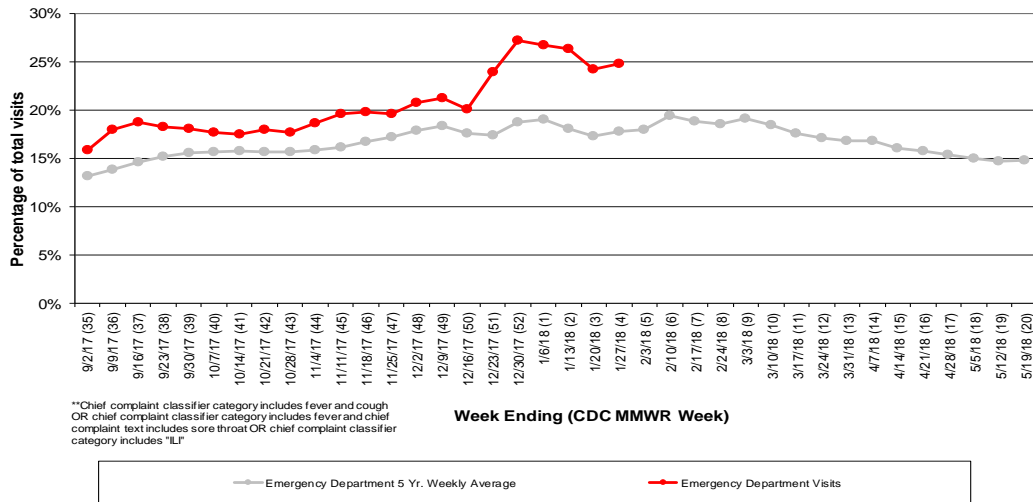
\*Source: Medical Claims data from athenaHealth®  
 Note: athenaHealth® claims data are subject to filing and processing time lags. Historical data are updated when they are received.

**Figure 2: Percentage of Local Outpatient Participating Provider\* visits for ILI and Associated Illnesses, 2017-18**



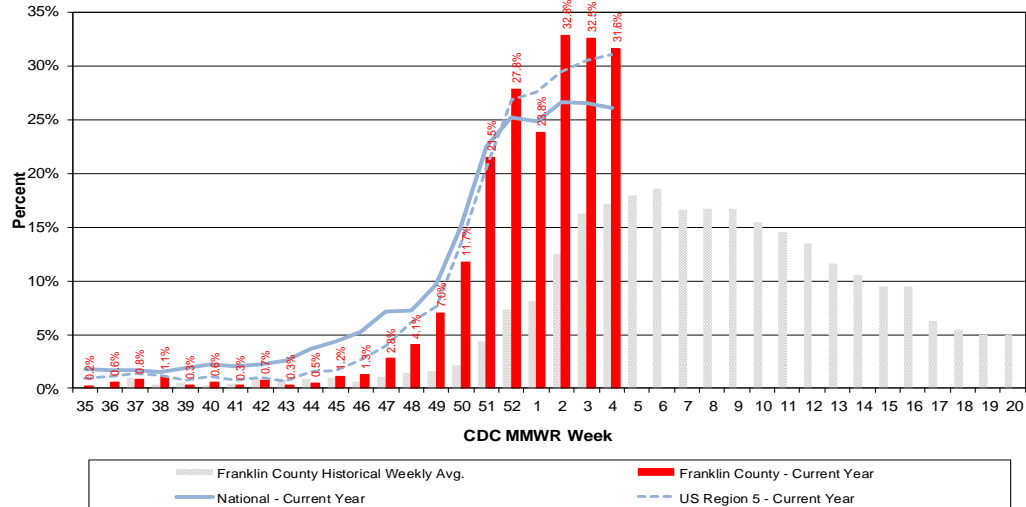
\*Source: Local medical claims data provided by athenaHealth®. Data are subject to filing and processing time lags. Historical data are updated when received.

**Figure 3: Franklin County Resident ILI Defined\*\* ED Visits, 2017-18, Franklin County, OH**



\*\*Chief complaint classifier category includes fever and cough OR chief complaint classifier category includes fever and chief complaint text includes sore throat OR chief complaint classifier category includes "IL"

**Figure 4: Percentage of Local Reporting and National Laboratory Positive Influenza Tests by Week, 2017-18**



Columbus & Franklin County Influenza Monitoring Summary – Week 4, 2018 (1/21/2018-1/27/2018)

Figure 5: Franklin County Resident Respiratory ED Visits, 2017-18, Franklin County, OH

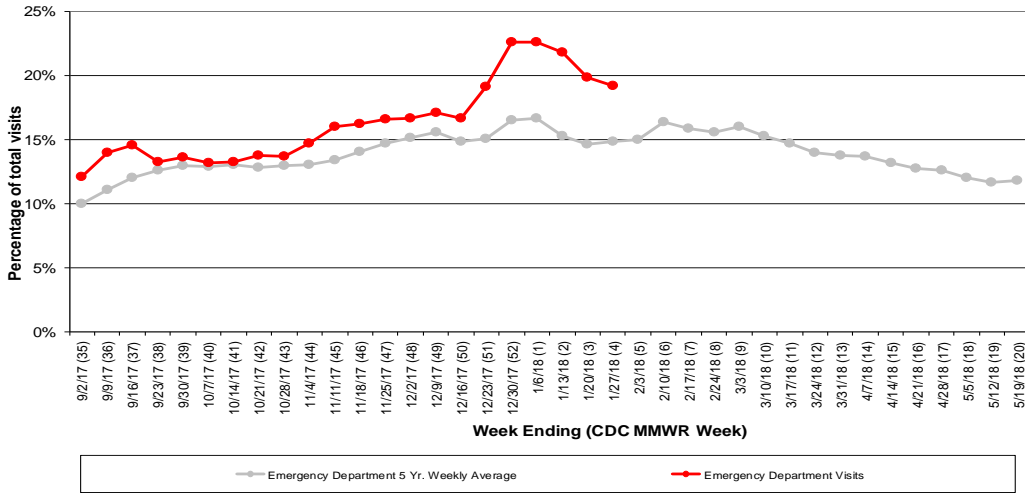


Figure 6: Selected Number of Over-the-Counter Medication Total Sales, 2017-18, Franklin County, OH

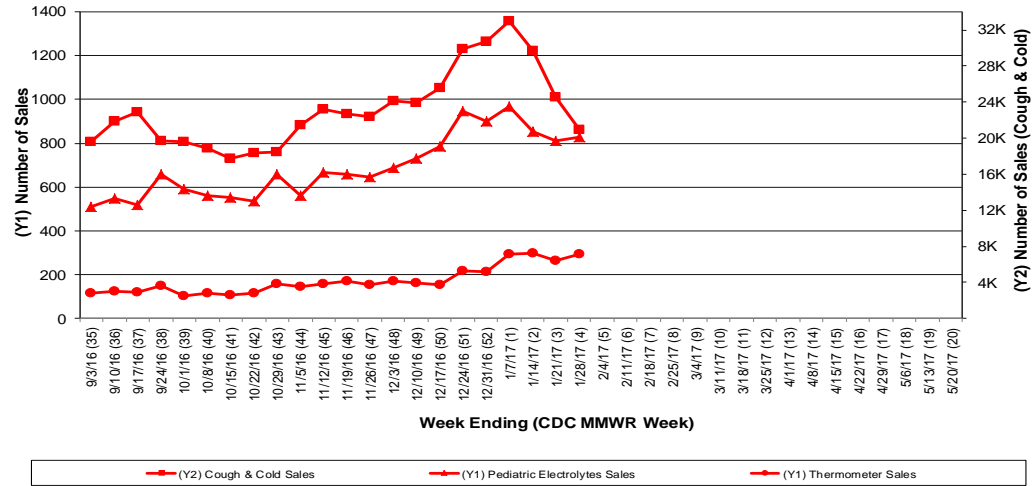
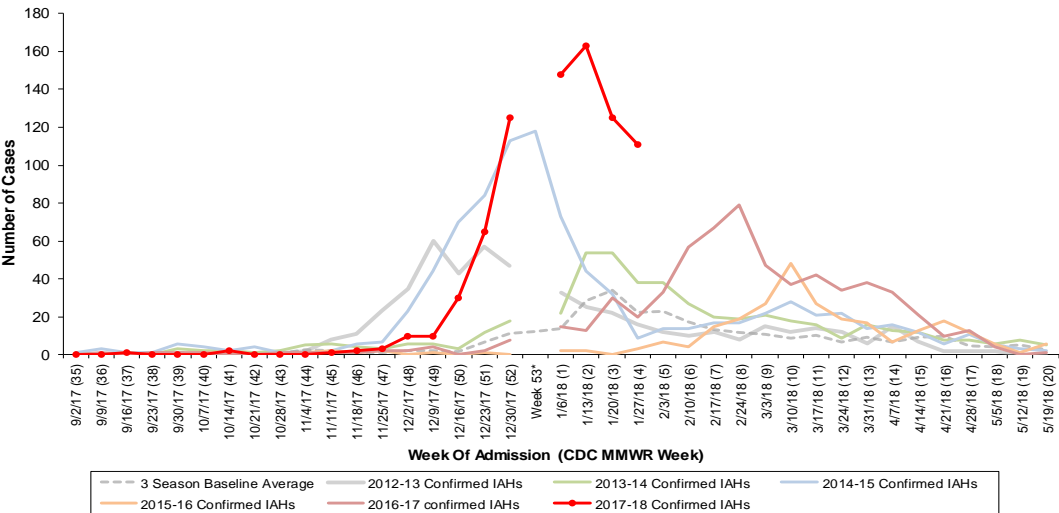


Figure 7: Franklin County Confirmed Influenza Associated Hospitalizations by Hospital Admission Week (As of 2/1/2018)



\*Note: Certain years have a 53rd week (e.g., season 2014-15) based on CDCs MMWR Weeks.

Franklin County, OH, Confirmed Influenza Hospitalization Cumulative Rates (per 100,000) by Age-Group and Admission Week, 2017-2018 Season

