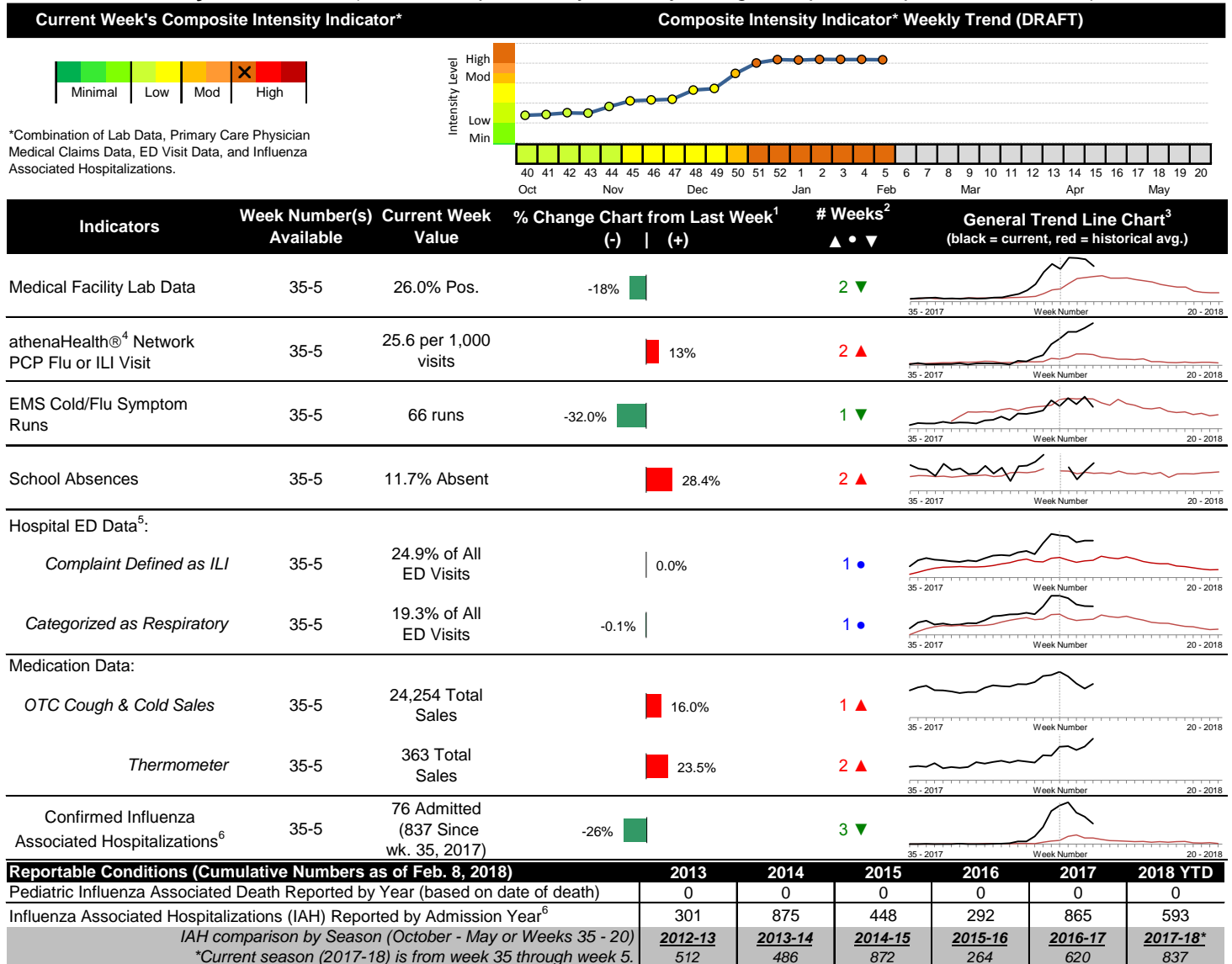


Highlights

- In week 5 of 2018, despite recent decreases in some of the individual preliminary local flu activity indicator values, key indicators continue to be elevated. As a whole, flu intensity (composite indicator) continues to be high.
- Geographic spread and local intensity designation (Click [here](#) for definitions) = WIDESPREAD, HIGH
- Local medical facility labs reported 4,105 tests run with 1,068 (26.0%) positive results for week 5 of 2018.
- The percentage of ED visits for both influenza-like-illness (ILI) and respiratory symptom visits were stable compared to last week. The percentage of ED visits for both ILI and respiratory symptoms continue to be above their respective baseline averages for the week.
- In week 5 of 2018, all local over-the-counter medication category sales tracked increased (increase in cough and cold, electrolyte, thermometer, chest rub, pediatric anti-fever, adult anti-fever, and throat lozenge sales) compared to last week.
- Nationally, influenza activity increased in week 5 of 2018. Please [visit the CDC website for specific information](#) (National data is usually updated on Friday of each week).

Local Flu Activity Dashboard *(All data are preliminary and may change as updated reports are received.)*



¹Interpret with caution. Indicators with small numbers subject to large weekly percentage fluctuations.

²Number of weeks "▲" = Increase (>2%), "▼" = Decrease (>2%), "●" = Stable (-2% to +2%).

³Black line is current years data. Based on data availability, red line is historical average (excluding pandemic year).

⁴Data Source: Medical claims data from athenaHealth® (www.athenahealth.com). Rate of Flu or ILI visits to Franklin County, OH athenaHealth® network primary care practices/physicians. Claims data are subject to filing and processing time lags. Historical data are updated when they are received.

⁵Franklin County, OH residents only (based on zipcode). NOTE: Excludes one hospital system included in the past due to technical changes affecting visit classification assignment and numbers.

⁶Confirmed cases only. Based on jurisdiction equal to Franklin County or City of Columbus and admission date available in ODRS.

Influenza Morbidity and Influenza-Like Illness (ILI) Reports

In week 5, the preliminary local influenza and influenza-like-illness (ILI) visit rate to athenaHealth® providers (25.6 per 1,000 visits) increased compared to the previous week and is above its baseline average for the week (Figure 1). The week 5 percentage of all Emergency Department (ED) visits categorized as ILI was stable compared to the previous week (Figure 3) and is above its historic baseline for the week.

Nationally, during week 5 of 2018, 7.7% of patient visits reported through ILINet were due to influenza-like illness (ILI). The percentage is above the national baseline of 2.2% for week 5.

Laboratory Surveillance

During week 5 of 2018, reporting Franklin County sentinel medical facility laboratories tested 4,105 specimens, with 1,068 (26.0%) positive (Figure 4). The total number of tests done by local reporting labs from week 35 of 2017 through week 5 of 2018 is 37,492 with 6,871 (18.3%) positives (5,980 type A, 888 type B, 2 type A and B, 1 type unknown).

Nationally in week 5 of 2018, clinical laboratories reported 63,180 specimens tested for influenza viruses, 16,641 (26.3%) of which were positive (11,517 type A, 5,124 type B). Public health laboratories reported testing 2,608 specimens, 1,453 of which were positive (1,065 type A – of which 144 were A(H1N1)pdm09, 834 were H3N2, and 87 were not subtyped; 388 type B – of which 266 were Yamagata lineage, 22 were Victoria lineage, and 100 where lineage was not performed). Please visit the CDC website for more information, including cumulative data.

In week 5, Ohio clinical labs reported 41,143 specimens tested for influenza this season thus far. Positive results include: (43) A(H1N1)pdm09; (291) A/H3N2; (6,657) Flu A Not Subtyped, and (948) Flu B (through 2/3/18). In week 5, ODH Public Health Lab reported 813 specimens tested for influenza from various submitters this season thus far. Positive results include: (67) A(H1N1)pdm09; (571) A/H3N2; (53) Influenza B (through 2/3/18). Please visit the ODH website for more information.

ED Respiratory Visits

In the 5th week of 2018, the percentage of all ED visits categorized as respiratory was stable compared to the percentage seen the previous week and is above its historic baseline for the week (Figure 5).

Over-the-Counter (OTC) Medication Sales

In week 5 of 2018, all local over-the-counter medication category sales tracked increased (increase in cough and cold, electrolyte, thermometer, chest rub, pediatric anti-fever, adult anti-fever, and throat lozenge sales) compared to last week.

Additional Influenza Activity Web Links:

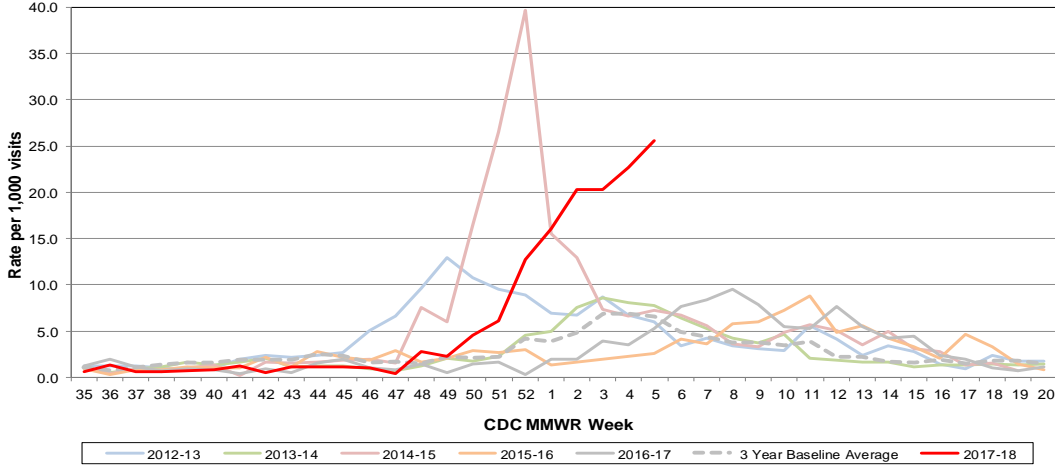
Ohio Seasonal Flu Surveillance: <http://www.odh.ohio.gov/seasflu/Ohio%20Flu%20Activity.aspx>

CDC National Seasonal Flu Surveillance Reports: <http://www.cdc.gov/flu/weekly/>

World Health Organization Situation Updates: http://www.who.int/influenza/surveillance_monitoring/en/

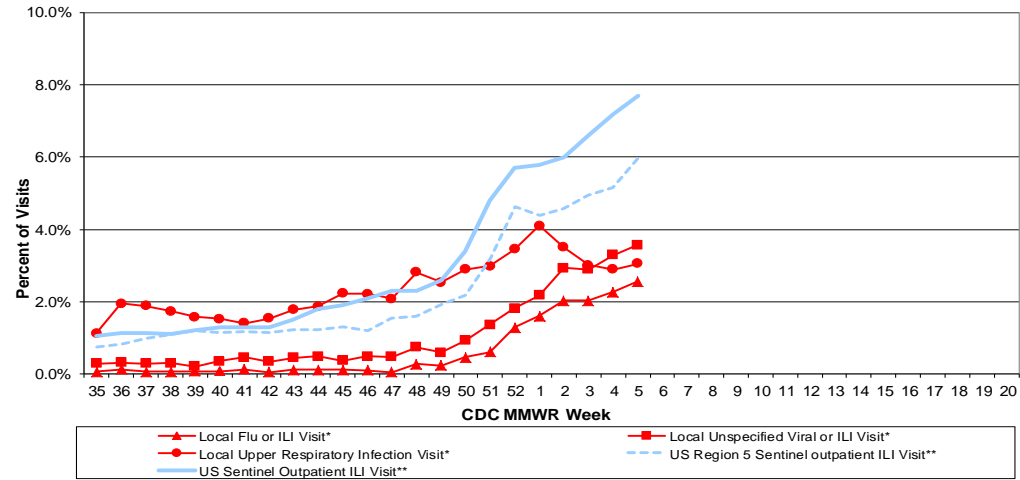
Columbus & Franklin County Influenza Monitoring Summary – Week 5, 2018 (1/28/2018-2/3/2018)

Figure 1: Local Participating Outpatient Primary Care Provider Influenza or Influenza-Like Illness Visit Rate*, Franklin County, OH



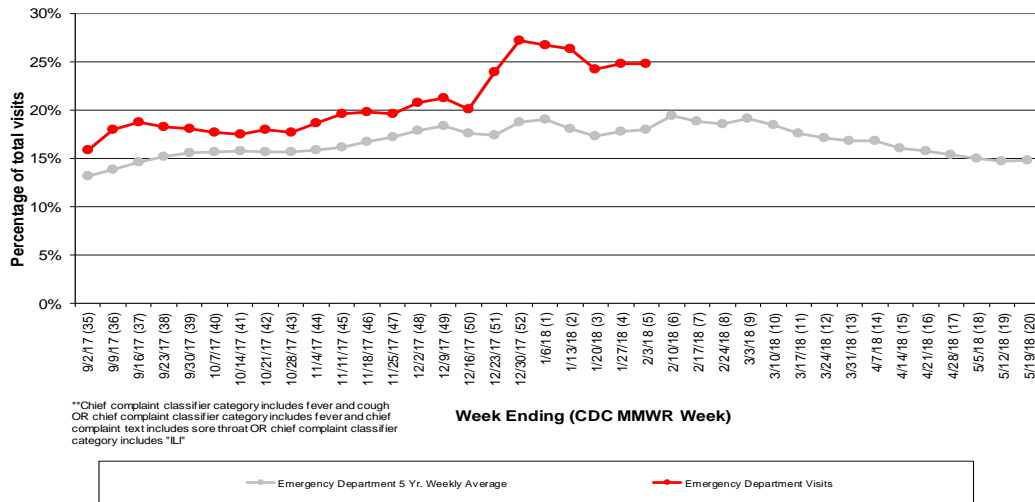
*Source: Medical Claims data from athenaHealth®
 Note: athenaHealth® claims data are subject to filing and processing time lags. Historical data are updated when they are received.

Figure 2: Percentage of Local Outpatient Participating Provider* visits for ILI and Associated Illnesses, 2017-18



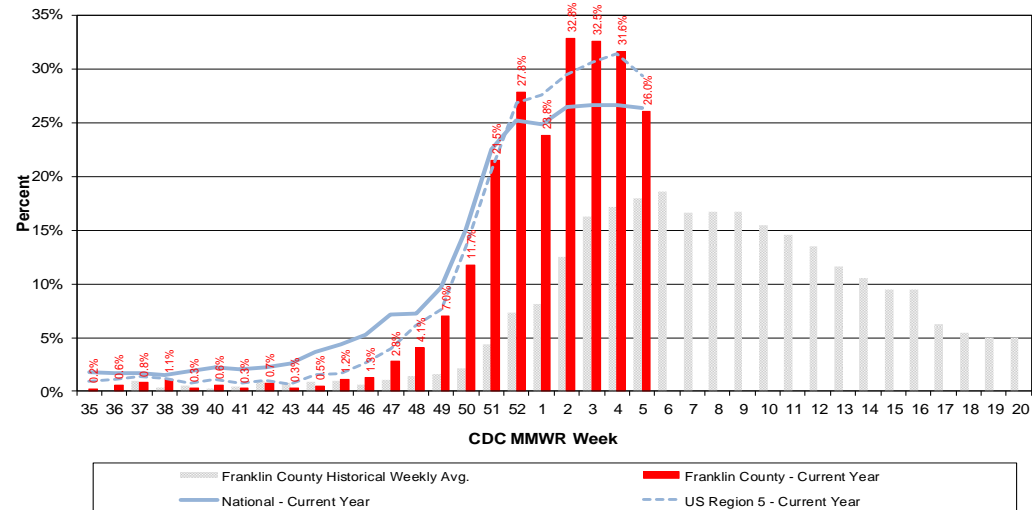
*Source: Local medical claims data provided by athenaHealth®. Data are subject to filing and processing time lags. Historical data are updated when received.

Figure 3: Franklin County Resident ILI Defined ED Visits, 2017-18, Franklin County, OH**



**Chief complaint classifier category includes fever and cough OR chief complaint classifier category includes fever and chief complaint text includes sore throat OR chief complaint classifier category includes "IL"

Figure 4: Percentage of Local Reporting and National Laboratory Positive Influenza Tests by Week, 2017-18



Columbus & Franklin County Influenza Monitoring Summary – Week 5, 2018 (1/28/2018-2/3/2018)

Figure 5: Franklin County Resident Respiratory ED Visits, 2017-18, Franklin County, OH

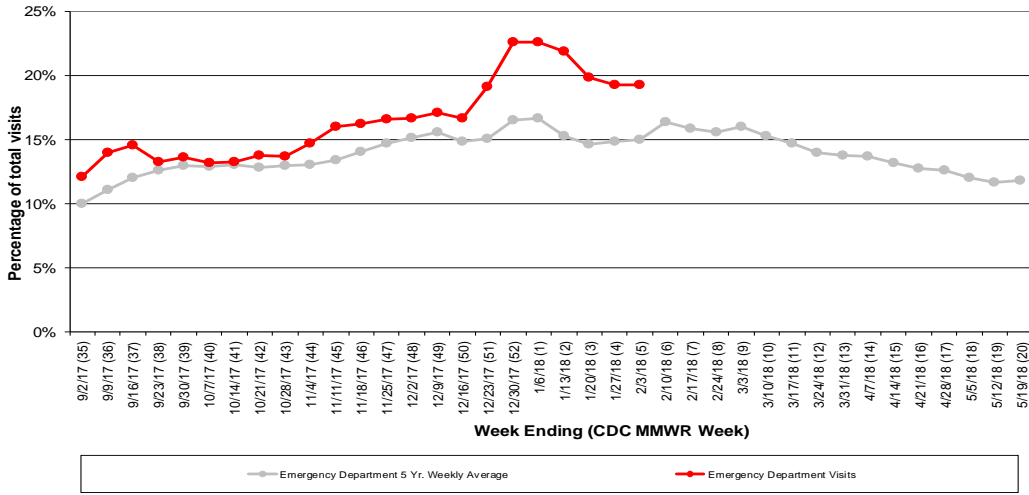


Figure 6: Selected Number of Over-the-Counter Medication Total Sales, 2017-18, Franklin County, OH

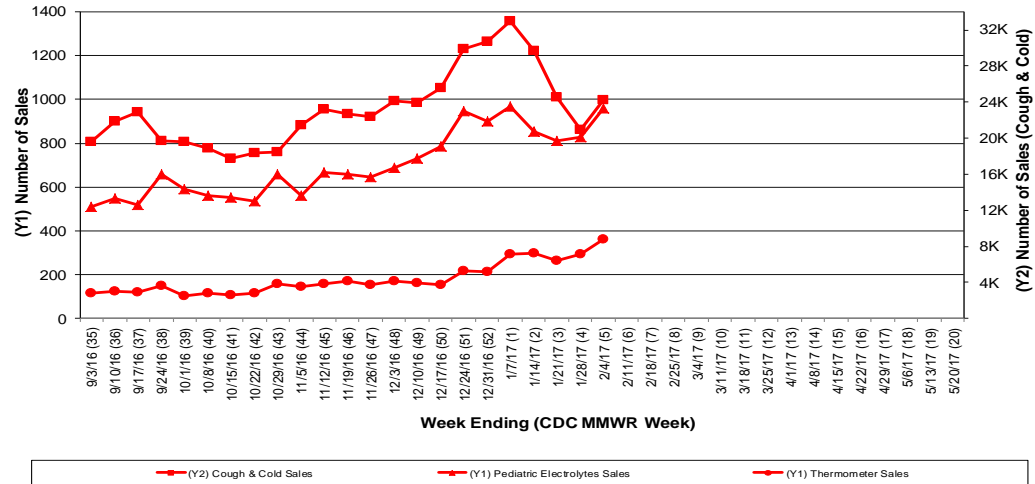
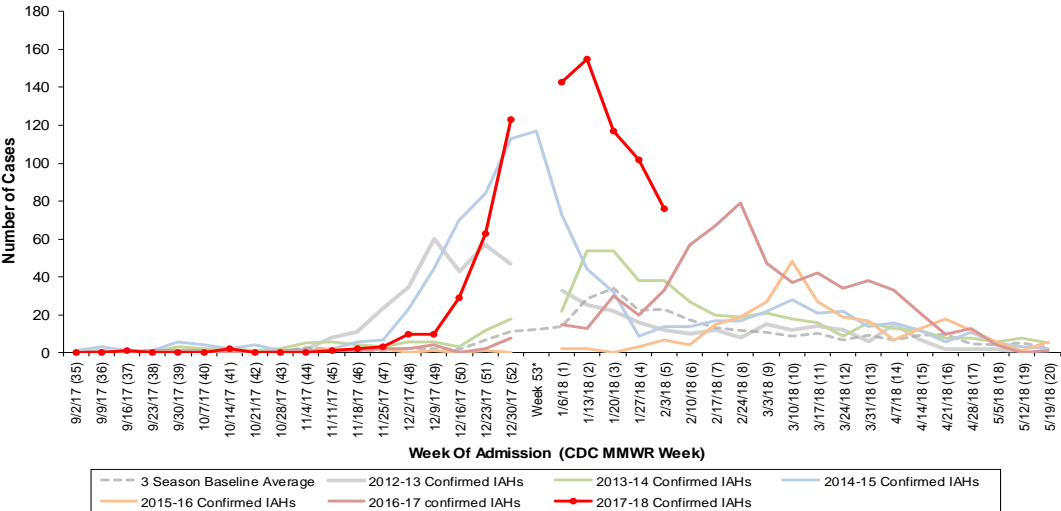


Figure 7: Columbus and Franklin County Jurisdiction Confirmed Influenza Associated Hospitalizations by Hospital Admission Week (As of 2/8/2018)



*Note: Certain years have a 53rd week (e.g., season 2014-15) based on CDC's MMWR Weeks.

Columbus and Franklin County, OH Jurisdiction Confirmed Influenza Hospitalization Cumulative Rates (per 100,000) by Age-Group and Admission Week, 2017-2018 Season

