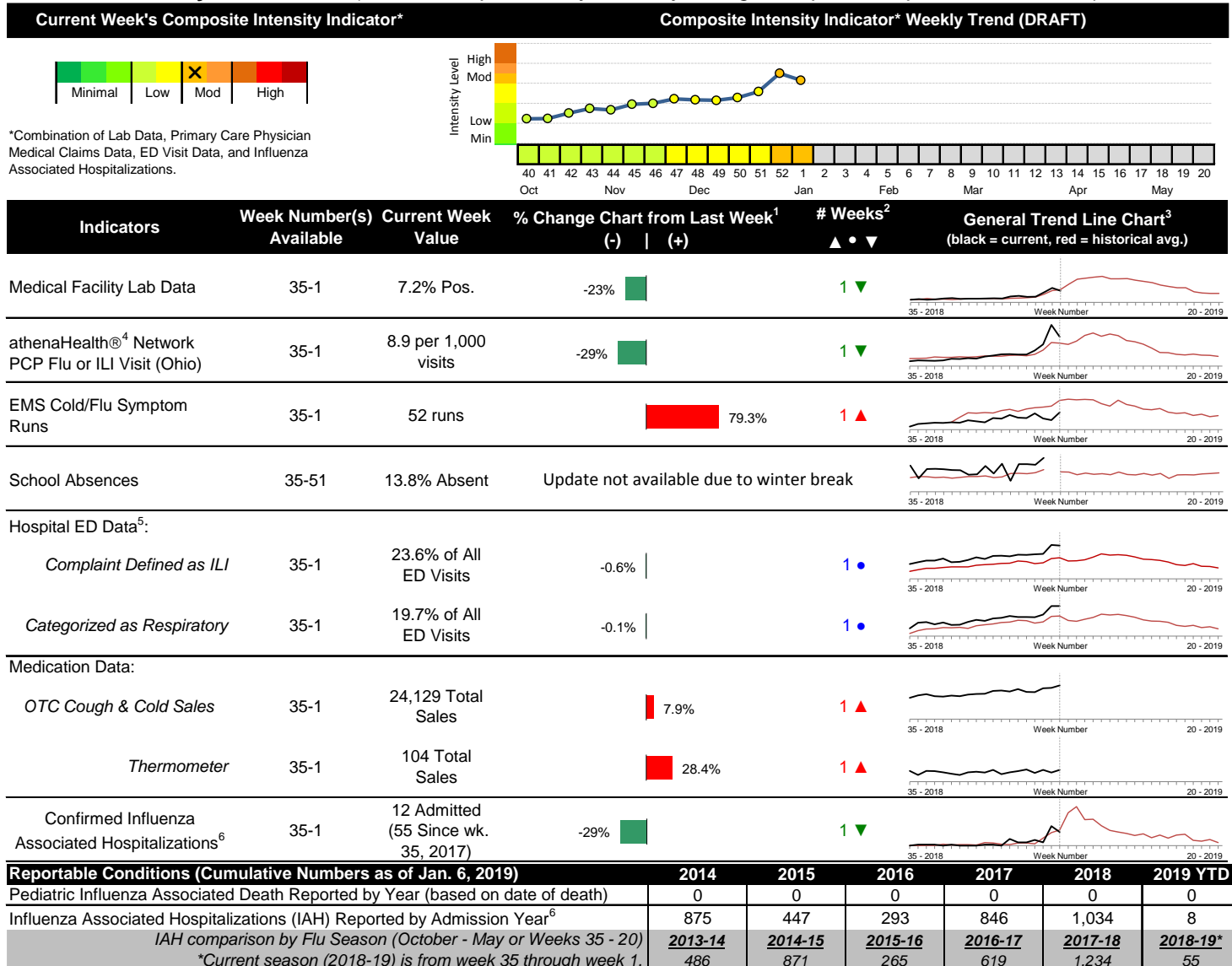


### Highlights

- In week 1 of 2019, the individual local flu activity indicator trends were mixed compared to the previous week. As a whole, flu intensity (composite indicator) decreased compared to the previous week and is moderate.
- Geographic spread and local intensity designation (Click [here](#) for definitions) = WIDESPREAD, MODERATE
- Local medical facility labs reported 2,023 tests run with 145 (7.2%) positive results for week 1 of 2019.
- The percentage of ED visits for both influenza-like-illness (ILI) and respiratory symptoms were stable compared to last week.
- In week 1 of 2019, the majority of trends for local over-the-counter medication category sales tracked increased (increase in cough and cold, electrolyte, thermometer, chest rub, adult anti-fever, and throat lozenge sales; decrease in pediatric anti-fever sales) compared to last week.
- In the U.S., influenza activity remains elevated. Please [visit the CDC website for specific information](#).

### Local Flu Activity Dashboard (All data are preliminary and may change as updated reports are received.)



<sup>1</sup>Interpret with caution. Indicators with small numbers subject to large weekly percentage fluctuations.  
<sup>2</sup>Number of weeks "▲" = Increase (>2%), "▼" = Decrease (>2%), "•" = Stable (-2% to +2%).  
<sup>3</sup>Black line is current years data. Based on data availability, red line is historical average (excluding pandemic year).  
<sup>4</sup>Data Source: Medical claims data from athenaHealth® (www.athenahealth.com). Rate of Flu or ILI visits to Ohio (statewide) athenaHealth® network primary care practices/physicians. Claims data are subject to filing and processing time lags. Historical data are updated when they are received.  
<sup>5</sup>Franklin County, OH residents only (based on zipcode). NOTE: Excludes one hospital system included in the past due to technical changes affecting visit classification assignment and numbers.  
<sup>6</sup>Confirmed cases only. Based on jurisdiction equal to Franklin County or City of Columbus and admission date available in ODRS.

## **Influenza Morbidity and Influenza-Like Illness (ILI) Reports**

In week 1, the preliminary Ohio<sup>1</sup> (statewide) influenza and influenza-like-illness (ILI) visit rate to athenaHealth® providers (8.9 per 1,000 visits) decreased compared to the previous week and is above its baseline average for the week (Figure 1). The week 1 percentage of all Emergency Department (ED) visits categorized as ILI was stable compared to the previous week (Figure 3) and is above its historic baseline for the week.

Nationally, during week 1 of 2019, 3.5% of patient visits reported through ILINet were due to influenza-like illness (ILI). The percentage is above the national baseline of 2.2% for week one.

## **Laboratory Surveillance**

During week 1 of 2019, reporting Franklin County sentinel medical facility laboratories tested 2,023 specimens, with 145 (7.2%) positive (Figure 4). The total number of tests done by local reporting labs from week 35 of 2018 through week 1 of 2019 is 21,162 with 660 (3.1%) positives (565 type A, 93 type B, 0 type A and B, 2 type unknown).

Nationally in week 1 of 2019, clinical laboratories reported 35,059 specimens tested for influenza viruses, 4,460 (12.7%) of which were positive (4,347 type A, 113 type B). Public health laboratories reported testing 833 specimens, 444 of which were positive (440 type A – of which 322 were A(H1N1)pdm09, 68 were H3N2, and 50 were not subtyped; 4 type B – of which 0 were Yamagata lineage, 2 were Victoria lineage, and 2 where lineage was not performed). Please visit the CDC website for more information, including cumulative data.

In week 1 of 2019, Ohio clinical labs reported 26,973 specimens tested for influenza this season thus far. Positive results include: (54) A(H1N1)pdm09; (31) A/H3N2; (1,437) Flu A Not Subtyped, and (33) Flu B (through 1/5/2019). In week 1 of 2019, ODH Public Health Lab reported 101 positive influenza tests from specimens sent by various submitters this season so far. Positive results include: (78) A(H1N1)pdm09; (22) A/H3N2; (1) Influenza B (through 1/5/2019). Please visit the ODH website for more information.

## **ED Respiratory Visits**

In the 1<sup>st</sup> week of 2019, the percentage of all ED visits categorized as respiratory was stable compared to the percentage seen the previous week and is above its baseline for the week (Figure 5).

## **Over-the-Counter (OTC) Medication Sales**

In week 1 of 2019, the majority of trends for local over-the-counter medication category sales tracked increased (increase in cough and cold, electrolyte, thermometer, chest rub, adult anti-fever, and throat lozenge sales; decrease in pediatric anti-fever sales) compared to last week.

## **Additional Influenza Activity Web Links:**

Ohio Seasonal Flu Surveillance: <https://odh.ohio.gov>

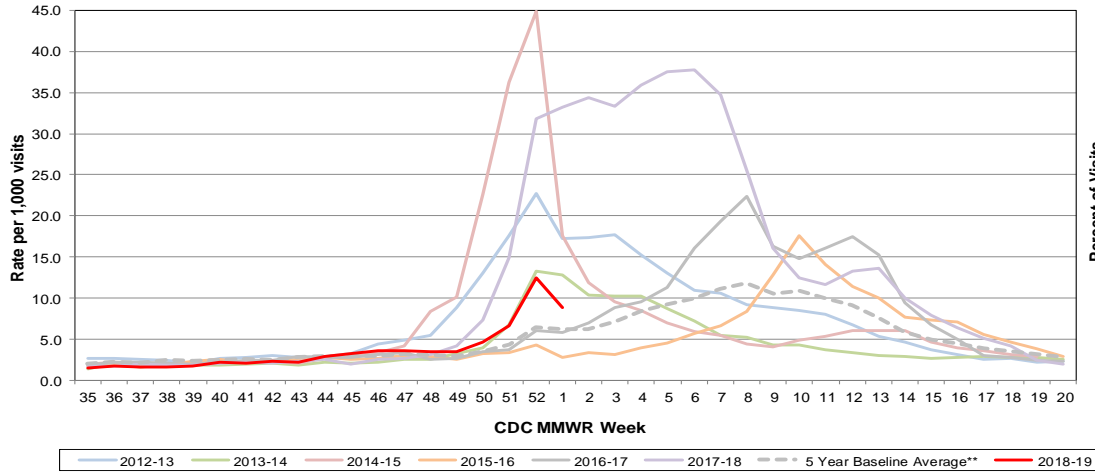
CDC National Seasonal Flu Surveillance Reports: <http://www.cdc.gov/flu/weekly/>

World Health Organization Situation Updates: [http://www.who.int/influenza/surveillance\\_monitoring/en/](http://www.who.int/influenza/surveillance_monitoring/en/)

<sup>1</sup>Note: County level athenaHealth® network primary care medical claims data is no longer available.

# Columbus & Franklin County Influenza Monitoring Summary – Week 1, 2019 (12/30/2018-1/5/2019)

**Figure 1: Ohio Outpatient Primary Care Provider Influenza or Influenza-Like-Illness Visit Rate\***

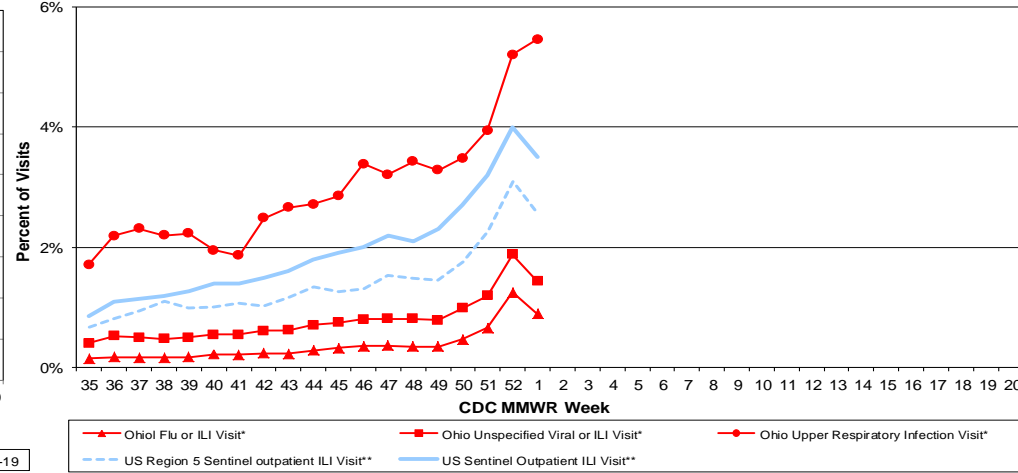


\*Source: Ohio (Statewide) medical claims data from athenaHealth®

\*\*Seasons: 2010-11, 2011-12, 2013-14, 2015-16, 2016-17

Note: athenaHealth® claims data are subject to filing and processing time lags. Historical data are updated when they are received.

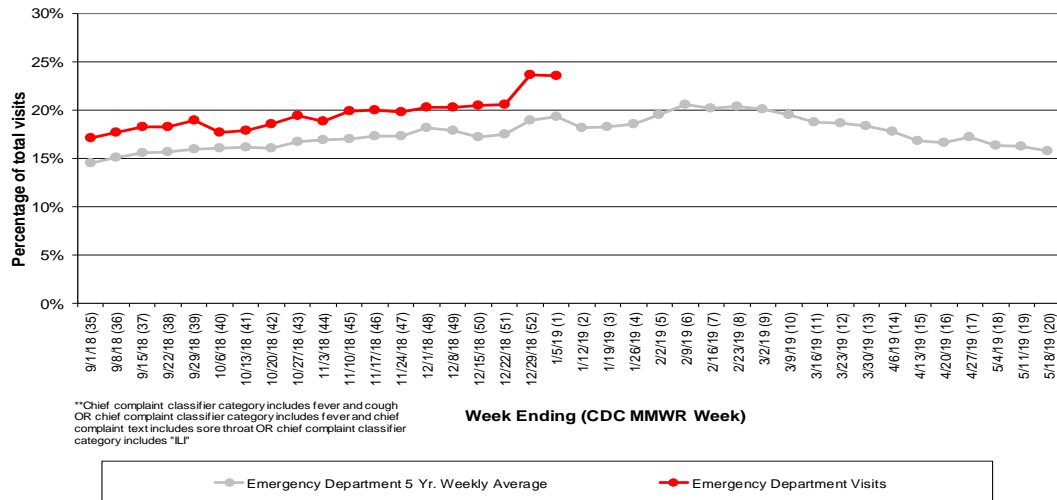
**Figure 2: Percentage of Ohio Outpatient Participating Provider\* and CDC National Outpatient Sentinel Health Care Provider\*\* visits for ILI and Associated Illnesses, 2018-19**



\*Source: Ohio (statewide) medical claims data provided by athenaHealth®. Data are subject to filing and processing time lags. Historical data are updated when received.

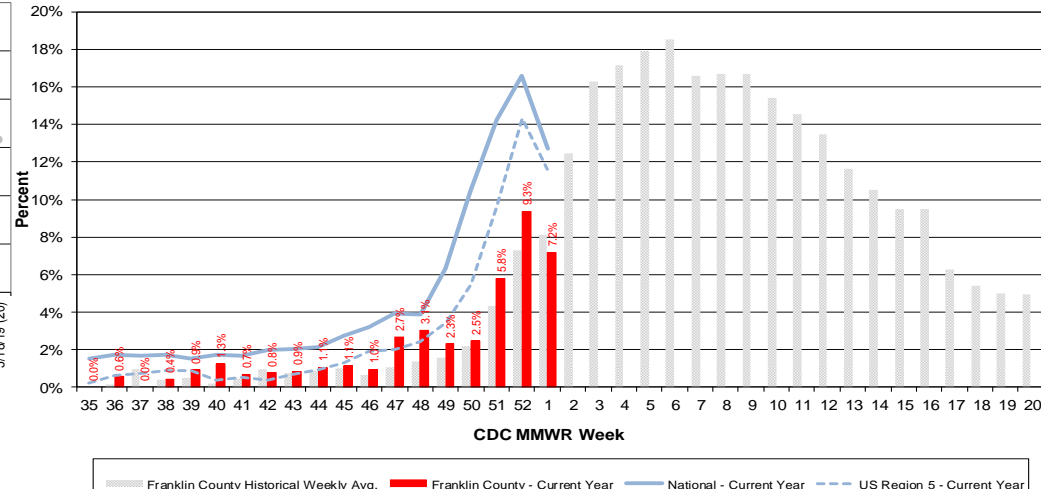
\*\*Source: U.S. Outpatient Influenza-like Illness Surveillance Network (ILINet) sentinel provider visits.

**Figure 3: Franklin County Resident ILI Defined\*\* ED Visits, 2018-19, Franklin County, OH**



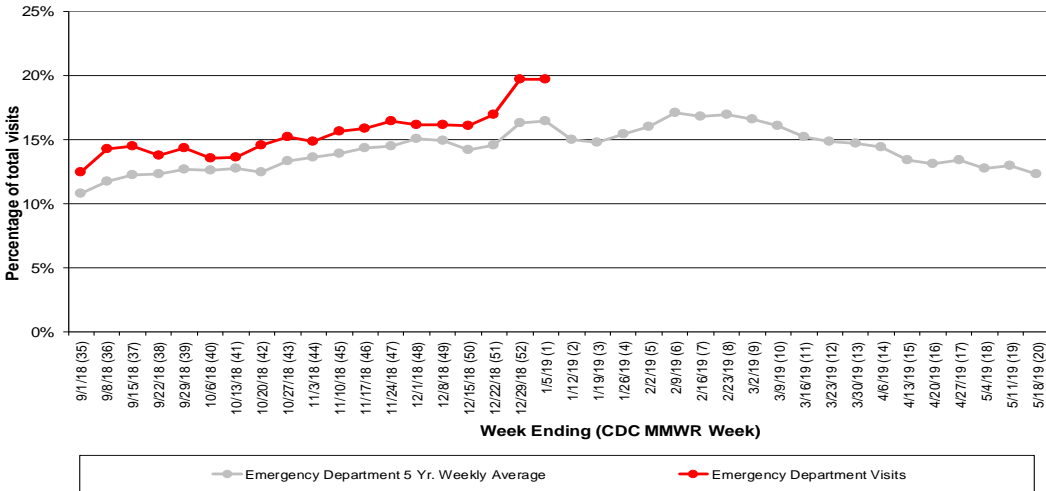
\*\*Chief complaint classifier category includes fever and cough OR chief complaint classifier category includes fever and chief complaint text includes sore throat OR chief complaint classifier category includes "ILI"

**Figure 4: Percentage of Local Reporting and National Laboratory Positive Influenza Tests by Week, 2018-19**

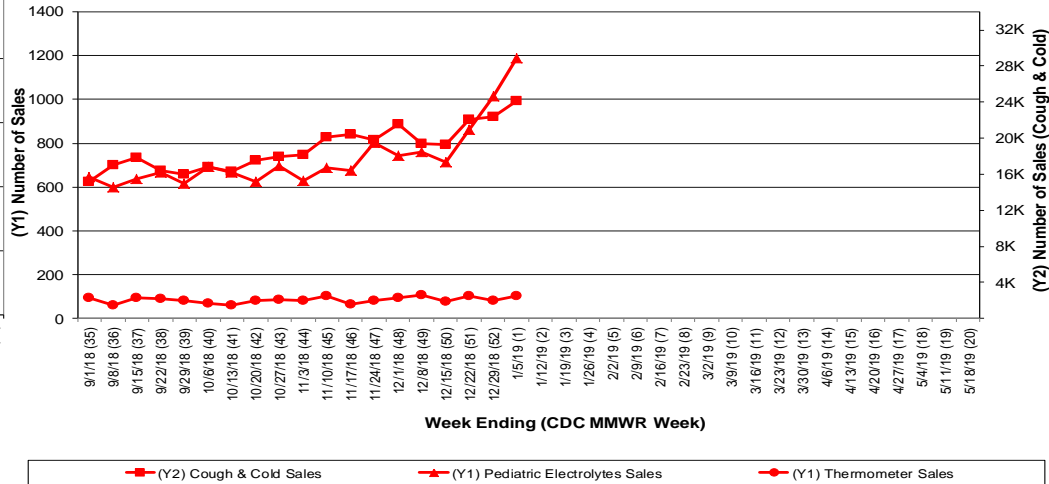


## Columbus & Franklin County Influenza Monitoring Summary – Week 1, 2019 (12/30/2018-1/5/2019)

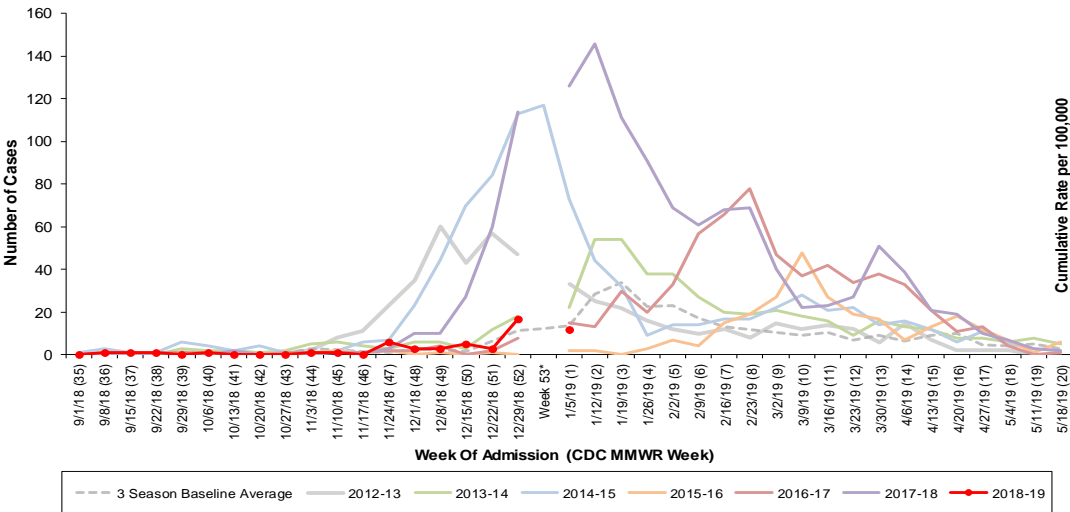
**Figure 5: Franklin County Resident Respiratory ED Visits, 2018-19, Franklin County, OH**



**Figure 6: Selected Number of Over-the-Counter Medication Total Sales, 2018-19, Franklin County, OH**



**Figure 7: Columbus and Franklin County Jurisdiction Confirmed Influenza Associated Hospitalizations by Hospital Admission Week (As of 1/6/2019)**



\*Note: Certain years have a 53rd week (e.g., season 2014-15) based on CDC's MMWR Weeks.

**Columbus and Franklin County, OH Jurisdiction Confirmed Influenza Hospitalization Cumulative Rates (per 100,000) by Age-Group and Admission Week, 2018-2019 Season**

