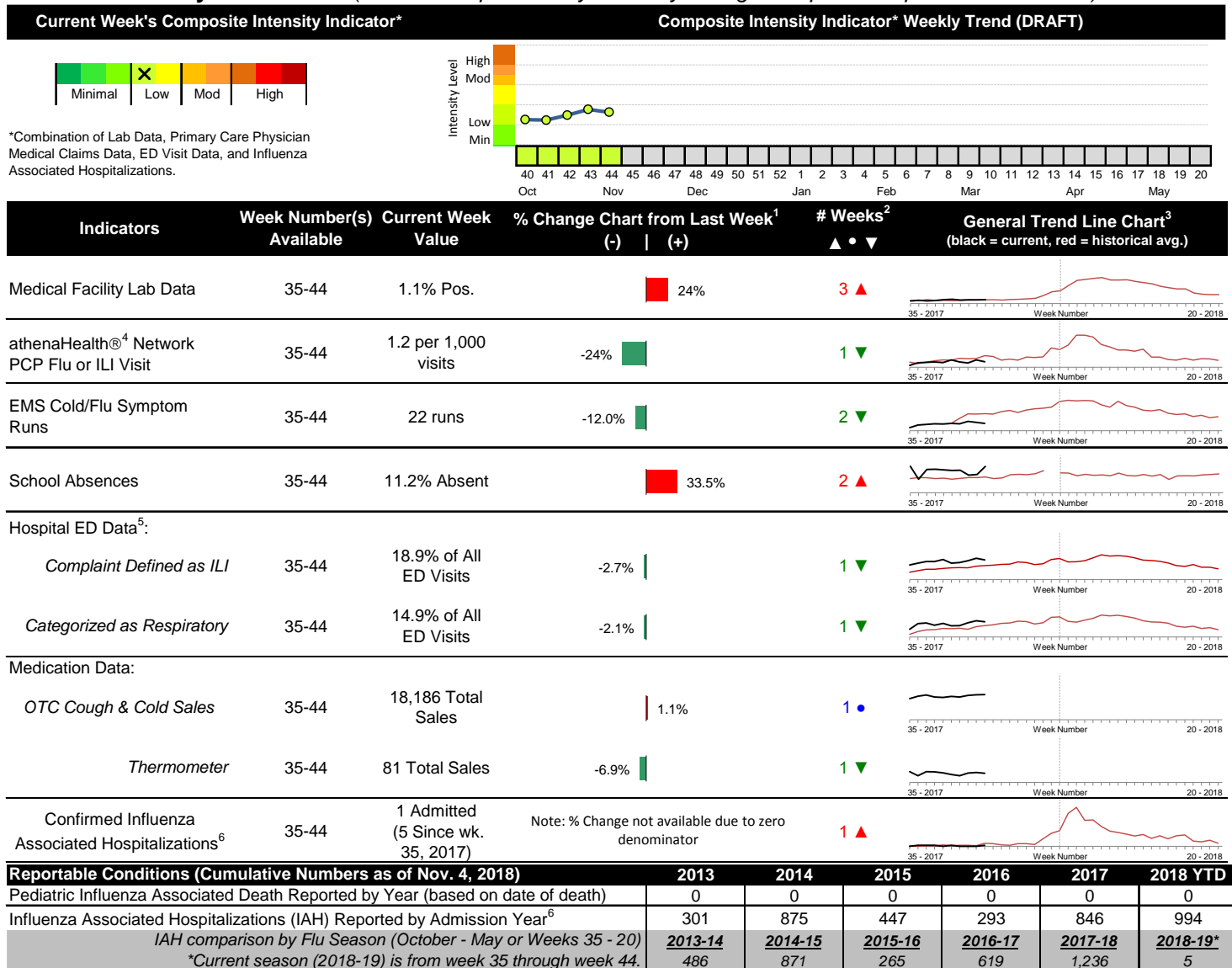


2018-2019 Columbus & Franklin County Seasonal Influenza Activity Weekly Summary (Week 44, Oct. 28th, 2018– Nov. 3rd, 2018)

Highlights

- In week 44 of 2018, the individual local flu activity indicator trends were mixed compared to last week. As a whole, flu intensity (composite indicator) decreased slightly and continues to be low.
- Geographic spread and local intensity designation (Click [here](#) for definitions) = SPORADIC, LOW
- Local medical facility labs reported 1,216 tests run with 13 (1.1%) positive results for week 44 of 2018.
- The percentage of ED visits for both influenza-like-illness (ILI) and respiratory symptoms decreased slightly compared to last week.
- In week 44 of 2018, trends for local over-the-counter medication category sales tracked were mixed compared to last week (decrease in electrolyte and thermometer sales; increase in chest rub, adult anti-fever sales, pediatric anti-fever, and throat lozenge sales; stable cough and cold sales) compared to last week.
- Nationally, influenza activity remains low, although small increases in activity were reported. Please [visit the CDC website for specific information](#).

Local Flu Activity Dashboard *(All data are preliminary and may change as updated reports are received.)*



¹Interpret with caution. Indicators with small numbers subject to large weekly percentage fluctuations.

²Number of weeks "▲" = Increase (>2%), "▼" = Decrease (>2%), "●" = Stable (-2% to +2%).

³Black line is current years data. Based on data availability, red line is historical average (excluding pandemic year).

⁴Data Source: Medical claims data from athenaHealth[®] (www.athenahealth.com). Rate of Flu or ILI visits to Franklin County, OH athenaHealth[®] network primary care practices/physicians. Claims data are subject to filing and processing time lags. Historical data are updated when they are received.

⁵Franklin County, OH residents only (based on zipcode). NOTE: Excludes one hospital system included in the past due to technical changes affecting visit classification assignment and numbers.

⁶Confirmed cases only. Based on jurisdiction equal to Franklin County or City of Columbus and admission date available in ODRS.

Influenza Morbidity and Influenza-Like Illness (ILI) Reports

In week 44, the preliminary local influenza and influenza-like-illness (ILI) visit rate to athenaHealth® providers (1.2 per 1,000 visits) decreased compared to the previous week and is below its baseline average for the week (Figure 1). The week 44 percentage of all Emergency Department (ED) visits categorized as ILI decreased slightly compared to the previous week (Figure 3) and is above its historic baseline for the week.

Nationally, during week 44 of 2018, 1.8% of patient visits reported through ILINet were due to influenza-like illness (ILI). The percentage is below the national baseline of 2.2% for week 44.

Laboratory Surveillance

During week 44 of 2018, reporting Franklin County sentinel medical facility laboratories tested 1,216 specimens, with 13 (1.1%) positive (Figure 4). The total number of tests done by local reporting labs from week 35 of 2018 through week 44 of 2018 is 7,210 with 57 (0.79%) positives (27 type A, 30 type B, 0 type A and B, 0 type unknown).

Nationally in week 44 of 2018, clinical laboratories reported 17,264 specimens tested for influenza viruses, 155 (0.9%) of which were positive (115 type A, 40 type B). Public health laboratories reported testing 356 specimens, 46 of which were positive (42 type A – of which 32 were A(H1N1)pdm09, 4 were H3N2, and 6 were not subtyped; 4 type B – of which 2 were Yamagata lineage, 0 was Victoria lineage, and 2 where lineage was not performed). Please visit the CDC website for more information, including cumulative data.

In week 44, Ohio clinical labs reported 3,459 specimens tested for influenza this season thus far. Positive results include: (2) A(H1N1)pdm09; (0) A/H3N2; (16) Flu A Not Subtyped, and (9) Flu B (through 11/3/2018). In week 44, ODH Public Health Lab reported 8 positive influenza tests from specimens sent by various submitters this season so far. Positive results include: (7) A(H1N1)pdm09; (0) A/H3N2; (1) Influenza B (through 11/3/2018). Please visit the ODH website for more information.

ED Respiratory Visits

In the 44th week of 2018, the percentage of all ED visits categorized as respiratory increased slightly compared to the percentage seen the previous week and is above its baseline for the week (Figure 5).

Over-the-Counter (OTC) Medication Sales

In week 44 of 2018, trends for local over-the-counter medication category sales tracked were mixed (decrease in electrolyte and thermometer sales; increase in chest rub, adult anti-fever sales, pediatric anti-fever, and throat lozenge sales; stable cough and cold sales) compared to last week.

Additional Influenza Activity Web Links:

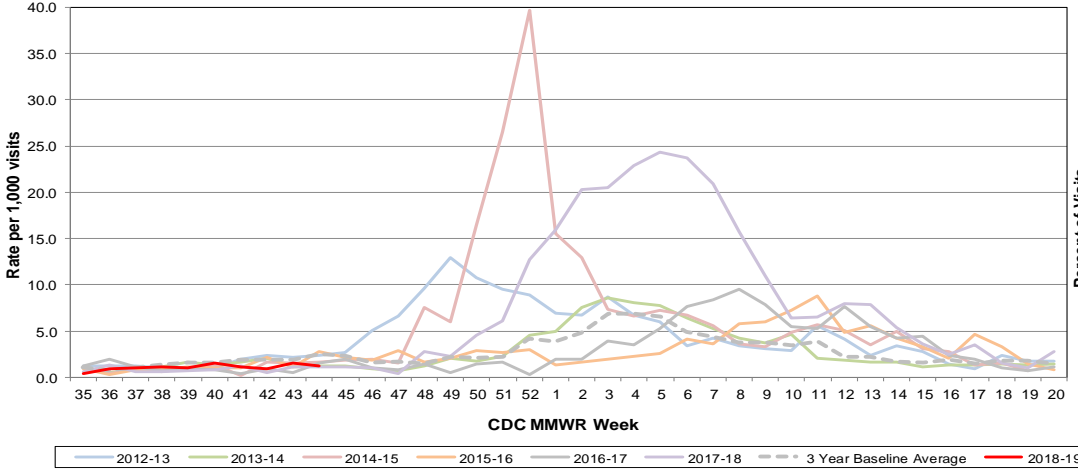
Ohio Seasonal Flu Surveillance: <http://www.odh.ohio.gov/seasflu/Ohio%20Flu%20Activity.aspx>

CDC National Seasonal Flu Surveillance Reports: <http://www.cdc.gov/flu/weekly/>

World Health Organization Situation Updates: http://www.who.int/influenza/surveillance_monitoring/en/

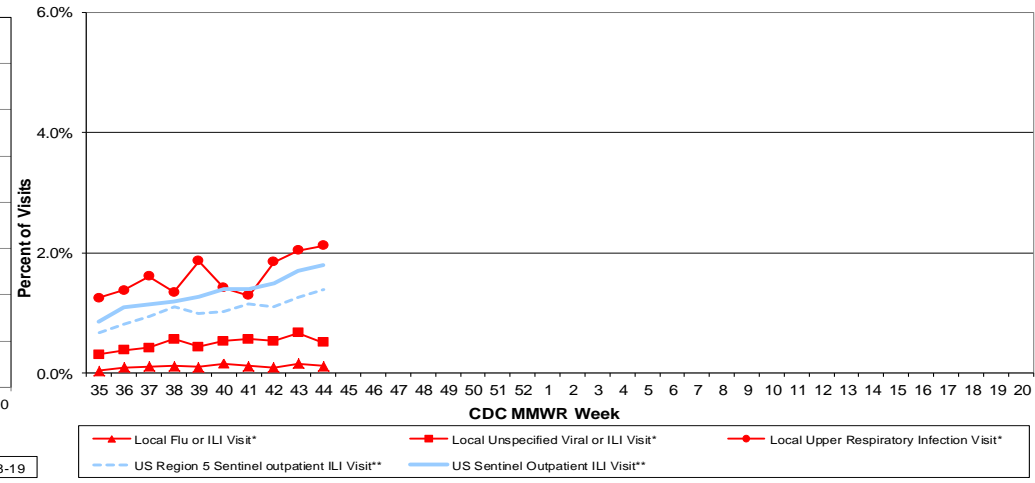
Columbus & Franklin County Influenza Monitoring Summary – Week 44, 2018 (10/28/2018-11/3/2018)

Figure 1: Local Participating Outpatient Primary Care Provider Influenza or Influenza-Like Illness Visit Rate*, Franklin County, OH



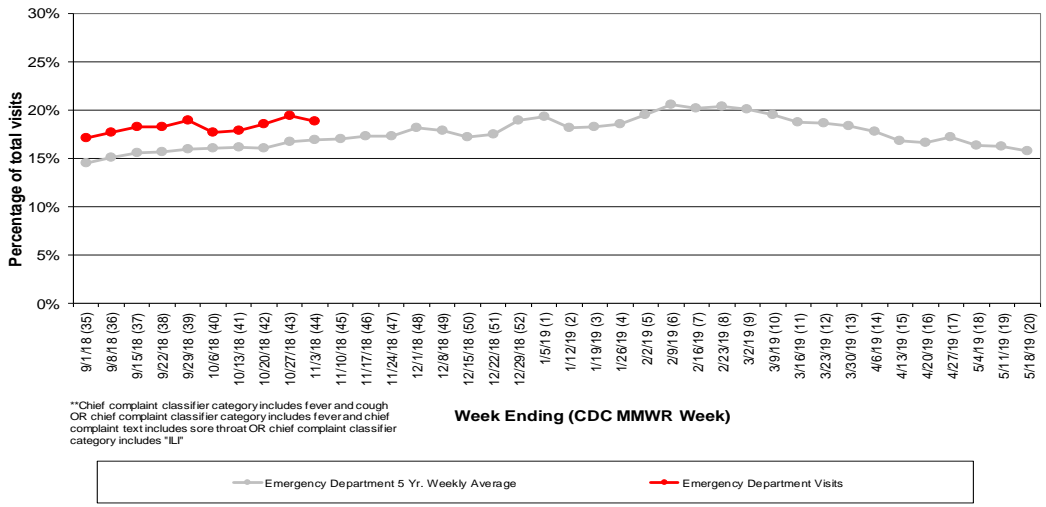
*Source: Medical Claims data from athenaHealth®
 Note: athenaHealth® claims data are subject to filing and processing time lags. Historical data are updated when they are received.

Figure 2: Percentage of Local Outpatient Participating Provider* visits for ILI and Associated Illnesses, 2018-19



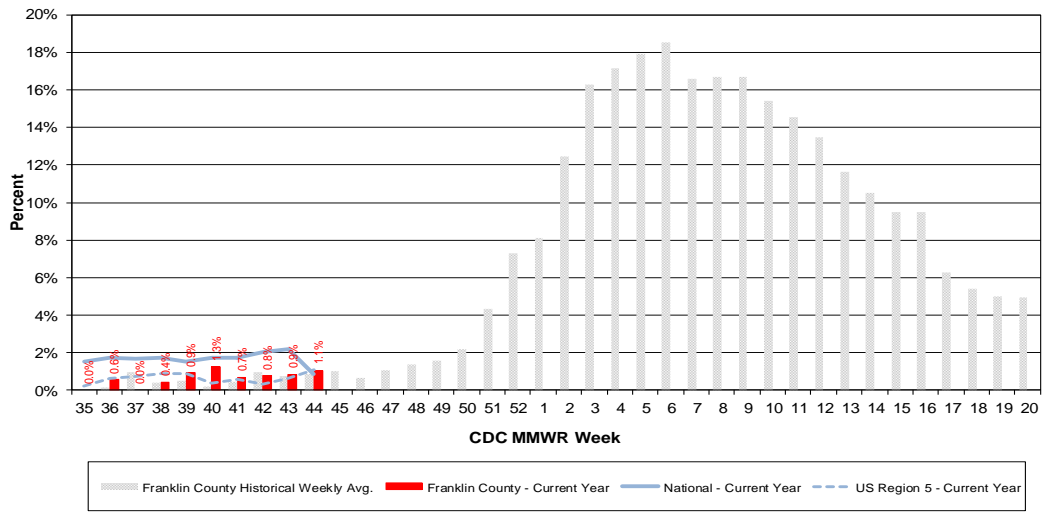
*Source: Local medical claims data provided by athenaHealth®. Data are subject to filing and processing time lags. Historical data are updated when received.

Figure 3: Franklin County Resident ILI Defined ED Visits, 2018-19, Franklin County, OH**



**Chief complaint classifier category includes fever and cough OR chief complaint classifier category includes fever and chief complaint text includes sore throat OR chief complaint classifier category includes "ILI"

Figure 4: Percentage of Local Reporting and National Laboratory Positive Influenza Tests by Week, 2018-19



Columbus & Franklin County Influenza Monitoring Summary – Week 44, 2018 (10/28/2018-11/3/2018)

Figure 5: Franklin County Resident Respiratory ED Visits, 2018-19, Franklin County, OH

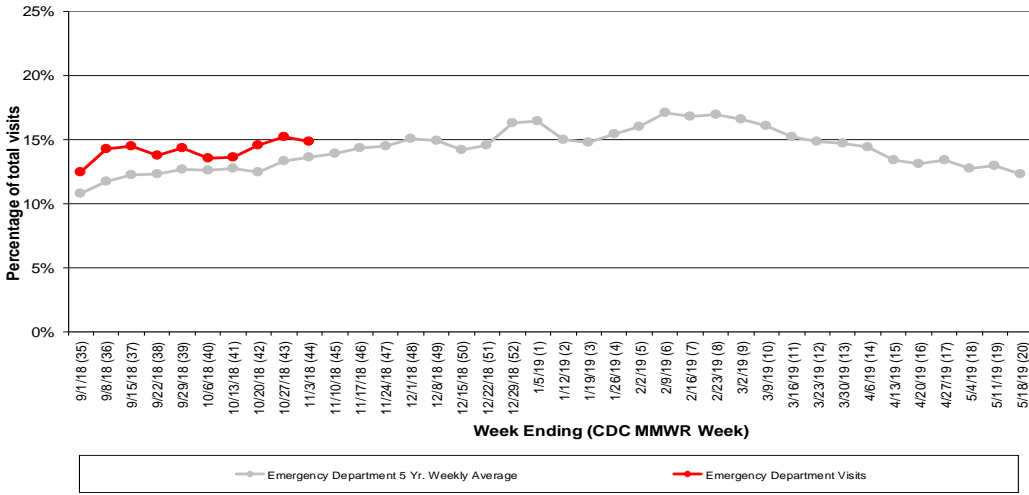


Figure 6: Selected Number of Over-the-Counter Medication Total Sales, 2018-19, Franklin County, OH

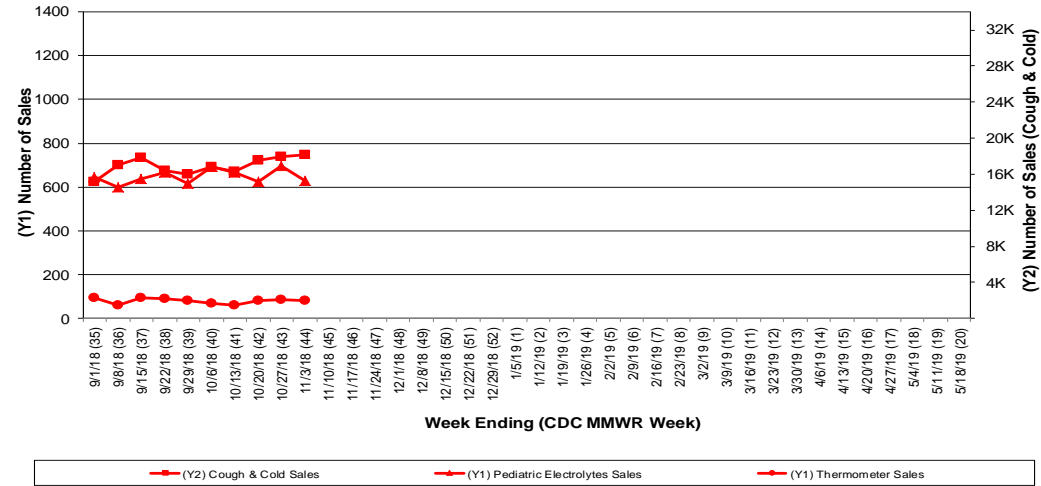
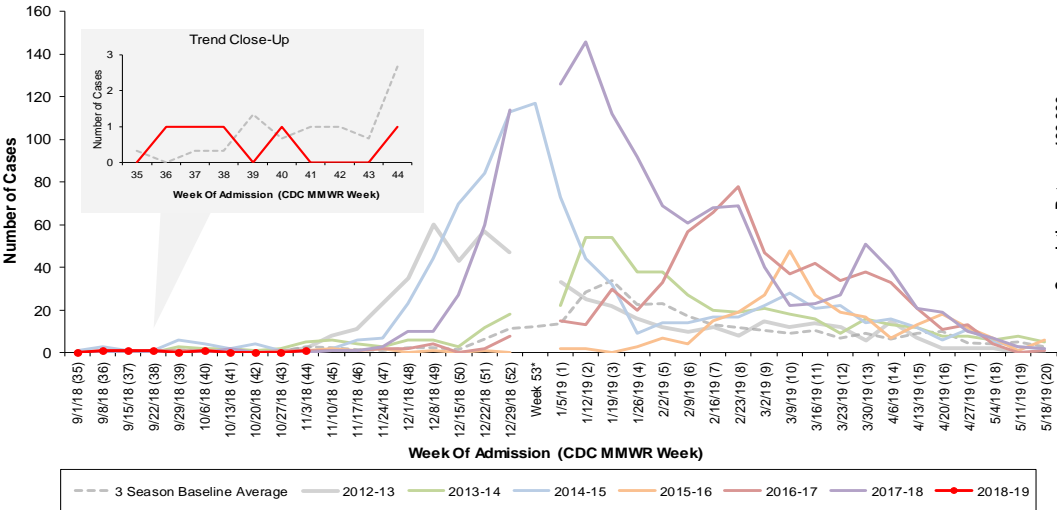
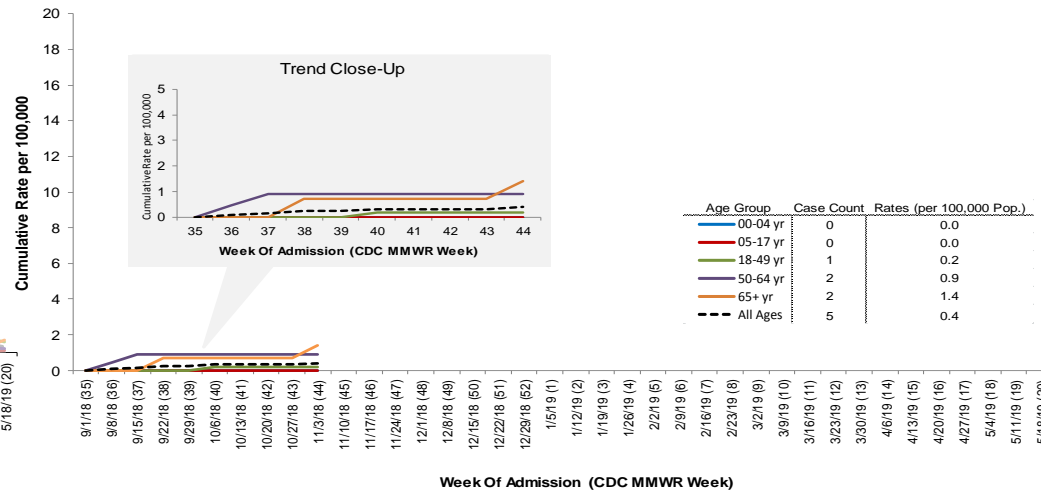


Figure 7: Columbus and Franklin County Jurisdiction Confirmed Influenza Associated Hospitalizations by Hospital Admission Week (As of 11/4/2018)



Columbus and Franklin County, OH Jurisdiction Confirmed Influenza Hospitalization Cumulative Rates (per 100,000) by Age-Group and Admission Week, 2018-2019 Season



*Note: Certain years have a 53rd week (e.g., season 2014-15) based on CDCs MMWR Weeks.