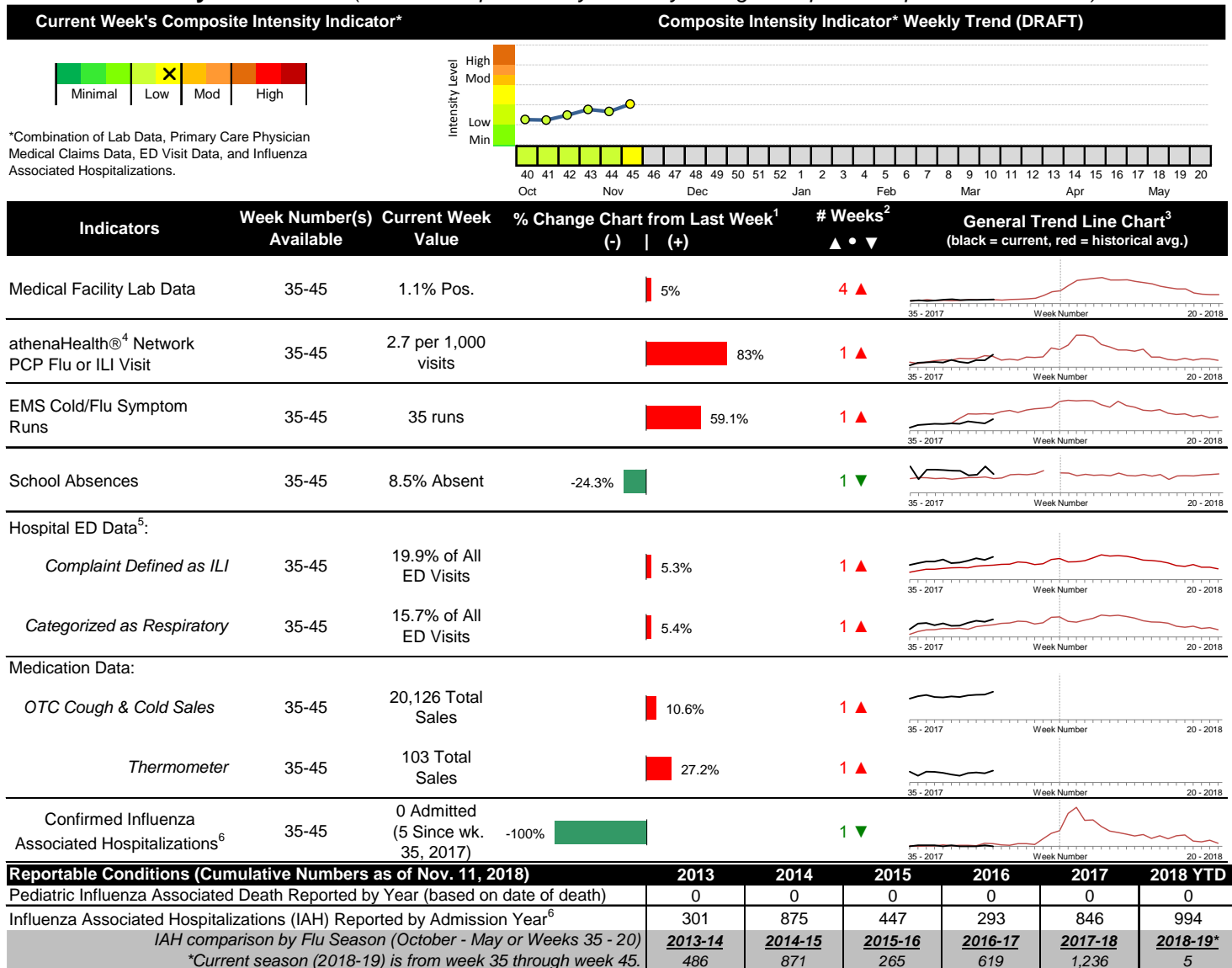


## 2018-2019 Columbus & Franklin County Seasonal Influenza Activity Weekly Summary (Week 45, Nov. 4<sup>th</sup>, 2018– Nov. 10<sup>th</sup>, 2018)

### Highlights

- In week 45 of 2018, the individual local flu activity indicator trends generally increased compared to last week. As a whole, flu intensity (composite indicator) increased and continues to be low.
- Geographic spread and local intensity designation (Click [here](#) for definitions) = SPORADIC, LOW
- Local medical facility labs reported 1,246 tests run with 14 (1.1%) positive results for week 45 of 2018.
- The percentage of ED visits for both influenza-like-illness (ILI) and respiratory symptoms increased slightly compared to last week.
- In week 45 of 2018, trends for local over-the-counter medication category sales tracked generally increased compared to last week (decrease in pediatric anti-fever sales; increase in cough and cold, electrolyte, thermometer, chest rub, adult anti-fever, and throat lozenge sales) compared to last week.
- Nationally, influenza activity remains low, although small increases in activity were reported. Please [visit the CDC website for specific information](#).

### Local Flu Activity Dashboard *(All data are preliminary and may change as updated reports are received.)*



<sup>1</sup>Interpret with caution. Indicators with small numbers subject to large weekly percentage fluctuations.

<sup>2</sup>Number of weeks "▲" = Increase (>2%), "▼" = Decrease (>2%), "●" = Stable (-2% to +2%).

<sup>3</sup>Black line is current years data. Based on data availability, red line is historical average (excluding pandemic year).

<sup>4</sup>Data Source: Medical claims data from athenaHealth® (www.athenahealth.com). Rate of Flu or ILI visits to Franklin County, OH athenaHealth® network primary care practices/physicians. Claims data are subject to filing and processing time lags. Historical data are updated when they are received.

<sup>5</sup>Franklin County, OH residents only (based on zipcode). NOTE: Excludes one hospital system included in the past due to technical changes affecting visit classification assignment and numbers.

<sup>6</sup>Confirmed cases only. Based on jurisdiction equal to Franklin County or City of Columbus and admission date available in ODRS.

## **Influenza Morbidity and Influenza-Like Illness (ILI) Reports**

In week 45, the preliminary local influenza and influenza-like-illness (ILI) visit rate to athenaHealth® providers (2.7 per 1,000 visits) increased compared to the previous week and is slightly above its baseline average for the week (Figure 1). The week 45 percentage of all Emergency Department (ED) visits categorized as ILI increased slightly compared to the previous week (Figure 3) and is above its historic baseline for the week.

Nationally, during week 45 of 2018, 1.9% of patient visits reported through ILINet were due to influenza-like illness (ILI). The percentage is below the national baseline of 2.2% for week 45.

## **Laboratory Surveillance**

During week 45 of 2018, reporting Franklin County sentinel medical facility laboratories tested 1,246 specimens, with 14 (1.1%) positive (Figure 4). The total number of tests done by local reporting labs from week 35 of 2018 through week 45 of 2018 is 8,456 with 71 (0.84%) positives (34 type A, 37 type B, 0 type A and B, 0 type unknown).

Nationally in week 45 of 2018, clinical laboratories reported 16,335 specimens tested for influenza viruses, 189 (1.2%) of which were positive (152 type A, 37 type B). Public health laboratories reported testing 620 specimens, 94 of which were positive (84 type A – of which 57 were A(H1N1)pdm09, 6 were H3N2, and 21 were not subtyped; 10 type B – of which 4 were Yamagata lineage, 3 was Victoria lineage, and 3 where lineage was not performed). Please visit the CDC website for more information, including cumulative data.

In week 45, Ohio clinical labs reported 8,572 specimens tested for influenza this season thus far. Positive results include: (2) A(H1N1)pdm09; (0) A/H3N2; (28) Flu A Not Subtyped, and (12) Flu B (through 11/10/2018). In week 45, ODH Public Health Lab reported 11 positive influenza tests from specimens sent by various submitters this season so far. Positive results include: (10) A(H1N1)pdm09; (0) A/H3N2; (1) Influenza B (through 11/10/2018). Please visit the ODH website for more information.

## **ED Respiratory Visits**

In the 45<sup>th</sup> week of 2018, the percentage of all ED visits categorized as respiratory increased slightly compared to the percentage seen the previous week and is above its baseline for the week (Figure 5).

## **Over-the-Counter (OTC) Medication Sales**

In week 45 of 2018, trends for local over-the-counter medication category sales tracked generally increased compared to last week (decrease in pediatric anti-fever sales; increase in cough and cold, electrolyte, thermometer, chest rub, adult anti-fever, and throat lozenge sales) compared to last week.

## **Additional Influenza Activity Web Links:**

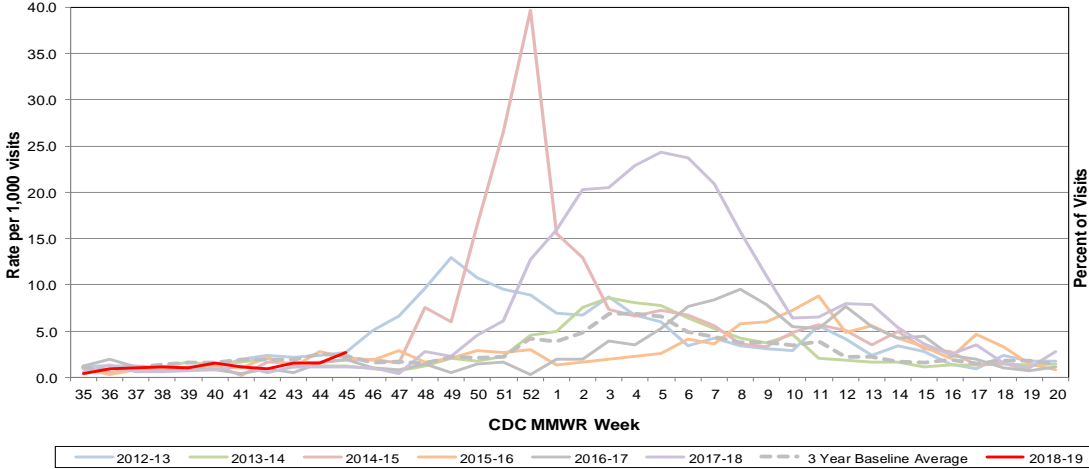
Ohio Seasonal Flu Surveillance: <http://www.odh.ohio.gov/seasflu/Ohio%20Flu%20Activity.aspx>

CDC National Seasonal Flu Surveillance Reports: <http://www.cdc.gov/flu/weekly/>

World Health Organization Situation Updates: [http://www.who.int/influenza/surveillance\\_monitoring/en/](http://www.who.int/influenza/surveillance_monitoring/en/)

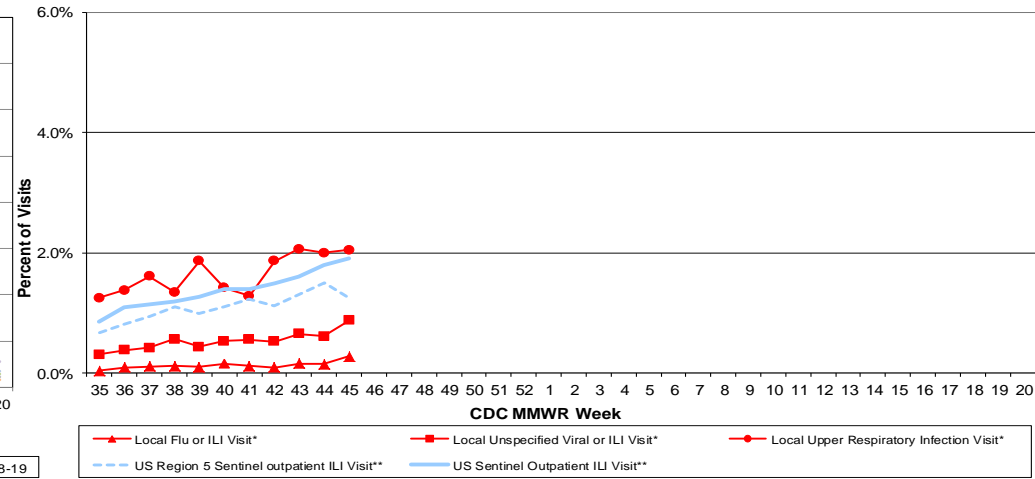
# Columbus & Franklin County Influenza Monitoring Summary – Week 45, 2018 (11/4/2018-11/10/2018)

**Figure 1: Local Participating Outpatient Primary Care Provider Influenza or Influenza-Like Illness Visit Rate\*, Franklin County, OH**



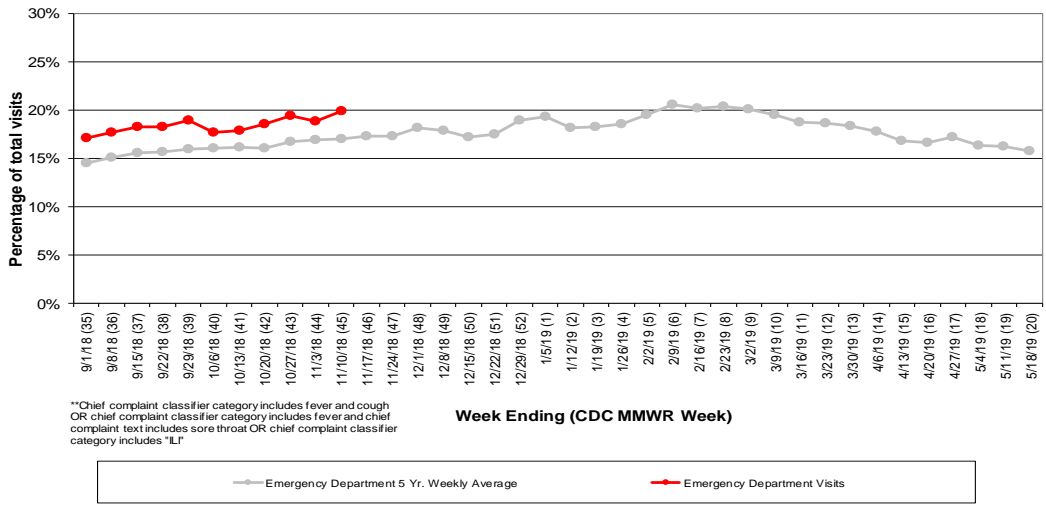
\*Source: Medical Claims data from athenaHealth®  
 Note: athenaHealth® claims data are subject to filing and processing time lags. Historical data are updated when they are received.

**Figure 2: Percentage of Local Outpatient Participating Provider\* visits for ILI and Associated Illnesses, 2018-19**



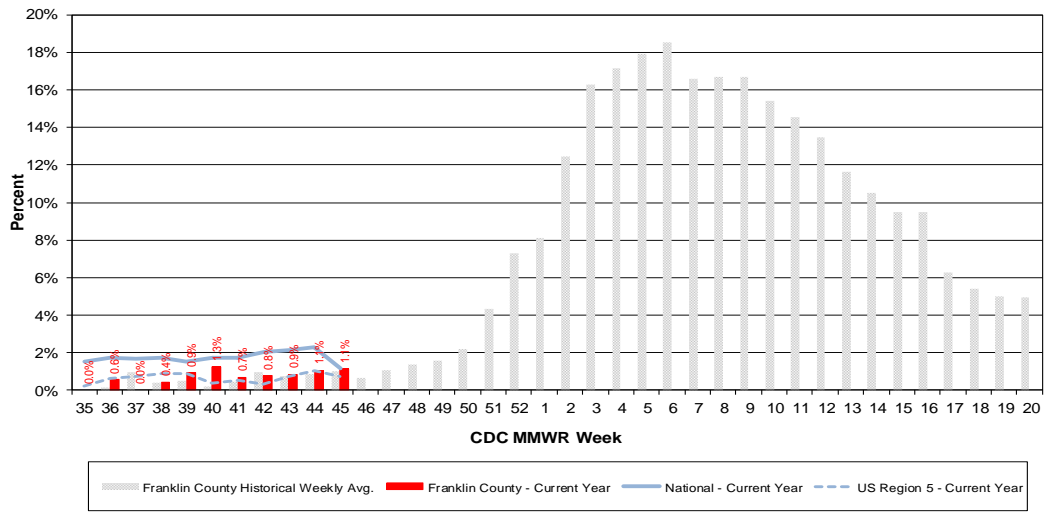
\*Source: Local medical claims data provided by athenaHealth®. Data are subject to filing and processing time lags. Historical data are updated when received.

**Figure 3: Franklin County Resident ILI Defined\*\* ED Visits, 2018-19, Franklin County, OH**



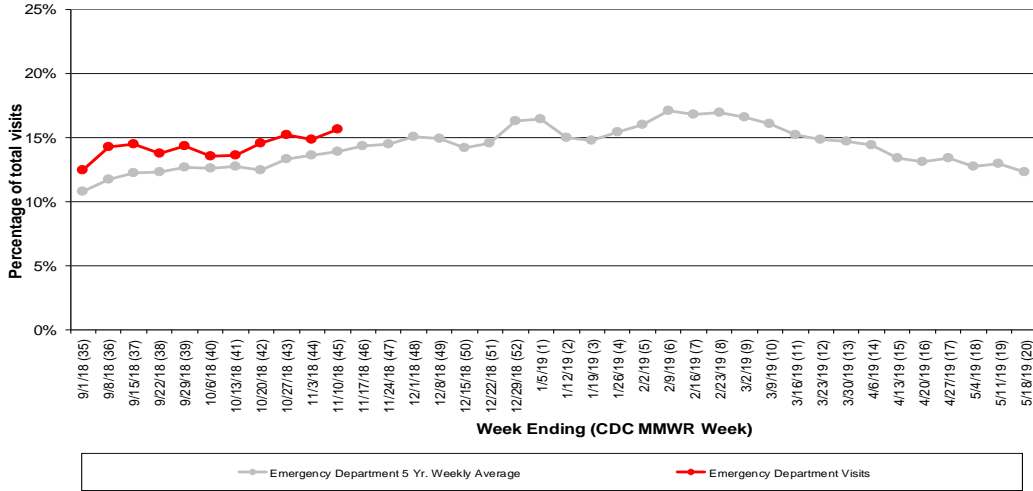
\*\*Chief complaint classifier category includes fever and cough OR chief complaint classifier category includes fever and chief complaint text includes sore throat OR chief complaint classifier category includes \*LI

**Figure 4: Percentage of Local Reporting and National Laboratory Positive Influenza Tests by Week, 2018-19**

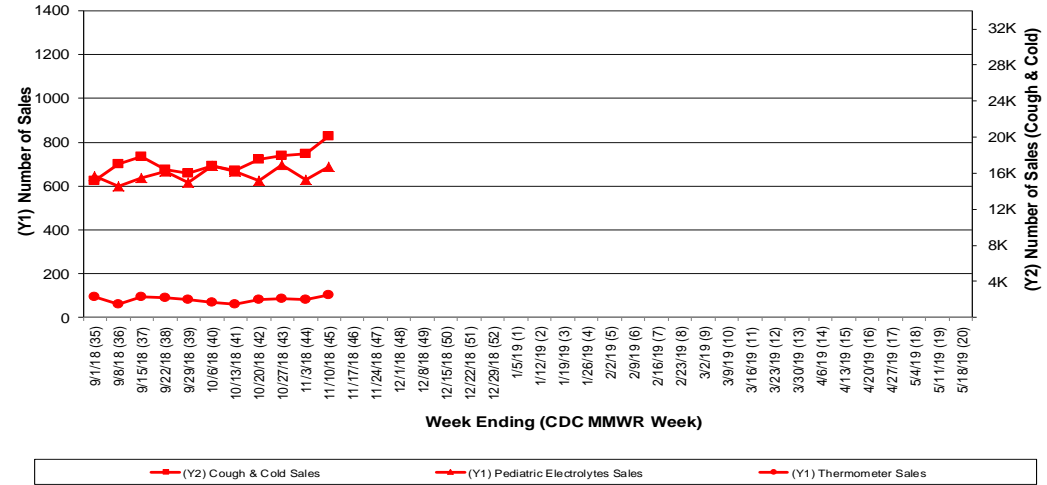


## Columbus & Franklin County Influenza Monitoring Summary – Week 45, 2018 (11/4/2018-11/10/2018)

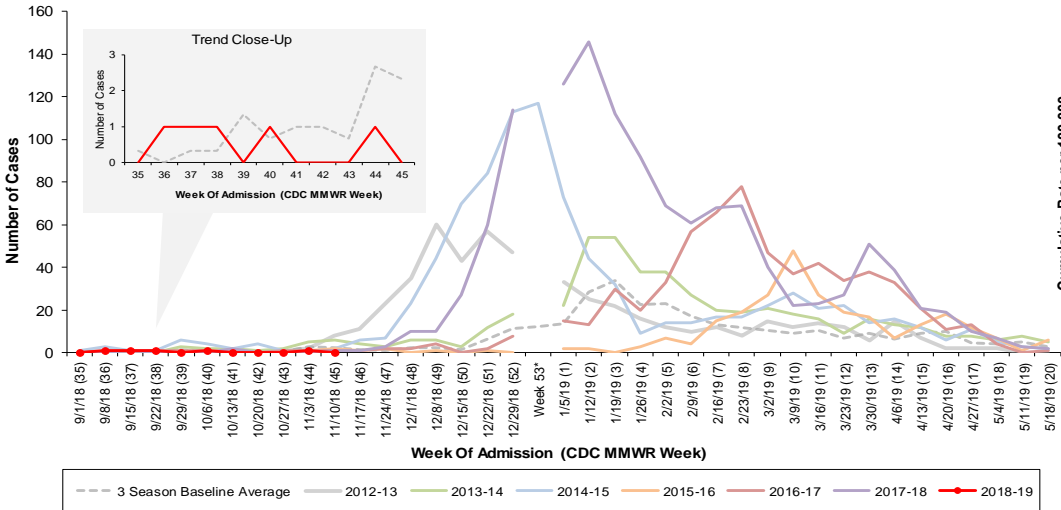
**Figure 5: Franklin County Resident Respiratory ED Visits, 2018-19, Franklin County, OH**



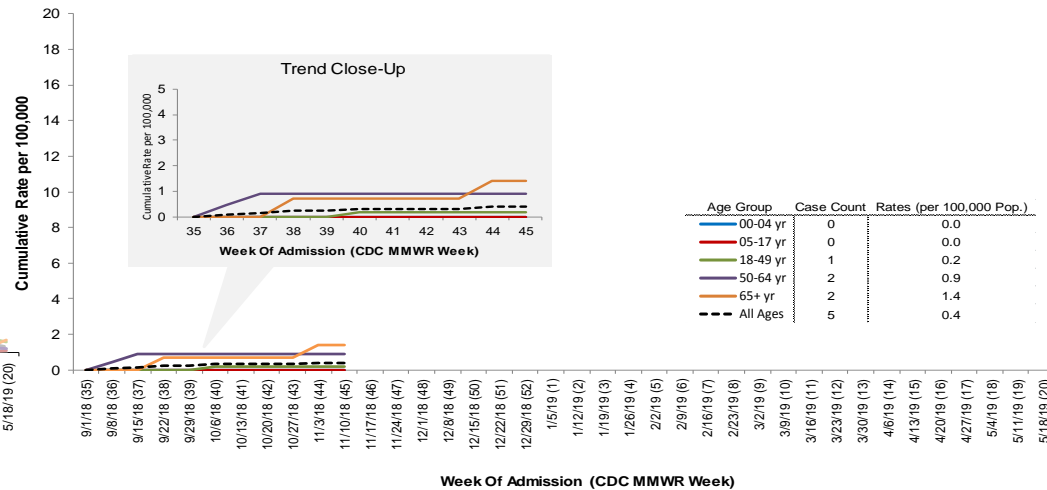
**Figure 6: Selected Number of Over-the-Counter Medication Total Sales, 2018-19, Franklin County, OH**



**Figure 7: Columbus and Franklin County Jurisdiction Confirmed Influenza Associated Hospitalizations by Hospital Admission Week (As of 11/11/2018)**



**Columbus and Franklin County, OH Jurisdiction Confirmed Influenza Hospitalization Cumulative Rates (per 100,000) by Age-Group and Admission Week, 2018-2019 Season**



\*Note: Certain years have a 53rd week (e.g., season 2014-15) based on CDCs MMWR Weeks.