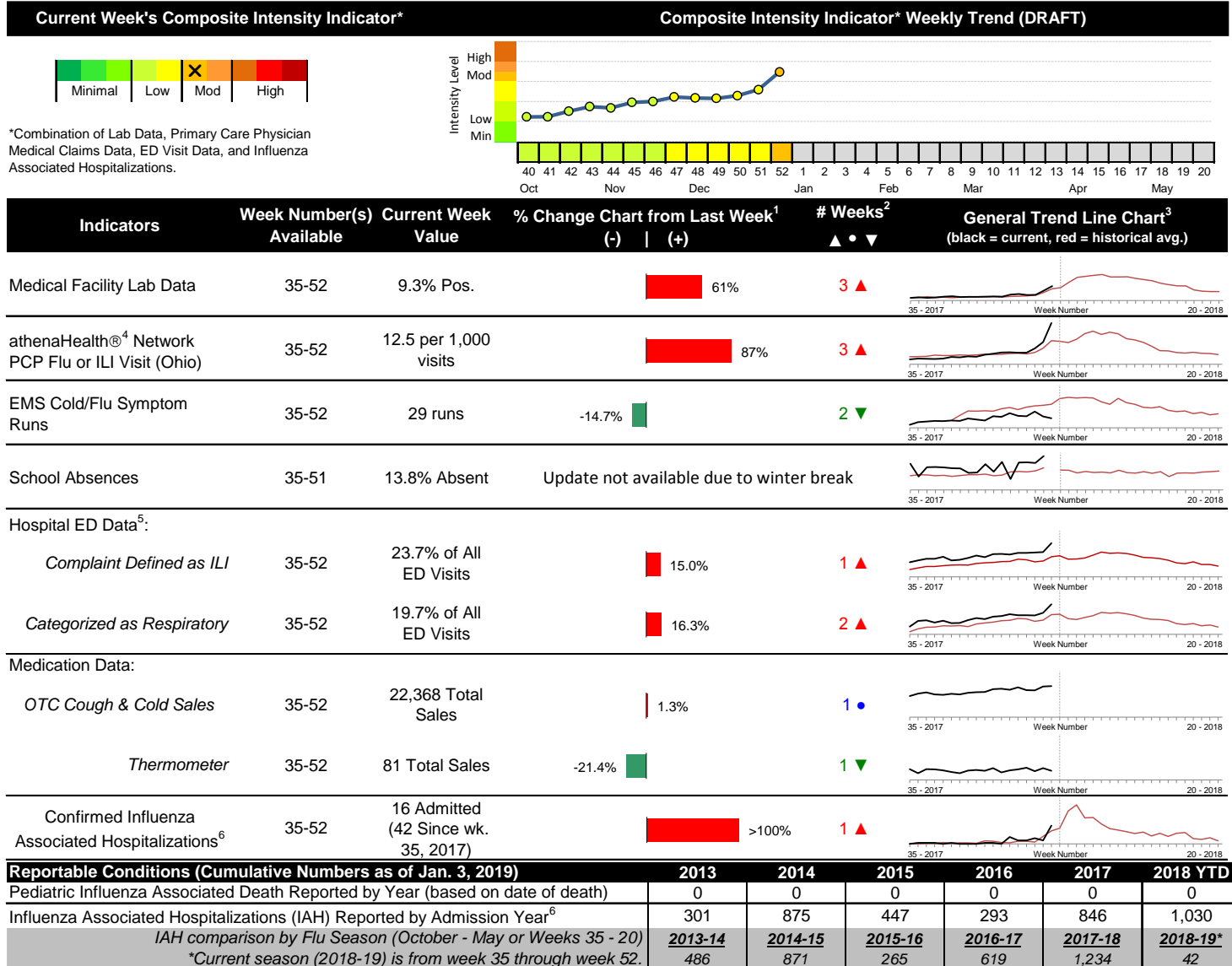


# 2018-2019 Columbus & Franklin County Seasonal Influenza Activity Weekly Summary (Week 52, Dec. 23<sup>rd</sup>, 2018– Dec. 29<sup>th</sup>, 2018)

## Highlights

- In week 52 of 2018, the majority of key individual local flu activity indicator trends increased compared to the previous week. As a whole, flu intensity (composite indicator) increased compared to the previous week and is moderate.
- Geographic spread and local intensity designation (Click [here](#) for definitions) = WIDESPREAD, MODERATE
- Local medical facility labs reported 1,948 tests run with 182 (9.3%) positive results for week 52 of 2018.
- The percentage of ED visits for both influenza-like-illness (ILI) and respiratory symptoms increased compared to last week.
- In week 52 of 2018, trends for local over-the-counter medication category sales tracked were mixed compared to last week (increase in electrolyte and chest rub sales; decrease in thermometer, pediatric anti-fever, adult anti-fever, and throat lozenge sales; stable cough and cold sales) compared to last week.
- In the U.S., influenza activity is increasing. Please [visit the CDC website for specific information](#).

## Local Flu Activity Dashboard (All data are preliminary and may change as updated reports are received.)



<sup>1</sup>Interpret with caution. Indicators with small numbers subject to large weekly percentage fluctuations.

<sup>2</sup>Number of weeks "▲" = Increase (>2%), "▼" = Decrease (>2%), "●" = Stable (-2% to +2%).

<sup>3</sup>Black line is current years data. Based on data availability, red line is historical average (excluding pandemic year).

<sup>4</sup>Data Source: Medical claims data from athenaHealth® (www.athenahealth.com). Rate of Flu or ILI visits to Ohio (statewide) athenaHealth® network primary care practices/physicians. Claims data are subject to filing and processing time lags. Historical data are updated when they are received.

<sup>5</sup>Franklin County, OH residents only (based on zipcode). NOTE: Excludes one hospital system included in the past due to technical changes affecting visit classification assignment and numbers.

<sup>6</sup>Confirmed cases only. Based on jurisdiction equal to Franklin County or City of Columbus and admission date available in ODRS.

## **Influenza Morbidity and Influenza-Like Illness (ILI) Reports**

In week 52, the preliminary Ohio<sup>1</sup> (statewide) influenza and influenza-like-illness (ILI) visit rate to athenaHealth® providers (12.5 per 1,000 visits) increased compared to the previous week and is above its baseline average for the week (Figure 1). The week 52 percentage of all Emergency Department (ED) visits categorized as ILI increased compared to the previous week (Figure 3) and is above its historic baseline for the week.

Nationally, during week 52 of 2018, 4.1% of patient visits reported through ILINet were due to influenza-like illness (ILI). The percentage is above the national baseline of 2.2% for week 52.

## **Laboratory Surveillance**

During week 52 of 2018, reporting Franklin County sentinel medical facility laboratories tested 1,948 specimens, with 182 (9.3%) positive (Figure 4). The total number of tests done by local reporting labs from week 35 of 2018 through week 52 of 2018 is 19,139 with 515 (2.7%) positives (433 type A, 80 type B, 0 type A and B, 2 type unknown).

Nationally in week 52 of 2018, clinical laboratories reported 26,603 specimens tested for influenza viruses, 3,636 (13.7%) of which were positive (3,532 type A, 104 type B). Public health laboratories reported testing 856 specimens, 536 of which were positive (522 type A – of which 439 were A(H1N1)pdm09, 52 were H3N2, and 31 were not subtyped; 14 type B – of which 2 were Yamagata lineage, 6 were Victoria lineage, and 6 where lineage was not performed). Please visit the CDC website for more information, including cumulative data.

In week 52, Ohio clinical labs reported 23,994 specimens tested for influenza this season thus far. Positive results include: (39) A(H1N1)pdm09; (26) A/H3N2; (1,068) Flu A Not Subtyped, and (33) Flu B (through 12/29/2018). In week 52, ODH Public Health Lab reported 69 positive influenza tests from specimens sent by various submitters this season so far. Positive results include: (56) A(H1N1)pdm09; (12) A/H3N2; (1) Influenza B (through 12/29/2018). Please visit the ODH website for more information.

## **ED Respiratory Visits**

In the 52<sup>nd</sup> week of 2018, the percentage of all ED visits categorized as respiratory increased compared to the percentage seen the previous week and is above its baseline for the week (Figure 5).

## **Over-the-Counter (OTC) Medication Sales**

In week 52 of 2018, trends for local over-the-counter medication category sales tracked were mixed compared to last week (increase in electrolyte and chest rub sales; decrease in thermometer, pediatric anti-fever, adult anti-fever, and throat lozenge sales; stable cough and cold sales) compared to last week.

## **Additional Influenza Activity Web Links:**

Ohio Seasonal Flu Surveillance: <https://odh.ohio.gov>

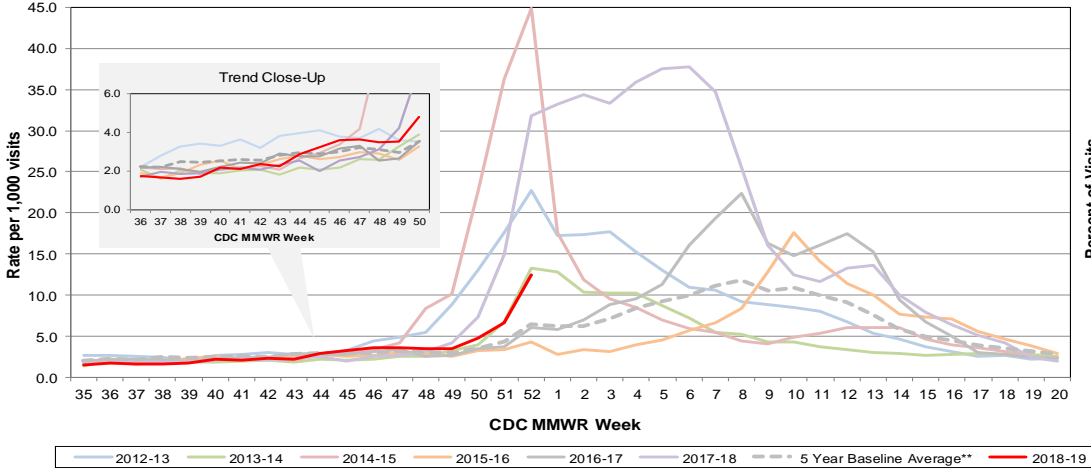
CDC National Seasonal Flu Surveillance Reports: <http://www.cdc.gov/flu/weekly/>

World Health Organization Situation Updates: [http://www.who.int/influenza/surveillance\\_monitoring/en/](http://www.who.int/influenza/surveillance_monitoring/en/)

<sup>1</sup>Note: County level athenaHealth® network primary care medical claims data is no longer available.

Columbus & Franklin County Influenza Monitoring Summary – Week 52, 2018 (12/23/2018-12/29/2018)

Figure 1: Ohio Outpatient Primary Care Provider Influenza or Influenza-Like-Illness Visit Rate\*

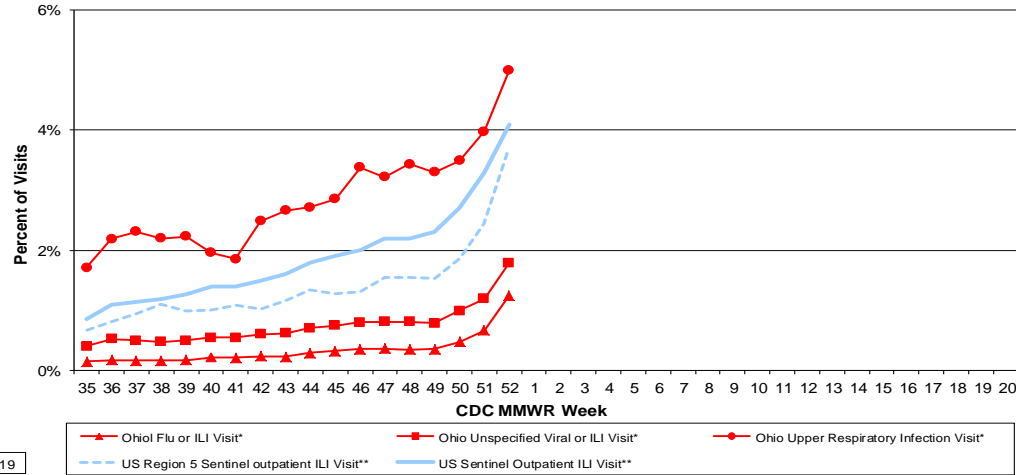


\*Source: Ohio (Statewide) medical claims data from athenaHealth®

\*\*Seasons: 2010-11, 2011-12, 2013-14, 2015-16, 2016-17

Note: athenaHealth® claims data are subject to filing and processing time lags. Historical data are updated when they are received.

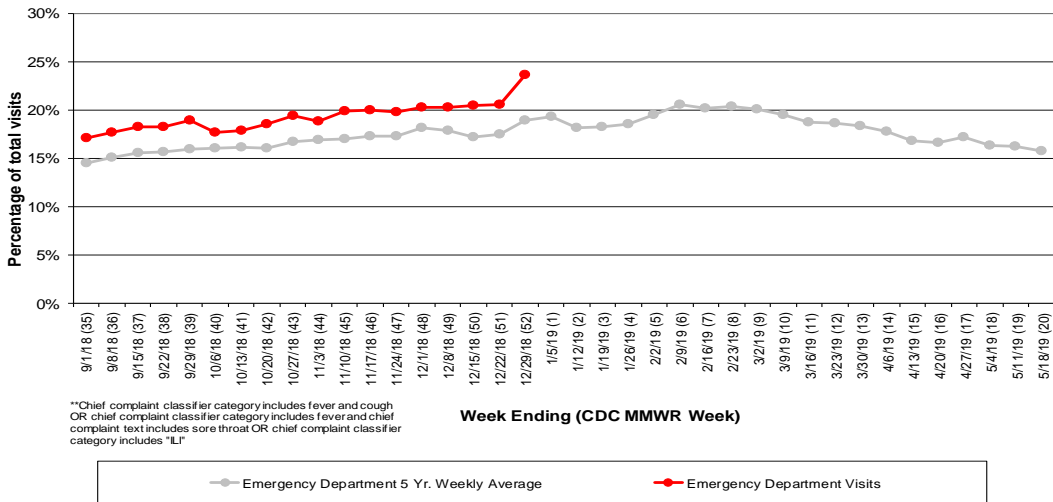
Figure 2: Percentage of Ohio Outpatient Participating Provider\* and CDC National Outpatient Sentinel Health Care Provider\*\* visits for ILI and Associated Illnesses, 2018-19



\*Source: Ohio (statewide) medical claims data provided by athenaHealth®. Data are subject to filing and processing time lags. Historical data are updated when received.

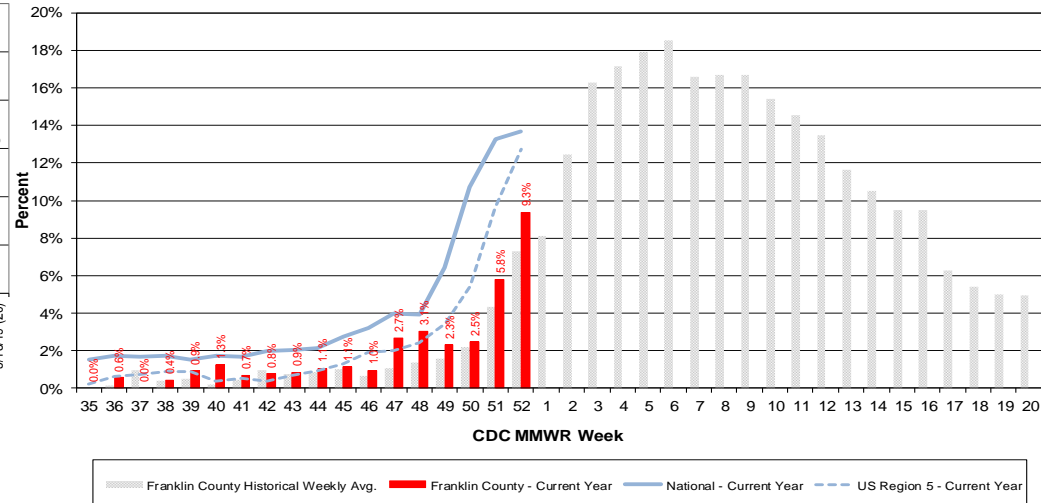
\*\*Source: U.S. Outpatient Influenza-like Illness Surveillance Network (ILINet) sentinel provider visits.

Figure 3: Franklin County Resident ILI Defined\*\* ED Visits, 2018-19, Franklin County, OH



\*\*Chief complaint classifier category includes fever and cough OR chief complaint classifier category includes fever and chief complaint text includes sore throat OR chief complaint classifier category includes "LI"

Figure 4: Percentage of Local Reporting and National Laboratory Positive Influenza Tests by Week, 2018-19



Columbus & Franklin County Influenza Monitoring Summary – Week 52, 2018 (12/23/2018-12/29/2018)

Figure 5: Franklin County Resident Respiratory ED Visits, 2018-19, Franklin County, OH

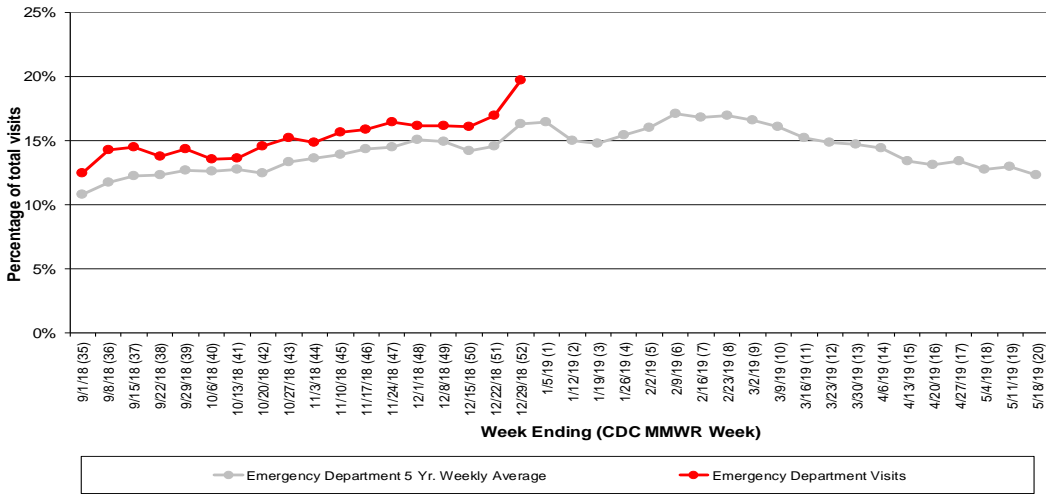


Figure 6: Selected Number of Over-the-Counter Medication Total Sales, 2018-19, Franklin County, OH

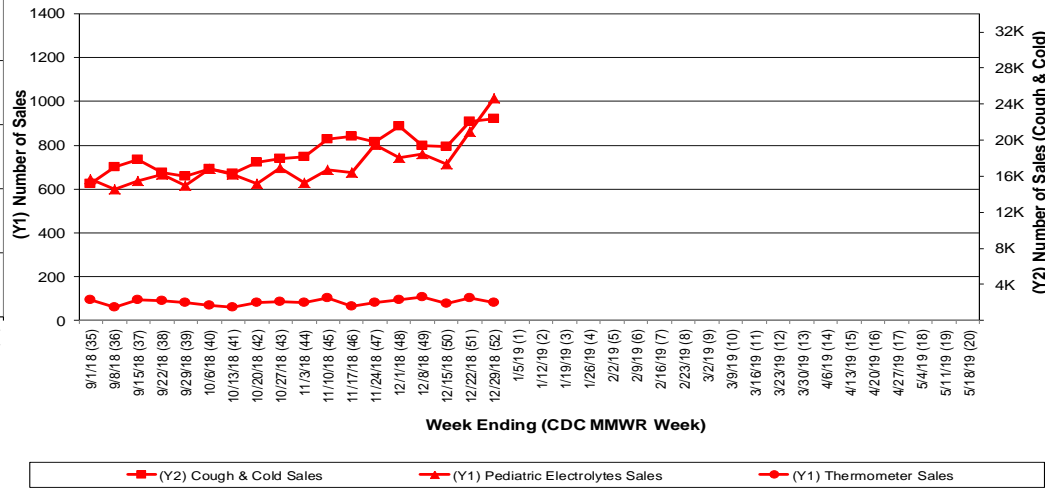
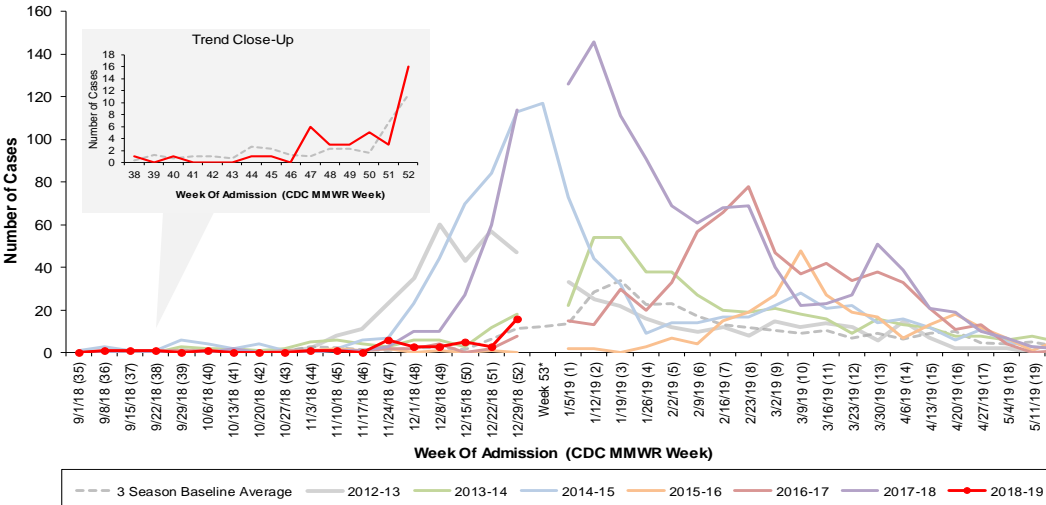
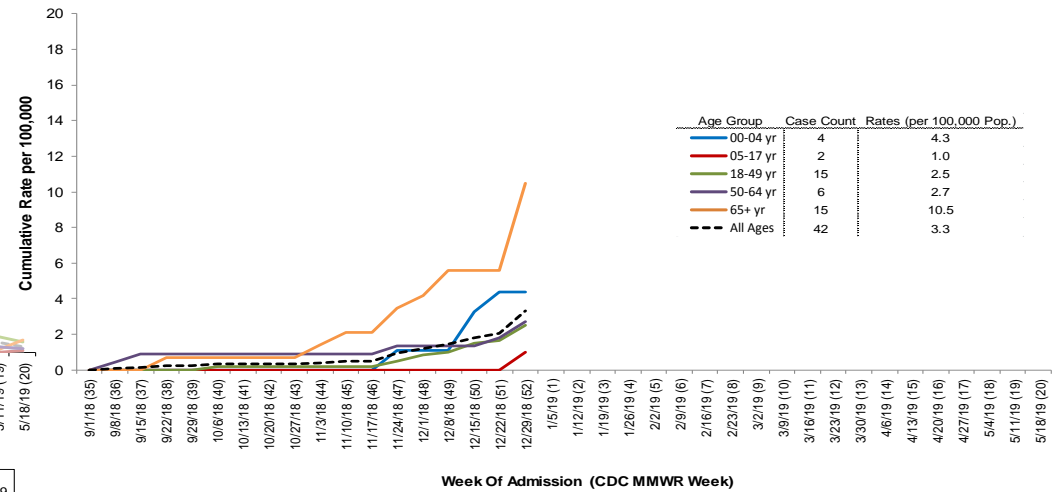


Figure 7: Columbus and Franklin County Jurisdiction Confirmed Influenza Associated Hospitalizations by Hospital Admission Week (As of 1/3/2019)



Columbus and Franklin County, OH Jurisdiction Confirmed Influenza Hospitalization Cumulative Rates (per 100,000) by Age-Group and Admission Week, 2018-2019 Season



\*Note: Certain years have a 53rd week (e.g., season 2014-15) based on CDCs MMWR Weeks.