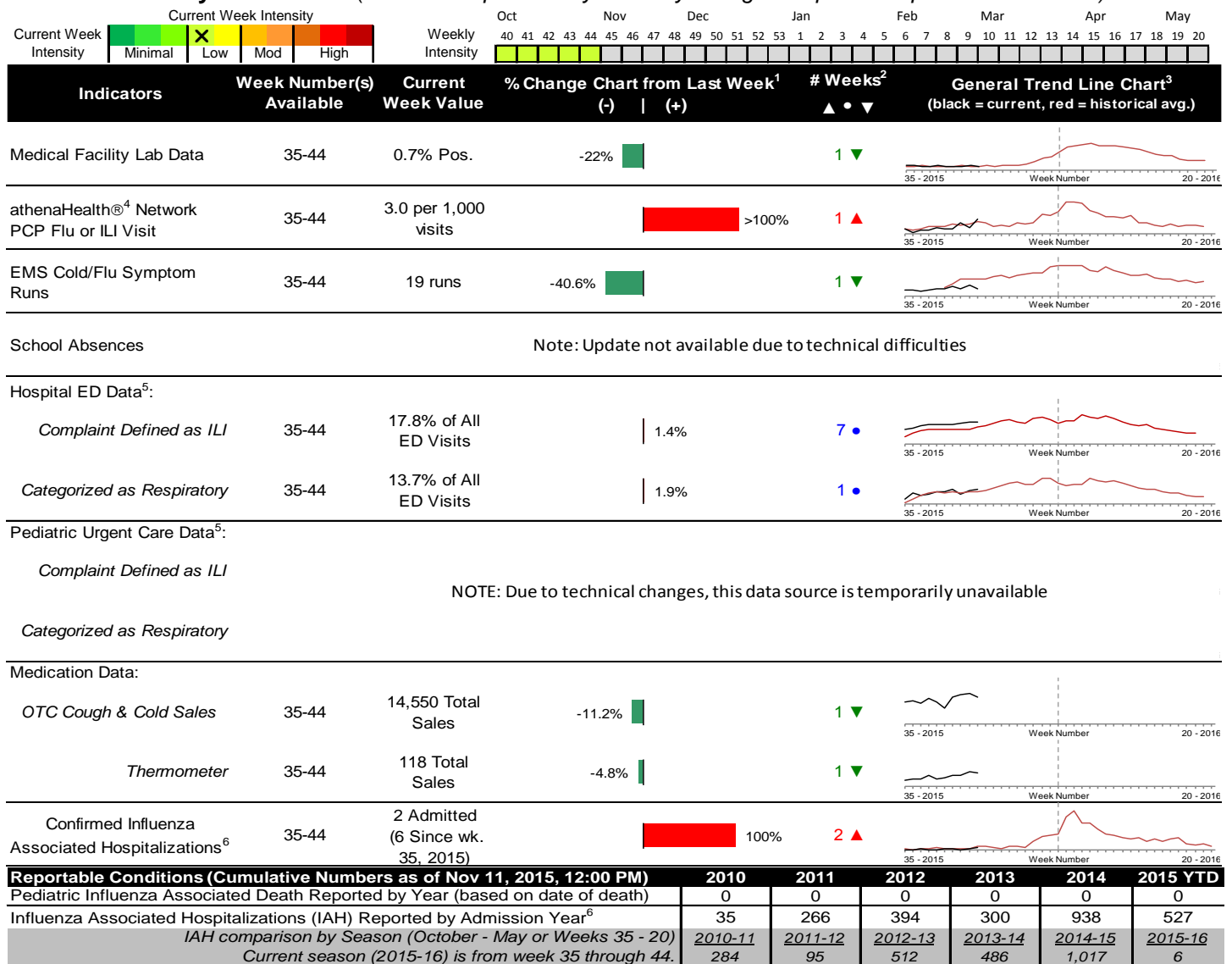


### Highlights

- In week 44, local flu activity indicator trends were mixed. In general, local flu intensity continues to be low, but increased slightly compared to last week.
- Geographic spread and local intensity designation (Click [here](#) for definitions) = SPORADIC, LOW
- Local medical facility labs reported 811 tests run with 6 (0.7%) positive results for week 44 of 2015. This is lower than last week's 0.9% and is slightly lower than the weekly baseline.
- The percentage of ED visits for influenza-like-illness (ILI) and respiratory symptoms were both stable compared to week 43. The percentage of ED visits for ILI is slightly above the baseline average while respiratory symptom visits are similar to its weekly baseline average.
- In week 44 of 2015, trends for the local over-the-counter medication sales were mixed (decrease in cough and cold, thermometer, chest rub, adult anti-fever, and throat lozenge sales; increase in electrolyte and pediatric anti-fever sales) compared to last week.
- Nationally in week 44, influenza activity was low. Please [visit the CDC website for specific information](#) (National data is usually updated on Friday of each week).

### Local Flu Activity Dashboard (All data are preliminary and may change as updated reports are received.)



<sup>1</sup>Interpret with caution. Indicators with small numbers subject to large weekly percentage fluctuations.

<sup>2</sup>Number of weeks "▲" = Increase (>2%), "▼" = Decrease (>2%), "●" = Stable (-2% to +2%).

<sup>3</sup>Black line is current years data. Based on data availability, red line is historical average (excluding pandemic year).

<sup>4</sup>Data Source: Medical claims data from athenaHealth® (www.athenahealth.com). Rate of Flu or ILI visits to Franklin County, OH athenaHealth® network primary care practices/physicians.

<sup>5</sup>Franklin County, OH residents only (based on zipcode). NOTE: Excludes one hospital system included in the past due to technical changes affecting visit classification assignment and numbers.

<sup>6</sup>Confirmed cases only. Based on jurisdiction equal to Franklin County or City of Columbus and admission date available in ODRS.

### **CDC 122-Cities Mortality Reporting System: Pneumonia and Influenza (P&I) Mortality**

In week 44 of 2015, 2.6% of all Columbus and Franklin County deaths were attributed to pneumonia and influenza. Nationally, 5.7% of deaths reported were attributed to pneumonia and influenza in week 44. This national percentage is below the national epidemic threshold of 6.2% for week 44.

### **Influenza Morbidity and Influenza-Like Illness (ILI) Reports**

In week 44, the preliminary local influenza and influenza-like-illness (ILI) visit rate to athenaHealth® providers (3.0 per 1,000 visits) increased compared to the previous week and is above the baseline average for the week (Figure 1). The week 44 percentage of Emergency Department (ED) visits for ILI symptoms was stable compared to the previous week (Figure 3) and is slightly higher than the historic baseline for the week.

Nationally, during week 44 of 2015, 1.4% of patient visits reported through the US Outpatient Influenza-like Illness Surveillance Network (ILINet), were due to influenza-like illness (ILI). The percentage is below the national baseline of 2.1%.

### **Laboratory Surveillance**

During week 44 of 2015, reporting Franklin County sentinel medical facility laboratories tested 811 specimens, with 6 (0.7%) positive (Figure 4). The total number of tests done by local reporting labs from week 35 of 2014 through week 44 of 2015 is 6,236 with 48 (0.8%) positives (31 type A, 16 type B, 1 both A and B, 0 type unknown).

Nationally in week 44 of 2015, clinical laboratories reported 10,271 specimens tested for influenza viruses, 128 (1.2%) of which were positive (75 type A, 53 type B). Public health laboratories reported testing 606 specimens, 18 of which were positive (10 type A – of which 1 were A(H1N1)pdm09, 7 were A/H3, and 2 were not subtyped; 8 type B – of which 1 was Victoria lineage and 7 lineage not performed). Please visit the CDC website for more information.

Participating Ohio clinical labs reported 3,062 specimens tested for influenza this season thus far. Positive results include: (1) A(H1N1)pdm09; (1) A/H3N2; (4) Flu A Not Subtyped, and (4) Flu B (through 11/7/15). ODH Public Health Lab reported 21 specimens tested for influenza from various submitters this season thus far. Positive results include: (1) A(H1N1)pdm09; (0) A/H3N2; (0) Influenza B (through 11/7/15). Please visit the ODH website for more information.

### **ED Respiratory Visits**

In the 44<sup>th</sup> week of 2015, the percentage of all ED visits categorized as *respiratory* was stable compared to the percentage seen the previous week and is similar to its historic baseline for the week (Figure 5).

### **Over-the-Counter (OTC) Medication Sales**

In week 44 of 2015, trends for the local over-the-counter medication sales tracked were mixed (decrease in cough and cold, thermometer, chest rub, adult anti-fever, and throat lozenge sales; increase in electrolyte and pediatric anti-fever sales) compared to last week.

### **Additional Influenza Activity Web Links:**

Ohio Seasonal Flu Surveillance: <http://www.odh.ohio.gov/features/odhfeatures/seasflu/ohfluactivity.aspx>

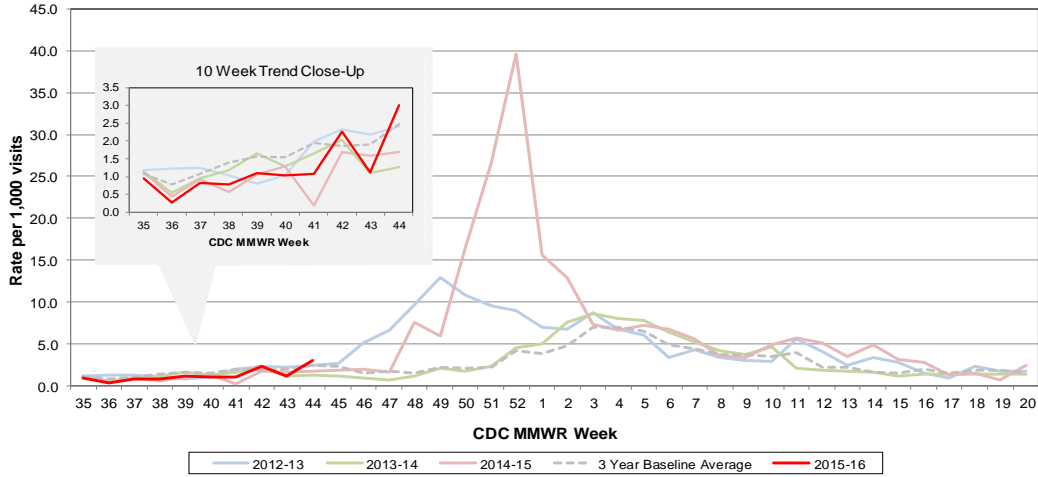
CDC National Seasonal Flu Surveillance Reports: <http://www.cdc.gov/flu/weekly/>

CDC International Flu Activity Map: <http://www.cdc.gov/flu/international/activity.htm>

World Health Organization Situation Updates: [http://www.who.int/influenza/surveillance\\_monitoring/en/](http://www.who.int/influenza/surveillance_monitoring/en/)

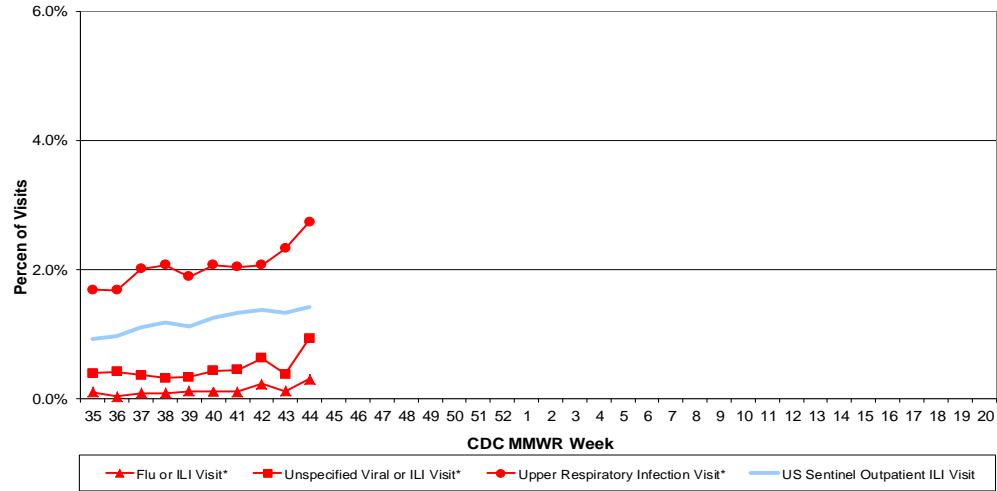
Columbus & Franklin County Influenza Monitoring Summary – Week 44, 2015 (11/1/2015-11/31/2015)

**Figure 1: Local Participating Outpatient Primary Care Provider Influenza or Influenza-Like Illness Visit Rate\*, Franklin County, OH**



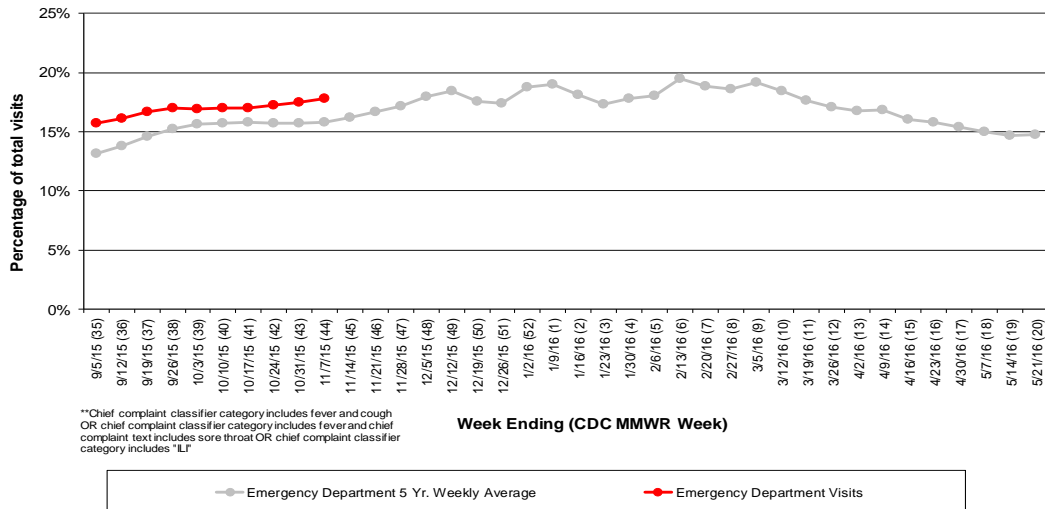
\*Source: Medical Claims data from athenaHealth®  
 Note: athenaHealth® claims data are subject to filing and processing time lags. Historical data are updated when they are received.

**Figure 2: Percentage of Local Outpatient Participating Provider\* and CDC National Outpatient Sentinel Health Care Provider Site visits for ILI and Associated Illnesses, 2015-16**



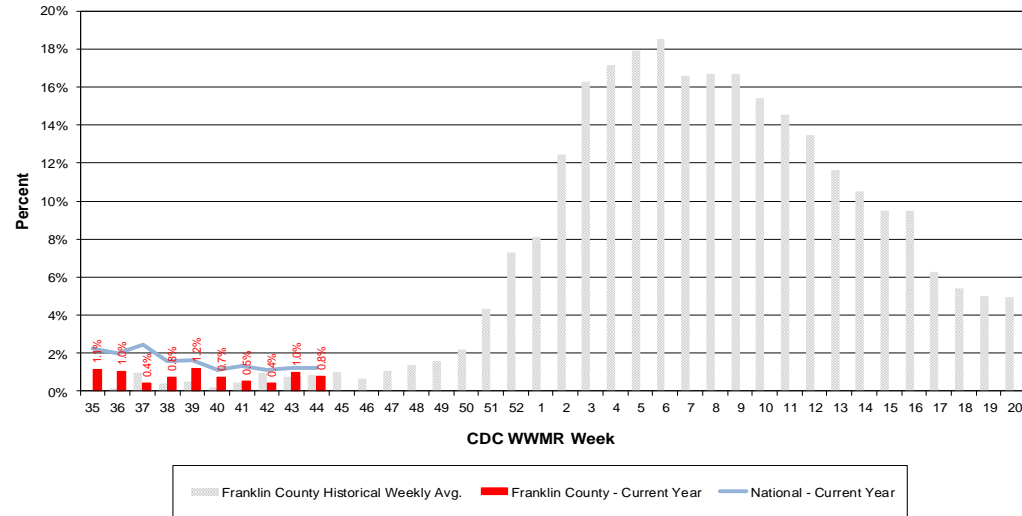
\*Source: Local medical claims data provided by athenaHealth®  
 Note: athenaHealth® claims data are subject to filing and processing time lags. Historical data are updated when they are received.

**Figure 3: Franklin County Resident ILI Defined\*\* ED Visits, 2015-16, Franklin County, OH**



\*\*Chief complaint classifier category includes fever and cough OR chief complaint classifier category includes fever and chief complaint text includes sore throat OR chief complaint classifier category includes "ILI"

**Figure 4: Percentage of Local Reporting and National Laboratory Positive Influenza Tests by Week, 2015-16**



Columbus & Franklin County Influenza Monitoring Summary – Week 44, 2015 (11/1/2015-11/31/2015)

Figure 5: Franklin County Resident Respiratory ED Visits, 2015-16, Franklin County, OH

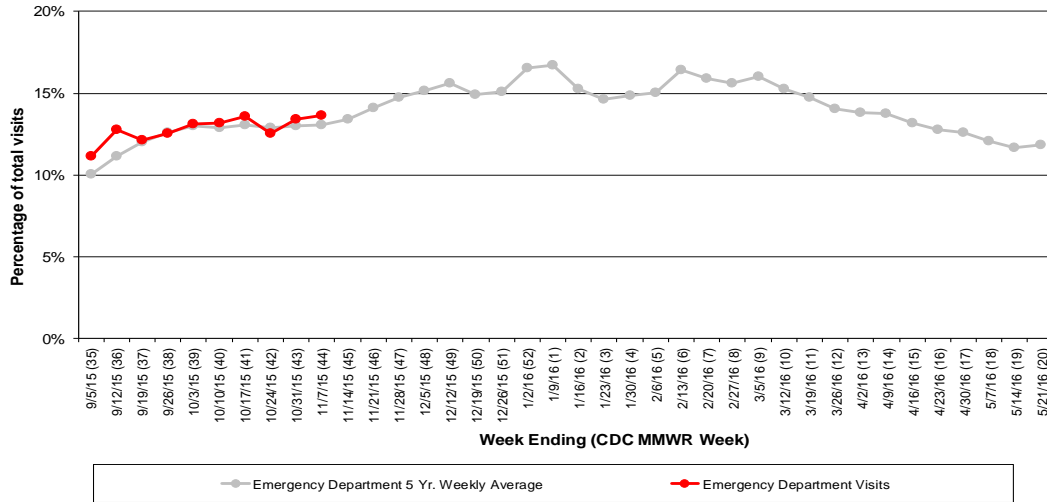


Figure 6: Selected Number of Over-the-Counter Medication Sales, 2015-16, Franklin County, OH

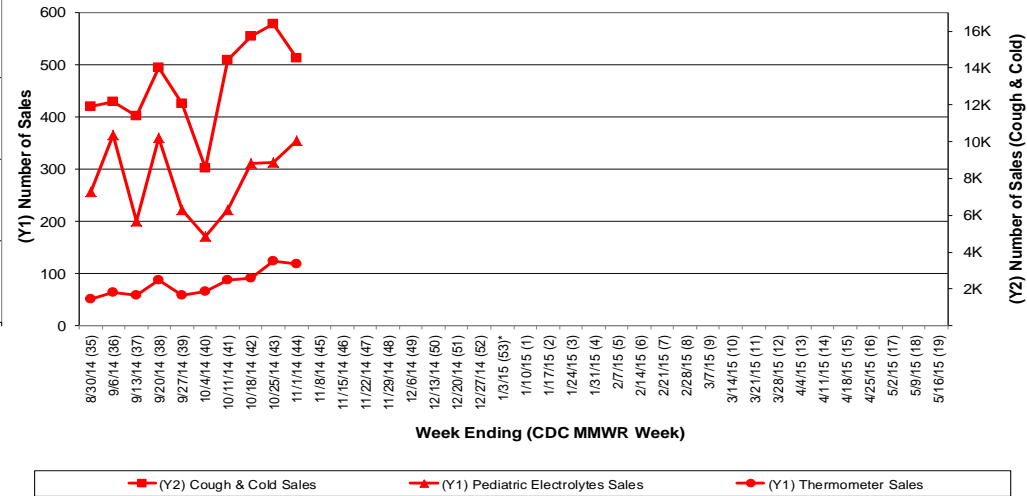
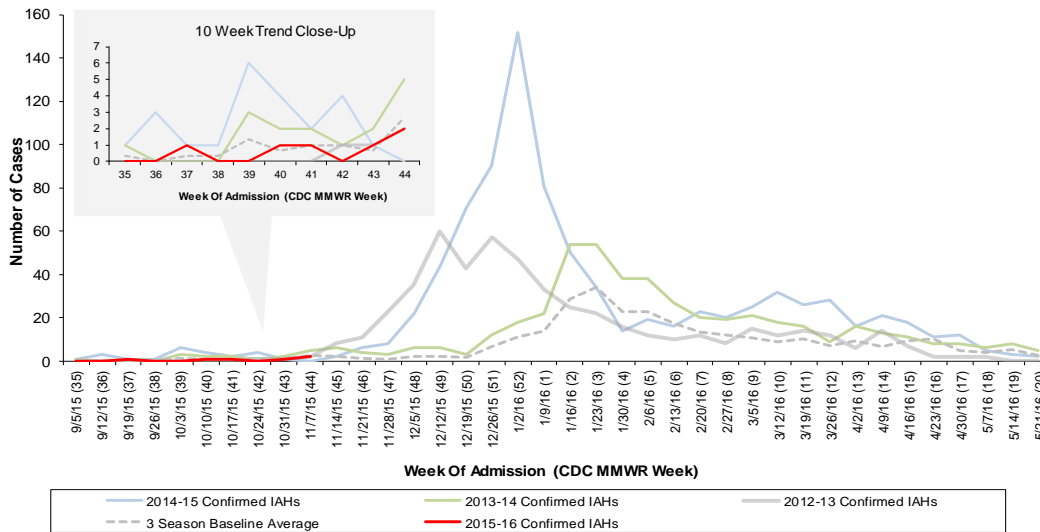


Figure 7: Franklin County Confirmed Influenza Associated Hospitalizations by Hospital Admission Week (As of 12:00 PM, 11/11/2015)



Franklin County, OH, Confirmed Influenza Hospitalization Cumulative Rates (per 100,000) by Age-Group and Admission Week, 2015-2016 Season

