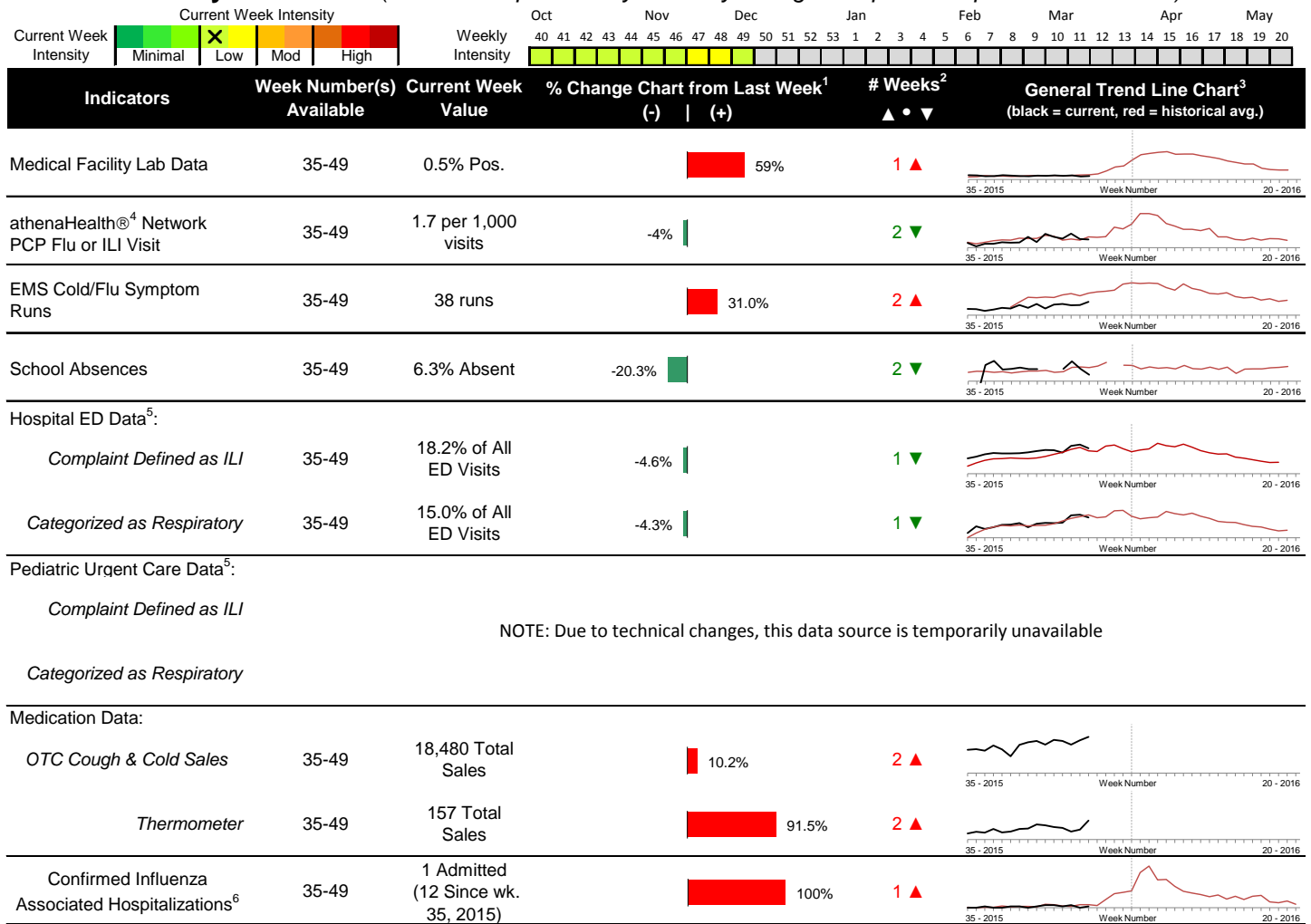


Highlights

- In week 49, individual local flu activity indicator trends were mixed. Overall, local flu intensity continues to be low.
- Geographic spread and local intensity designation (Click [here](#) for definitions) = SPORADIC, LOW
- Local medical facility labs reported 958 tests run with 5 (0.5%) positive results for week 49 of 2015. This is slightly higher than last week's 0.3% and is lower than the weekly baseline.
- The percentage of ED visits for influenza-like-illness (ILI) and respiratory symptoms both decreased slightly compared to week 48. The percentage of ED visits for ILI is similar to its baseline average for the week, while respiratory symptoms were slightly lower than its baseline average for the week.
- In week 49 of 2015, trends for all local over-the-counter medication sales tracked increased (increase in cough and cold, electrolyte, thermometer, chest-rub, pediatric anti-fever, adult anti-fever, and throat lozenge sales) compared to last week.
- Nationally in week 49, influenza activity increased slightly in the United States but remained low overall. Please [visit the CDC website for specific information](#) (National data is usually updated on Friday of each week).

Local Flu Activity Dashboard *(All data are preliminary and may change as updated reports are received.)*



| Reportable Conditions (Cumulative Numbers as of Dec 16, 2015, 10:00 AM) | 2010 | 2011 | 2012 | 2013 | 2014 | 2015 YTD |
|---|------|------|------|------|-------|----------|
| Pediatric Influenza Associated Death Reported by Year (based on date of death) | 0 | 0 | 0 | 0 | 0 | 0 |
| Influenza Associated Hospitalizations (IAH) Reported by Admission Year ⁵ | 35 | 266 | 394 | 300 | 938 | 533 |
| IAH comparison by Season (October - May or Weeks 35 - 20) | | | | | | |
| Current season (2015-16) is from week 35 through 49. | 284 | 95 | 512 | 486 | 1,017 | 12 |

¹Interpret with caution. Indicators with small numbers subject to large weekly percentage fluctuations.

²Number of weeks "▲" = Increase (>2%), "▼" = Decrease (>2%), "●" = Stable (-2% to +2%).

³Black line is current years data. Based on data availability, red line is historical average (excluding pandemic year).

⁴Data Source: Medical claims data from athenaHealth[®] (www.athenahealth.com). Rate of Flu or ILI visits to Franklin County, OH athenaHealth[®] network primary care practices/physicians.

⁵Franklin County, OH residents only (based on zipcode). NOTE: Excludes one OH hospital system included in the past due to technical changes affecting visit classification assignment and numbers.

⁶Confirmed cases only. Based on jurisdiction equal to Franklin County or City of Columbus and admission date available in ODRS.

CDC 122-Cities Mortality Reporting System: Pneumonia and Influenza (P&I) Mortality

In week 49 of 2015, 4.2% of all Columbus and Franklin County deaths were attributed to pneumonia and influenza. Nationally in week 49, 6.0% of deaths reported were attributed to pneumonia and influenza. This national percentage was below the national epidemic threshold of 6.7% for week 49.

Influenza Morbidity and Influenza-Like Illness (ILI) Reports

In week 49, the preliminary local influenza and influenza-like-illness (ILI) visit rate to athenaHealth® providers (1.7 per 1,000 visits) decreased slightly compared to the previous week and is slightly below the baseline average for the week (Figure 1). The week 49 percentage of Emergency Department (ED) visits for ILI decreased slightly compared to the previous week (Figure 3) and is similar to the historic baseline for the week.

Nationally, during week 49 of 2015, 1.9% of patient visits reported through the US Outpatient Influenza-like Illness Surveillance Network (ILINet), were due to influenza-like illness (ILI). The percentage is below the national baseline of 2.1% for week 49.

Laboratory Surveillance

During week 49 of 2015, reporting Franklin County sentinel medical facility laboratories tested 958 specimens, with 5 (0.5%) positive (Figure 4). The total number of tests done by local reporting labs from week 35 of 2014 through week 49 of 2015 is 10,680 with 80 (0.75%) positives (56 type A, 20 type B, 4 both A and B, 0 type unknown).

Nationally in week 49 of 2015, clinical laboratories reported 12,525 specimens tested for influenza viruses, 208 (1.7%) of which were positive (117 type A, 91 type B). Public health laboratories reported testing 786 specimens, 41 of which were positive (30 type A – of which 17 were A(H1N1)pdm09, 11 were A/H3, and 2 were not subtyped; 11 type B – of which 4 were Yamagata lineage, 0 were Victoria lineage, and 7 where lineage was not performed). Please visit the CDC website for more information, including cumulative data since week 40.

Participating Ohio clinical labs reported 7,054 specimens tested for influenza this season thus far. Positive results include: (1) A(H1N1)pdm09; (1) A/H3N2; (11) Flu A Not Subtyped, and (7) Flu B (through 12/12/15). ODH Public Health Lab reported 72 specimens tested for influenza from various submitters this season thus far. Positive results include: (2) A(H1N1)pdm09; (1) A/H3N2; (1) Influenza B (through 12/12/15). Please visit the ODH website for more information.

ED Respiratory Visits

In the 49th week of 2015, the percentage of all ED visits categorized as *respiratory* decreased slightly compared to the percentage seen the previous week and is slightly lower than its historic baseline for the week (Figure 5).

Over-the-Counter (OTC) Medication Sales

In week 49 of 2015, trends for all local over-the-counter medication sales being tracked increased (increase in cough and cold, electrolyte, thermometer, chest rub, pediatric anti-fever, adult anti-fever, and throat lozenge sales) compared to last week.

Additional Influenza Activity Web Links:

Ohio Seasonal Flu Surveillance: <http://www.odh.ohio.gov/features/odhfeatures/seasflu/ohfluactivity.aspx>

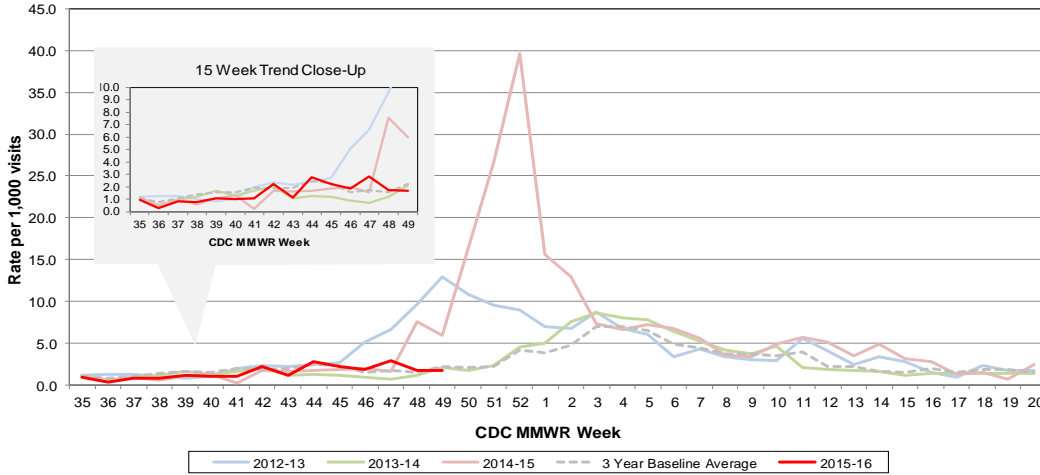
CDC National Seasonal Flu Surveillance Reports: <http://www.cdc.gov/flu/weekly/>

CDC International Flu Activity Map: <http://www.cdc.gov/flu/international/activity.htm>

World Health Organization Situation Updates: http://www.who.int/influenza/surveillance_monitoring/en/

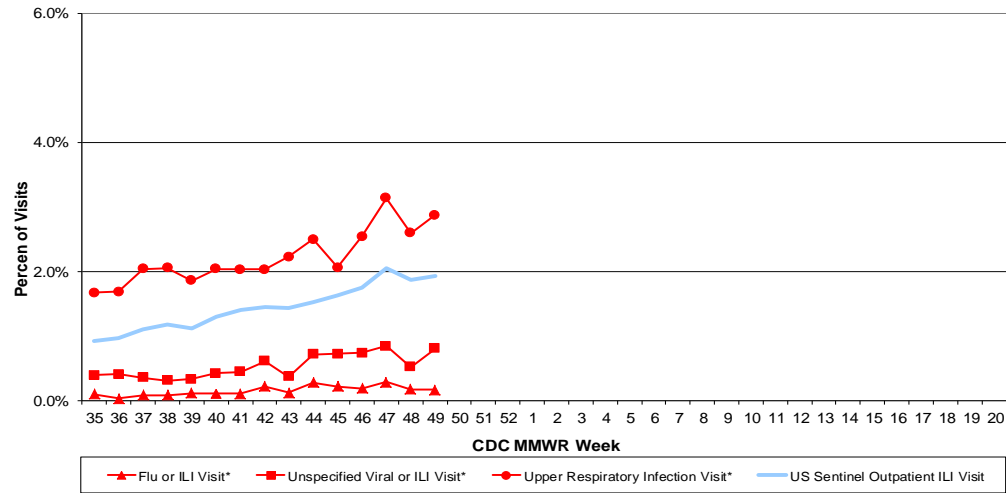
Columbus & Franklin County Influenza Monitoring Summary – Week 49, 2015 (12/6/2015-12/12/2015)

Figure 1: Local Participating Outpatient Primary Care Provider Influenza or Influenza-Like Illness Visit Rate*, Franklin County, OH



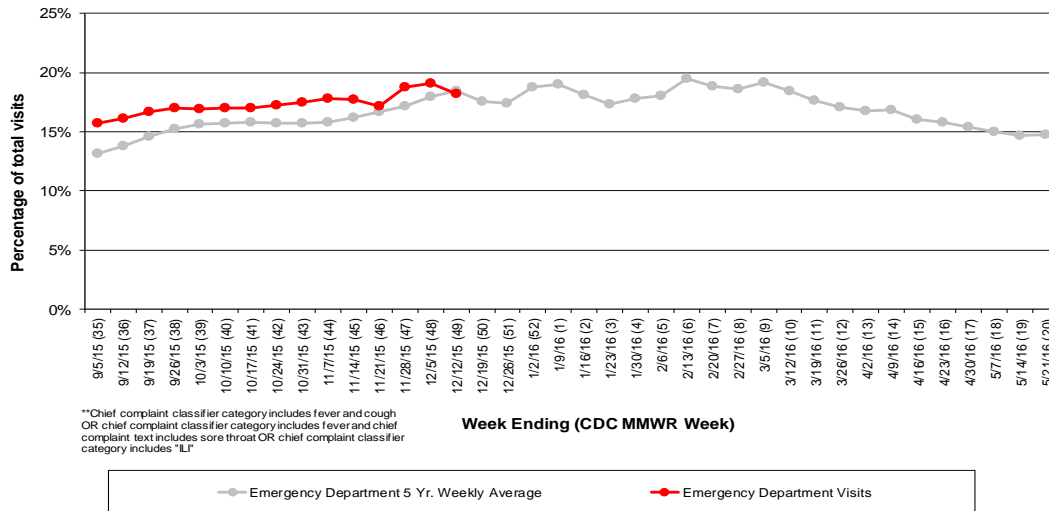
*Source: Medical Claims data from athenaHealth®
 Note: athenaHealth® claims data are subject to filing and processing time lags. Historical data are updated when they are received.

Figure 2: Percentage of Local Outpatient Participating Provider* and CDC National Outpatient Sentinel Health Care Provider Site visits for ILI and Associated Illnesses, 2015-16



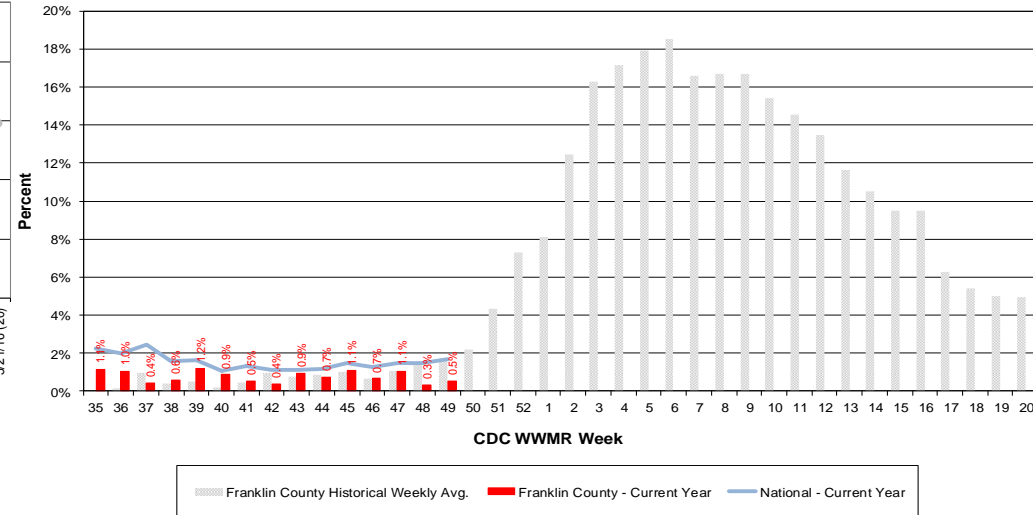
*Source: Local medical claims data provided by athenaHealth®
 Note: athenaHealth® claims data are subject to filing and processing time lags. Historical data are updated when they are received.

Figure 3: Franklin County Resident ILI Defined ED Visits, 2015-16, Franklin County, OH**



**Chief complaint classifier category includes fever and cough
 OR chief complaint classifier category includes fever and chief
 complaint text includes sore throat OR chief complaint classifier
 category includes "LI"

Figure 4: Percentage of Local Reporting and National Laboratory Positive Influenza Tests by Week, 2015-16



Columbus & Franklin County Influenza Monitoring Summary – Week 49, 2015 (12/6/2015-12/12/2015)

Figure 5: Franklin County Resident Respiratory ED Visits, 2015-16, Franklin County, OH

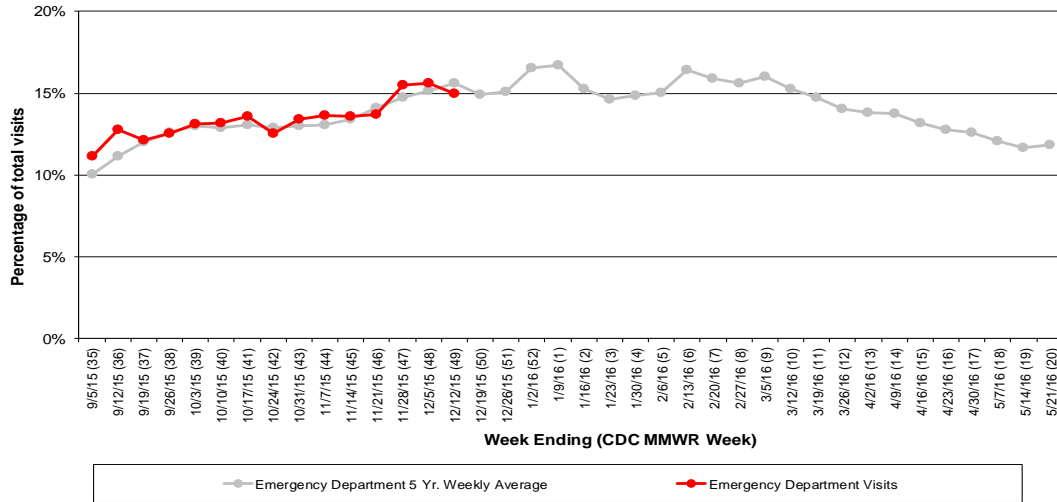


Figure 6: Selected Number of Over-the-Counter Medication Sales, 2015-16, Franklin County, OH

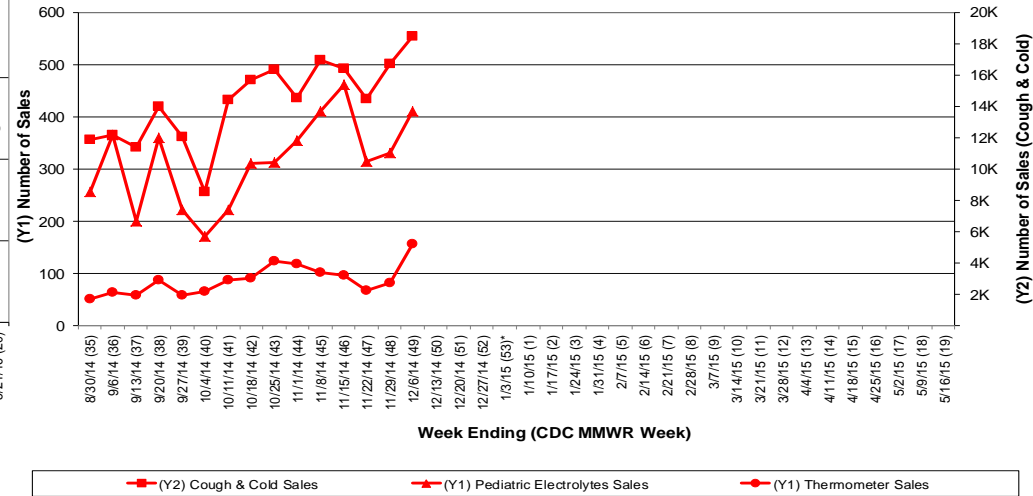
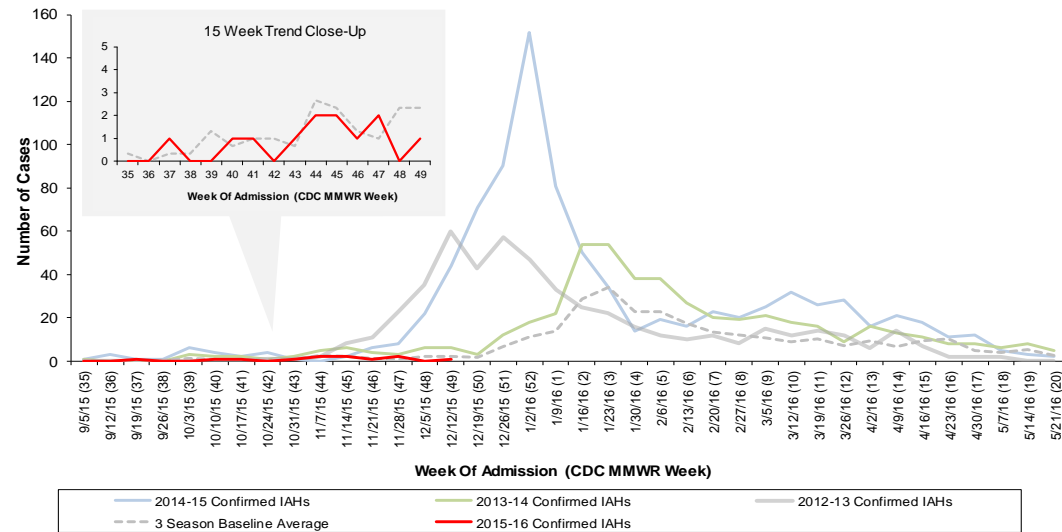


Figure 7: Franklin County Confirmed Influenza Associated Hospitalizations by Hospital Admission Week (As of 10:00 AM, 12/16/2015)



Franklin County, OH, Confirmed Influenza Hospitalization Cumulative Rates (per 100,000) by Age-Group and Admission Week, 2015-2016 Season

