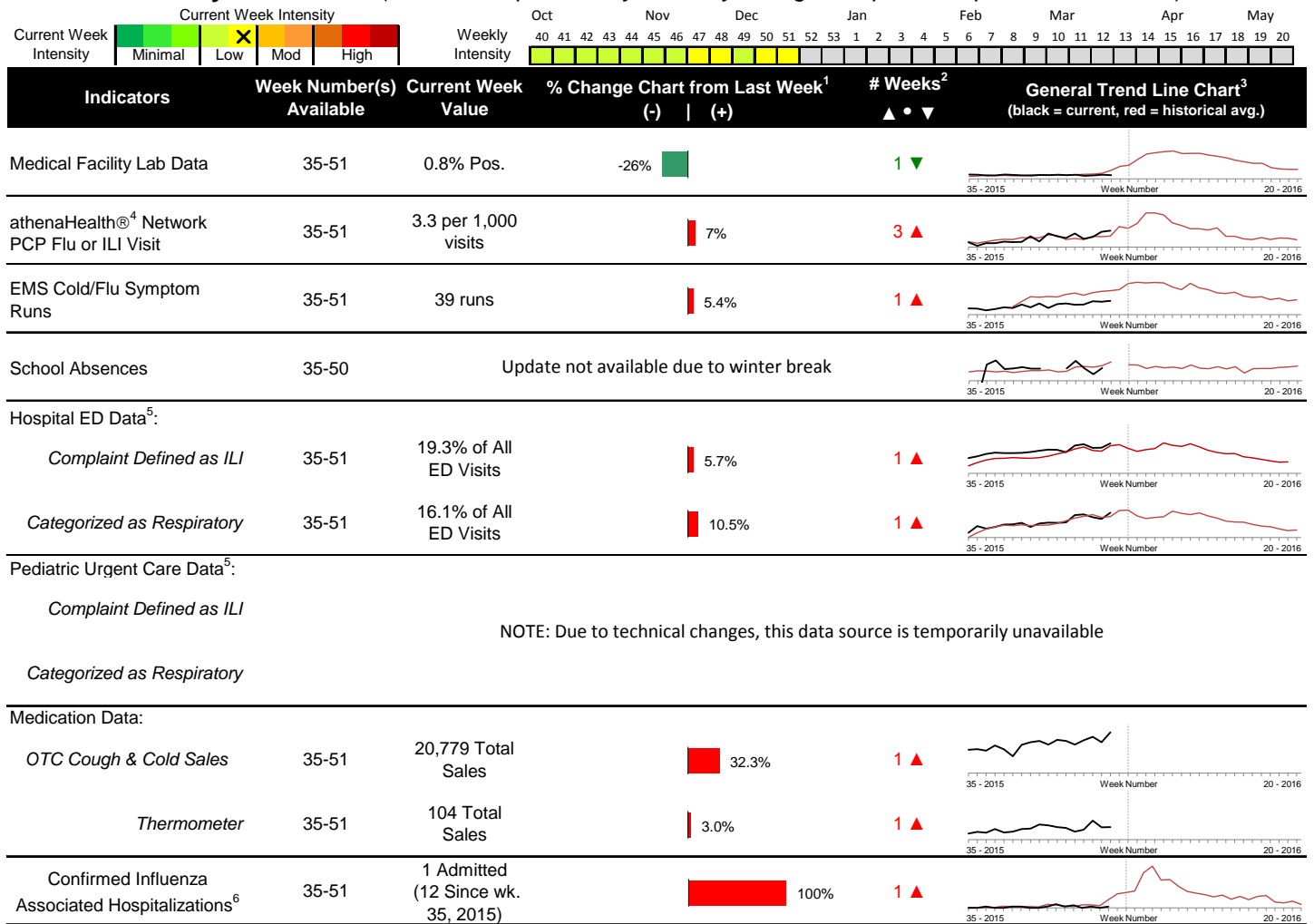


### Highlights

- In week 51, the majority of individual local flu activity indicator trends increased. Overall, local flu intensity continues to be low.
- Geographic spread and local intensity designation (Click [here](#) for definitions) = SPORADIC, LOW
- Local medical facility labs reported 873 tests run with 7 (0.8%) positive results for week 51 of 2015. This is lower than last week's 1.1% and is lower than the weekly baseline.
- The percentage of ED visits for influenza-like-illness (ILI), as well as respiratory symptoms, increased compared to week 50. The percentage of ED visits for both ILI and respiratory symptoms are above their baseline averages for the week.
- In week 51 of 2015, trends for all local over-the-counter medication sales tracked increased (increase in cough and cold, electrolyte, thermometer, chest-rub, pediatric anti-fever, adult anti-fever, and throat lozenge sales) compared to last week.
- Updated week 51 National influenza surveillance data was not available at the time of this report. Nationally in week 50, influenza activity increased slightly in the United States. Please [visit the CDC website for specific information](#) (National data is usually updated on Friday of each week).

### Local Flu Activity Dashboard *(All data are preliminary and may change as updated reports are received.)*



Reportable Conditions (Cumulative Numbers as of Dec 30, 2015, 12:00 PM)	2010	2011	2012	2013	2014	2015 YTD
Pediatric Influenza Associated Death Reported by Year (based on date of death)	0	0	0	0	0	0
Influenza Associated Hospitalizations (IAH) Reported by Admission Year <sup>6</sup>	35	266	394	300	940	533
IAH comparison by Season (October - May or Weeks 35 - 20)	2010-11	2011-12	2012-13	2013-14	2014-15	2015-16
Current season (2015-16) is from week 35 through 51.	284	95	512	486	1,017	12

<sup>1</sup>Interpret with caution. Indicators with small numbers subject to large weekly percentage fluctuations.

<sup>2</sup>Number of weeks "▲" = Increase (>2%), "▼" = Decrease (>2%), "●" = Stable (-2% to +2%).

<sup>3</sup>Black line is current years data. Based on data availability, red line is historical average (excluding pandemic year).

<sup>4</sup>Data Source: Medical claims data from athenaHealth® (www.athenahealth.com). Rate of Flu or ILI visits to Franklin County, OH athenaHealth® network primary care practices/physicians.

<sup>5</sup>Franklin County, OH residents only (based on zipcode). NOTE: Excludes one hospital system included in the past due to technical changes affecting visit classification assignment and numbers.

<sup>6</sup>Confirmed cases only. Based on jurisdiction equal to Franklin County or City of Columbus and admission date available in ODRS.

### **CDC 122-Cities Mortality Reporting System: Pneumonia and Influenza (P&I) Mortality**

In week 51 of 2015, 5.2% of all Columbus and Franklin County deaths were attributed to pneumonia and influenza. Updated National week 51 P&I mortality data was not available at the time of this report. Nationally in week 50, 6.3% of deaths reported were attributed to pneumonia and influenza. This national percentage was below the national epidemic threshold of 6.8% for week 50.

### **Influenza Morbidity and Influenza-Like Illness (ILI) Reports**

In week 51, the preliminary local influenza and influenza-like-illness (ILI) visit rate to athenaHealth® providers (3.3 per 1,000 visits) increased compared to the previous week and is above its baseline average for the week (Figure 1). The week 51 percentage of Emergency Department (ED) visits for ILI was stable compared to the previous week (Figure 3) and is slightly higher than the historic baseline for the week.

Updated week 51 US Outpatient Influenza-like Illness Surveillance Network (ILINet) figures were not available at the time of this report. Nationally, during week 50 of 2015, 2.2% of patient visits reported through ILINet were due to influenza-like illness (ILI). The percentage is above the national baseline of 2.1% for week 50.

### **Laboratory Surveillance**

During week 51 of 2015, reporting Franklin County sentinel medical facility laboratories tested 873 specimens, with 7 (0.8%) positive (Figure 4). The total number of tests done by local reporting labs from week 35 of 2014 through week 51 of 2015 is 12,567 with 98 (0.78%) positives (66 type A, 28 type B, 4 both A and B, 0 type unknown).

Updated week 51 National lab figures were not available at the time of this report. Nationally in week 50 of 2015, clinical laboratories reported 12,890 specimens tested for influenza viruses, 372 (2.9%) of which were positive (211 type A, 161 type B). Public health laboratories reported testing 707 specimens, 55 of which were positive (43 type A – of which 23 were A(H1N1)pdm09, 14 were A/H3, and 6 were not subtyped; 12 type B – of which 6 were Yamagata lineage, 2 were Victoria lineage, and 4 where lineage was not performed). Please visit the CDC website for more information, including cumulative data since week 40.

In week 51, participating Ohio clinical labs reported 8,934 specimens tested for influenza this season thus far. Positive results include: (1) A(H1N1)pdm09; (2) A/H3N2; (15) Flu A Not Subtyped, and (10) Flu B (through 12/26/15). ODH Public Health Lab reported 83 specimens tested for influenza from various submitters this season thus far. Positive results include: (4) A(H1N1)pdm09; (1) A/H3N2; (1) Influenza B (through 12/26/15). Please visit the ODH website for more information.

### **ED Respiratory Visits**

In the 51<sup>st</sup> week of 2015, the percentage of all ED visits categorized as *respiratory* increased compared to the percentage seen the previous week and is higher than its historic baseline for the week (Figure 5).

### **Over-the-Counter (OTC) Medication Sales**

In week 51 of 2015, trends for all local over-the-counter medication sales being tracked increased (increase in cough and cold, electrolyte, thermometer, chest rub, pediatric anti-fever, adult anti-fever, and throat lozenge sales) compared to last week.

### **Additional Influenza Activity Web Links:**

Ohio Seasonal Flu Surveillance: <http://www.odh.ohio.gov/features/odhfeatures/seasflu/ohfluactivity.aspx>

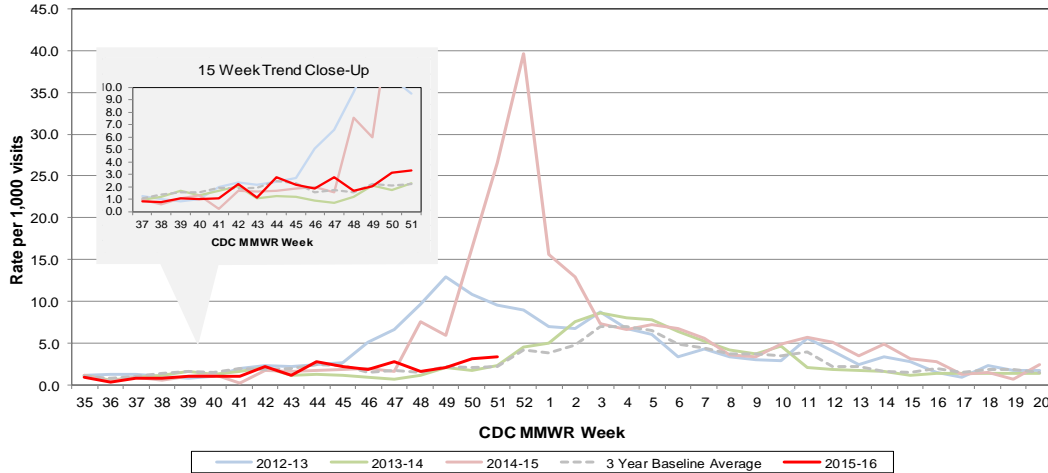
CDC National Seasonal Flu Surveillance Reports: <http://www.cdc.gov/flu/weekly/>

CDC International Flu Activity Map: <http://www.cdc.gov/flu/international/activity.htm>

World Health Organization Situation Updates: [http://www.who.int/influenza/surveillance\\_monitoring/en/](http://www.who.int/influenza/surveillance_monitoring/en/)

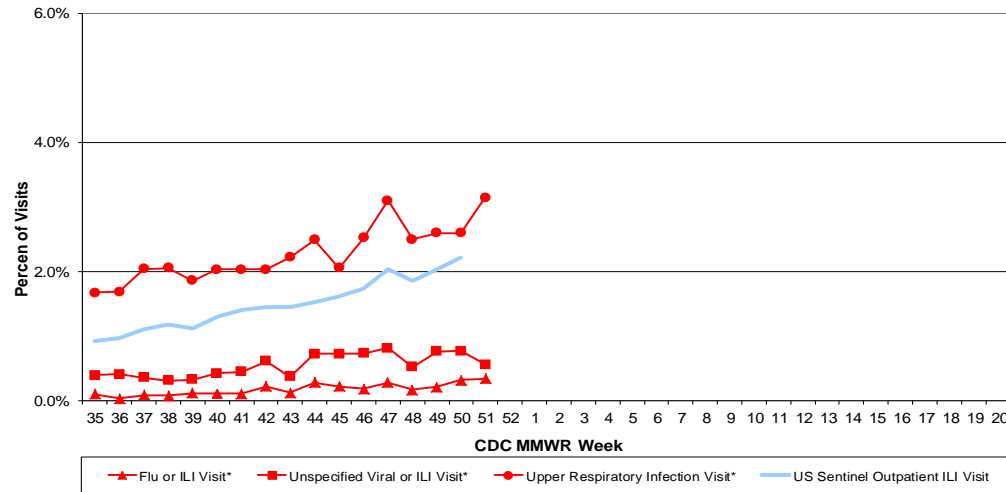
Columbus & Franklin County Influenza Monitoring Summary – Week 51, 2015 (12/20/2015-12/26/2015)

**Figure 1: Local Participating Outpatient Primary Care Provider Influenza or Influenza-Like-Illness Visit Rate\*, Franklin County, OH**



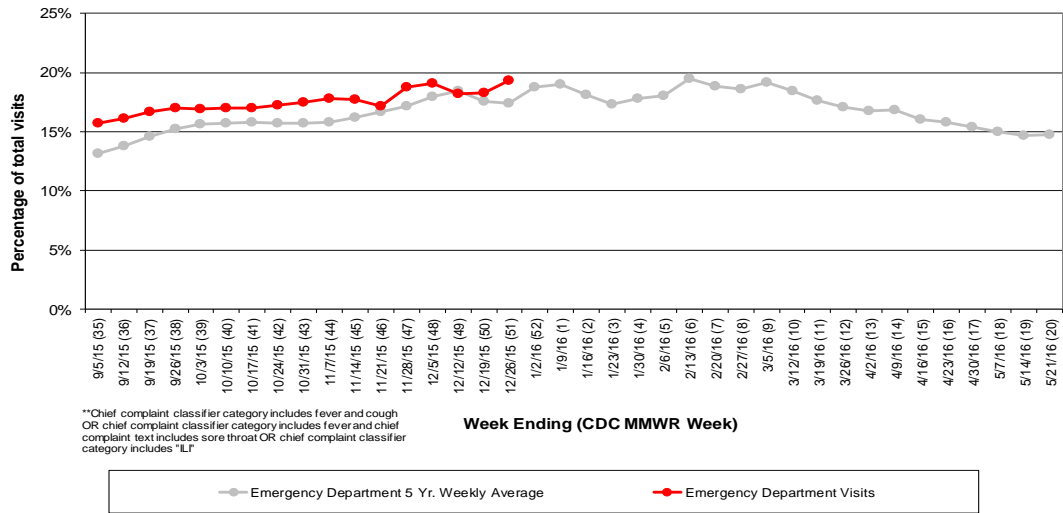
\*Source: Medical Claims data from athenaHealth®  
 Note: athenaHealth® claims data are subject to filing and processing time lags. Historical data are updated when they are received.

**Figure 2: Percentage of Local Outpatient Participating Provider\* and CDC National Outpatient Sentinel Health Care Provider Site visits for ILI and Associated Illnesses, 2015-16**



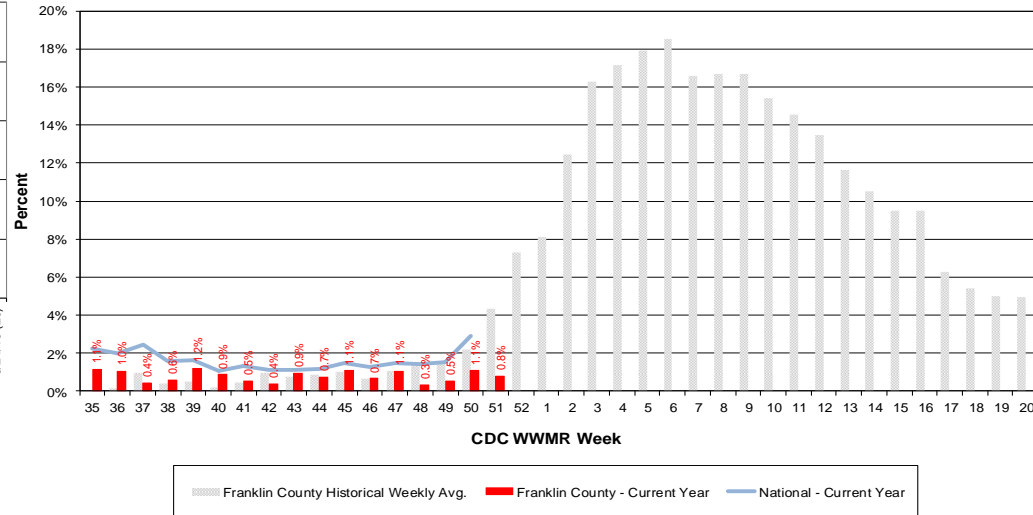
\*Source: Local medical claims data provided by athenaHealth®  
 Note: athenaHealth® claims data are subject to filing and processing time lags. Historical data are updated when they are received.

**Figure 3: Franklin County Resident ILI Defined\*\* ED Visits, 2015-16, Franklin County, OH**



\*\*Chief complaint classifier category includes fever and cough  
 OR chief complaint classifier category includes fever and chief  
 complaint text includes sore throat OR chief complaint classifier  
 category includes "LI"

**Figure 4: Percentage of Local Reporting and National Laboratory Positive Influenza Tests by Week, 2015-16**



Columbus & Franklin County Influenza Monitoring Summary – Week 51, 2015 (12/20/2015-12/26/2015)

Figure 5: Franklin County Resident Respiratory ED Visits, 2015-16, Franklin County, OH

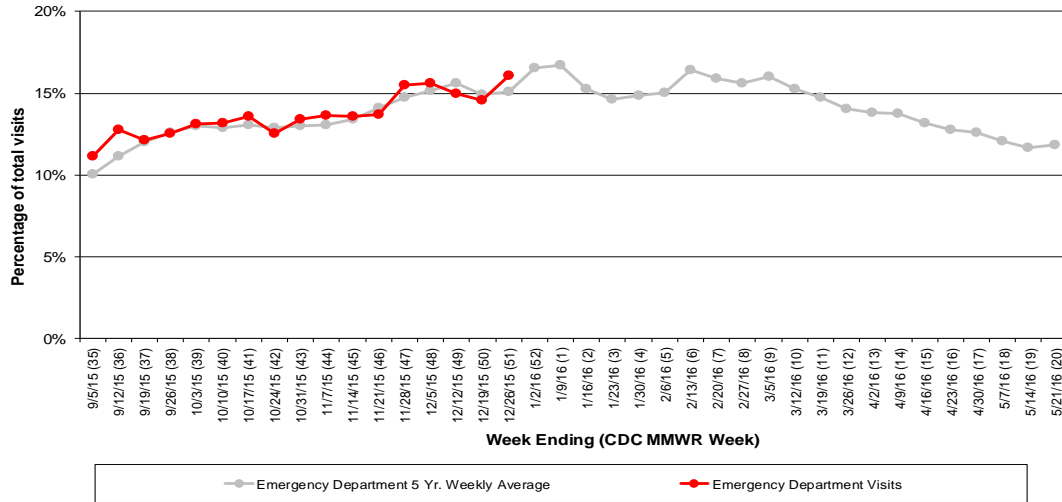


Figure 6: Selected Number of Over-the-Counter Medication Sales, 2015-16, Franklin County, OH

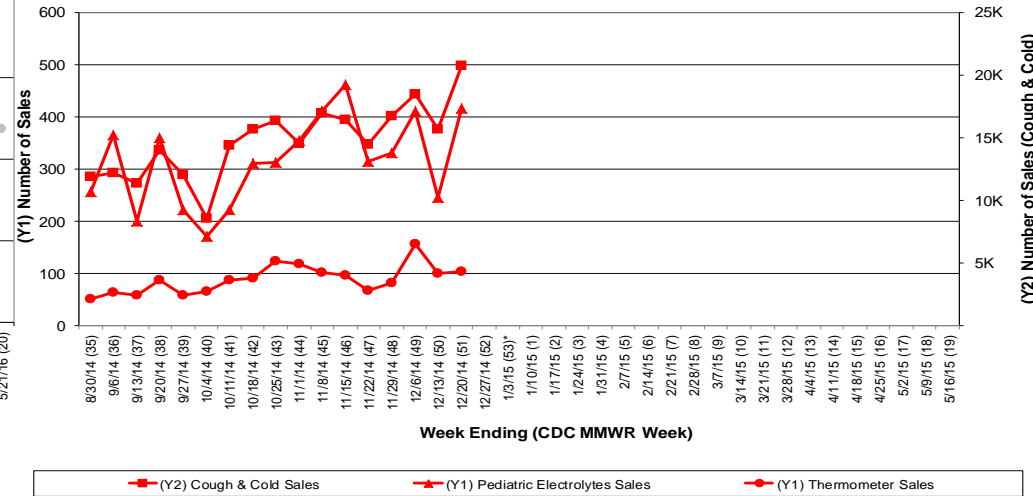
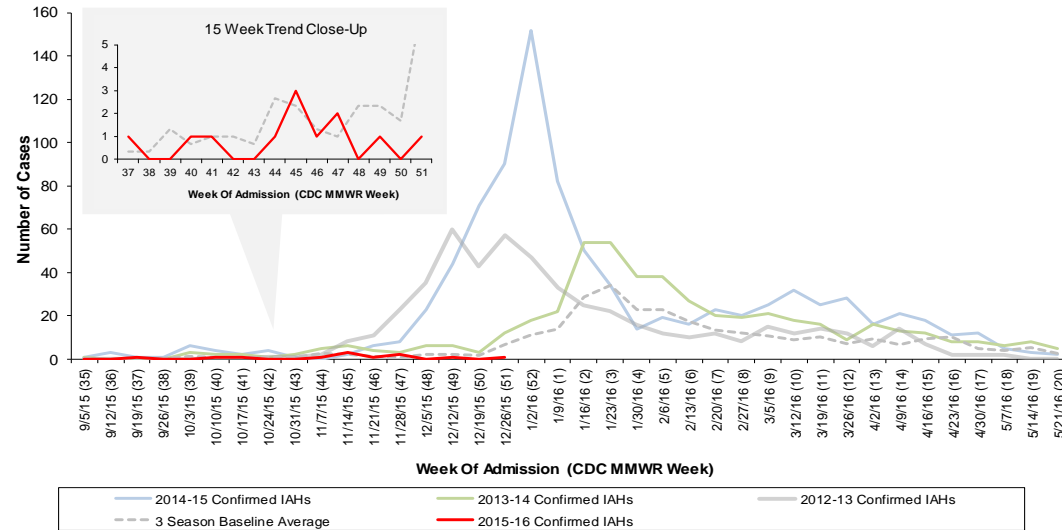


Figure 7: Franklin County Confirmed Influenza Associated Hospitalizations by Hospital Admission Week (As of 12:00 PM, 12/30/2015)



Franklin County, OH, Confirmed Influenza Hospitalization Cumulative Rates (per 100,000) by Age-Group and Admission Week, 2015-2016 Season

