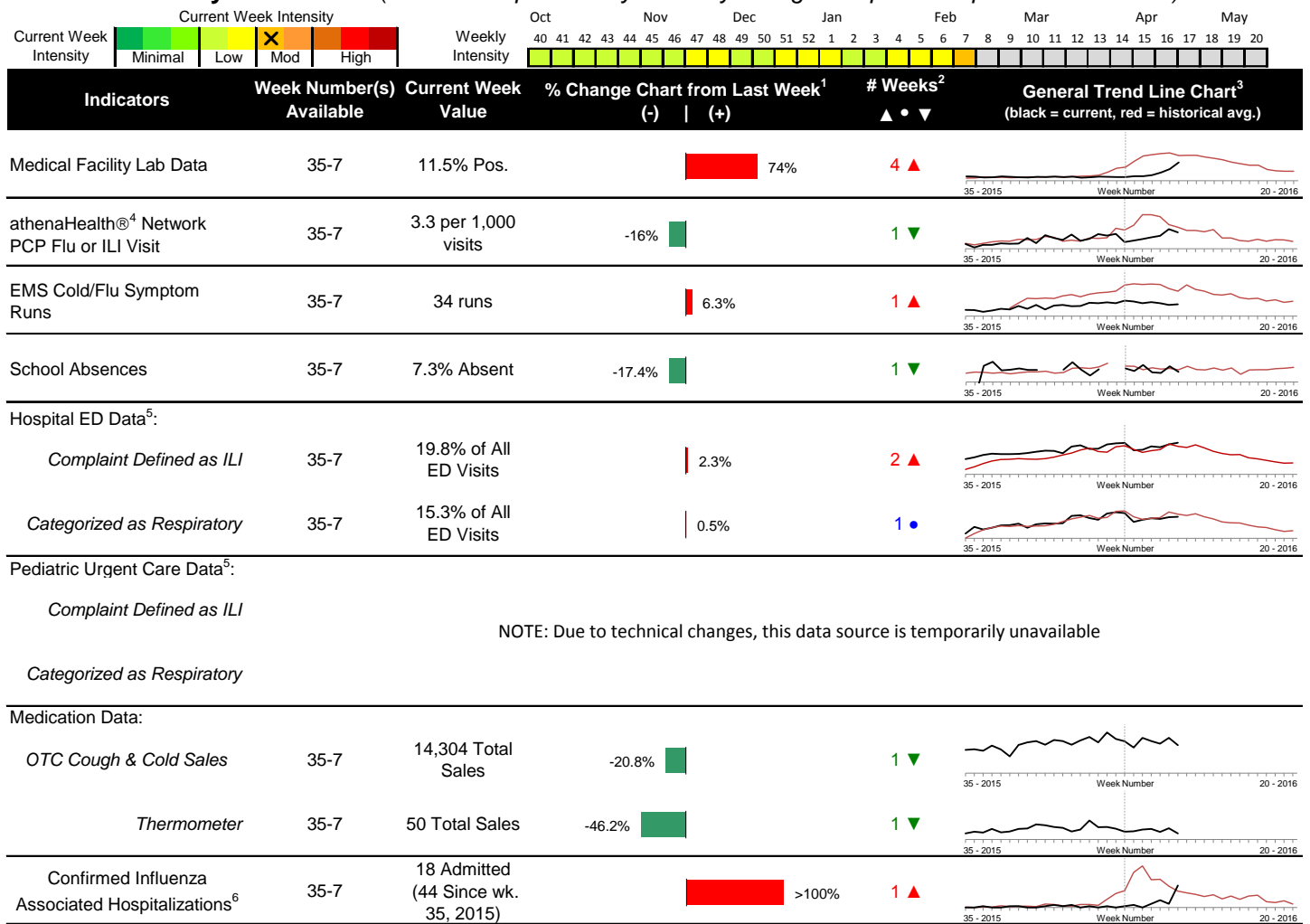


Highlights

- In week 7 of 2016, the individual local flu activity indicator trends were mixed. Overall, local flu intensity for the week was moderate and continued to increase. Notable increases include the lab positive percentage and number of influenza associated hospitalizations.
- Geographic spread and local intensity designation (Click [here](#) for definitions) = WIDESPREAD, MODERATE
- Local medical facility labs reported 1,300 tests run with 150 (11.5%) positive results for week 7 of 2016. This is higher than last week's 6.6% and is lower than the weekly baseline.
- The percentage of ED visits for influenza-like-illness (ILI) increased slightly, while respiratory symptom visits were stable compared to week 6. The percentage of ED visits for ILI is slightly higher than its baseline average, while the respiratory symptom visit percentage was slightly below its baseline average for the week.
- In week 7 of 2016, trends for all of the local over-the-counter medication sales tracked decreased (decrease in cough and cold, electrolyte, thermometer, chest rub, pediatric anti-fever, adult anti-fever, and throat lozenge sales) compared to last week.
- Nationally in week 7, influenza activity increased in the United States. Please [visit the CDC website for specific information](#) (National data is usually updated on Friday of each week).

Local Flu Activity Dashboard (All data are preliminary and may change as updated reports are received.)



NOTE: Due to technical changes, this data source is temporarily unavailable

Reportable Conditions (Cumulative Numbers as of Feb. 26, 2016, 9:30 AM)	2011	2012	2013	2014	2015	2016 YTD
Pediatric Influenza Associated Death Reported by Year (based on date of death)	0	0	0	0	0	0
Influenza Associated Hospitalizations (IAH) Reported by Admission Year ⁶	266	394	300	936	522	38
IAH comparison by Season (October - May or Weeks 35 - 20)	2010-11	2011-12	2012-13	2013-14	2014-15	2015-16
Current season (2015-16) is from week 35 through 7.	284	95	512	486	1,007	44

¹Interpret with caution. Indicators with small numbers subject to large weekly percentage fluctuations.

²Number of weeks "▲" = Increase (>2%), "▼" = Decrease (>2%), "●" = Stable (-2% to +2%).

³Black line is current years data. Based on data availability, red line is historical average (excluding pandemic year).

⁴Data Source: Medical claims data from athenaHealth[®] (www.athenahealth.com). Rate of Flu or ILI visits to Franklin County, OH athenaHealth[®] network primary care practices/physicians. Claims data are subject to filing and processing time lags. Historical data are updated when they are received.

⁵Franklin County, OH residents only (based on zipcode). NOTE: Excludes one hospital system included in the past due to technical changes affecting visit classification assignment and numbers.

⁶Confirmed cases only. Based on jurisdiction equal to Franklin County or City of Columbus and admission date available in ODRS.

CDC 122-Cities Mortality Reporting System: Pneumonia and Influenza (P&I) Mortality

In week 7 of 2016, 4.6% of all Columbus and Franklin County deaths were attributed to pneumonia and influenza. Nationally in week 7, 7.1% of deaths reported were attributed to pneumonia and influenza. This national percentage was below the national epidemic threshold for week 7.

Influenza Morbidity and Influenza-Like Illness (ILI) Reports

In week 7, the preliminary local influenza and influenza-like-illness (ILI) visit rate to athenaHealth® providers (3.3 per 1,000 visits) decreased compared to the previous week and is below its baseline average for the week (Figure 1). The week 7 percentage of all Emergency Department (ED) visits categorized as ILI increased compared to the previous week (Figure 3) and is slightly higher than its historic baseline for the week.

Nationally, during week 7 of 2016, 3.2% of patient visits reported through ILINet were due to influenza-like illness (ILI). The percentage is above the national baseline of 2.1% for week 7.

Laboratory Surveillance

During week 7 of 2016, reporting Franklin County sentinel medical facility laboratories tested 1,300 specimens, with 150 (11.5%) positive (Figure 4). The total number of tests done by local reporting labs from week 35 of 2014 through week 7 of 2016 is 20,850 with 424 (2.0%) positives (361 type A, 59 type B, 4 both A and B, 0 type unknown).

Nationally in week 7 of 2016, clinical laboratories reported 18,844 specimens tested for influenza viruses, 2,599 (13.8%) of which were positive (1,978 type A, 621 type B). Public health laboratories reported testing 1,807 specimens, 892 of which were positive (694 type A – of which 564 were A(H1N1)pdm09, 83 were A/H3, and 47 were not subtyped; 198 type B – of which 34 were Yamagata lineage, 17 were Victoria lineage, and 147 where lineage was not performed). Please visit the CDC website for more information, including cumulative data since week 40.

In week 7 of 2016, participating Ohio clinical labs reported 15,950 specimens tested for influenza this season thus far. Positive results include: (40) A(H1N1)pdm09; (4) A/H3N2; (173) Flu A Not Subtyped, and (33) Flu B (through 2/20/16). ODH Public Health Lab reported 143 specimens tested for influenza from various submitters this season thus far. Positive results include: (34) A(H1N1)pdm09; (3) A/H3N2; (4) Influenza B (through 2/20/16). Please visit the ODH website for more information.

ED Respiratory Visits

In the 7th week of 2016, the percentage of all ED visits categorized as respiratory was stable compared to the percentage seen the previous week and is slightly below its historic baseline for the week (Figure 5).

Over-the-Counter (OTC) Medication Sales

In week 7 of 2016, trends for all of the local over-the-counter medication sales tracked decreased (decrease in cough and cold, electrolyte, thermometer, chest rub, pediatric anti-fever, adult anti-fever, and throat lozenge sales) compared to last week.

Additional Influenza Activity Web Links:

Ohio Seasonal Flu Surveillance: <http://www.odh.ohio.gov/features/odhfeatures/seasflu/ohfluactivity.aspx>

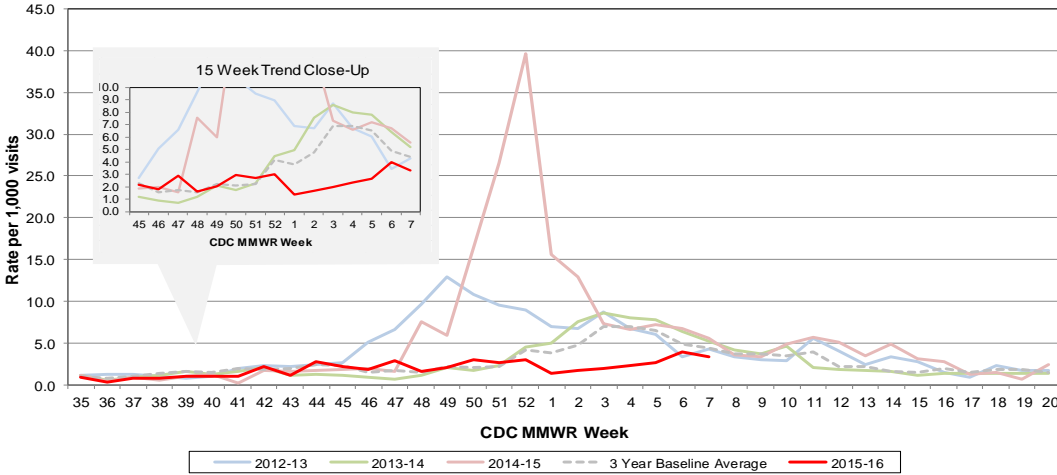
CDC National Seasonal Flu Surveillance Reports: <http://www.cdc.gov/flu/weekly/>

CDC International Flu Activity Map: <http://www.cdc.gov/flu/international/activity.htm>

World Health Organization Situation Updates: http://www.who.int/influenza/surveillance_monitoring/en/

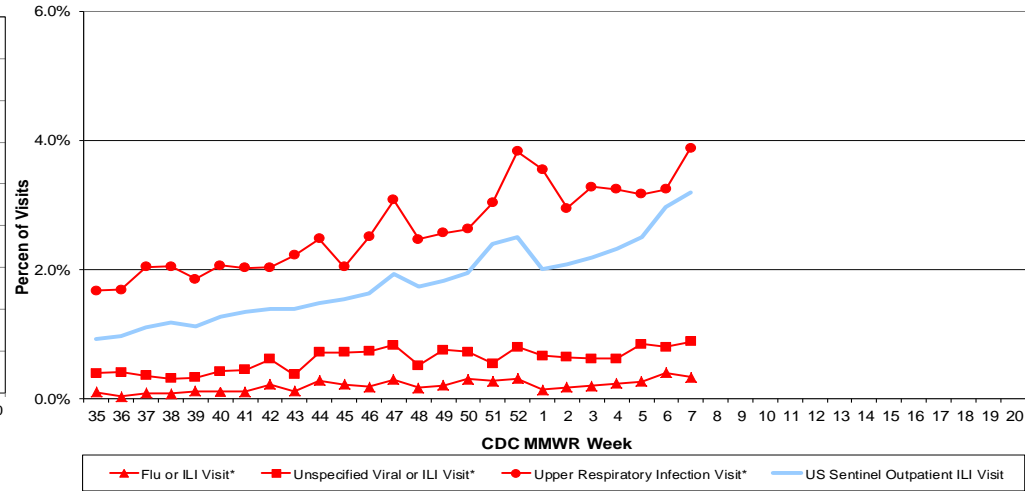
Columbus & Franklin County Influenza Monitoring Summary – Week 7, 2016 (2/14/2016-2/20/2016)

Figure 1: Local Participating Outpatient Primary Care Provider Influenza or Influenza-Like Illness Visit Rate*, Franklin County, OH



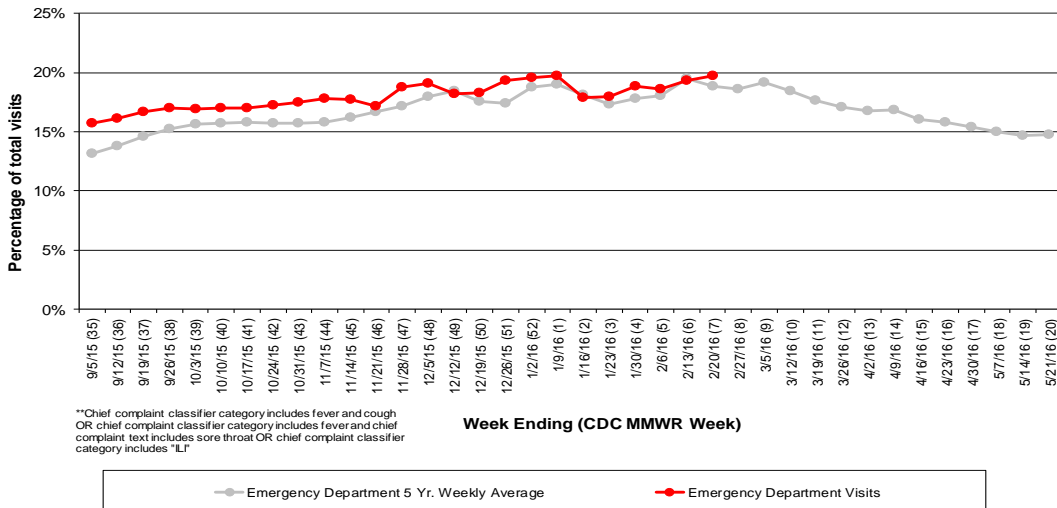
*Source: Medical Claims data from athenaHealth®
 Note: athenaHealth® claims data are subject to filing and processing time lags. Historical data are updated when they are received.

Figure 2: Percentage of Local Outpatient Participating Provider* and CDC National Outpatient Sentinel Health Care Provider Site visits for ILI and Associated Illnesses, 2015-16



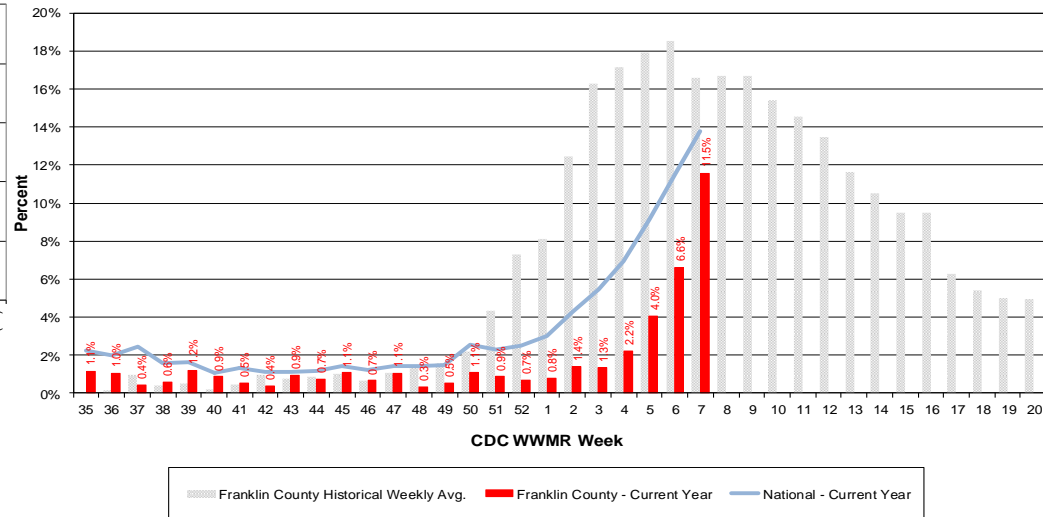
*Source: Local medical claims data provided by athenaHealth®
 Note: athenaHealth® claims data are subject to filing and processing time lags. Historical data are updated when they are received.

Figure 3: Franklin County Resident ILI Defined ED Visits, 2015-16, Franklin County, OH**



**Chief complaint classifier category includes fever and cough
 OR chief complaint classifier category includes fever and chief complaint text includes sore throat OR chief complaint classifier category includes "ILI"

Figure 4: Percentage of Local Reporting and National Laboratory Positive Influenza Tests by Week, 2015-16



Columbus & Franklin County Influenza Monitoring Summary – Week 7, 2016 (2/14/2016-2/20/2016)

Figure 5: Franklin County Resident Respiratory ED Visits, 2015-16, Franklin County, OH

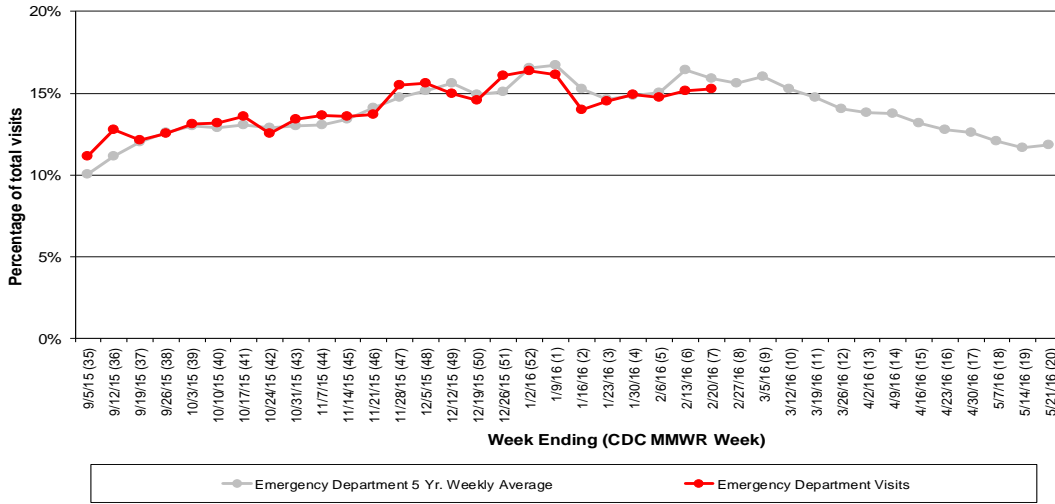


Figure 6: Selected Number of Over-the-Counter Medication Sales, 2015-16, Franklin County, OH

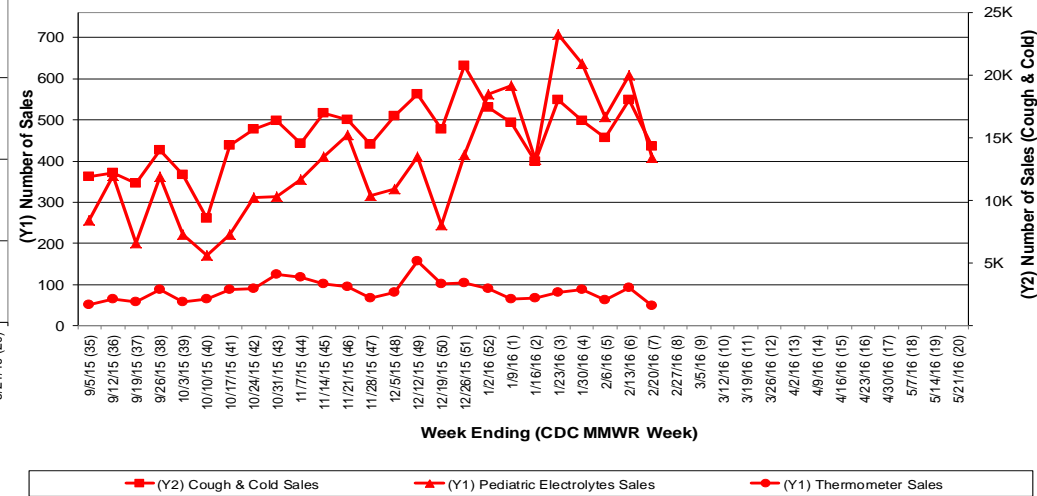
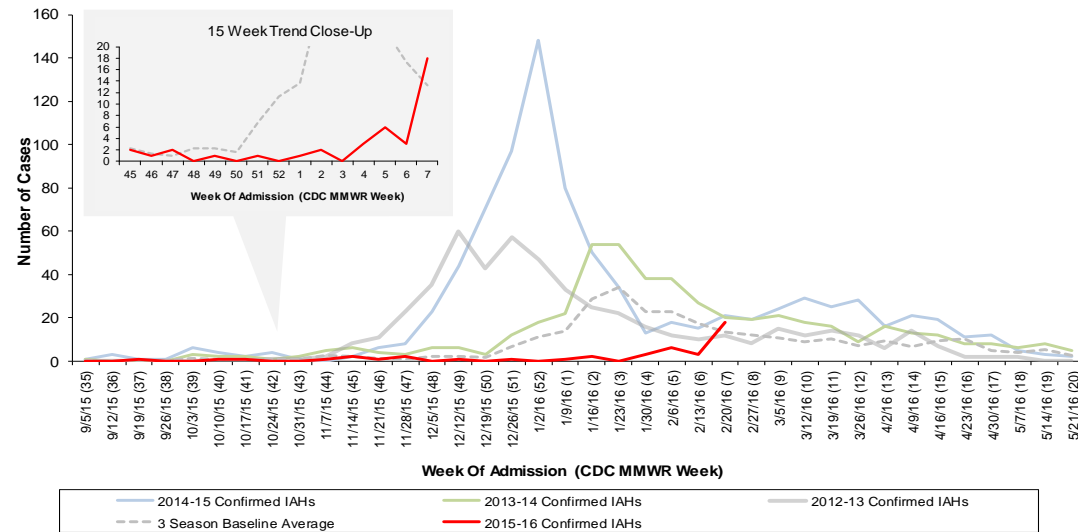


Figure 7: Franklin County Confirmed Influenza Associated Hospitalizations by Hospital Admission Week (As of 9:30 AM, 2/26/2016)



Franklin County, OH, Confirmed Influenza Hospitalization Cumulative Rates (per 100,000) by Age-Group and Admission Week, 2015-2016 Season

