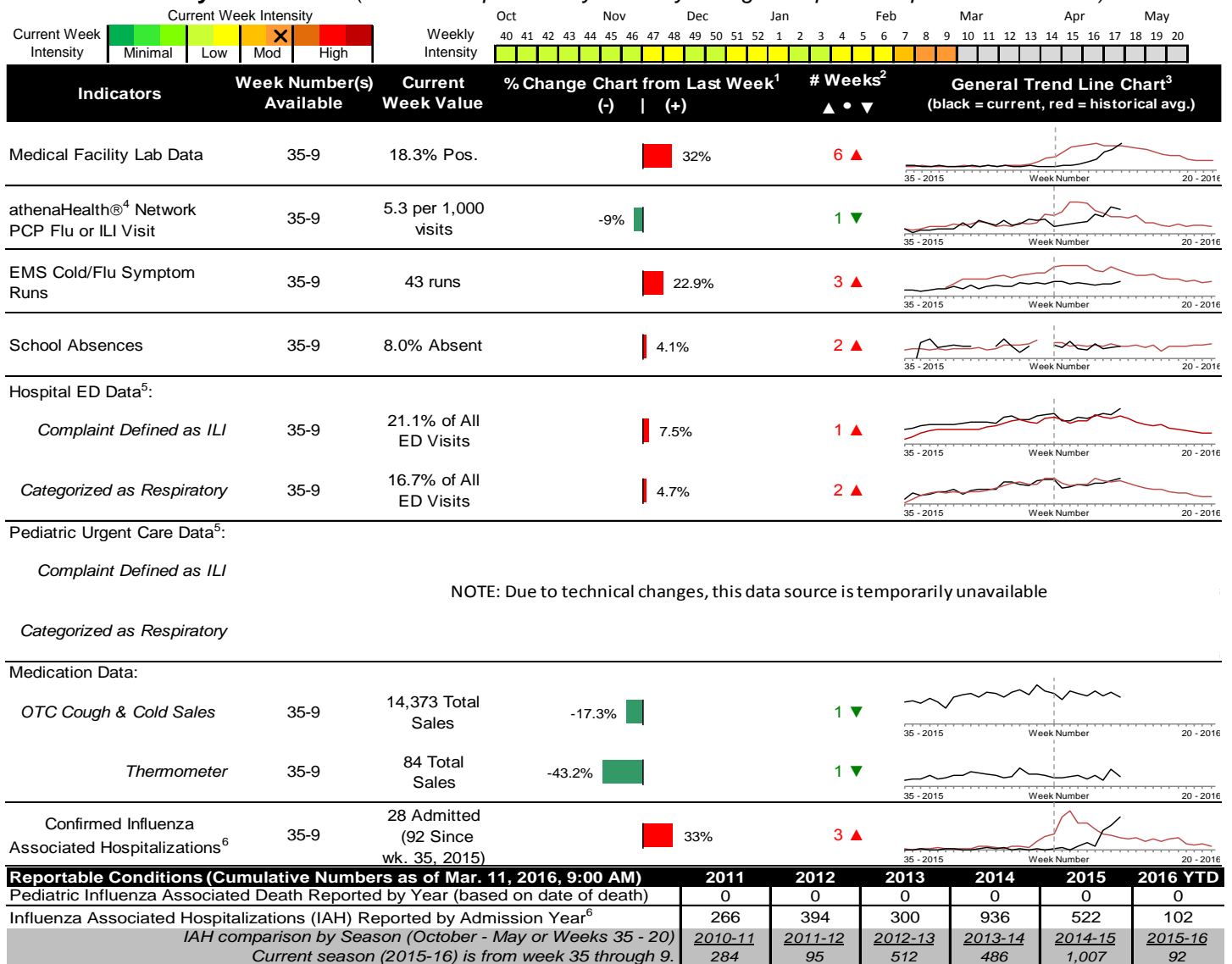


## 2015-2016 Columbus & Franklin County Seasonal Influenza Activity Weekly Summary (Week 9, Feb 28<sup>th</sup>, 2016– Mar 5<sup>th</sup>, 2016)

### Highlights

- In week 9 of 2016, the majority of individual local flu activity indicator trends increased. Overall, flu intensity is moderate for week 9, and continued its increasing trend seen the past few weeks.
- Geographic spread and local intensity designation (Click [here](#) for definitions) = WIDESPREAD, MODERATE
- Local medical facility labs reported 1,517 tests run with 277 (18.3%) positive results for week 9 of 2016. This is higher than last week's 13.8% and is lower than the weekly baseline.
- The percentage of ED visits for both influenza-like-illness (ILI) and respiratory symptoms increased slightly compared to week 8. The percentage of ED visits for both ILI and respiratory symptoms are higher than their respective baseline averages for the week.
- In week 9 of 2016, trends for all of the local over-the-counter medication sales tracked decreased (decrease in cough and cold, electrolyte, thermometer, chest rub, pediatric anti-fever, adult anti-fever, and throat lozenge sales) compared to last week.
- Nationally in week 9, influenza activity remained elevated in the United States. Please [visit the CDC website for specific information](#) (National data is usually updated on Friday of each week).

### Local Flu Activity Dashboard *(All data are preliminary and may change as updated reports are received.)*



<sup>1</sup>Interpret with caution. Indicators with small numbers subject to large weekly percentage fluctuations.

<sup>2</sup>Number of weeks "▲" = Increase (>2%), "▼" = Decrease (>2%), "●" = Stable (-2% to +2%).

<sup>3</sup>Black line is current years data. Based on data availability, red line is historical average (excluding pandemic year).

<sup>4</sup>Data Source: Medical claims data from athenaHealth<sup>®</sup> (www.athenahealth.com). Rate of Flu or ILI visits to Franklin County, OH athenaHealth<sup>®</sup> network primary care practices/physicians. Claims data are subject to filing and processing time lags. Historical data are updated when they are received.

<sup>5</sup>Franklin County, OH residents only (based on zipcode). NOTE: Excludes one hospital system included in the past due to technical changes affecting visit classification assignment and numbers.

<sup>6</sup>Confirmed cases only. Based on jurisdiction equal to Franklin County or City of Columbus and admission date available in ODRS.

### **CDC 122-Cities Mortality Reporting System: Pneumonia and Influenza (P&I) Mortality**

In week 9 of 2016, 3.8% of all Columbus and Franklin County deaths were attributed to pneumonia and influenza. Nationally in week 9, 7.0% of deaths reported were attributed to pneumonia and influenza. This national percentage was above the national epidemic threshold for week 9.

### **Influenza Morbidity and Influenza-Like Illness (ILI) Reports**

In week 9, the preliminary local influenza and influenza-like-illness (ILI) visit rate to athenaHealth® providers (5.3 per 1,000 visits) decreased compared to the previous week and is above its baseline average for the week (Figure 1). The week 9 percentage of all Emergency Department (ED) visits categorized as ILI increased compared to the previous week (Figure 3) and is higher than its historic baseline for the week.

Nationally, during week 9 of 2016, 3.5% of patient visits reported through ILINet were due to influenza-like illness (ILI). The percentage is above the national baseline of 2.1% for week 9.

### **Laboratory Surveillance**

During week 9 of 2016, reporting Franklin County sentinel medical facility laboratories tested 1,517 specimens, with 277 (18.3%) positive (Figure 4). The total number of tests done by local reporting labs from week 35 of 2014 through week 9 of 2016 is 23,698 with 885 (3.7%) positives (781 type A, 100 type B, 4 both A and B, 0 type unknown).

Nationally in week 9 of 2016, clinical laboratories reported 23,910 specimens tested for influenza viruses, 4,918 (20.6%) of which were positive (3,816 type A, 1,102 type B). Public health laboratories reported testing 1,880 specimens, 1,074 of which were positive (810 type A – of which 676 were A(H1N1)pdm09, 66 were A/H3, and 68 were not subtyped; 264 type B – of which 100 were Yamagata lineage, 53 were Victoria lineage, and 111 where lineage was not performed). Please visit the CDC website for more information, including cumulative data since week 40.

In week 9 of 2016, participating Ohio clinical labs reported 17,752 specimens tested for influenza this season thus far. Positive results include: (72) A(H1N1)pdm09; (5) A/H3N2; (479) Flu A Not Subtyped, and (85) Flu B (through 3/5/16). ODH Public Health Lab reported 220 specimens tested for influenza from various submitters this season thus far. Positive results include: (77) A(H1N1)pdm09; (6) A/H3N2; (12) Influenza B (through 3/5/16). Please visit the ODH website for more information.

### **ED Respiratory Visits**

In the 9<sup>th</sup> week of 2016, the percentage of all ED visits categorized as respiratory increased slightly compared to the percentage seen the previous week and is higher than its historic baseline for the week (Figure 5).

### **Over-the-Counter (OTC) Medication Sales**

In week 9 of 2016, trends for all of the local over-the-counter medication sales tracked decreased (decrease in cough and cold, electrolyte, thermometer, chest rub, pediatric anti-fever, adult anti-fever, and throat lozenge sales) compared to last week.

### **Additional Influenza Activity Web Links:**

Ohio Seasonal Flu Surveillance: <http://www.odh.ohio.gov/features/odhfeatures/seasflu/ohfluactivity.aspx>

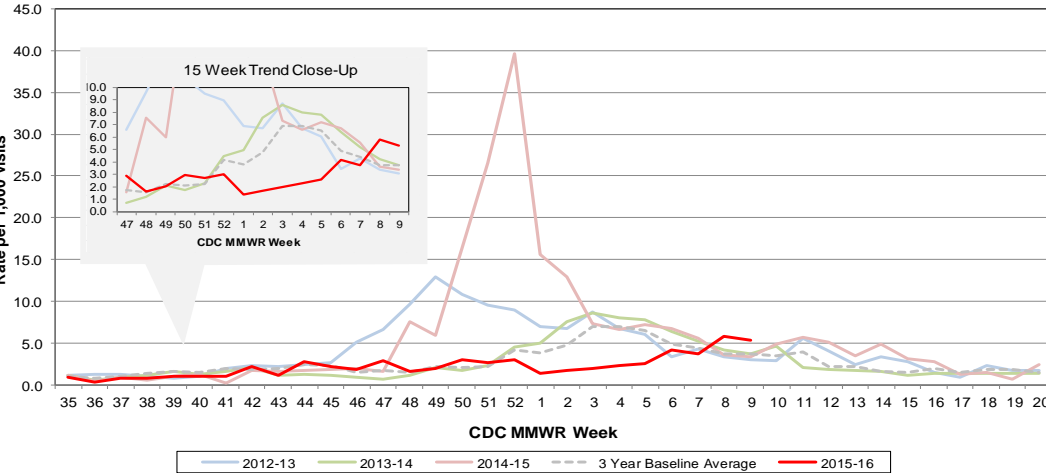
CDC National Seasonal Flu Surveillance Reports: <http://www.cdc.gov/flu/weekly/>

CDC International Flu Activity Map: <http://www.cdc.gov/flu/international/activity.htm>

World Health Organization Situation Updates: [http://www.who.int/influenza/surveillance\\_monitoring/en/](http://www.who.int/influenza/surveillance_monitoring/en/)

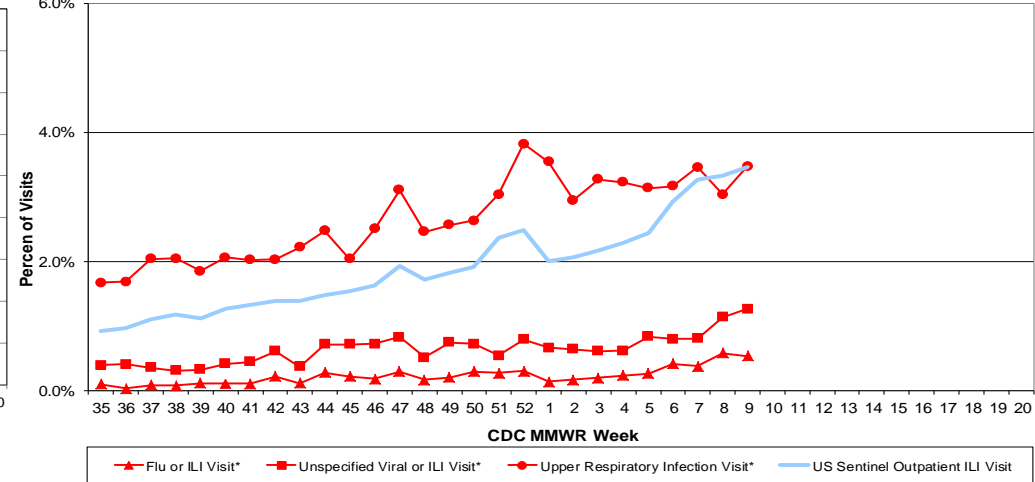
Columbus & Franklin County Influenza Monitoring Summary – Week 9, 2016 (2/28/2016-3/5/2016)

**Figure 1: Local Participating Outpatient Primary Care Provider Influenza or Influenza-Like Illness Visit Rate<sup>1</sup>, Franklin County, OH**



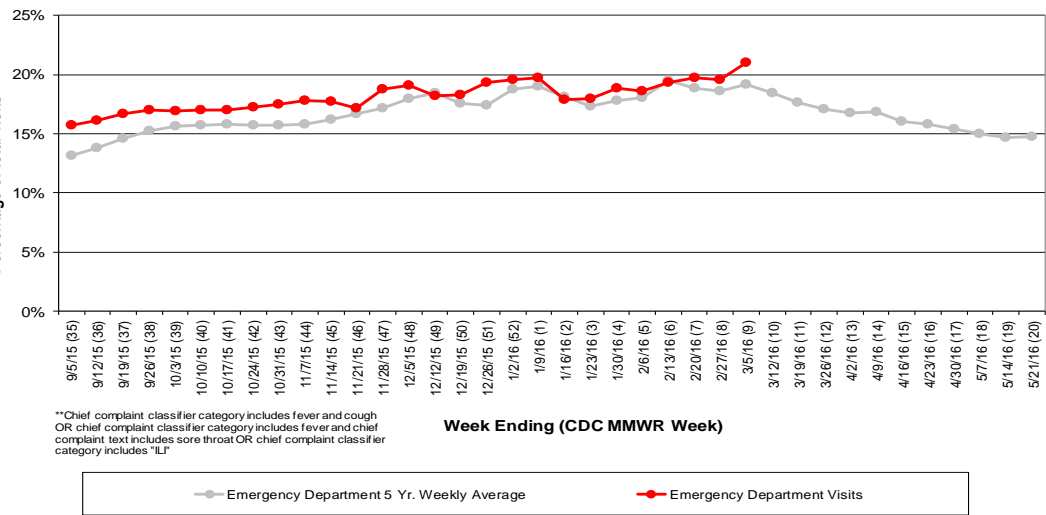
\*Source: Medical Claims data from athenaHealth®  
 Note: athenaHealth® claims data are subject to filing and processing time lags. Historical data are updated when they are received.

**Figure 2: Percentage of Local Outpatient Participating Provider\* and CDC National Outpatient Sentinel Health Care Provider Site visits for ILI and Associated Illnesses, 2015-16**



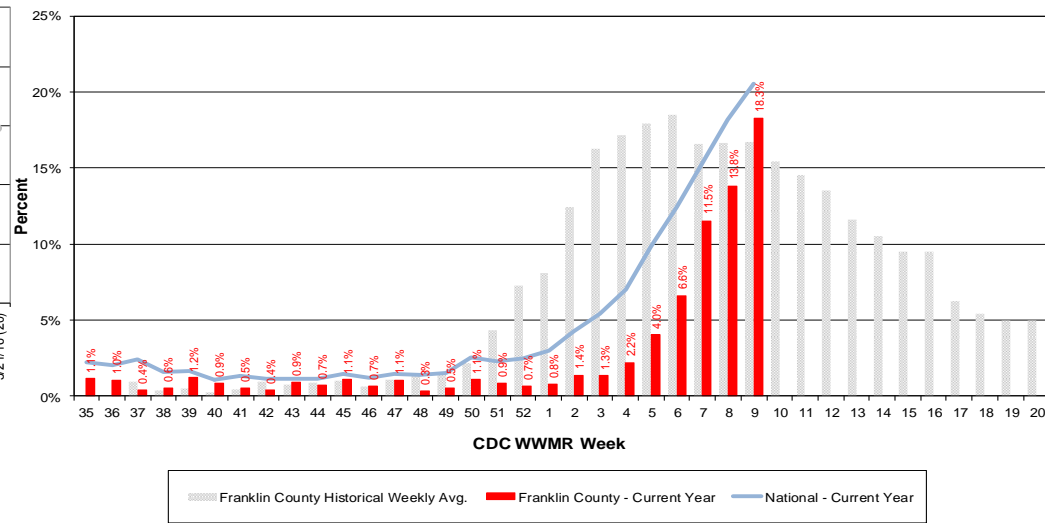
\*Source: Local medical claims data provided by athenaHealth®  
 Note: athenaHealth® claims data are subject to filing and processing time lags. Historical data are updated when they are received.

**Figure 3: Franklin County Resident ILI Defined\*\* ED Visits, 2015-16, Franklin County, OH**



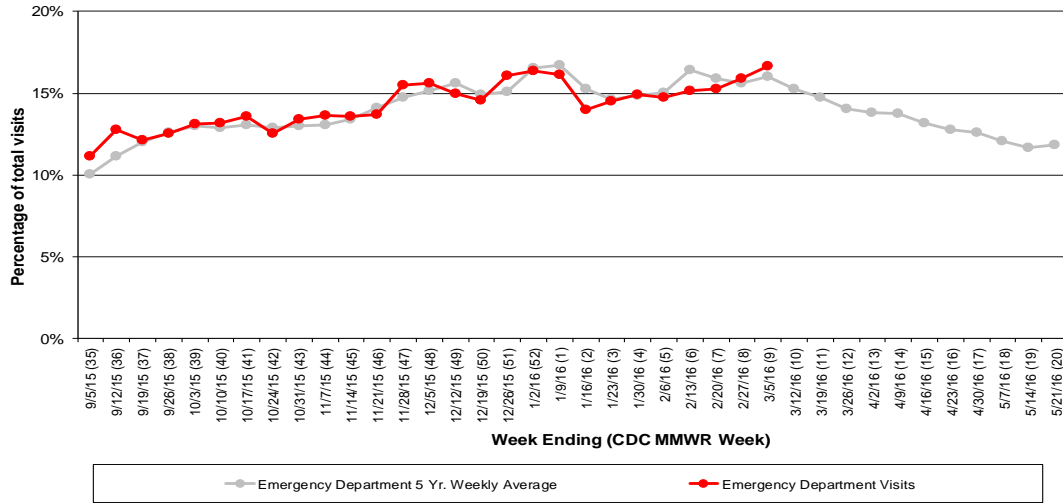
\*\*Chief complaint classifier category includes fever and cough OR chief complaint classifier category includes fever and chief complaint text includes sore throat OR chief complaint classifier category includes "ILI"

**Figure 4: Percentage of Local Reporting and National Laboratory Positive Influenza Tests by Week, 2015-16**

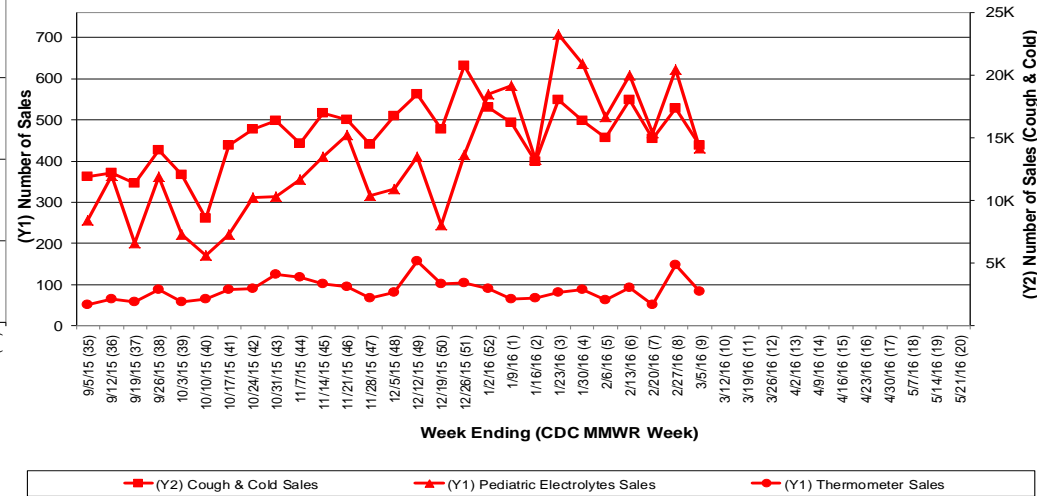


# Columbus & Franklin County Influenza Monitoring Summary – Week 9, 2016 (2/28/2016-3/5/2016)

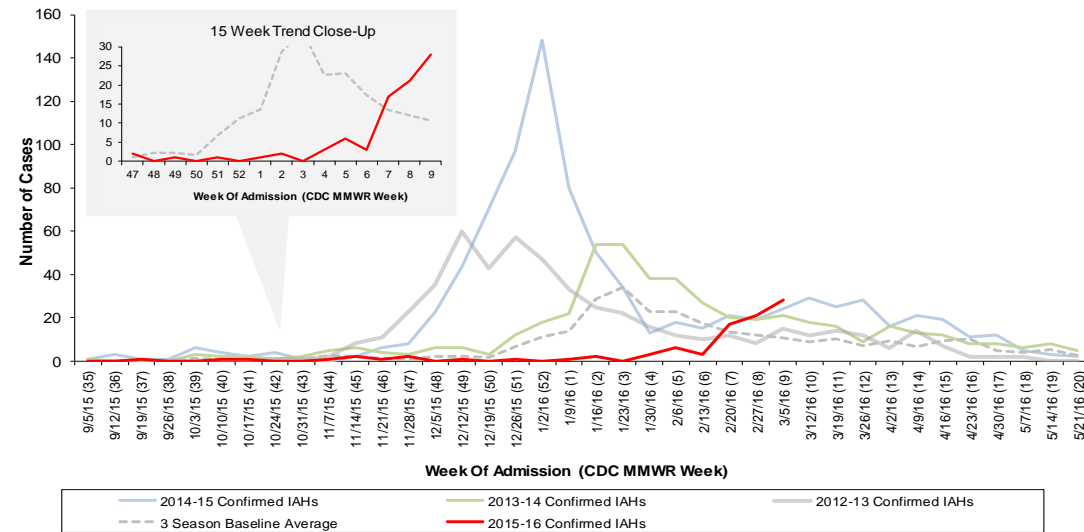
**Figure 5: Franklin County Resident Respiratory ED Visits, 2015-16, Franklin County, OH**



**Figure 6: Selected Number of Over-the-Counter Medication Sales, 2015-16, Franklin County, OH**



**Figure 7: Franklin County Confirmed Influenza Associated Hospitalizations by Hospital Admission Week (As of 9:00 AM, 3/11/2016)**



**Franklin County, OH, Confirmed Influenza Hospitalization Cumulative Rates (per 100,000) by Age-Group and Admission Week, 2015-2016 Season**

