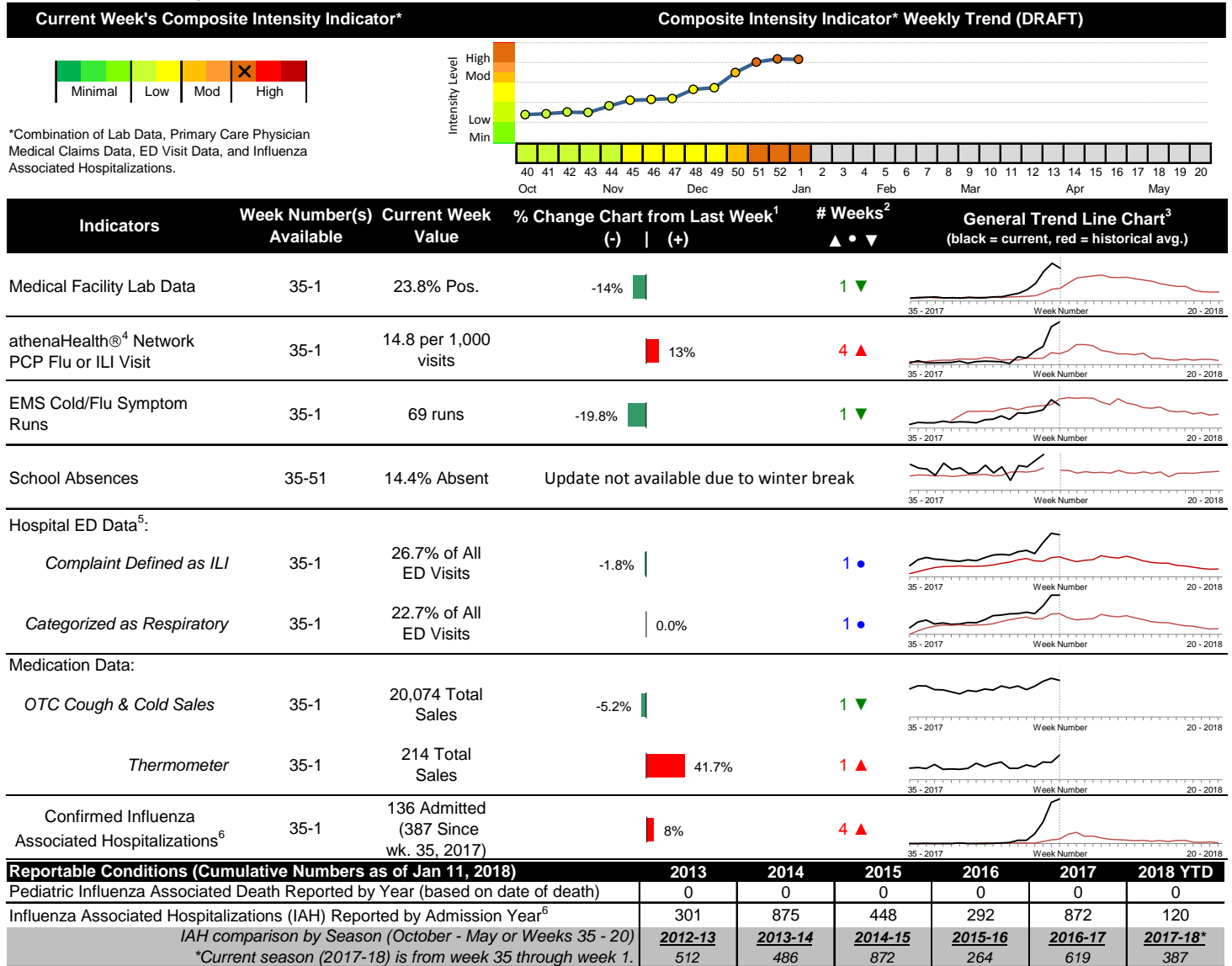


Highlights

- In week 1 of 2018, individual local flu activity indicator values were mixed compared to last week. Influenza-associated hospitalizations and outpatient visits continue to rise. As a whole, flu intensity (composite indicator) continues to be high.
- Geographic spread and local intensity designation (Click [here](#) for definitions) = WIDESPREAD, HIGH
- Local medical facility labs reported 3,759 tests run with 894 (23.8%) positive results for week 1 of 2018.
- The percentage of ED visits for both influenza-like-illness (ILI) and respiratory symptoms were stable compared to last week. The percentage of ED visits for both ILI and respiratory symptoms continue to be above their respective baseline averages for the week.
- In week 1 of 2018, trends for local over-the-counter medication category sales tracked were mixed (increase in thermometer, chest rub, pediatric anti-fever, and adult anti-fever sales; decrease in cough and cold, electrolyte, and throat lozenge sales) compared to last week.
- Nationally, influenza activity increased in week 1 of 2018. Please [visit the CDC website for specific information](#) (National data is usually updated on Friday of each week).

Local Flu Activity Dashboard (All data are preliminary and may change as updated reports are received.)



¹Interpret with caution. Indicators with small numbers subject to large weekly percentage fluctuations.

²Number of weeks "▲" = Increase (>2%), "▼" = Decrease (>2%), "•" = Stable (-2% to +2%).

³Black line is current years data. Based on data availability, red line is historical average (excluding pandemic year).

⁴Data Source: Medical claims data from athenaHealth® (www.athenahealth.com). Rate of Flu or ILI visits to Franklin County, OH athenaHealth® network primary care practices/physicians. Claims data are subject to filing and processing time lags. Historical data are updated when they are received.

⁵Franklin County, OH residents only (based on zipcode). NOTE: Excludes one hospital system included in the past due to technical changes affecting visit classification assignment and numbers.

⁶Confirmed cases only. Based on jurisdiction equal to Franklin County or City of Columbus and admission date available in ODRS.

Influenza Morbidity and Influenza-Like Illness (ILI) Reports

In week 1, the preliminary local influenza and influenza-like-illness (ILI) visit rate to athenaHealth® providers (14.8 per 1,000 visits) increased compared to the previous week and is above its baseline average for the week (Figure 1). The week 1 percentage of all Emergency Department (ED) visits categorized as ILI was stable compared to the previous week (Figure 3) and is above its historic baseline for the week.

Nationally, during week 1 of 2018, 5.8% of patient visits reported through ILINet were due to influenza-like illness (ILI). The percentage is above the national baseline of 2.2% for week 1.

Laboratory Surveillance

During week 1 of 2018, reporting Franklin County sentinel medical facility laboratories tested 3,759 specimens, with 894 (23.8%) positive (Figure 4). The total number of tests done by local reporting labs from week 35 of 2017 through week 1 of 2018 is 23,657 with 2,661 (11.3%) positives (2,401 type A, 258 type B, 1 type A and B, 1 type unknown).

Nationally in week 1 of 2018, clinical laboratories reported 41,712 specimens tested for influenza viruses, 10,320 (24.7%) of which were positive (8,628 type A, 1,692 type B). Public health laboratories reported testing 2,401 specimens, 1,398 of which were positive (1,202 type A – of which 132 were A(H1N1)pdm09, 1,021 were A/H3, and 49 were not subtyped; 196 type B – of which 95 were Yamagata lineage, 8 were Victoria lineage, and 93 where lineage was not performed). Please visit the CDC website for more information, including cumulative data.

Updated week 1 of 2018 Ohio Department of Health Lab data was not available at the time of this report. In week 52, Ohio clinical labs reported 22,253 specimens tested for influenza this season thus far. Positive results include: (10) A(H1N1)pdm09; (101) A/H3N2; (1,893) Flu A Not Subtyped, and (191) Flu B (through 12/30/17). In week 52, ODH Public Health Lab reported 274 specimens tested for influenza from various submitters this season thus far. Positive results include: (19) A(H1N1)pdm09; (213) A/H3N2; (9) Influenza B (through 12/30/17). Please visit the ODH website for more information.

ED Respiratory Visits

In the 1st week of 2018, the percentage of all ED visits categorized as respiratory was stable compared to the percentage seen the previous week and is above its historic baseline for the week (Figure 5).

Over-the-Counter (OTC) Medication Sales

In week 1 of 2018, trends for local over-the-counter medication category sales tracked were mixed (increase in thermometer, chest rub, pediatric anti-fever, and adult anti-fever sales; decrease in cough and cold, electrolyte, and throat lozenge sales) compared to last week.

Additional Influenza Activity Web Links:

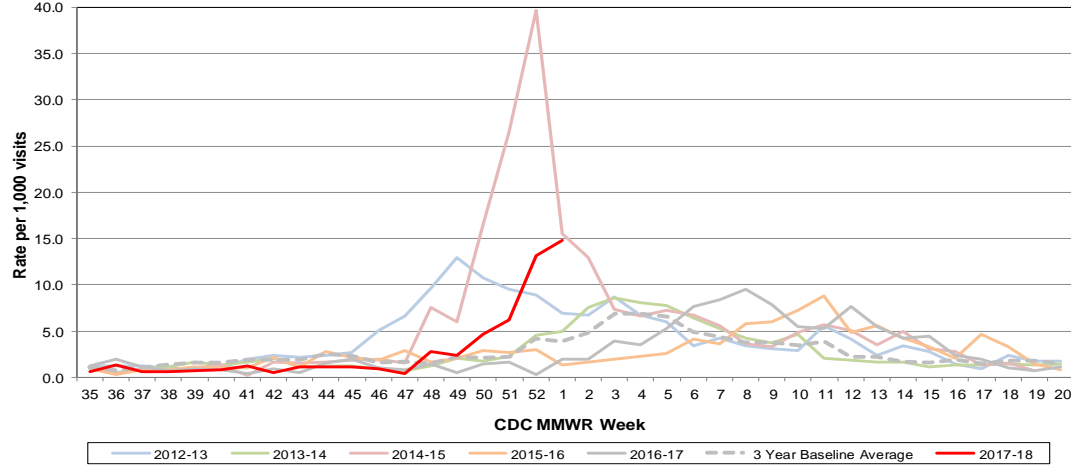
Ohio Seasonal Flu Surveillance: <http://www.odh.ohio.gov/seasflu/Ohio%20Flu%20Activity.aspx>

CDC National Seasonal Flu Surveillance Reports: <http://www.cdc.gov/flu/weekly/>

World Health Organization Situation Updates: http://www.who.int/influenza/surveillance_monitoring/en/

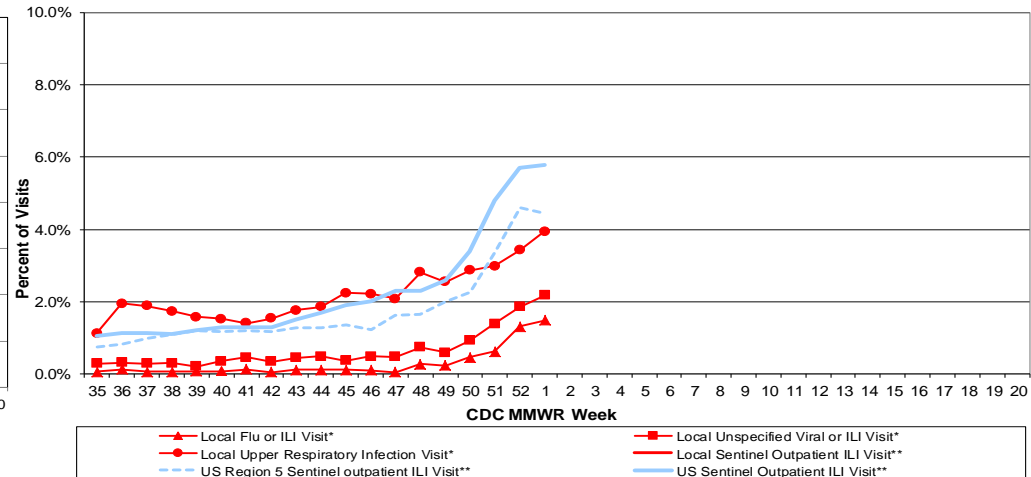
Columbus & Franklin County Influenza Monitoring Summary – Week 1, 2018 (12/31/2017-1/6/2018)

Figure 1: Local Participating Outpatient Primary Care Provider Influenza or Influenza-Like Illness Visit Rate*, Franklin County, OH



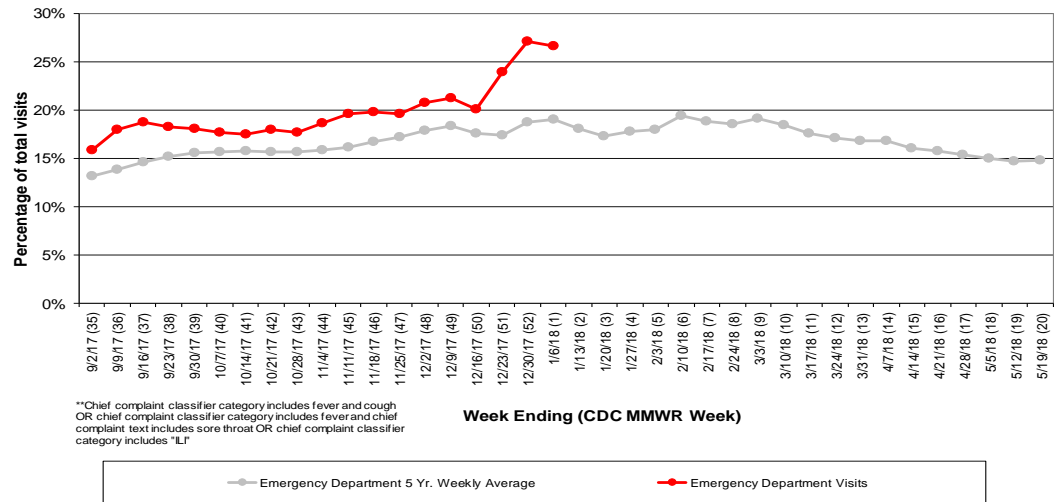
*Source: Medical Claims data from athenaHealth®
 Note: athenaHealth® claims data are subject to filing and processing time lags. Historical data are updated when they are received.

Figure 2: Percentage of Local Outpatient Participating Provider* and CDC National Outpatient Sentinel Health Care Provider Site visits for ILI and Associated Illnesses, 2017-18**



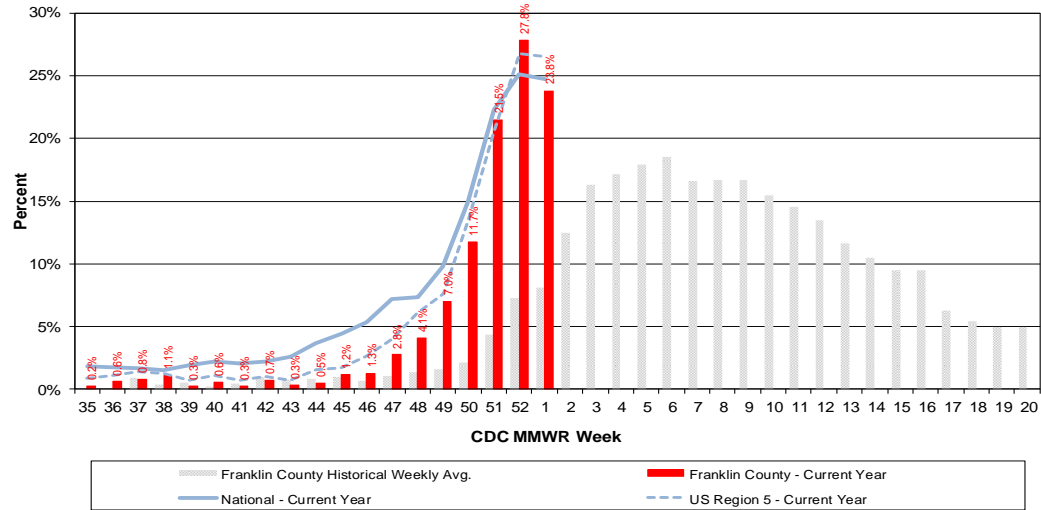
*Source: Local medical claims data provided by athenaHealth®. Data are subject to filing and processing time lags. Historical data are updated when received.
 **Source: U.S. Outpatient Influenza-like Illness Surveillance Network (ILINet) sentinel provider visits

Figure 3: Franklin County Resident ILI Defined ED Visits, 2017-18, Franklin County, OH**



**Chief complaint classifier category includes fever and cough OR chief complaint classifier category includes fever and chief complaint text includes sore throat OR chief complaint classifier category includes "ILI"

Figure 4: Percentage of Local Reporting and National Laboratory Positive Influenza Tests by Week, 2017-18



Columbus & Franklin County Influenza Monitoring Summary – Week 1, 2018 (12/31/2017-1/6/2018)

Figure 5: Franklin County Resident Respiratory ED Visits, 2017-18, Franklin County, OH

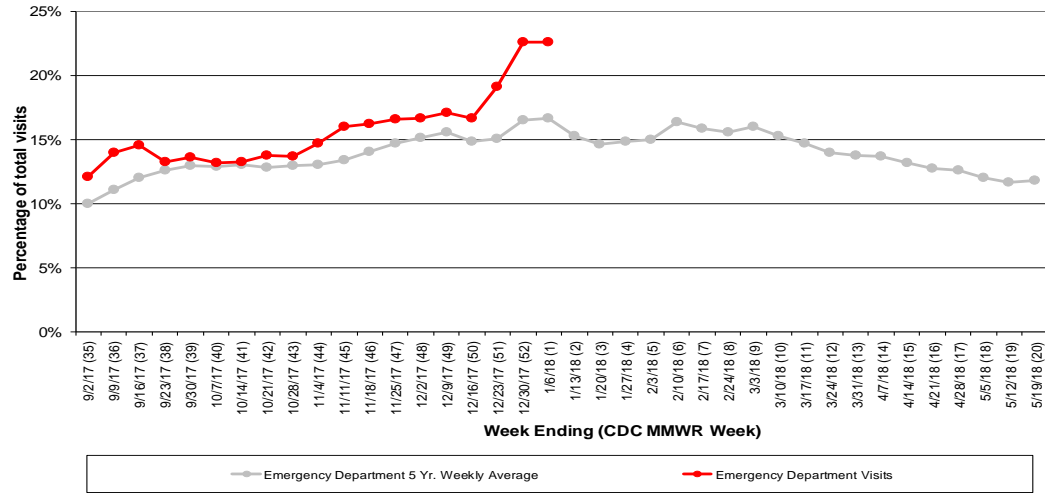


Figure 6: Selected Number of Over-the-Counter Medication Sales, 2017-18, Franklin County, OH

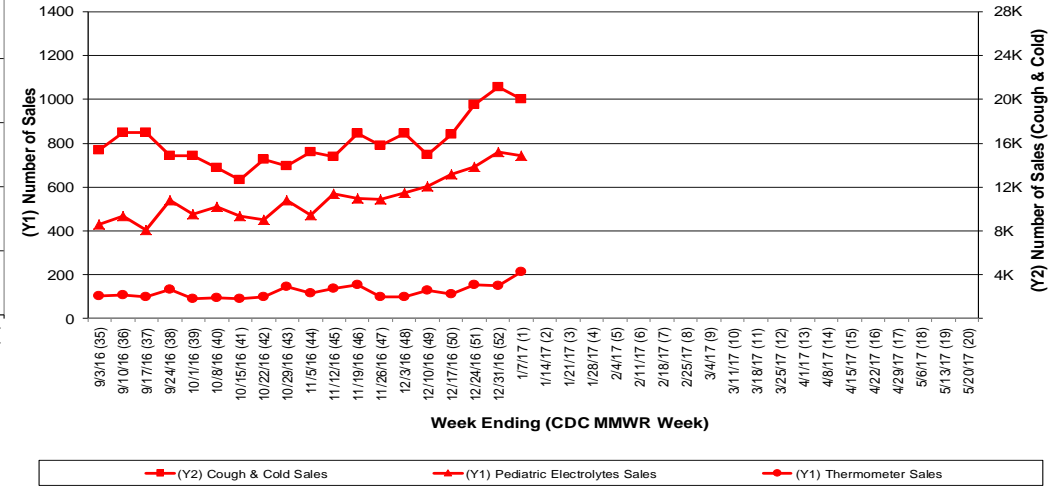
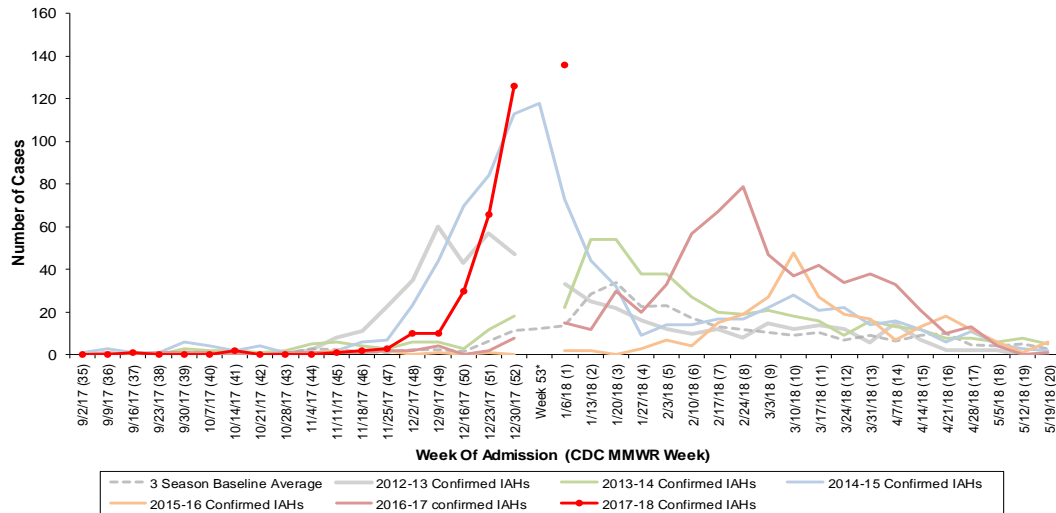


Figure 7: Franklin County Confirmed Influenza Associated Hospitalizations by Hospital Admission Week (As of 1/11/2018)



*Note: Certain years have a 53rd week (e.g., season 2014-15) based on CDCs MMWR Weeks.

Franklin County, OH, Confirmed Influenza Hospitalization Cumulative Rates (per 100,000) by Age-Group and Admission Week, 2017-2018 Season

