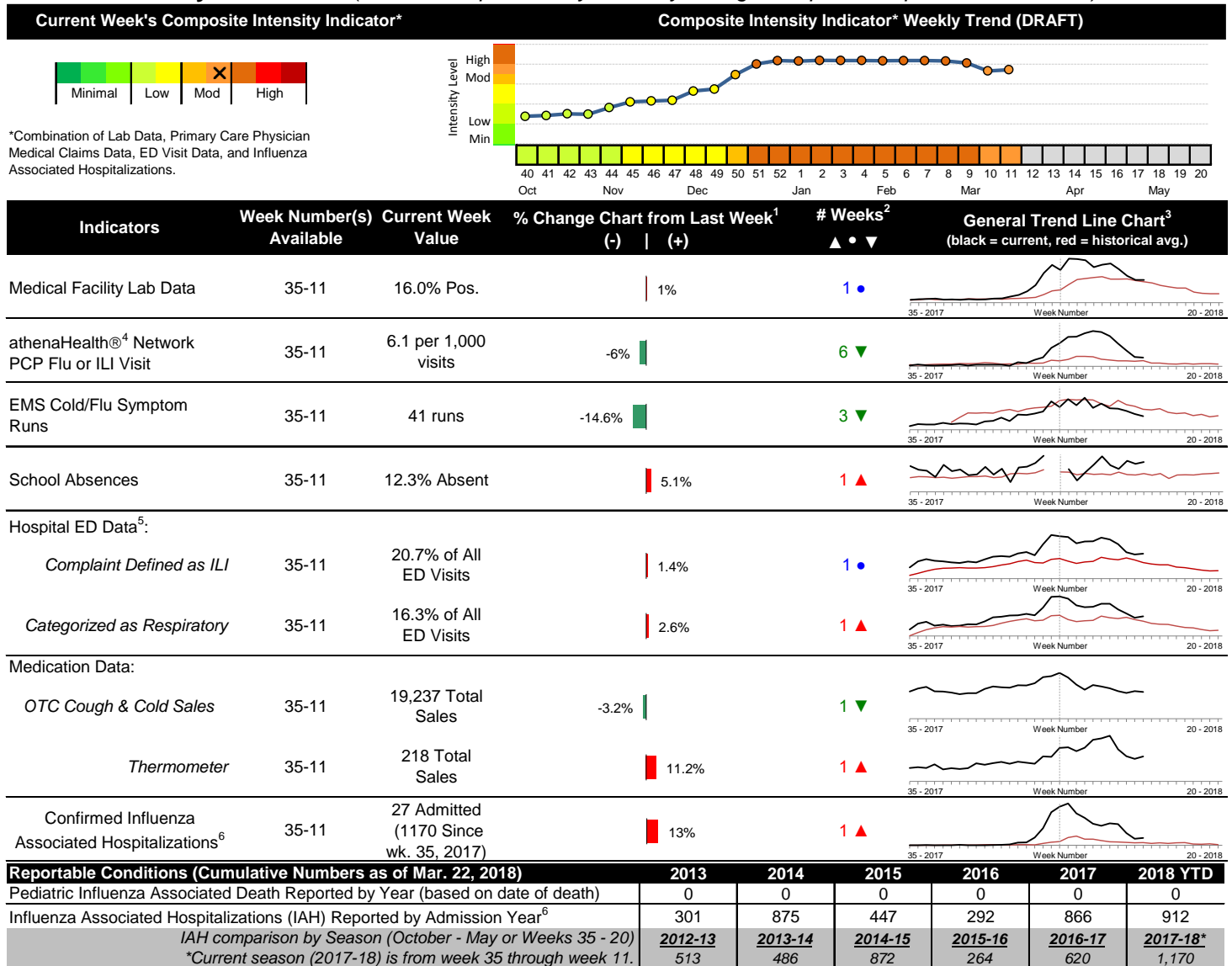


2017-2018 Columbus & Franklin County Seasonal Influenza Activity Weekly Summary (Week 11, Mar. 11th, 2018– Mar. 17th, 2018)

Highlights

- In week 11 of 2018, the trends for individual preliminary local flu activity indicators were mixed. As a whole, flu intensity (composite indicator) increased slightly but remained at moderate.
- Geographic spread and local intensity designation (Click [here](#) for definitions) = WIDESPREAD, MODERATE
- Local medical facility labs reported 1,637 tests run with 262 (16.0%) positive results for week 11 of 2018.
- The percentage of ED visits for influenza-like-illness (ILI) was stable, while respiratory symptom visits increased slightly compared to last week. The percentage of ED visits for ILI is above while respiratory symptom visits is slightly above their respective baseline averages for the week.
- In week 11 of 2018, trends for local over-the-counter medication category sales tracked were mixed (decrease in cough and cold, chest rub, adult anti-fever, and throat lozenge sales; increase in electrolyte and thermometer sales; stable pediatric anti-fever sales) compared to last week.
- Nationally, influenza activity decreased. Please [visit the CDC website for specific information](#) (National data is usually updated on Friday of each week).

Local Flu Activity Dashboard *(All data are preliminary and may change as updated reports are received.)*



¹Interpret with caution. Indicators with small numbers subject to large weekly percentage fluctuations.

²Number of weeks "▲" = Increase (>2%), "▼" = Decrease (>2%), "•" = Stable (-2% to +2%).

³Black line is current years data. Based on data availability, red line is historical average (excluding pandemic year).

⁴Data Source: Medical claims data from athenaHealth® (www.athenahealth.com). Rate of Flu or ILI visits to Franklin County, OH athenaHealth® network primary care practices/physicians. Claims data are subject to filing and processing time lags. Historical data are updated when they are received.

⁵Franklin County, OH residents only (based on zipcode). NOTE: Excludes one hospital system included in the past due to technical changes affecting visit classification assignment and numbers.

⁶Confirmed cases only. Based on jurisdiction equal to Franklin County or City of Columbus and admission date available in ODRS.

Influenza Morbidity and Influenza-Like Illness (ILI) Reports

In week 11, the preliminary local influenza and influenza-like-illness (ILI) visit rate to athenaHealth® providers (6.1 per 1,000 visits) decreased compared to the previous week and is above its baseline average for the week (Figure 1). The week 11 percentage of all Emergency Department (ED) visits categorized as ILI was stable compared to the previous week (Figure 3) and is above its historic baseline for the week.

Nationally, during week 11 of 2018, 2.7% of patient visits reported through ILINet were due to influenza-like illness (ILI). The percentage is above the national baseline of 2.2% for week 11.

Laboratory Surveillance

During week 11 of 2018, reporting Franklin County sentinel medical facility laboratories tested 1,637 specimens, with 262 (16.0%) positive (Figure 4). The total number of tests done by local reporting labs from week 35 of 2017 through week 11 of 2018 is 54,519 with 10,981 (20.1%) positives (8,206 type A, 2,767 type B, 7 type A and B, 1 type unknown).

Nationally in week 11 of 2018, clinical laboratories reported 28,213 specimens tested for influenza viruses, 4,326 (15.3%) of which were positive (1,828 type A, 2,498 type B). Public health laboratories reported testing 896 specimens, 433 of which were positive (184 type A – of which 67 were A(H1N1)pdm09, 100 were H3N2, and 17 were not subtyped; 249 type B – of which 147 were Yamagata lineage, 22 were Victoria lineage, and 80 where lineage was not performed). Please visit the CDC website for more information, including cumulative data.

In week 11, Ohio clinical labs reported 65,180 specimens tested for influenza this season thus far. Positive results include: (173) A(H1N1)pdm09; (593) A/H3N2; (10,498) Flu A Not Subtyped, and (3,012) Flu B (through 3/17/18). In week 11, ODH Public Health Lab reported 1,138 specimens tested for influenza from various submitters this season thus far. Positive results include: (101) A(H1N1)pdm09; (681) A/H3N2; (141) Influenza B (through 3/17/18). Please visit the ODH website for more information.

ED Respiratory Visits

In the 11th week of 2018, the percentage of all ED visits categorized as respiratory increased slightly compared to the percentage seen the previous week and is above its historic baseline for the week (Figure 5).

Over-the-Counter (OTC) Medication Sales

In week 11 of 2018, trends for local over-the-counter medication category sales tracked were mixed (decrease in cough and cold, chest rub, adult anti-fever, and throat lozenge sales; increase in electrolyte and thermometer sales; stable pediatric anti-fever sales) compared to last week.

Additional Influenza Activity Web Links:

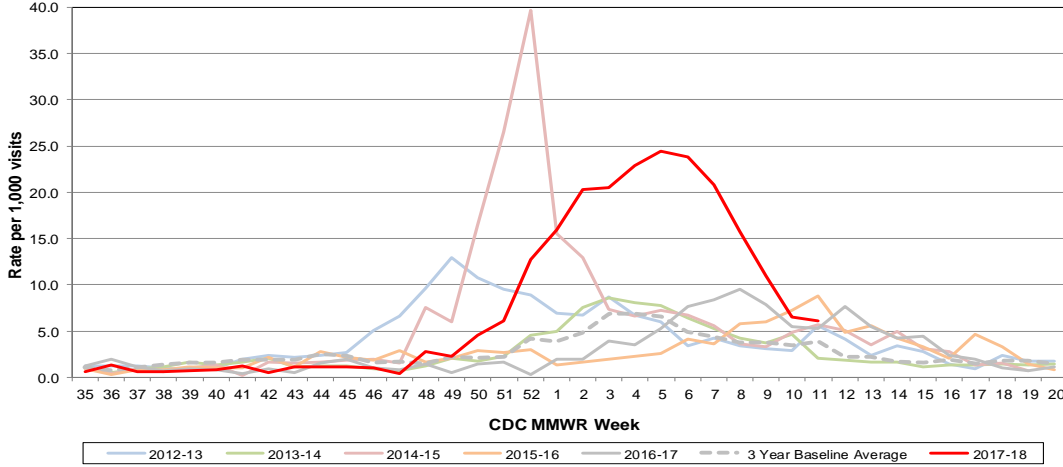
Ohio Seasonal Flu Surveillance: <http://www.odh.ohio.gov/seasflu/Ohio%20Flu%20Activity.aspx>

CDC National Seasonal Flu Surveillance Reports: <http://www.cdc.gov/flu/weekly/>

World Health Organization Situation Updates: http://www.who.int/influenza/surveillance_monitoring/en/

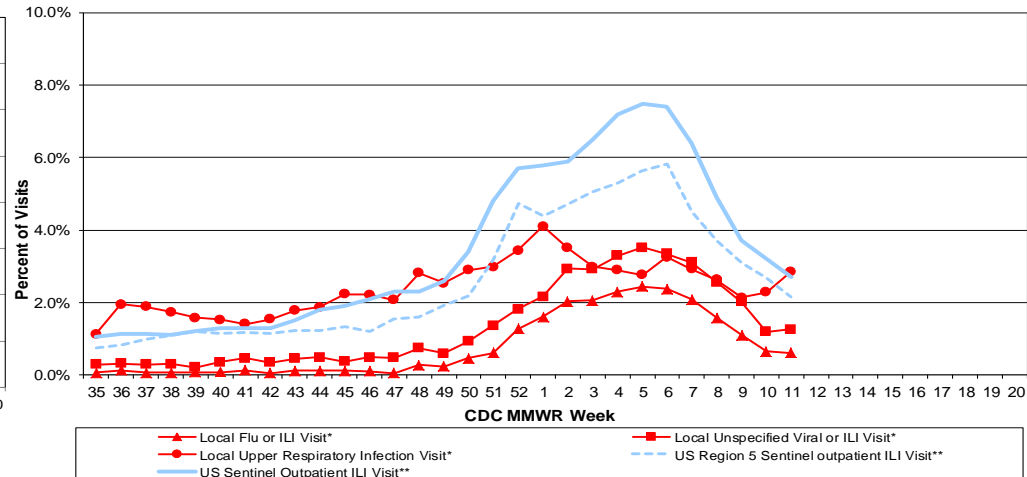
Columbus & Franklin County Influenza Monitoring Summary – Week 11, 2018 (3/11/2018-3/17/2018)

Figure 1: Local Participating Outpatient Primary Care Provider Influenza or Influenza-Like Illness Visit Rate*, Franklin County, OH



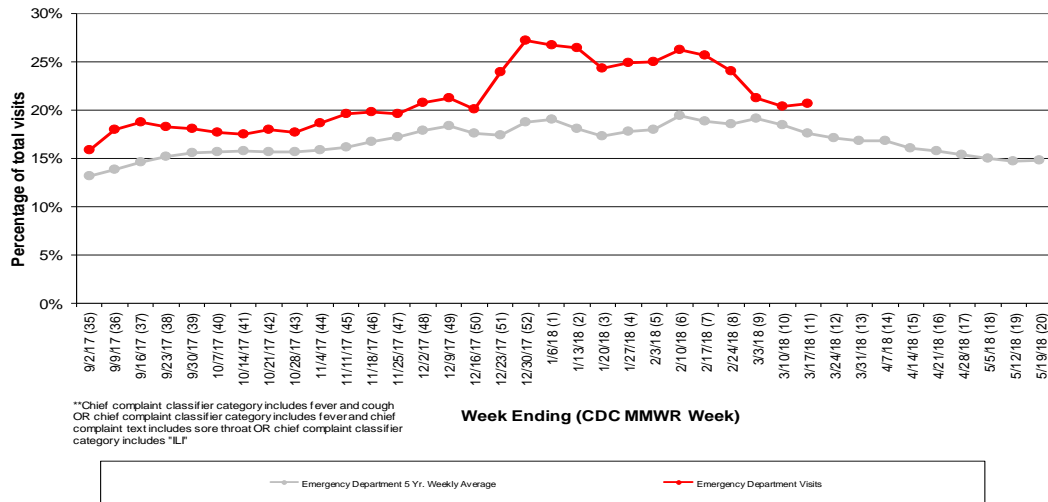
*Source: Medical Claims data from athenaHealth®
 Note: athenaHealth® claims data are subject to filing and processing time lags. Historical data are updated when they are received.

Figure 2: Percentage of Local Outpatient Participating Provider* visits for ILI and Associated Illnesses, 2017-18



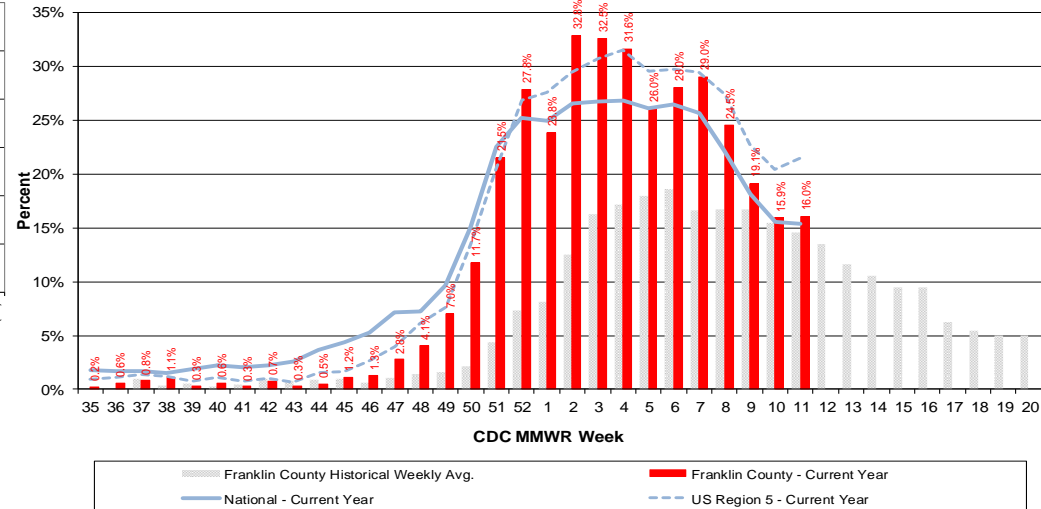
*Source: Local medical claims data provided by athenaHealth®. Data are subject to filing and processing time lags. Historical data are updated when received.

Figure 3: Franklin County Resident ILI Defined ED Visits, 2017-18, Franklin County, OH**



**Chief complaint classifier category includes fever and cough
 OR chief complaint classifier category includes fever and chief complaint text includes sore throat OR chief complaint classifier category includes "ILI"

Figure 4: Percentage of Local Reporting and National Laboratory Positive Influenza Tests by Week, 2017-18



Columbus & Franklin County Influenza Monitoring Summary – Week 11, 2018 (3/11/2018-3/17/2018)

Figure 5: Franklin County Resident Respiratory ED Visits, 2017-18, Franklin County, OH

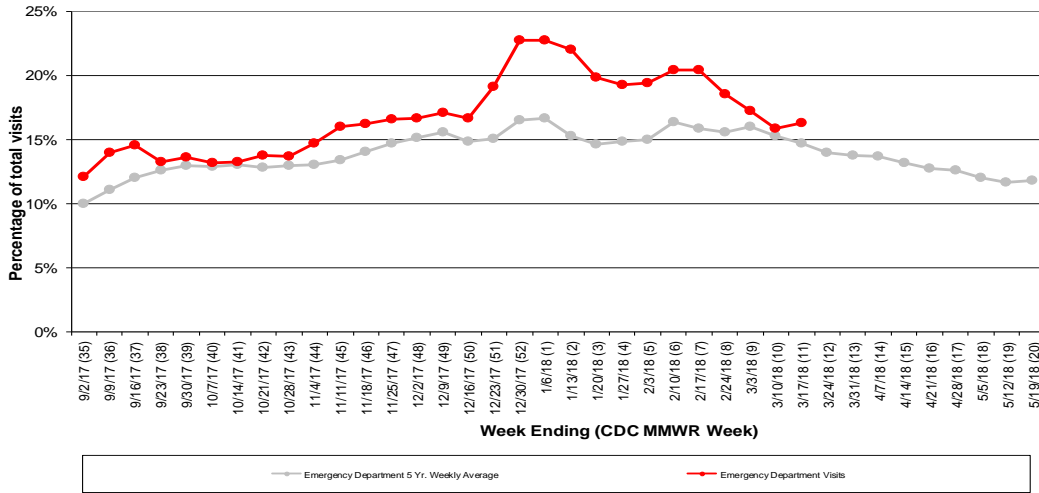


Figure 6: Selected Number of Over-the-Counter Medication Total Sales, 2017-18, Franklin County, OH

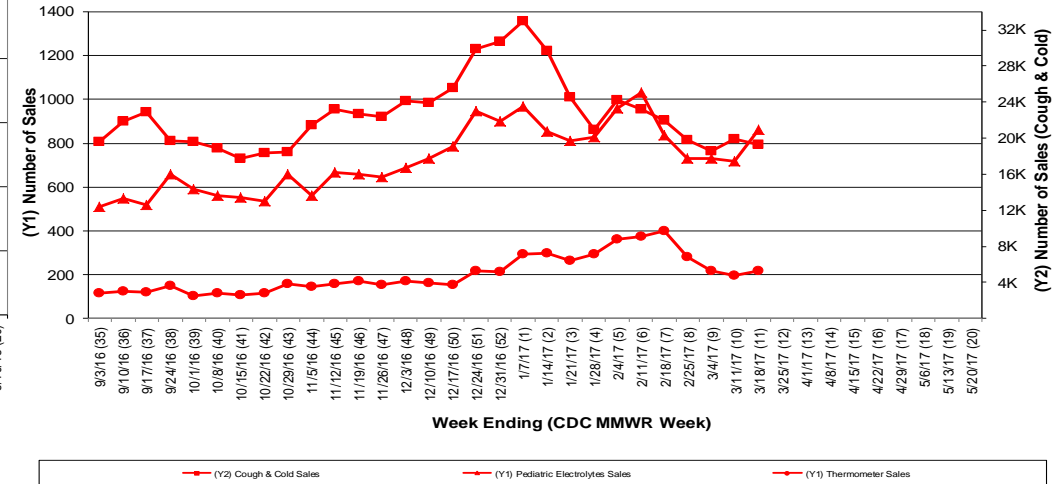
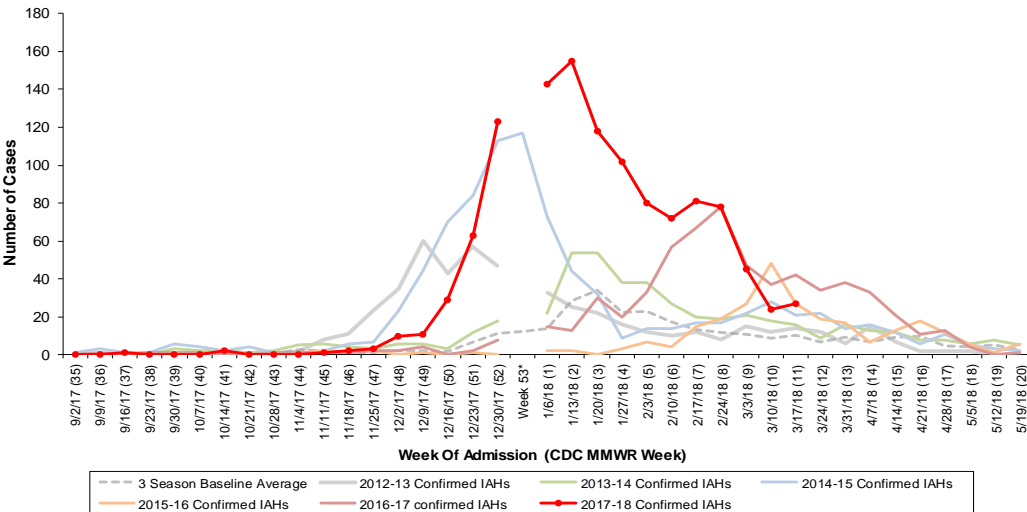
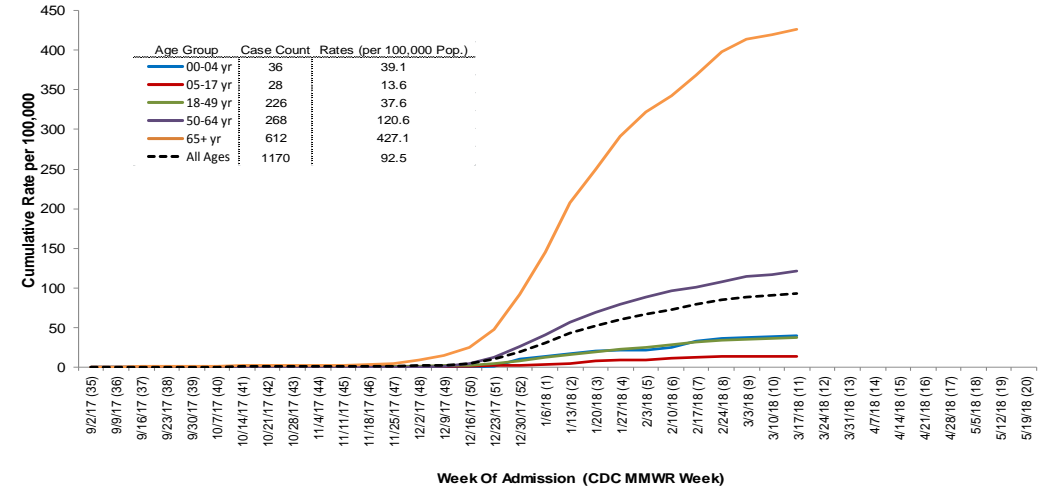


Figure 7: Columbus and Franklin County Jurisdiction Confirmed Influenza Associated Hospitalizations by Hospital Admission Week (As of 3/22/2018)



Columbus and Franklin County, OH Jurisdiction Confirmed Influenza Hospitalization Cumulative Rates (per 100,000) by Age-Group and Admission Week, 2017-2018 Season



*Note: Certain years have a 53rd week (e.g., season 2014-15) based on CDC's MMWR Weeks.