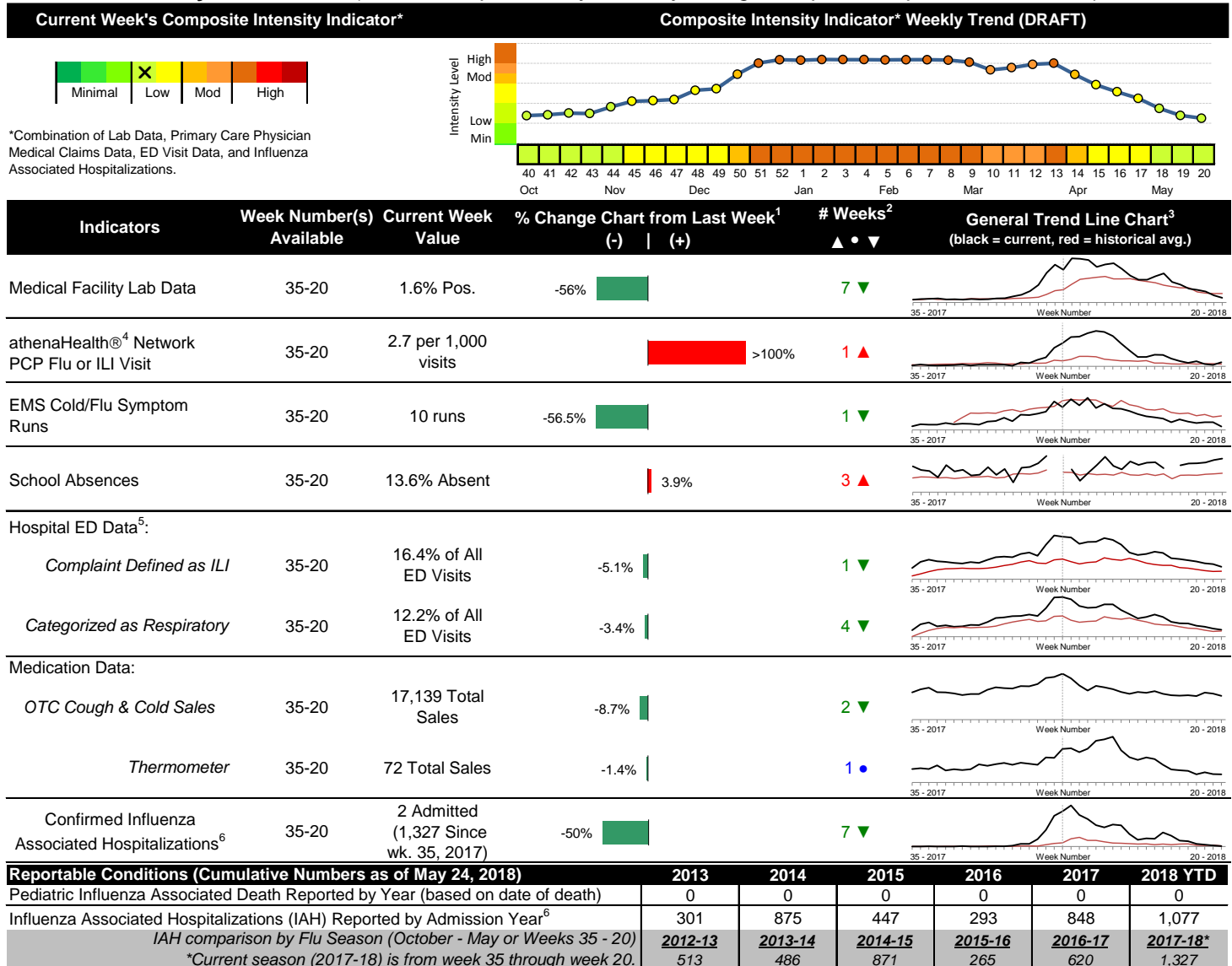


2017-2018 Columbus & Franklin County Seasonal Influenza Activity Weekly Summary (Week 20, May 13th, 2018– May 19th, 2018)

Highlights

- This is the final weekly flu summary for the 2017-18 season. In week 20 of 2018, the trends for individual preliminary local flu activity indicators were mixed compared to last week, with the majority of key indicators decreasing. As a whole, flu intensity (composite indicator) decreased, is low, and is now at a similar level as the start of the season.
- Geographic spread and local intensity designation (Click [here](#) for definitions) = SPORADIC, LOW
- Local medical facility labs reported 505 tests run with 8 (1.6%) positive results for week 20 of 2018.
- The percentage of ED visits for both influenza-like-illness (ILI) and respiratory symptoms decreased compared to last week.
- In week 20 of 2018, the majority of trends for all local over-the-counter medication category sales tracked decreased (decrease in cough and cold, electrolyte, chest rub, pediatric anti-fever, adult anti-fever, and throat lozenge sales; stable thermometer sales) compared to last week.
- Nationally, influenza activity continued to decrease. Please [visit the CDC website for specific information](#).

Local Flu Activity Dashboard (All data are preliminary and may change as updated reports are received.)



¹Interpret with caution. Indicators with small numbers subject to large weekly percentage fluctuations.
²Number of weeks "▲" = Increase (>2%), "▼" = Decrease (>2%), "•" = Stable (-2% to +2%).
³Black line is current years data. Based on data availability, red line is historical average (excluding pandemic year).
⁴Data Source: Medical claims data from athenaHealth® (www.athenahealth.com). Rate of Flu or ILI visits to Franklin County, OH athenaHealth® network primary care practices/physicians. Claims data are subject to filing and processing time lags. Historical data are updated when they are received.
⁵Franklin County, OH residents only (based on zipcode). NOTE: Excludes one hospital system included in the past due to technical changes affecting visit classification assignment and numbers.
⁶Confirmed cases only. Based on jurisdiction equal to Franklin County or City of Columbus and admission date available in ODRS.

Influenza Morbidity and Influenza-Like Illness (ILI) Reports

In week 20, the preliminary local influenza and influenza-like-illness (ILI) visit rate to athenaHealth® providers (2.7 per 1,000 visits) increased compared to the previous week and is above its baseline average for the week (Figure 1). The week 20 percentage of all Emergency Department (ED) visits categorized as ILI decreased compared to the previous week (Figure 3) and is above its historic baseline for the week.

Nationally, during week 20 of 2018, 1.2% of patient visits reported through ILINet were due to influenza-like illness (ILI). The percentage is below the national baseline of 2.2% for week 20.

Laboratory Surveillance

During week 20 of 2018, reporting Franklin County sentinel medical facility laboratories tested 505 specimens, with 8 (1.6%) positive (Figure 4). The total number of tests done by local reporting labs from week 35 of 2017 through week 20 of 2018 is 65,188 with 12,315 (18.9%) positives (8,509 type A, 3,798 type B, 7 type A and B, 1 type unknown).

Nationally in week 20 of 2018, clinical laboratories reported 8,426 specimens tested for influenza viruses, 186 (2.2%) of which were positive (85 type A, 101 type B). Public health laboratories reported testing 179 specimens, 18 of which were positive (6 type A – of which 4 were A(H1N1)pdm09, 2 were H3N2, and 0 were not subtyped; 12 type B – of which 6 were Yamagata lineage, 1 were Victoria lineage, and 5 where lineage was not performed). Please visit the CDC website for more information, including cumulative data.

In week 20, Ohio clinical labs reported 81,391 specimens tested for influenza this season thus far. Positive results include: (209) A(H1N1)pdm09; (644) A/H3N2; (11,384) Flu A Not Subtyped, and (4,551) Flu B (through 5/19/18). In week 20, ODH Public Health Lab reported 1,241 specimens tested for influenza from various submitters this season thus far. Positive results include: (105) A(H1N1)pdm09; (683) A/H3N2; (201) Influenza B (through 5/19/18). Please visit the ODH website for more information.

ED Respiratory Visits

In the 20th week of 2018, the percentage of all ED visits categorized as respiratory decreased slightly compared to the percentage seen the previous week and is similar to its historic baseline for the week (Figure 5).

Over-the-Counter (OTC) Medication Sales

In week 20 of 2018, the majority of trends for all local over-the-counter medication category sales tracked decreased (decrease in cough and cold, electrolyte, chest rub, pediatric anti-fever, adult anti-fever, and throat lozenge sales; stable thermometer sales) compared to last week.

Additional Influenza Activity Web Links:

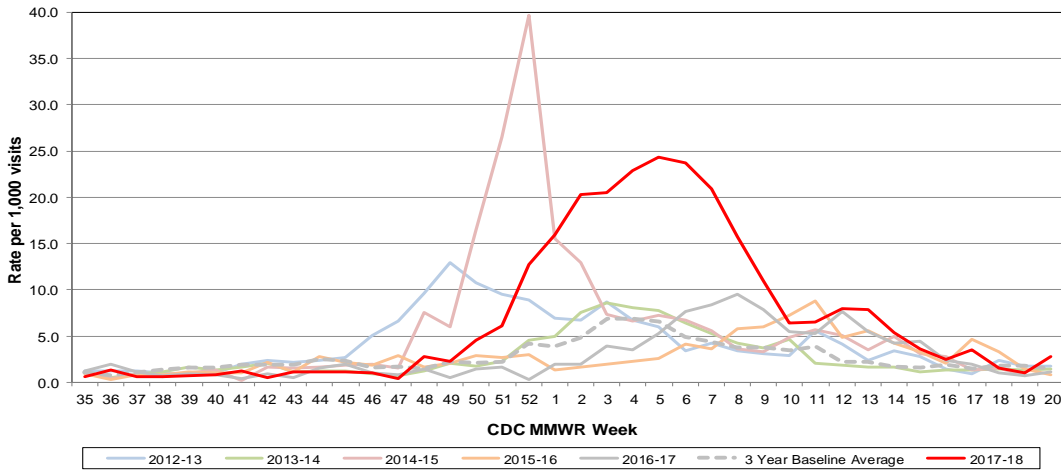
Ohio Seasonal Flu Surveillance: <http://www.odh.ohio.gov/seasflu/Ohio%20Flu%20Activity.aspx>

CDC National Seasonal Flu Surveillance Reports: <http://www.cdc.gov/flu/weekly/>

World Health Organization Situation Updates: http://www.who.int/influenza/surveillance_monitoring/en/

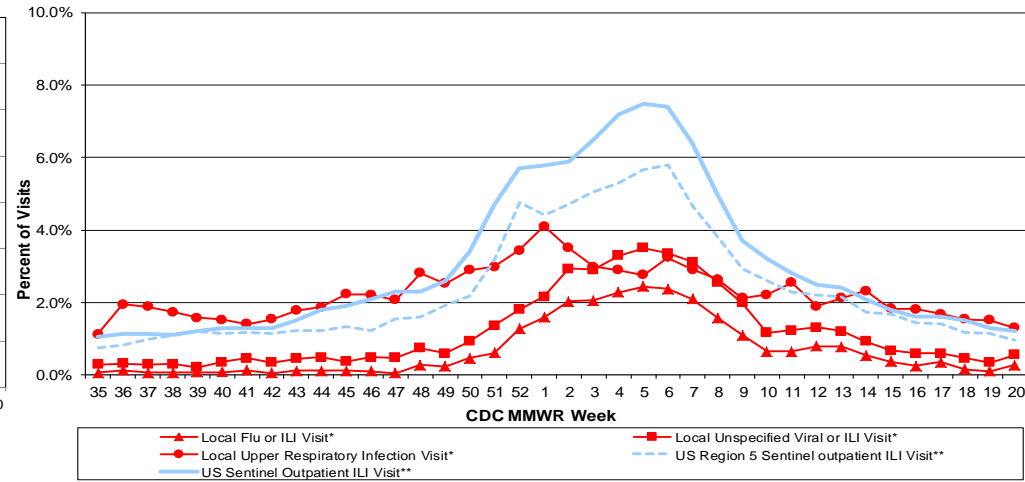
Columbus & Franklin County Influenza Monitoring Summary – Week 20, 2018 (5/13/2018-5/19/2018)

Figure 1: Local Participating Outpatient Primary Care Provider Influenza or Influenza-Like-Illness Visit Rate*, Franklin County, OH



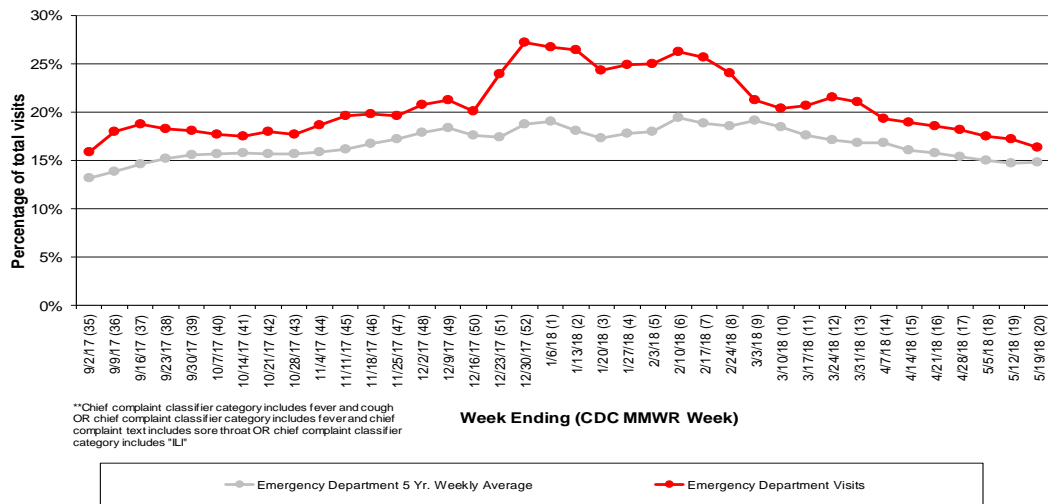
*Source: Medical Claims data from athenaHealth®
 Note: athenaHealth® claims data are subject to filing and processing time lags. Historical data are updated when they are received.

Figure 2: Percentage of Local Outpatient Participating Provider* visits for ILI and Associated Illnesses, 2017-18



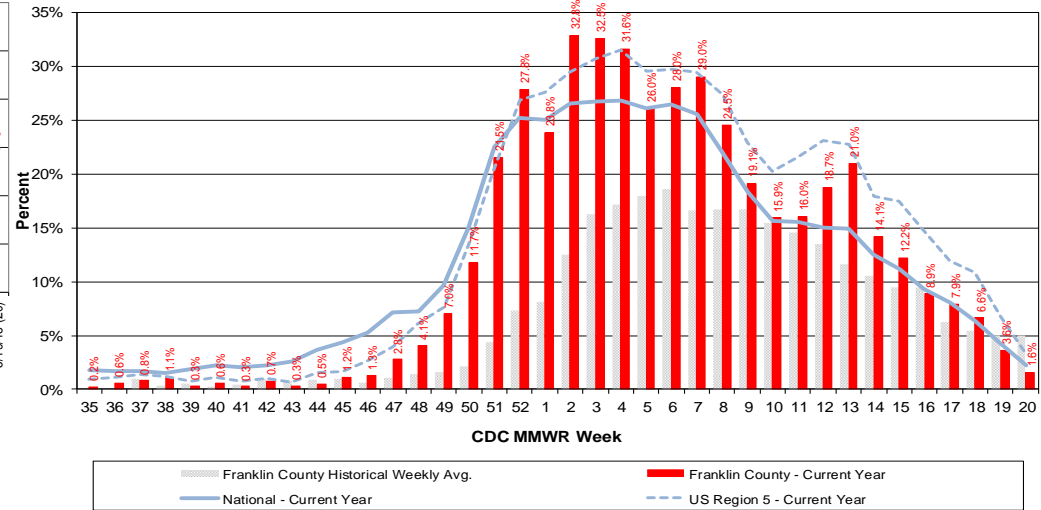
*Source: Local medical claims data provided by athenaHealth®. Data are subject to filing and processing time lags. Historical data are updated when received.

Figure 3: Franklin County Resident ILI Defined ED Visits, 2017-18, Franklin County, OH**



**Chief complaint classifier category includes fever and cough
 OR chief complaint classifier category includes fever and chief complaint text includes sore throat OR chief complaint classifier category includes "ILI"

Figure 4: Percentage of Local Reporting and National Laboratory Positive Influenza Tests by Week, 2017-18



Columbus & Franklin County Influenza Monitoring Summary – Week 20, 2018 (5/13/2018-5/19/2018)

Figure 5: Franklin County Resident Respiratory ED Visits, 2017-18, Franklin County, OH

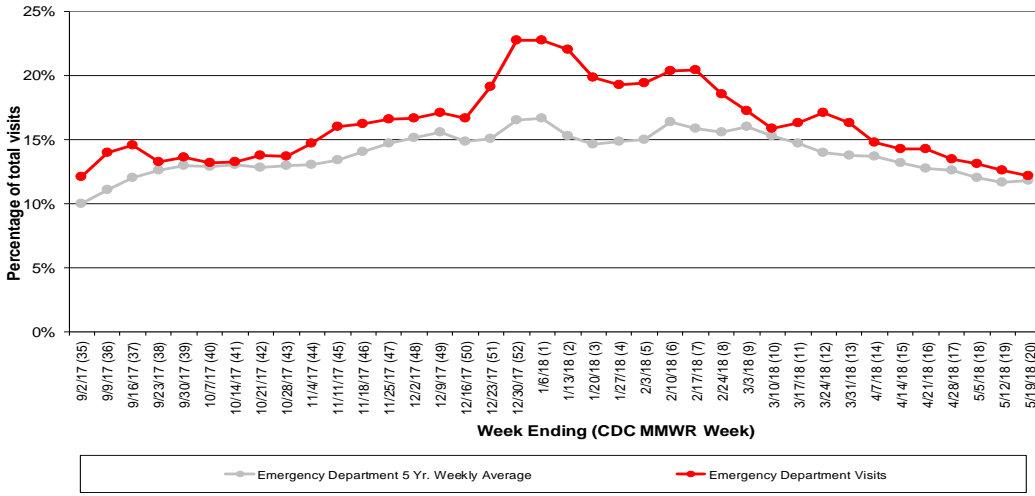


Figure 6: Selected Number of Over-the-Counter Medication Total Sales, 2017-18, Franklin County, OH

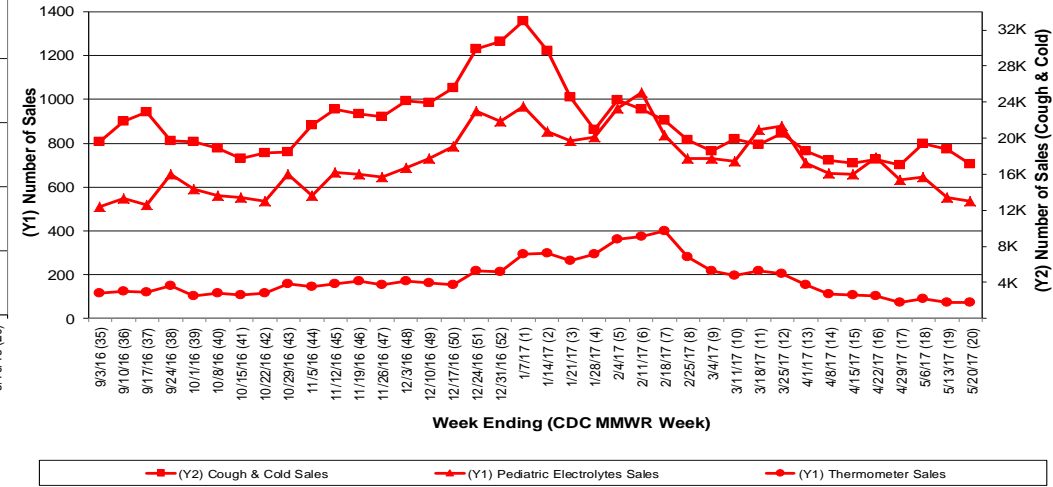
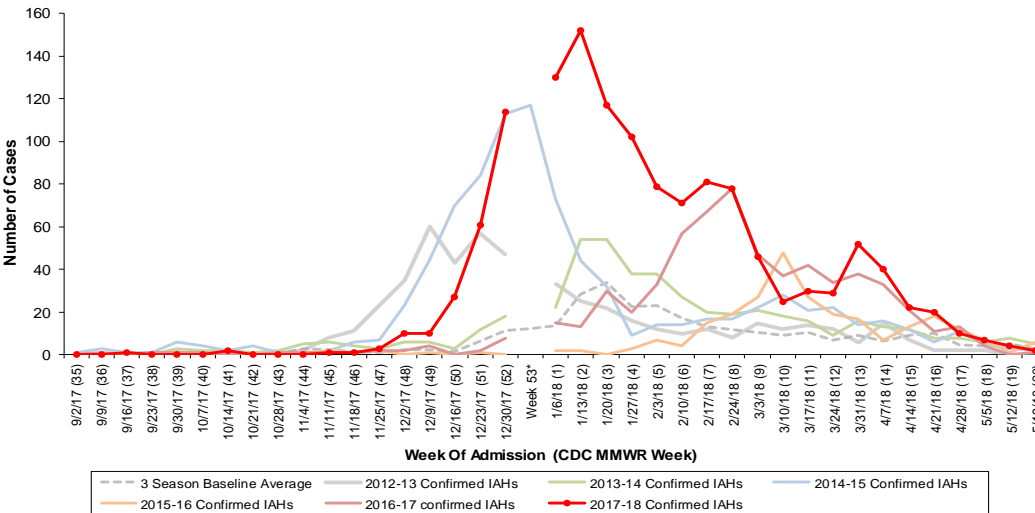
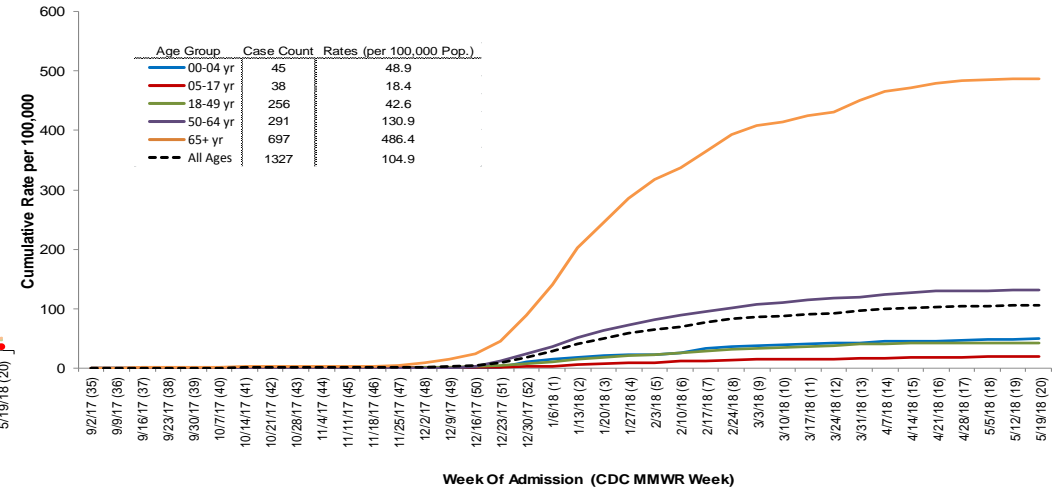


Figure 7: Columbus and Franklin County Jurisdiction Confirmed Influenza Associated Hospitalizations by Hospital Admission Week (As of 5/24/2018)



Columbus and Franklin County, OH Jurisdiction Confirmed Influenza Hospitalization Cumulative Rates (per 100,000) by Age-Group and Admission Week, 2017-2018 Season



*Note: Certain years have a 53rd week (e.g., season 2014-15) based on CDC's MMWR Weeks.