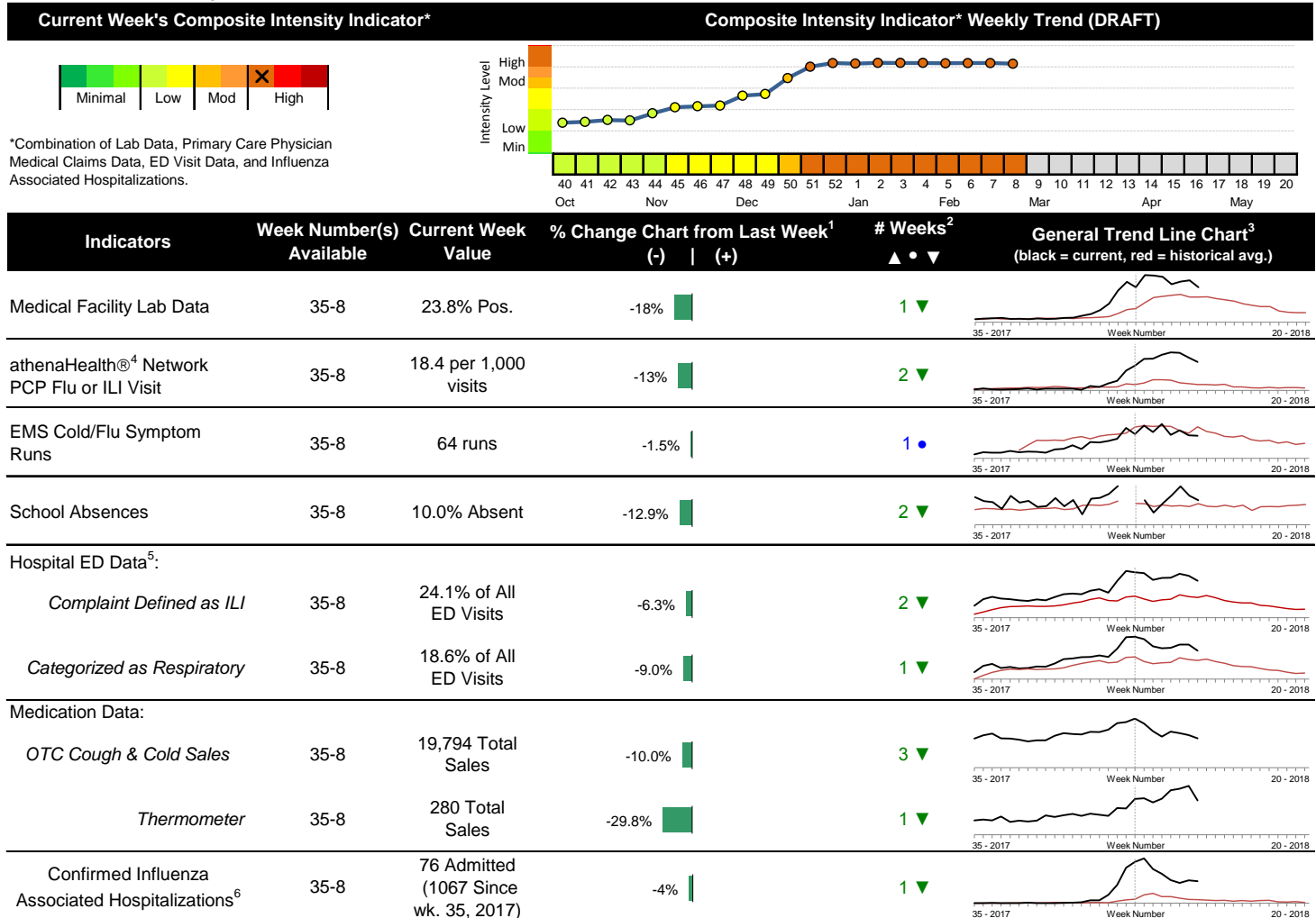


# 2017-2018 Columbus & Franklin County Seasonal Influenza Activity Weekly Summary (Week 8, Feb. 18<sup>th</sup>, 2018– Feb. 24<sup>th</sup>, 2018)

## Highlights

- In week 8 of 2018, the majority of individual preliminary local flu activity indicator trends decreased compared to the previous week. As a whole, flu intensity (composite indicator) continues to be high but shows signs of decreasing.
- Geographic spread and local intensity designation (Click [here](#) for definitions) = WIDESPREAD, HIGH
- Local medical facility labs reported 3,016 tests run with 717 (23.8%) positive results for week 8 of 2018. Of note, in week 8, the majority of positive test results from reporters with type available were influenza B.
- The percentage of ED visits for both influenza-like-illness (ILI) and respiratory symptom visits decreased compared to last week. The percentage of ED visits for both ILI and respiratory symptoms continue to be above their respective baseline averages for the week.
- In week 8 of 2018, all local over-the-counter medication category sales tracked decreased (decrease in cough and cold, electrolyte, thermometer, chest rub, pediatric anti-fever, adult anti-fever, and throat lozenge sales) compared to last week.
- Nationally, influenza activity decreased in week 8 of 2018 but remains elevated overall. Please [visit the CDC website for specific information](#) (National data is usually updated on Friday of each week).

## Local Flu Activity Dashboard (All data are preliminary and may change as updated reports are received.)



Reportable Conditions (Cumulative Numbers as of Mar. 1, 2018)	2013	2014	2015	2016	2017	2018 YTD
Pediatric Influenza Associated Death Reported by Year (based on date of death)	0	0	0	0	0	0
Influenza Associated Hospitalizations (IAH) Reported by Admission Year <sup>6</sup>	301	875	448	292	865	826
IAH comparison by Season (October - May or Weeks 35 - 20)	<u>2012-13</u>	<u>2013-14</u>	<u>2014-15</u>	<u>2015-16</u>	<u>2016-17</u>	<u>2017-18*</u>
*Current season (2017-18) is from week 35 through week 8.	512	486	872	264	620	1,067

<sup>1</sup>Interpret with caution. Indicators with small numbers subject to large weekly percentage fluctuations.  
<sup>2</sup>Number of weeks "▲" = Increase (>2%), "▼" = Decrease (>2%), "•" = Stable (-2% to +2%).  
<sup>3</sup>Black line is current years data. Based on data availability, red line is historical average (excluding pandemic year).  
<sup>4</sup>Data Source: Medical claims data from athenaHealth® (www.athenahealth.com). Rate of Flu or ILI visits to Franklin County, OH athenaHealth® network primary care practices/physicians. Claims data are subject to filing and processing time lags. Historical data are updated when they are received.  
<sup>5</sup>Franklin County, OH residents only (based on zipcode). NOTE: Excludes one hospital system included in the past due to technical changes affecting visit classification assignment and numbers.  
<sup>6</sup>Confirmed cases only. Based on jurisdiction equal to Franklin County or City of Columbus and admission date available in ODRS.

## **Influenza Morbidity and Influenza-Like Illness (ILI) Reports**

In week 8, the preliminary local influenza and influenza-like-illness (ILI) visit rate to athenaHealth® providers (18.4 per 1,000 visits) decreased compared to the previous week and is above its baseline average for the week (Figure 1). The week 8 percentage of all Emergency Department (ED) visits categorized as ILI decreased compared to the previous week (Figure 3) and is above its historic baseline for the week.

Nationally, during week 8 of 2018, 5.0% of patient visits reported through ILINet were due to influenza-like illness (ILI). The percentage is above the national baseline of 2.2% for week 8.

## **Laboratory Surveillance**

During week 8 of 2018, reporting Franklin County sentinel medical facility laboratories tested 3,016 specimens, with 717 (23.8%) positive (Figure 4). The total number of tests done by local reporting labs from week 35 of 2017 through week 8 of 2018 is 48,999 with 10,007 (20.4%) positives (7,815 type A, 2,188 type B, 3 type A and B, 1 type unknown).

Nationally in week 8 of 2018, clinical laboratories reported 42,615 specimens tested for influenza viruses, 9,191 (21.6%) of which were positive (4,742 type A, 4,449 type B). Public health laboratories reported testing 1,996 specimens, 1,095 of which were positive (593 type A – of which 115 were A(H1N1)pdm09, 467 were H3N2, and 11 were not subtyped; 502 type B – of which 322 were Yamagata lineage, 36 were Victoria lineage, and 144 where lineage was not performed). Please visit the CDC website for more information, including cumulative data.

In week 8, Ohio clinical labs reported 56,718 specimens tested for influenza this season thus far. Positive results include: (156) A(H1N1)pdm09; (555) A/H3N2; (9,547) Flu A Not Subtyped, and (2,273) Flu B (through 2/24/18). In week 8, ODH Public Health Lab reported 1,057 specimens tested for influenza from various submitters this season thus far. Positive results include: (96) A(H1N1)pdm09; (671) A/H3N2; (105) Influenza B (through 2/24/18). Please visit the ODH website for more information.

## **ED Respiratory Visits**

In the 8<sup>th</sup> week of 2018, the percentage of all ED visits categorized as respiratory decreased compared to the percentage seen the previous week and is above its historic baseline for the week (Figure 5).

## **Over-the-Counter (OTC) Medication Sales**

In week 8 of 2018, all local over-the-counter medication category sales tracked decreased (decrease in cough and cold, electrolyte, thermometer, chest rub, pediatric anti-fever, adult anti-fever, and throat lozenge sales) compared to last week.

## **Additional Influenza Activity Web Links:**

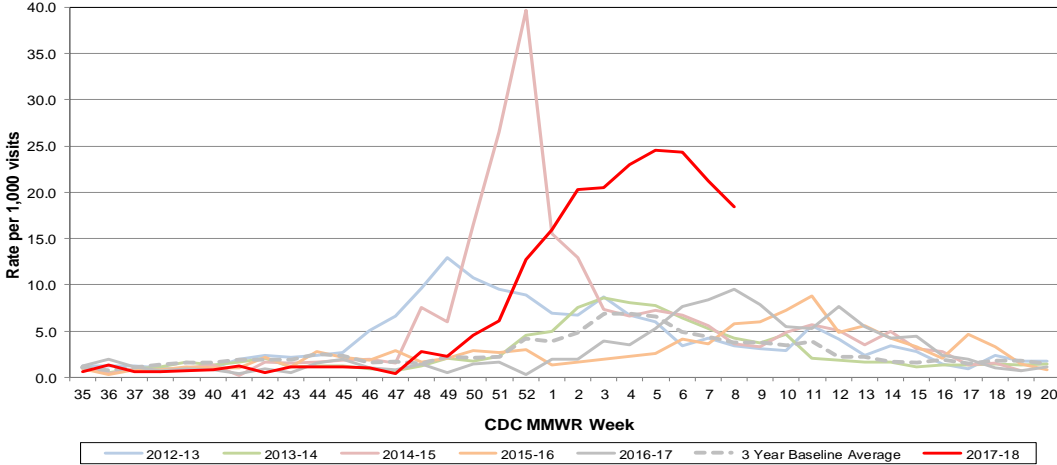
Ohio Seasonal Flu Surveillance: <http://www.odh.ohio.gov/seasflu/Ohio%20Flu%20Activity.aspx>

CDC National Seasonal Flu Surveillance Reports: <http://www.cdc.gov/flu/weekly/>

World Health Organization Situation Updates: [http://www.who.int/influenza/surveillance\\_monitoring/en/](http://www.who.int/influenza/surveillance_monitoring/en/)

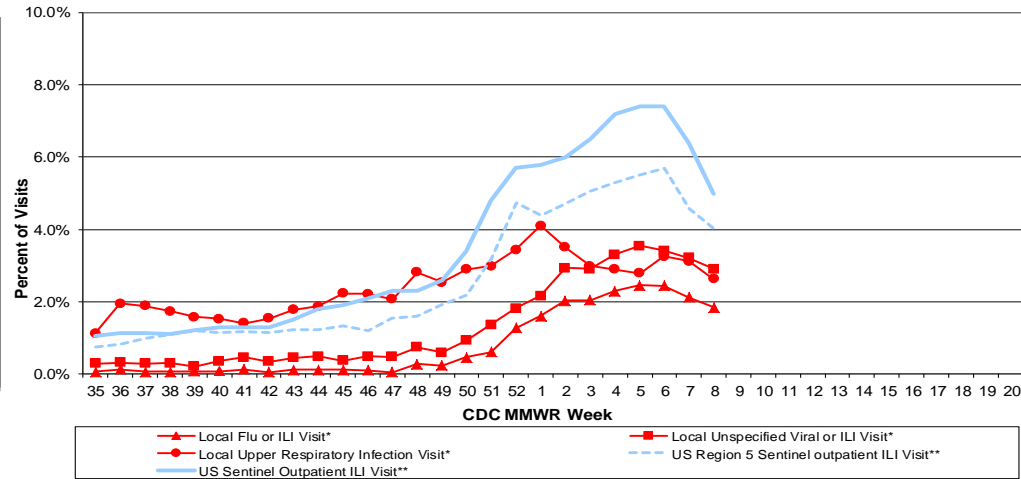
# Columbus & Franklin County Influenza Monitoring Summary – Week 8, 2018 (2/18/2018-2/24/2018)

**Figure 1: Local Participating Outpatient Primary Care Provider Influenza or Influenza-Like Illness Visit Rate\*, Franklin County, OH**



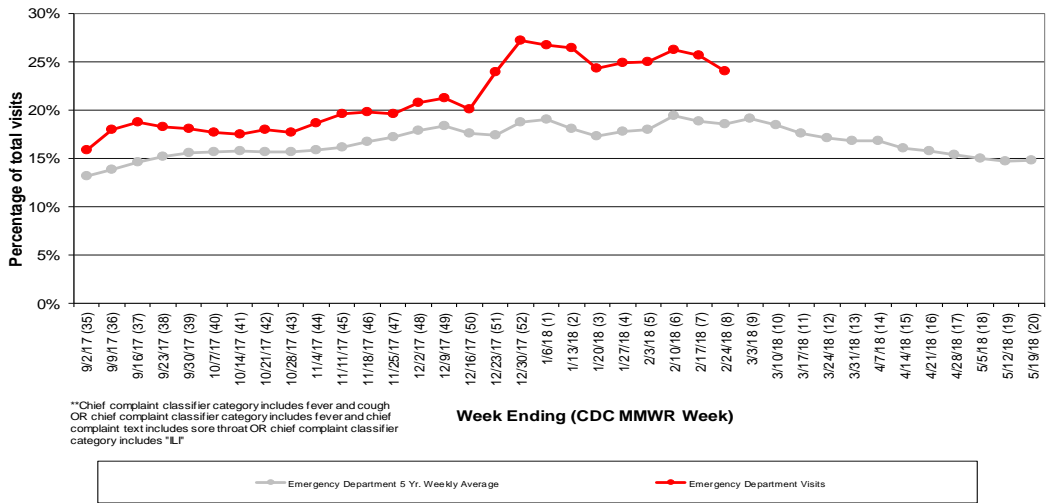
\*Source: Medical Claims data from athenaHealth®  
 Note: athenaHealth® claims data are subject to filing and processing time lags. Historical data are updated when they are received.

**Figure 2: Percentage of Local Outpatient Participating Provider\* visits for ILI and Associated Illnesses, 2017-18**



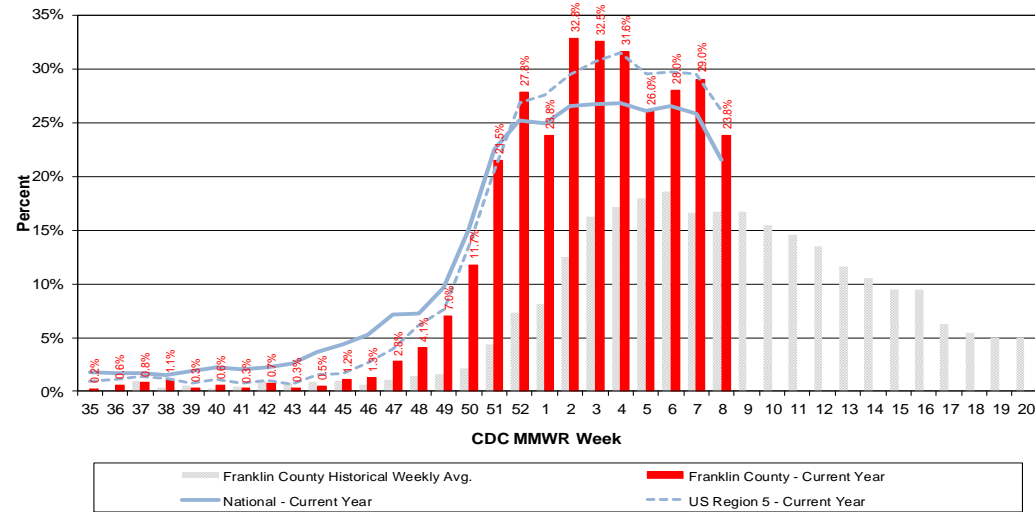
\*Source: Local medical claims data provided by athenaHealth®. Data are subject to filing and processing time lags. Historical data are updated when received.

**Figure 3: Franklin County Resident ILI Defined\*\* ED Visits, 2017-18, Franklin County, OH**



\*\*Chief complaint classifier category includes fever and cough  
 OR chief complaint classifier category includes fever and chief complaint text includes sore throat OR chief complaint classifier category includes \*LF

**Figure 4: Percentage of Local Reporting and National Laboratory Positive Influenza Tests by Week, 2017-18**



Columbus & Franklin County Influenza Monitoring Summary – Week 8, 2018 (2/18/2018-2/24/2018)

Figure 5: Franklin County Resident Respiratory ED Visits, 2017-18, Franklin County, OH

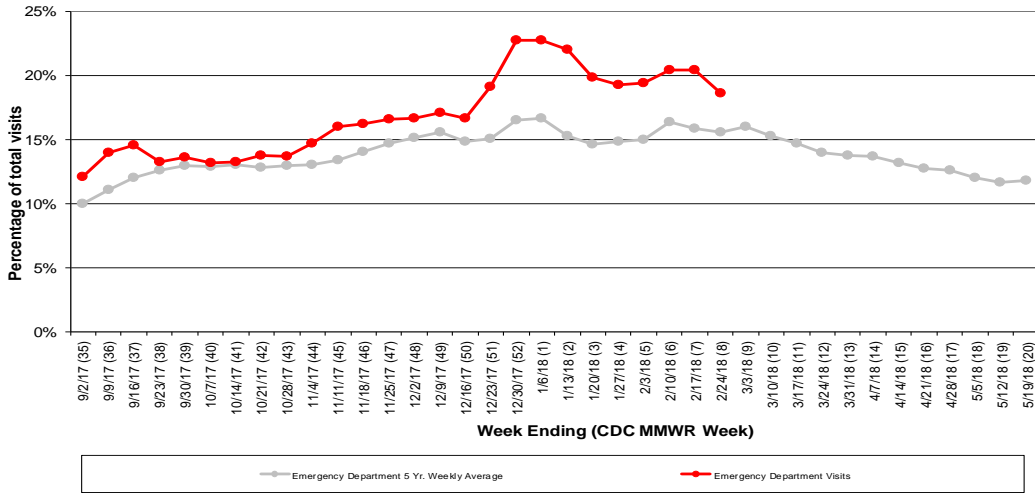


Figure 6: Selected Number of Over-the-Counter Medication Total Sales, 2017-18, Franklin County, OH

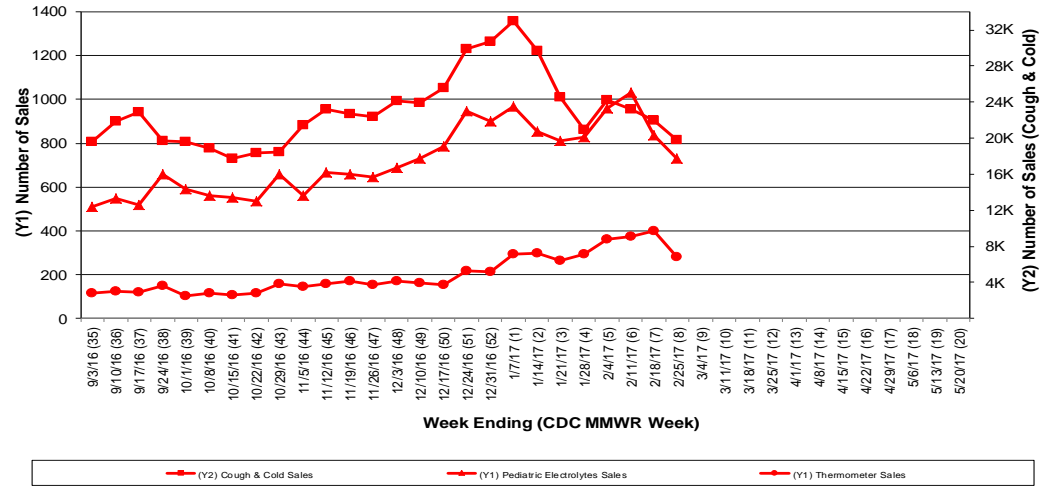
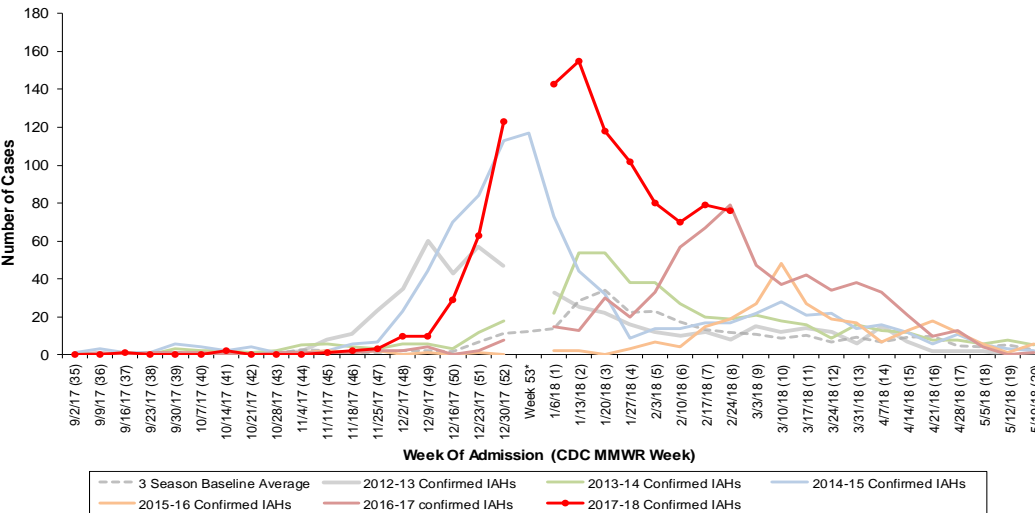


Figure 7: Columbus and Franklin County Jurisdiction Confirmed Influenza Associated Hospitalizations by Hospital Admission Week (As of 3/1/2018)



\*Note: Certain years have a 53rd week (e.g., season 2014-15) based on CDCs MMWR Weeks.

Columbus and Franklin County, OH Jurisdiction Confirmed Influenza Hospitalization Cumulative Rates (per 100,000) by Age-Group and Admission Week, 2017-2018 Season

