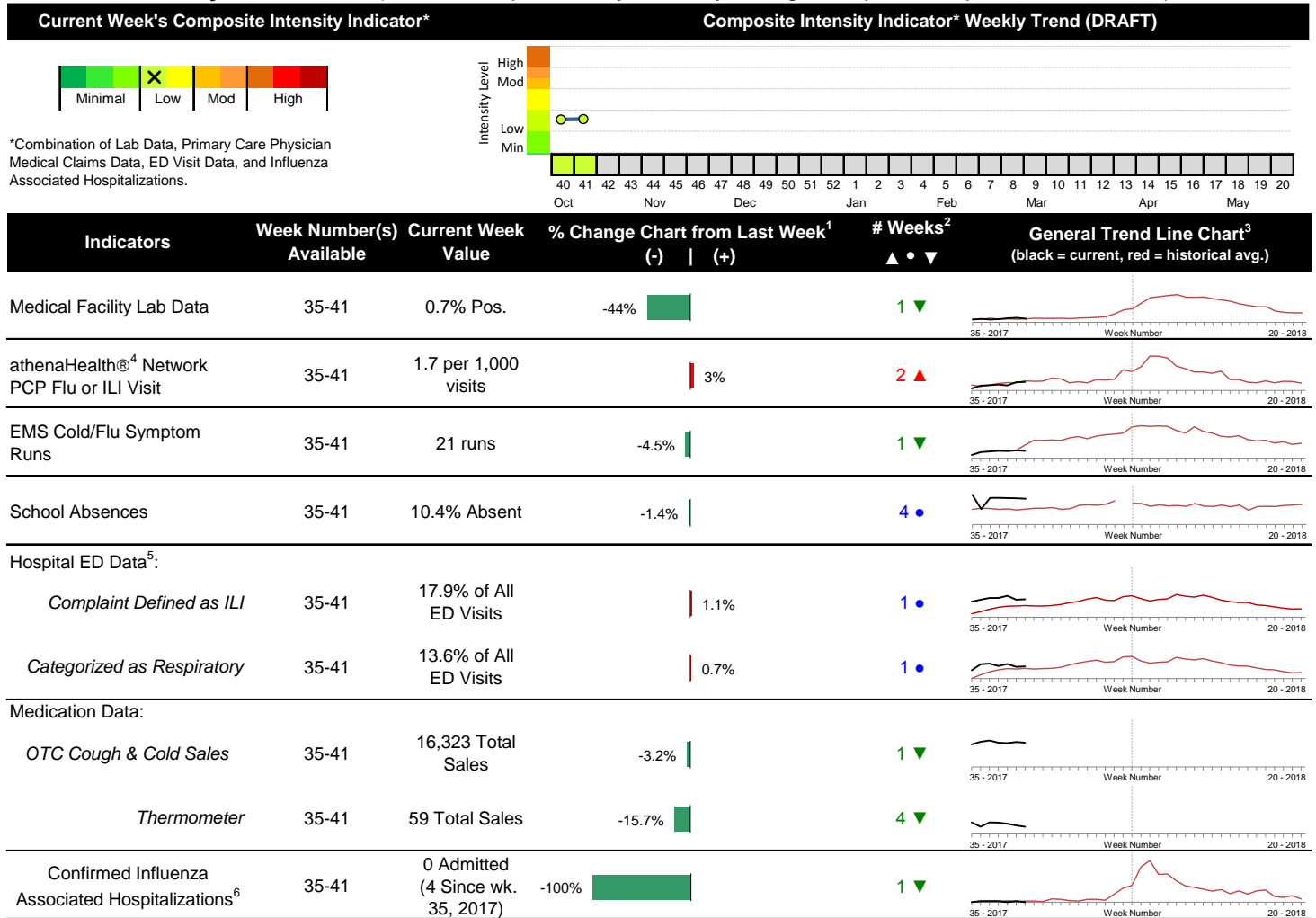


Highlights

- In week 41 of 2018, the individual local flu activity indicator trends were mixed compared to last week. As a whole, flu intensity (composite indicator) was low for the week.
- Geographic spread and local intensity designation (Click [here](#) for definitions) = SPORADIC, LOW
- Local medical facility labs reported 863 tests run with 6 (0.7%) positive results for week 41 of 2018.
- The percentage of ED visits for both influenza-like-illness (ILI) and respiratory symptoms was stable compared to last week.
- In week 41 of 2018, trends for local over-the-counter medication category sales tracked generally decreased (decrease in cough and cold, electrolyte, thermometer, chest rub, and adult anti-fever sales; increase in pediatric anti-fever and throat lozenge sales) compared to last week.
- Nationally, influenza activity remains low. Please [visit the CDC website for specific information](#).

Local Flu Activity Dashboard (All data are preliminary and may change as updated reports are received.)



Reportable Conditions (Cumulative Numbers as of Oct. 14, 2018)	2013	2014	2015	2016	2017	2018 YTD
Pediatric Influenza Associated Death Reported by Year (based on date of death)	0	0	0	0	0	0
Influenza Associated Hospitalizations (IAH) Reported by Admission Year ⁶	301	875	447	293	846	993
IAH comparison by Flu Season (October - May or Weeks 35 - 20)	<u>2013-14</u>	<u>2014-15</u>	<u>2015-16</u>	<u>2016-17</u>	<u>2017-18</u>	<u>2018-19*</u>
*Current season (2018-19) is from week 35 through week 20.	486	871	265	619	1,236	4

¹Interpret with caution. Indicators with small numbers subject to large weekly percentage fluctuations.

²Number of weeks "▲" = Increase (>2%), "▼" = Decrease (>2%), "•" = Stable (-2% to +2%).

³Black line is current years data. Based on data availability, red line is historical average (excluding pandemic year).

⁴Data Source: Medical claims data from athenaHealth® (www.athenahealth.com). Rate of Flu or ILI visits to Franklin County, OH athenaHealth® network primary care practices/physicians. Claims data are subject to filing and processing time lags. Historical data are updated when they are received.

⁵Franklin County, OH residents only (based on zipcode). NOTE: Excludes one hospital system included in the past due to technical changes affecting visit classification assignment and numbers.

⁶Confirmed cases only. Based on jurisdiction equal to Franklin County or City of Columbus and admission date available in ODRS.

Influenza Morbidity and Influenza-Like Illness (ILI) Reports

In week 41, the preliminary local influenza and influenza-like-illness (ILI) visit rate to athenaHealth® providers (1.7 per 1,000 visits) increased slightly compared to the previous week and is similar to its baseline average for the week (Figure 1). The week 41 percentage of all Emergency Department (ED) visits categorized as ILI is similar compared to the previous week (Figure 3) and is above its historic baseline for the week.

Nationally, during week 41 of 2018, 1.4% of patient visits reported through ILINet were due to influenza-like illness (ILI). The percentage is below the national baseline of 2.2% for week 41.

Laboratory Surveillance

During week 41 of 2018, reporting Franklin County sentinel medical facility laboratories tested 863 specimens, with 6 (0.7%) positive (Figure 4). The total number of tests done by local reporting labs from week 35 of 2018 through week 41 of 2018 is 3,811 with 26 (0.7%) positives (10 type A, 16 type B, 0 type A and B, 0 type unknown).

Nationally in week 41 of 2018, clinical laboratories reported 11,444 specimens tested for influenza viruses, 92 (0.8%) of which were positive (63 type A, 29 type B). Public health laboratories reported testing 369 specimens, 22 of which were positive (19 type A – of which 14 were A(H1N1)pdm09, 4 were H3, and 1 were not subtyped; 3 type B – of which 1 were Yamagata lineage, 1 were Victoria lineage, and 1 where lineage was not performed). Please visit the CDC website for more information, including cumulative data.

In week 41, Ohio clinical labs reported 2,235 specimens tested for influenza this season thus far. Positive results include: (1) A(H1N1)pdm09; (0) A/H3N2; (3) Flu A Not Subtyped, and (3) Flu B (through 10/13/2018). In week 41, ODH Public Health Lab reported 3 specimens tested for influenza from various submitters this season thus far. Positive results include: (2) A(H1N1)pdm09; (0) A/H3N2; (0) Influenza B (through 10/13/2018). Please visit the ODH website for more information.

ED Respiratory Visits

In the 41st week of 2018, the percentage of all ED visits categorized as respiratory was stable compared to the percentage seen the previous week and is close to the historic baseline for the week (Figure 5).

Over-the-Counter (OTC) Medication Sales

In week 41 of 2018, trends for local over-the-counter medication category sales tracked generally decreased (decrease in cough and cold, electrolyte, thermometer, chest rub, and adult anti-fever sales; increase in pediatric anti-fever and throat lozenge sales) compared to last week.

Additional Influenza Activity Web Links:

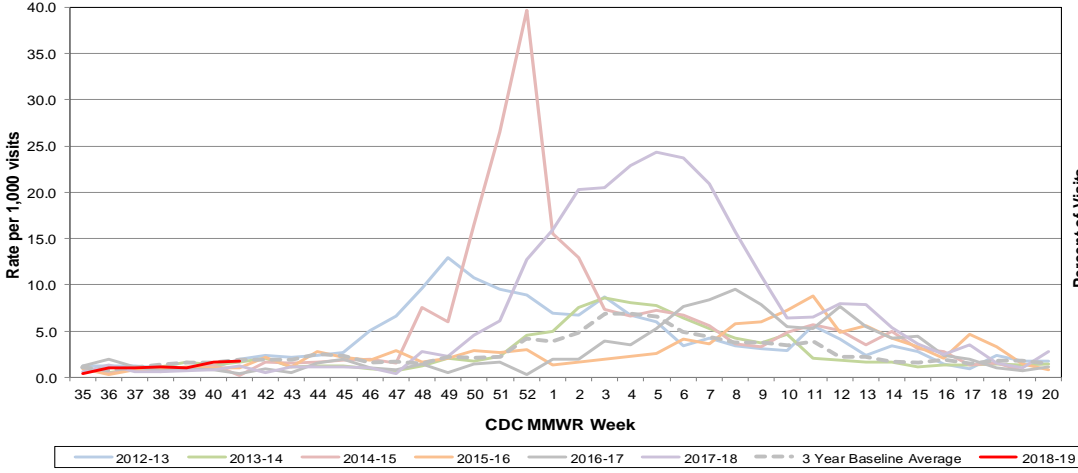
Ohio Seasonal Flu Surveillance: <http://www.odh.ohio.gov/seasflu/Ohio%20Flu%20Activity.aspx>

CDC National Seasonal Flu Surveillance Reports: <http://www.cdc.gov/flu/weekly/>

World Health Organization Situation Updates: http://www.who.int/influenza/surveillance_monitoring/en/

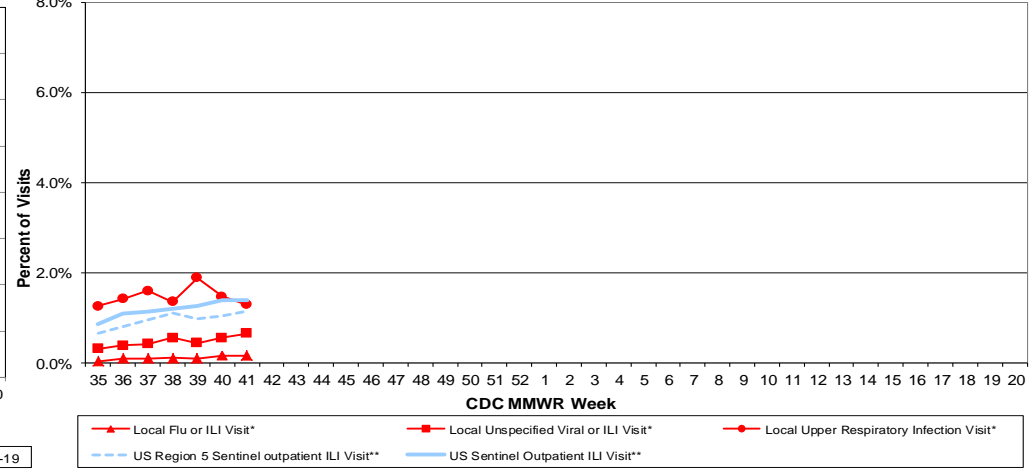
Columbus & Franklin County Influenza Monitoring Summary – Week 41, 2018 (10/7/2018-10/13/2018)

Figure 1: Local Participating Outpatient Primary Care Provider Influenza or Influenza-Like Illness Visit Rate*, Franklin County, OH



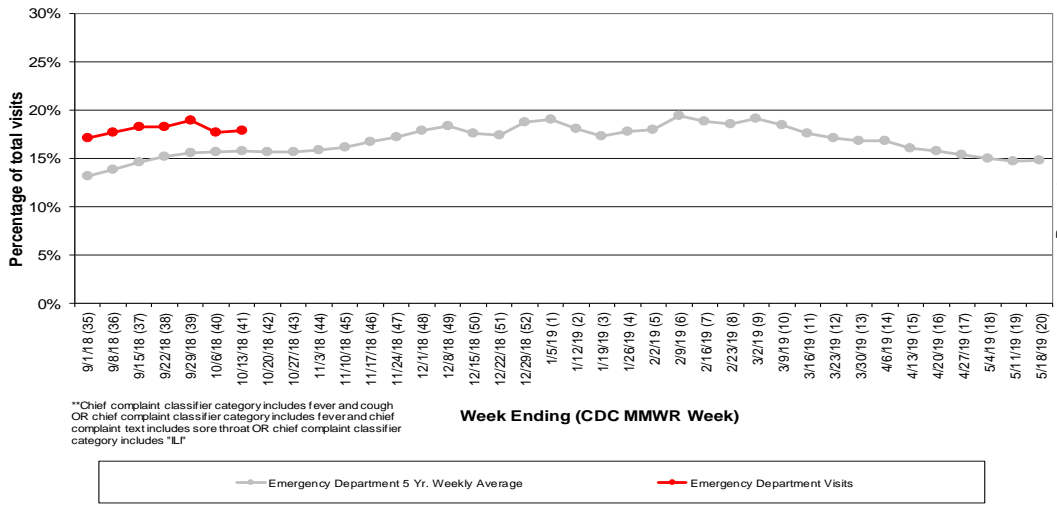
*Source: Medical Claims data from athenaHealth®
 Note: athenaHealth® claims data are subject to filing and processing time lags. Historical data are updated when they are received.

Figure 2: Percentage of Local Outpatient Participating Provider* visits for ILI and Associated Illnesses, 2018-19



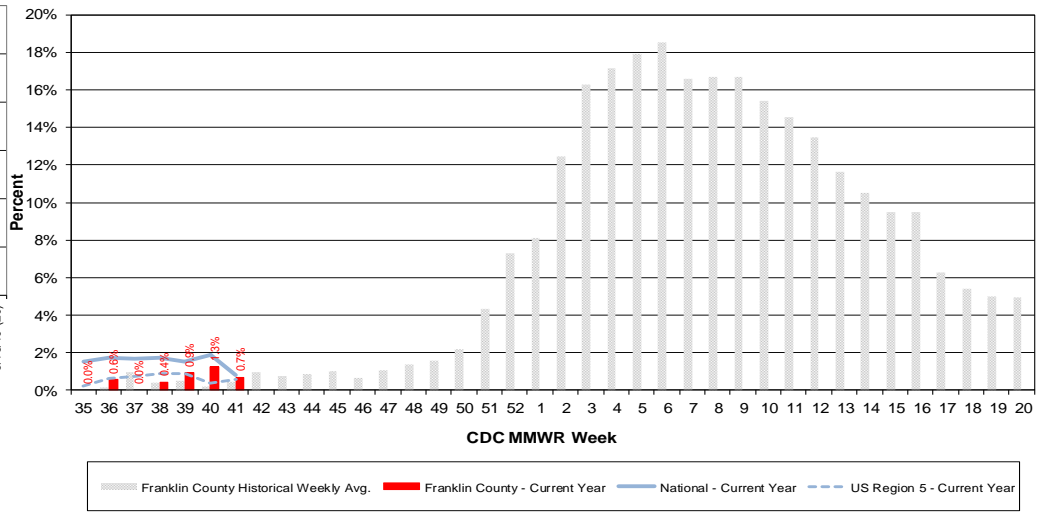
*Source: Local medical claims data provided by athenaHealth®. Data are subject to filing and processing time lags. Historical data are updated when received.

Figure 3: Franklin County Resident ILI Defined ED Visits, 2018-19, Franklin County, OH**



**Chief complaint classifier category includes fever and cough
 OR chief complaint classifier category includes fever and chief complaint text includes sore throat OR chief complaint classifier category includes "ILI"

Figure 4: Percentage of Local Reporting and National Laboratory Positive Influenza Tests by Week, 2018-19



Columbus & Franklin County Influenza Monitoring Summary – Week 41, 2018 (10/7/2018-10/13/2018)

Figure 5: Franklin County Resident Respiratory ED Visits, 2018-19, Franklin County, OH

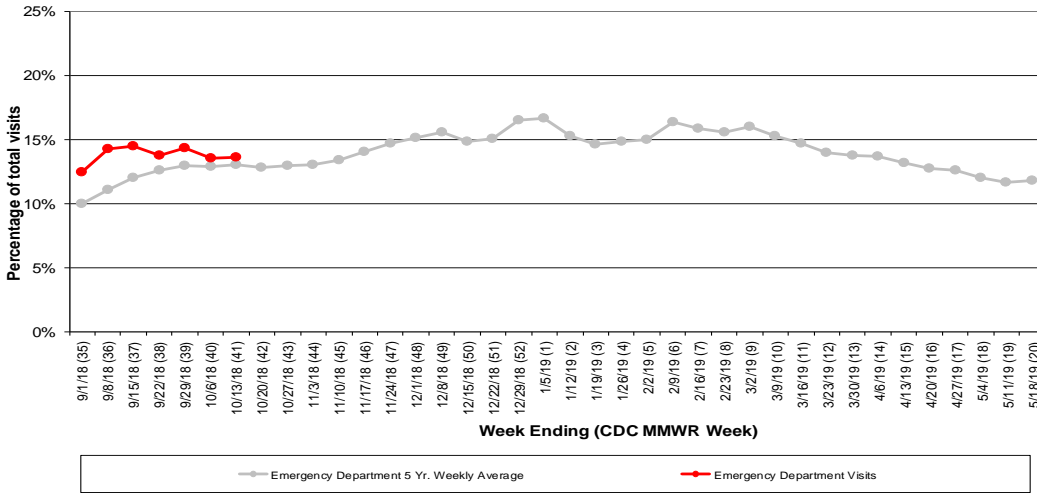


Figure 6: Selected Number of Over-the-Counter Medication Total Sales, 2018-19, Franklin County, OH

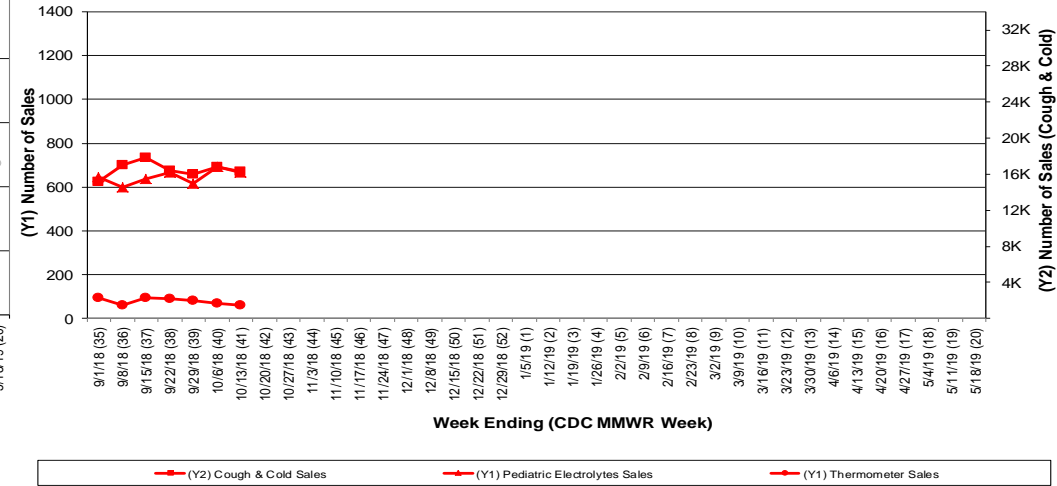
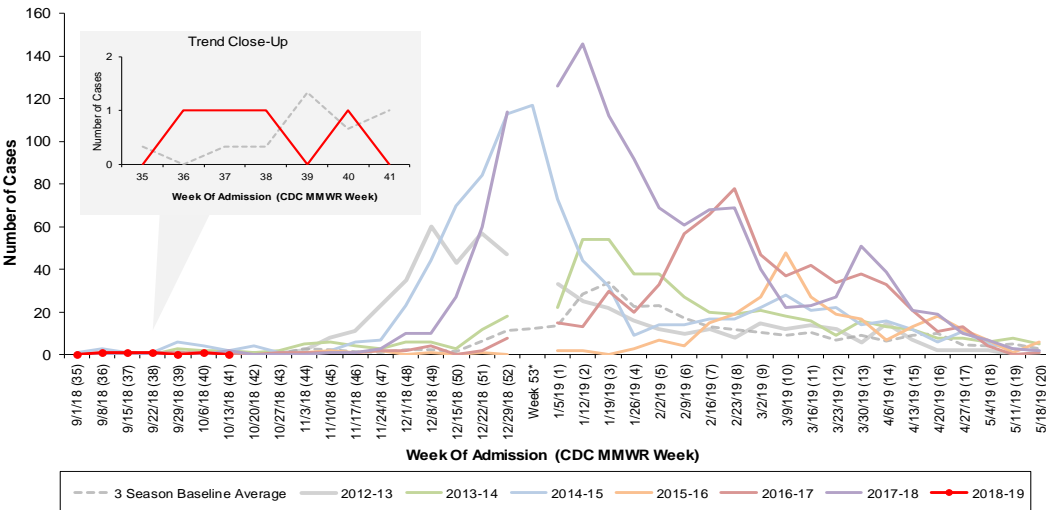
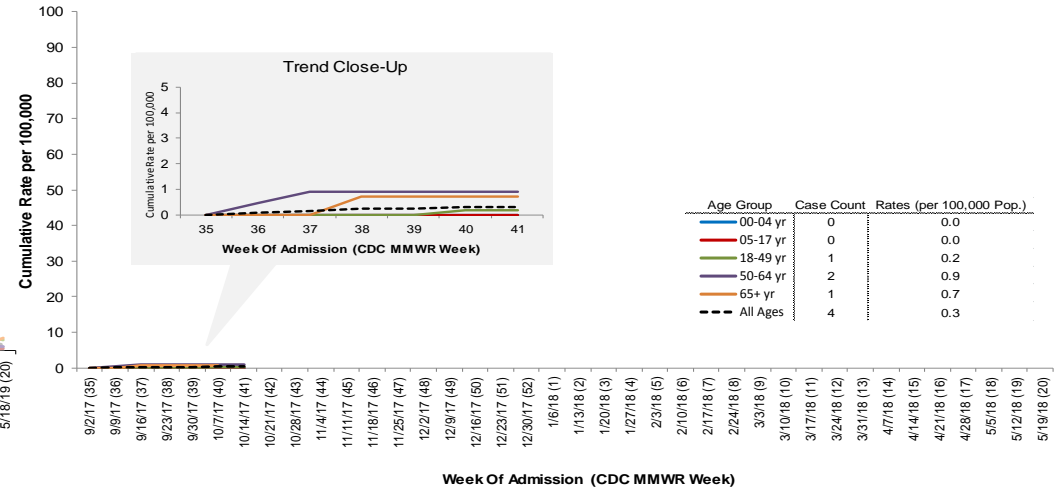


Figure 7: Columbus and Franklin County Jurisdiction Confirmed Influenza Associated Hospitalizations by Hospital Admission Week (As of 10/14/2018)



Columbus and Franklin County, OH Jurisdiction Confirmed Influenza Hospitalization Cumulative Rates (per 100,000) by Age-Group and Admission Week, 2018-2019 Season



*Note: Certain years have a 53rd week (e.g., season 2014-15) based on CDCs MMWR Weeks.