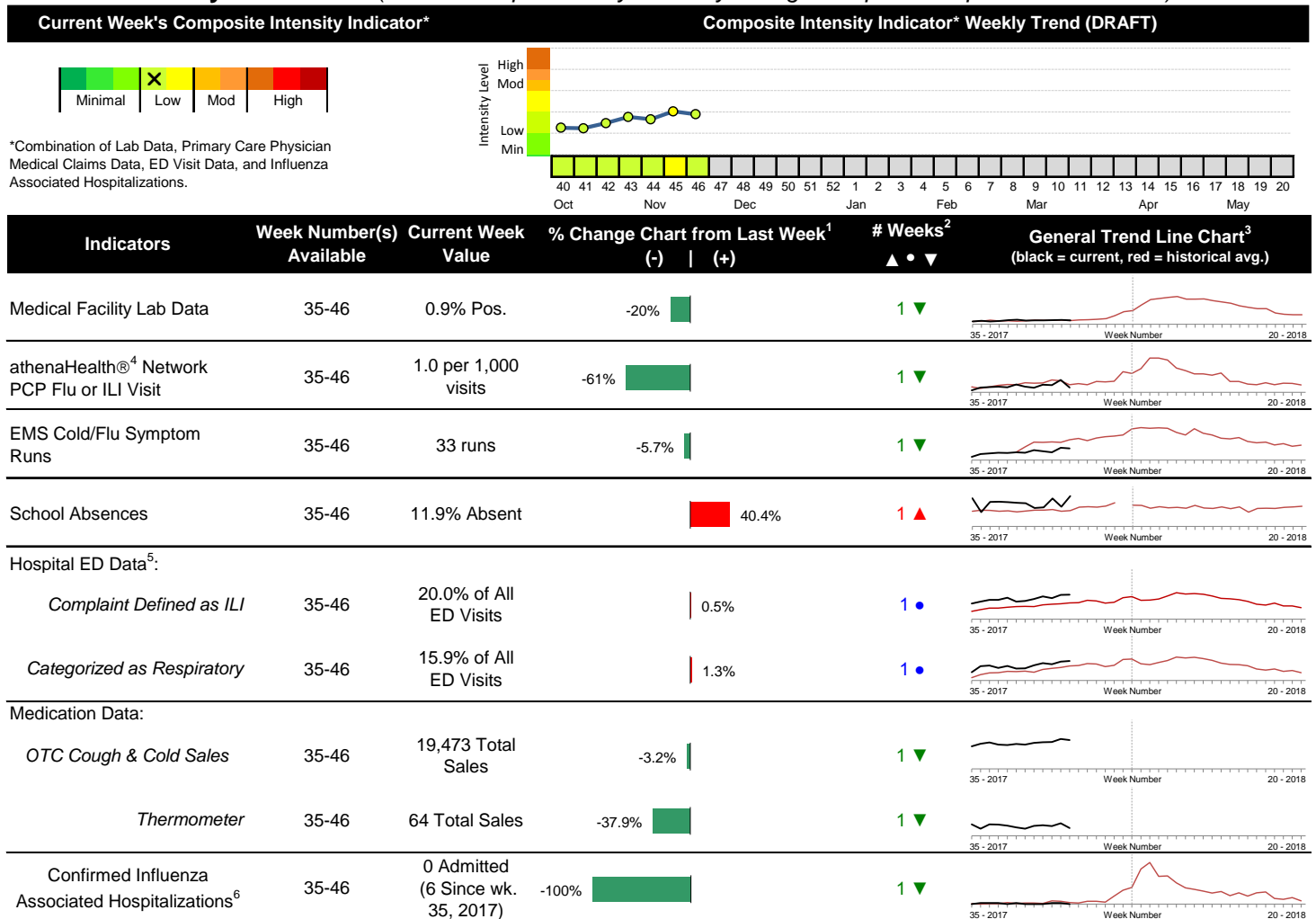


### Highlights

- In week 46 of 2018, the individual local flu activity indicator trends were mixed compared to last week. As a whole, flu intensity (composite indicator) decreased slightly and continues to be low.
- Geographic spread and local intensity designation (Click [here](#) for definitions) = SPORADIC, LOW
- Local medical facility labs reported 1,229 tests run with 11 (0.9%) positive results for week 46 of 2018.
- The percentage of ED visits for both influenza-like-illness (ILI) and respiratory symptoms were stable compared to last week.
- In week 46 of 2018, trends for local over-the-counter medication category sales tracked were mixed compared to last week (decrease in cough and cold, electrolyte, thermometer, and adult anti-fever sales; stable chest rub, pediatric anti-fever, and throat lozenge sales) compared to last week.
- Updated U.S. influenza activity was not available at the time of this report. Please [visit the CDC website for specific information](#).

### Local Flu Activity Dashboard (All data are preliminary and may change as updated reports are received.)



Reportable Conditions (Cumulative Numbers as of Nov. 18, 2018)	2013	2014	2015	2016	2017	2018 YTD
Pediatric Influenza Associated Death Reported by Year (based on date of death)	0	0	0	0	0	0
Influenza Associated Hospitalizations (IAH) Reported by Admission Year <sup>6</sup>	301	875	447	293	846	995
IAH comparison by Flu Season (October - May or Weeks 35 - 20)	2013-14	2014-15	2015-16	2016-17	2017-18	2018-19*
*Current season (2018-19) is from week 35 through week 46.	486	871	265	619	1,236	6

<sup>1</sup>Interpret with caution. Indicators with small numbers subject to large weekly percentage fluctuations.

<sup>2</sup>Number of weeks "▲" = Increase (>2%), "▼" = Decrease (>2%), "•" = Stable (-2% to +2%).

<sup>3</sup>Black line is current years data. Based on data availability, red line is historical average (excluding pandemic year).

<sup>4</sup>Data Source: Medical claims data from athenaHealth® (www.athenahealth.com). Rate of Flu or ILI visits to Franklin County, OH athenaHealth® network primary care practices/physicians. Claims data are subject to filing and processing time lags. Historical data are updated when they are received.

<sup>5</sup>Franklin County, OH residents only (based on zipcode). NOTE: Excludes one hospital system included in the past due to technical changes affecting visit classification assignment and numbers.

<sup>6</sup>Confirmed cases only. Based on jurisdiction equal to Franklin County or City of Columbus and admission date available in ODRS.

## **Influenza Morbidity and Influenza-Like Illness (ILI) Reports**

In week 46, the preliminary local influenza and influenza-like-illness (ILI) visit rate to athenaHealth® providers (1.0 per 1,000 visits) decreased compared to the previous week and is below its baseline average for the week (Figure 1). The week 46 percentage of all Emergency Department (ED) visits categorized as ILI was stable compared to the previous week (Figure 3) and is above its historic baseline for the week.

Updated week 46 of 2018 U.S. ILINet data was not available at the time of this report. Nationally, during week 45 of 2018, 1.9% of patient visits reported through ILINet were due to influenza-like illness (ILI). The percentage is below the national baseline of 2.2% for week 45.

## **Laboratory Surveillance**

During week 46 of 2018, reporting Franklin County sentinel medical facility laboratories tested 1,229 specimens, with 11 (0.9%) positive (Figure 4). The total number of tests done by local reporting labs from week 35 of 2018 through week 46 of 2018 is 9,685 with 82 (0.85%) positives (41 type A, 41 type B, 0 type A and B, 0 type unknown).

Updated week 46 of 2018 U.S. Lab data was not available at the time of this report. Nationally in week 45 of 2018, clinical laboratories reported 16,335 specimens tested for influenza viruses, 189 (1.2%) of which were positive (152 type A, 37 type B). Public health laboratories reported testing 620 specimens, 94 of which were positive (84 type A – of which 57 were A(H1N1)pdm09, 6 were H3N2, and 21 were not subtyped; 10 type B – of which 4 were Yamagata lineage, 3 was Victoria lineage, and 3 where lineage was not performed). Please visit the CDC website for more information, including cumulative data.

Updated week 46 of 2018 Ohio Department of Health Lab data was not available at the time of this report. In week 45, Ohio clinical labs reported 8,572 specimens tested for influenza this season thus far. Positive results include: (2) A(H1N1)pdm09; (0) A/H3N2; (28) Flu A Not Subtyped, and (12) Flu B (through 11/10/2018). In week 45, ODH Public Health Lab reported 11 positive influenza tests from specimens sent by various submitters this season so far. Positive results include: (10) A(H1N1)pdm09; (0) A/H3N2; (1) Influenza B (through 11/10/2018). Please visit the ODH website for more information.

## **ED Respiratory Visits**

In the 46<sup>th</sup> week of 2018, the percentage of all ED visits categorized as respiratory was stable compared to the percentage seen the previous week and is above its baseline for the week (Figure 5).

## **Over-the-Counter (OTC) Medication Sales**

In week 46 of 2018, trends for local over-the-counter medication category sales tracked were mixed compared to last week (decrease in cough and cold, electrolyte, thermometer, and adult anti-fever sales; stable chest rub, pediatric anti-fever, and throat lozenge sales) compared to last week.

## **Additional Influenza Activity Web Links:**

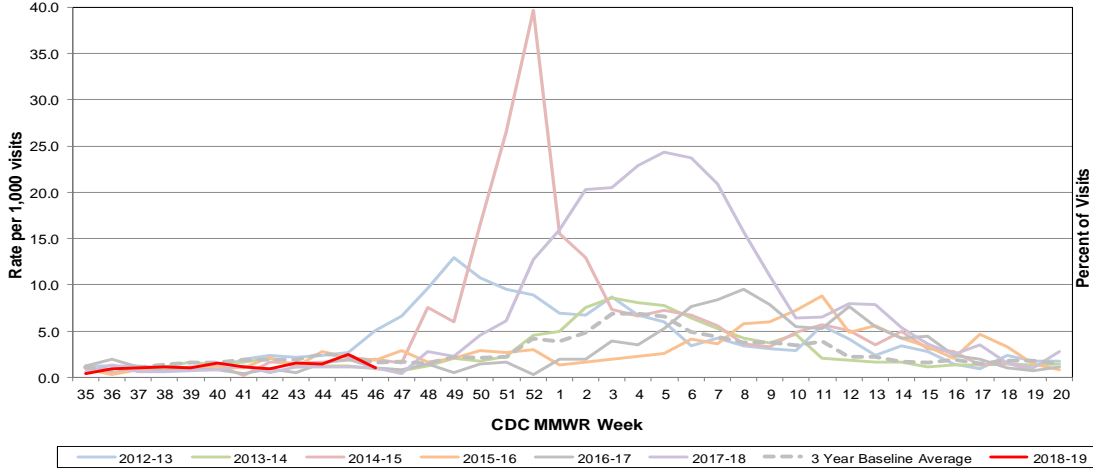
Ohio Seasonal Flu Surveillance: <http://www.odh.ohio.gov/seasflu/Ohio%20Flu%20Activity.aspx>

CDC National Seasonal Flu Surveillance Reports: <http://www.cdc.gov/flu/weekly/>

World Health Organization Situation Updates: [http://www.who.int/influenza/surveillance\\_monitoring/en/](http://www.who.int/influenza/surveillance_monitoring/en/)

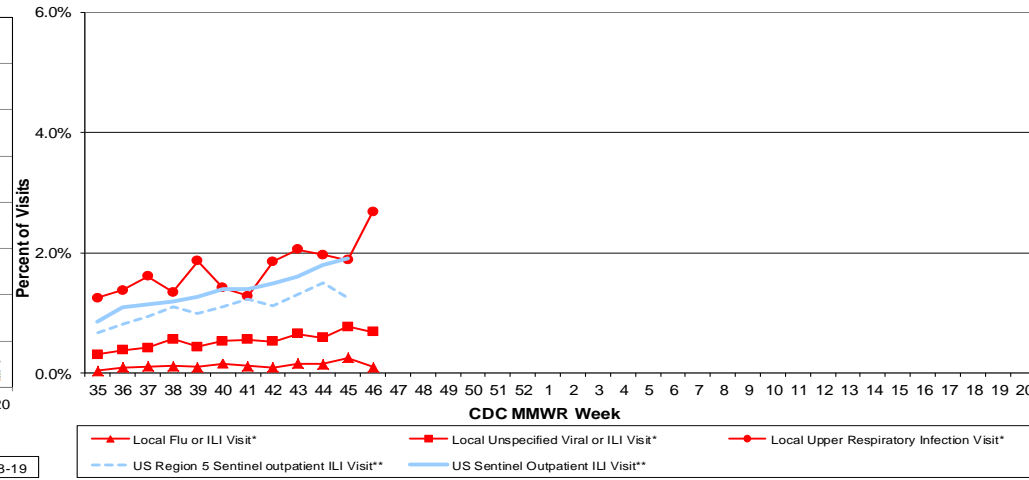
Columbus & Franklin County Influenza Monitoring Summary – Week 46, 2018 (11/11/2018-11/17/2018)

**Figure 1: Local Participating Outpatient Primary Care Provider Influenza or Influenza-Like Illness Visit Rate\*, Franklin County, OH**



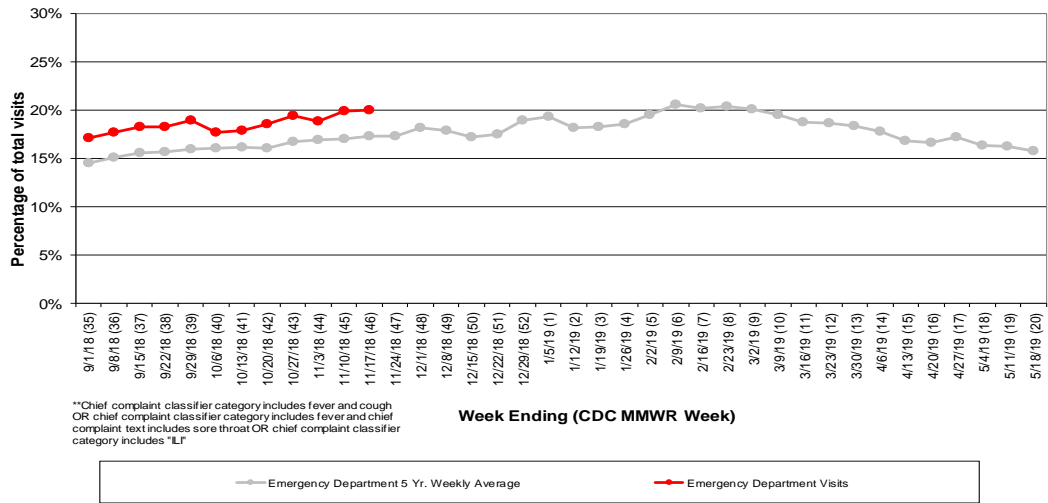
\*Source: Medical Claims data from athenaHealth®  
 Note: athenaHealth® claims data are subject to filing and processing time lags. Historical data are updated when they are received.

**Figure 2: Percentage of Local Outpatient Participating Provider\* visits for ILI and Associated Illnesses, 2018-19**



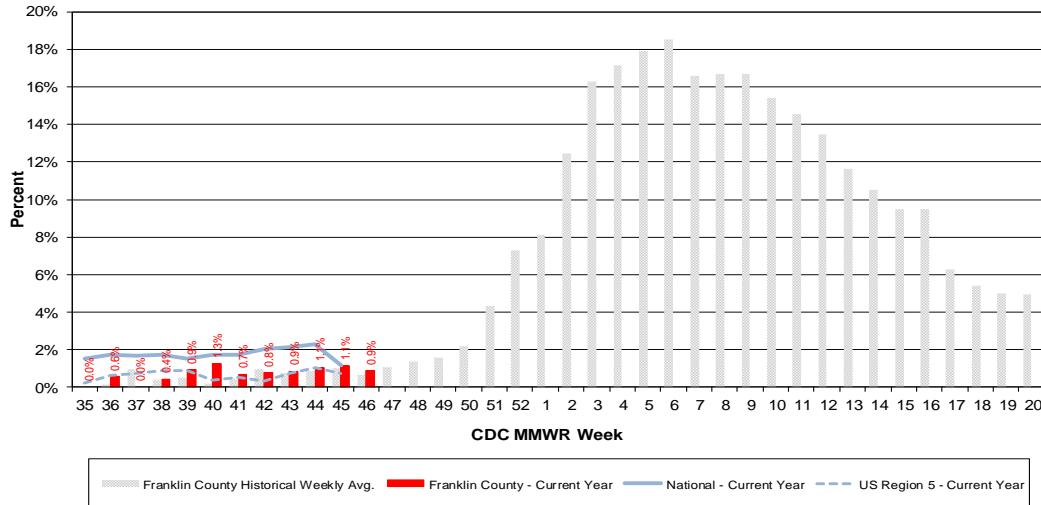
\*Source: Local medical claims data provided by athenaHealth®. Data are subject to filing and processing time lags. Historical data are updated when received.

**Figure 3: Franklin County Resident ILI Defined\*\* ED Visits, 2018-19, Franklin County, OH**



\*\*Chief complaint classifier category includes fever and cough  
 OR chief complaint classifier category includes fever and chief complaint text includes sore throat OR chief complaint classifier category includes \*LF

**Figure 4: Percentage of Local Reporting and National Laboratory Positive Influenza Tests by Week, 2018-19**



Columbus & Franklin County Influenza Monitoring Summary – Week 46, 2018 (11/11/2018-11/17/2018)

Figure 5: Franklin County Resident Respiratory ED Visits, 2018-19, Franklin County, OH

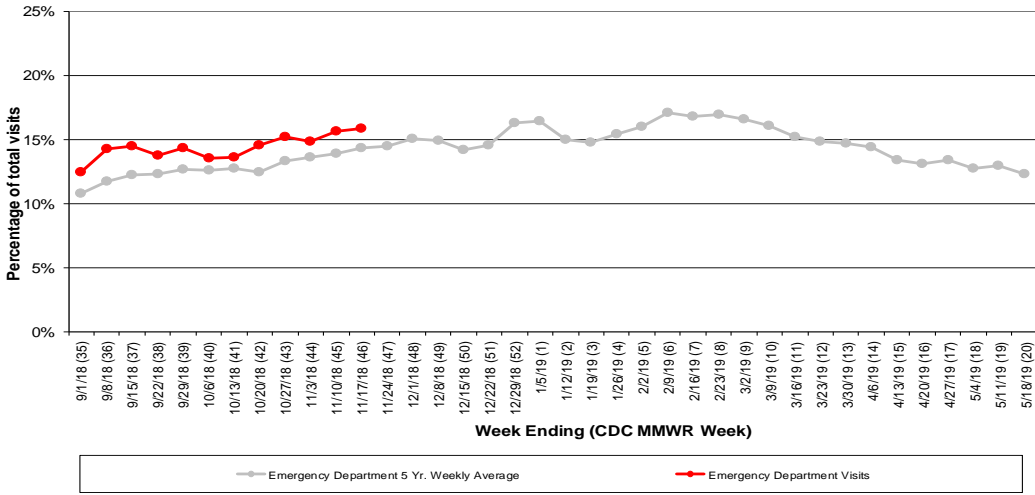


Figure 6: Selected Number of Over-the-Counter Medication Total Sales, 2018-19, Franklin County, OH

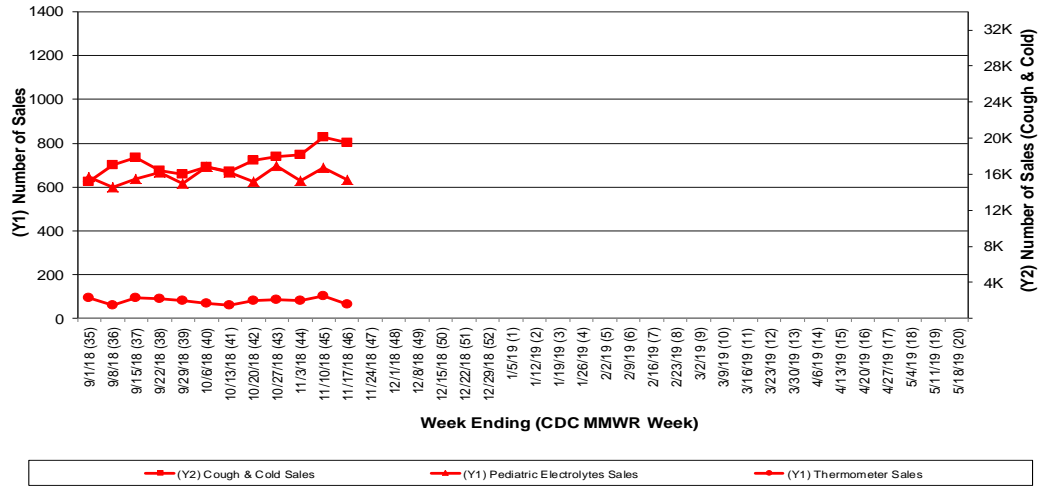
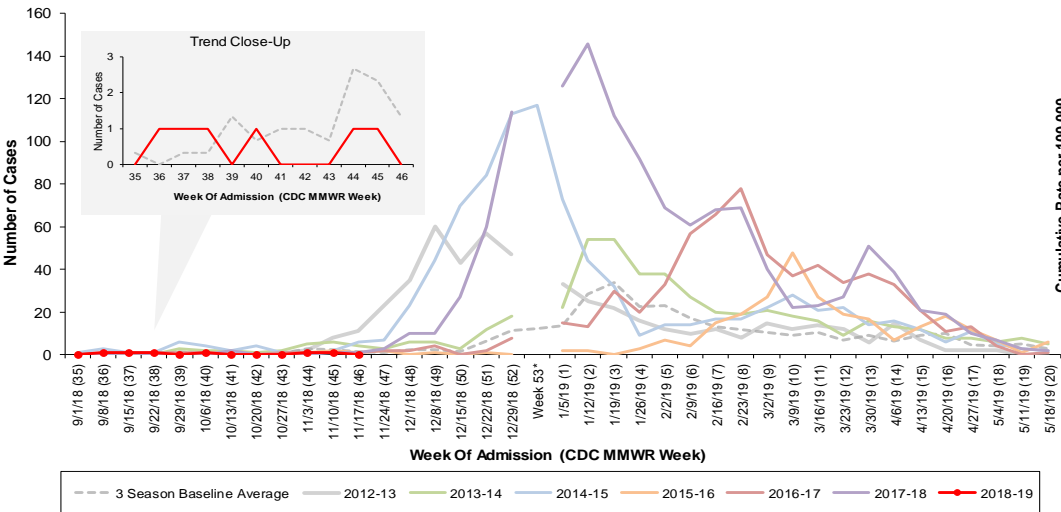


Figure 7: Columbus and Franklin County Jurisdiction Confirmed Influenza Associated Hospitalizations by Hospital Admission Week (As of 11/18/2018)



\*Note: Certain years have a 53rd week (e.g., season 2014-15) based on CDCs MMWR Weeks.

Columbus and Franklin County, OH Jurisdiction Confirmed Influenza Hospitalization Cumulative Rates (per 100,000) by Age-Group and Admission Week, 2018-2019 Season

