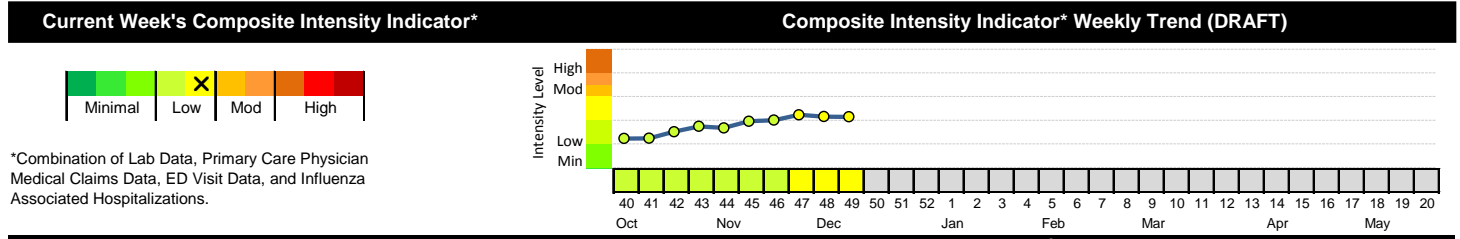


Highlights

- In week 49 of 2018, the individual local flu activity indicator trends were mixed compared to last week. As a whole, flu intensity (composite indicator) was similar to last week and continues to be low.
- Geographic spread and local intensity designation (Click [here](#) for definitions) = REGIONAL, LOW
- Local medical facility labs reported 1,521 tests run with 35 (2.3%) positive results for week 49 of 2018.
- The percentage of ED visits for influenza-like-illness (ILI) and respiratory symptoms were stable compared to last week.
- In week 49 of 2018, trends for local over-the-counter medication category sales tracked were mixed compared to last week (decrease in cough and cold, electrolyte, chest rub, and throat lozenge sales; increase in thermometer and pediatric anti-fever sales; stable adult anti-fever sales) compared to last week.
- U.S. influenza activity remained slightly elevated. Please [visit the CDC website for specific information](#).

Local Flu Activity Dashboard (All data are preliminary and may change as updated reports are received.)



Indicators	Week Number(s) Available	Current Week Value	% Change Chart from Last Week ¹ (-) (+)	# Weeks ² ▲ • ▼	General Trend Line Chart ³ (black = current, red = historical avg.)
Medical Facility Lab Data	35-49	2.3% Pos.	-25%	1 ▼	
athenaHealth® ⁴ Network PCP Flu or ILI Visit (Ohio)	35-49	3.6 per 1,000 visits	3%	1 ▲	
EMS Cold/Flu Symptom Runs	35-49	35 runs	-2.8%	2 ▼	
School Absences	35-49	11.0% Absent	-4.9%	1 ▼	
Hospital ED Data ⁵ :					
Complaint Defined as ILI	35-49	20.4% of All ED Visits	0.1%	1 •	
Categorized as Respiratory	35-49	16.2% of All ED Visits	0.4%	2 •	
Medication Data:					
OTC Cough & Cold Sales	35-49	18,439 Total Sales	-14.4%	1 ▼	
Thermometer	35-49	104 Total Sales	11.8%	3 ▲	
Confirmed Influenza Associated Hospitalizations ⁶	35-49	2 Admitted (16 Since wk. 35, 2017)	0%	1 •	

Reportable Conditions (Cumulative Numbers as of Dec. 9, 2018)	2013	2014	2015	2016	2017	2018 YTD
Pediatric Influenza Associated Death Reported by Year (based on date of death)	0	0	0	0	0	0
Influenza Associated Hospitalizations (IAH) Reported by Admission Year ⁶	301	875	447	293	846	1,003
IAH comparison by Flu Season (October - May or Weeks 35 - 20)	2013-14	2014-15	2015-16	2016-17	2017-18	2018-19*
*Current season (2018-19) is from week 35 through week 49.	486	871	265	619	1,234	16

¹Interpret with caution. Indicators with small numbers subject to large weekly percentage fluctuations.
²Number of weeks "▲" = Increase (>2%), "▼" = Decrease (>2%), "•" = Stable (-2% to +2%).
³Black line is current years data. Based on data availability, red line is historical average (excluding pandemic year).
⁴Data Source: Medical claims data from athenaHealth® (www.athenahealth.com). Rate of Flu or ILI visits to Ohio (statewide) athenaHealth® network primary care practices/physicians. Claims data are subject to filing and processing time lags. Historical data are updated when they are received.
⁵Franklin County, OH residents only (based on zipcode). NOTE: Excludes one hospital system included in the past due to technical changes affecting visit classification assignment and numbers.
⁶Confirmed cases only. Based on jurisdiction equal to Franklin County or City of Columbus and admission date available in ODRS.

Influenza Morbidity and Influenza-Like Illness (ILI) Reports

In week 49, the preliminary Ohio¹ (statewide) influenza and influenza-like-illness (ILI) visit rate to athenaHealth® providers (3.6 per 1,000 visits) increased slightly compared to the previous week and is slightly above its baseline average for the week (Figure 1). The week 49 percentage of all Emergency Department (ED) visits categorized as ILI was stable compared to the previous week (Figure 3) and is above its historic baseline for the week.

Nationally, during week 49 of 2018, 2.2% of patient visits reported through ILINet were due to influenza-like illness (ILI). The percentage is similar to the national baseline of 2.2% for week 49.

Laboratory Surveillance

During week 49 of 2018, reporting Franklin County sentinel medical facility laboratories tested 1,521 specimens, with 35 (2.3%) positive (Figure 4). The total number of tests done by local reporting labs from week 35 of 2018 through week 49 of 2018 is 14,083 with 200 (1.4%) positives (133 type A, 65 type B, 0 type A and B, 2 type unknown).

Nationally in week 49 of 2018, clinical laboratories reported 18,516 specimens tested for influenza viruses, 665 (3.6%) of which were positive (613 type A, 52 type B). Public health laboratories reported testing 772 specimens, 207 of which were positive (196 type A – of which 148 were A(H1N1)pdm09, 35 were H3N2, and 13 were not subtyped; 11 type B – of which 4 were Yamagata lineage, 2 were Victoria lineage, and 5 where lineage was not performed). Please visit the CDC website for more information, including cumulative data.

In week 49, Ohio clinical labs reported 16,253 specimens tested for influenza this season thus far. Positive results include: (10) A(H1N1)pdm09; (1) A/H3N2; (148) Flu A Not Subtyped, and (20) Flu B (through 12/08/2018). In week 49, ODH Public Health Lab reported 26 positive influenza tests from specimens sent by various submitters this season so far. Positive results include: (24) A(H1N1)pdm09; (1) A/H3N2; (1) Influenza B (through 12/08/2018). Please visit the ODH website for more information.

ED Respiratory Visits

In the 49th week of 2018, the percentage of all ED visits categorized as respiratory was stable compared to the percentage seen the previous week and is above its baseline for the week (Figure 5).

Over-the-Counter (OTC) Medication Sales

In week 49 of 2018, trends for local over-the-counter medication category sales tracked were mixed compared to last week (decrease in cough and cold, electrolyte, chest rub, and throat lozenge sales; increase in thermometer and pediatric anti-fever sales; stable adult anti-fever sales) compared to last week.

Additional Influenza Activity Web Links:

Ohio Seasonal Flu Surveillance: <https://odh.ohio.gov>

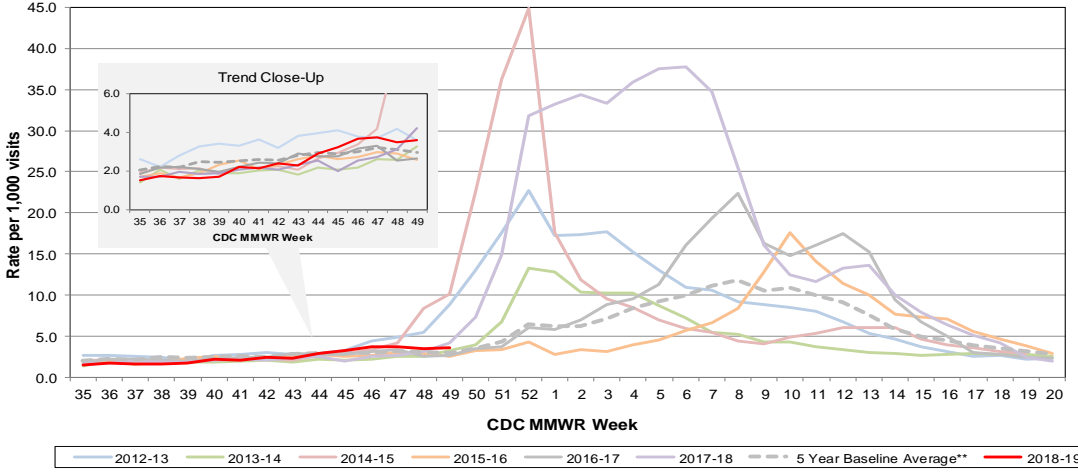
CDC National Seasonal Flu Surveillance Reports: <http://www.cdc.gov/flu/weekly/>

World Health Organization Situation Updates: http://www.who.int/influenza/surveillance_monitoring/en/

¹Note: County level athenaHealth® network primary care medical claims data is no longer available.

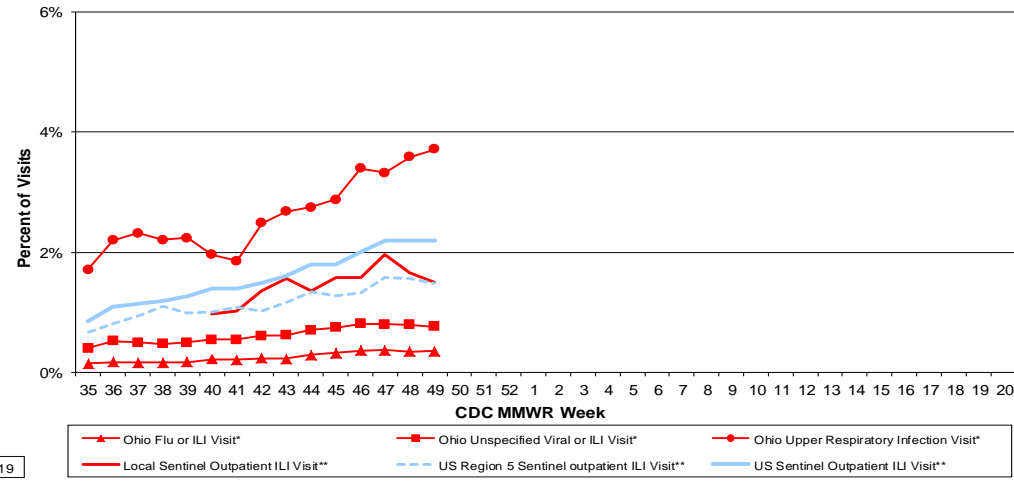
Columbus & Franklin County Influenza Monitoring Summary – Week 49, 2018 (12/2/2018-12/8/2018)

Figure 1: Ohio Outpatient Primary Care Provider Influenza or Influenza-Like-Illness Visit Rate*



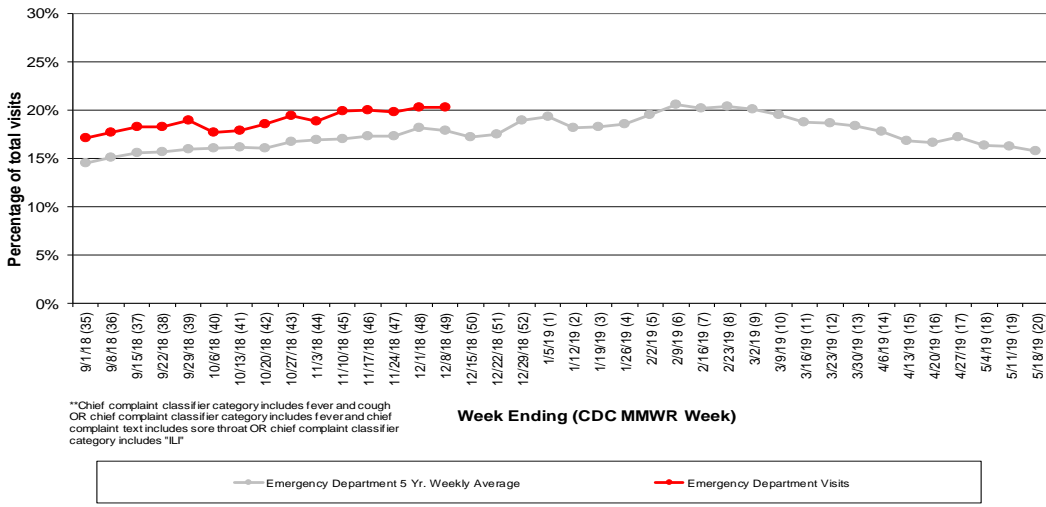
*Source: Ohio (Statewide) medical claims data from athenaHealth®
 **Seasons : 2010-11, 2011-12, 2013-14, 2015-16, 2016-17
 Note: athenaHealth® claims data are subject to filing and processing time lags. Historical data are updated when they are received.

Figure 2: Percentage of Ohio Outpatient Participating Provider* and CDC National and Local Outpatient Sentinel Health Care Provider Site visits for ILI and Associated Illnesses, 2018-19**



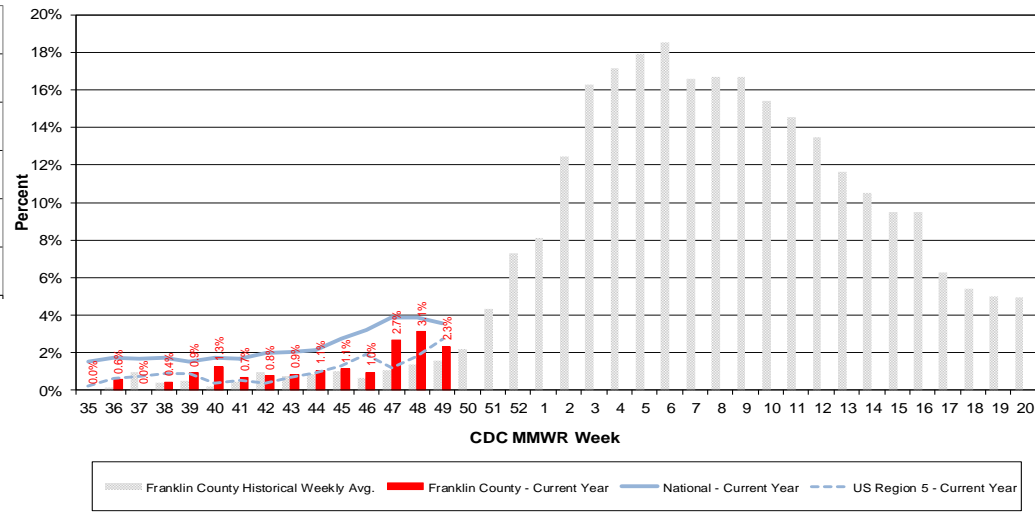
*Source: Ohio (statewide) medical claims data provided by athenaHealth®. Data are subject to filing and processing time lags. Historical data are updated when received.
 **Source: U.S. Outpatient Influenza-like Illness Surveillance Network (ILINet) sentinel provider visits.

Figure 3: Franklin County Resident ILI Defined ED Visits, 2018-19, Franklin County, OH**



**Chief complaint classifier category includes fever and cough OR chief complaint classifier category includes fever and chief complaint text includes sore throat OR chief complaint classifier category includes "ILI"

Figure 4: Percentage of Local Reporting and National Laboratory Positive Influenza Tests by Week, 2018-19



Columbus & Franklin County Influenza Monitoring Summary – Week 49, 2018 (12/2/2018-12/8/2018)

Figure 5: Franklin County Resident Respiratory ED Visits, 2018-19, Franklin County, OH

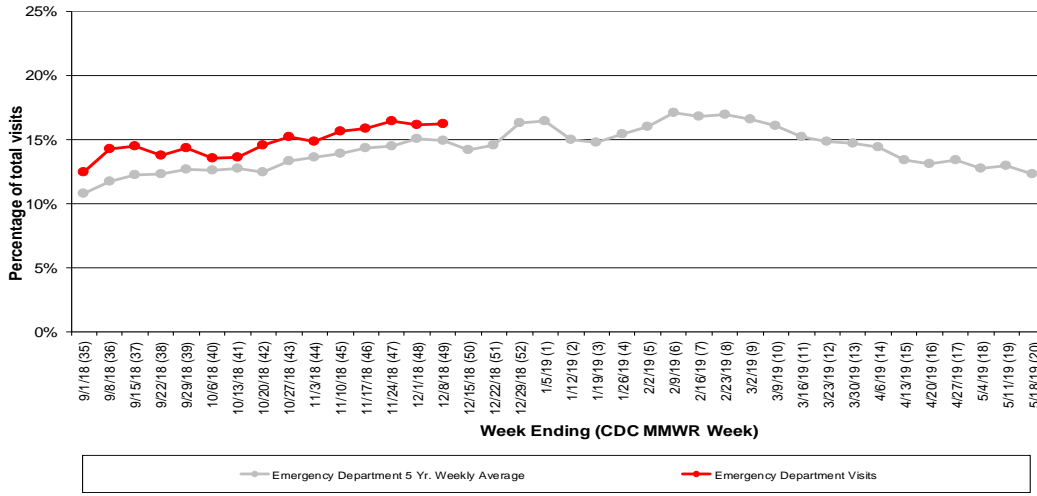


Figure 6: Selected Number of Over-the-Counter Medication Total Sales, 2018-19, Franklin County, OH

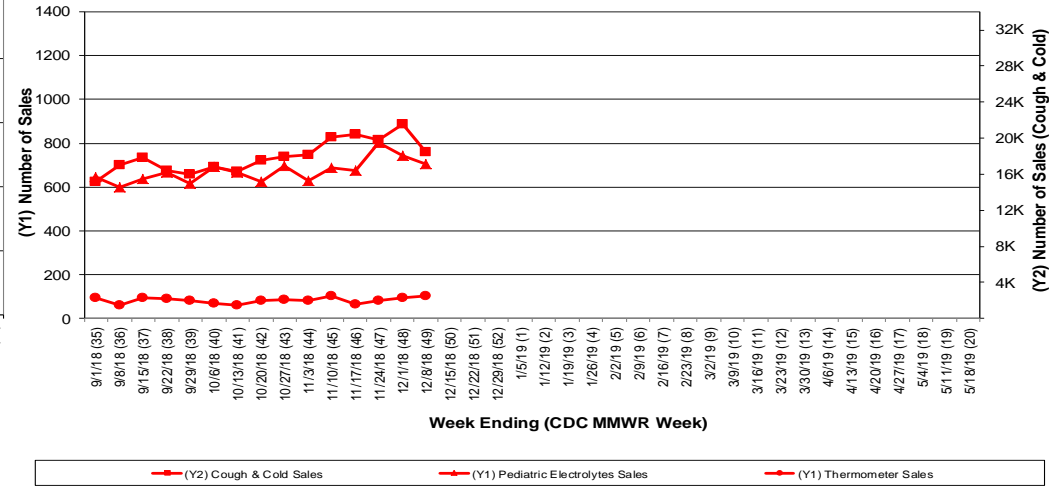
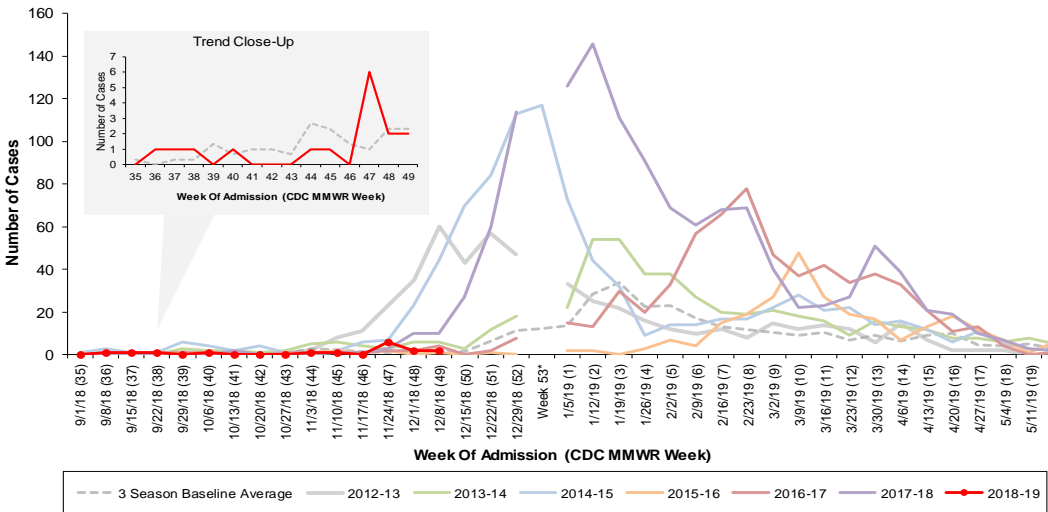
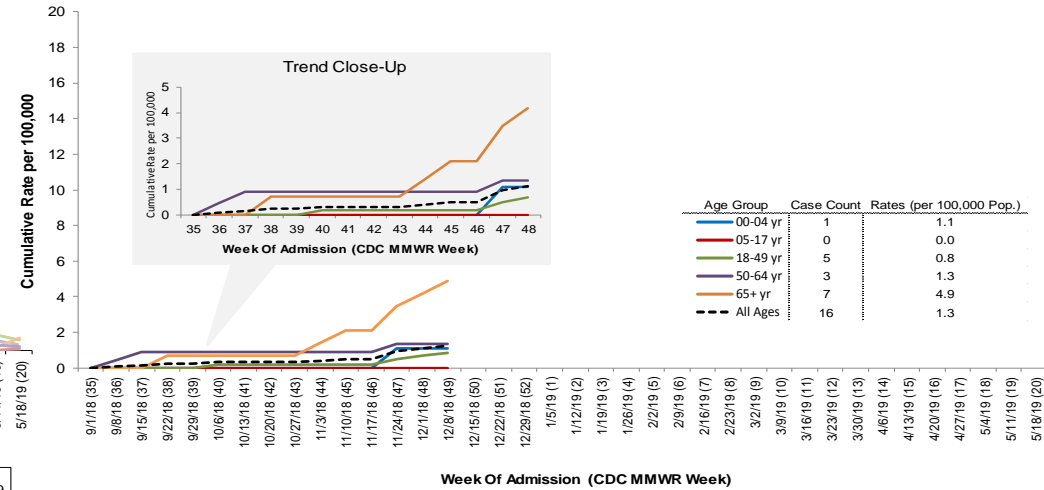


Figure 7: Columbus and Franklin County Jurisdiction Confirmed Influenza Associated Hospitalizations by Hospital Admission Week (As of 12/9/2018)



Columbus and Franklin County, OH Jurisdiction Confirmed Influenza Hospitalization Cumulative Rates (per 100,000) by Age-Group and Admission Week, 2018-2019 Season



*Note: Certain years have a 53rd week (e.g., season 2014-15) based on CDC's MMWR Weeks.