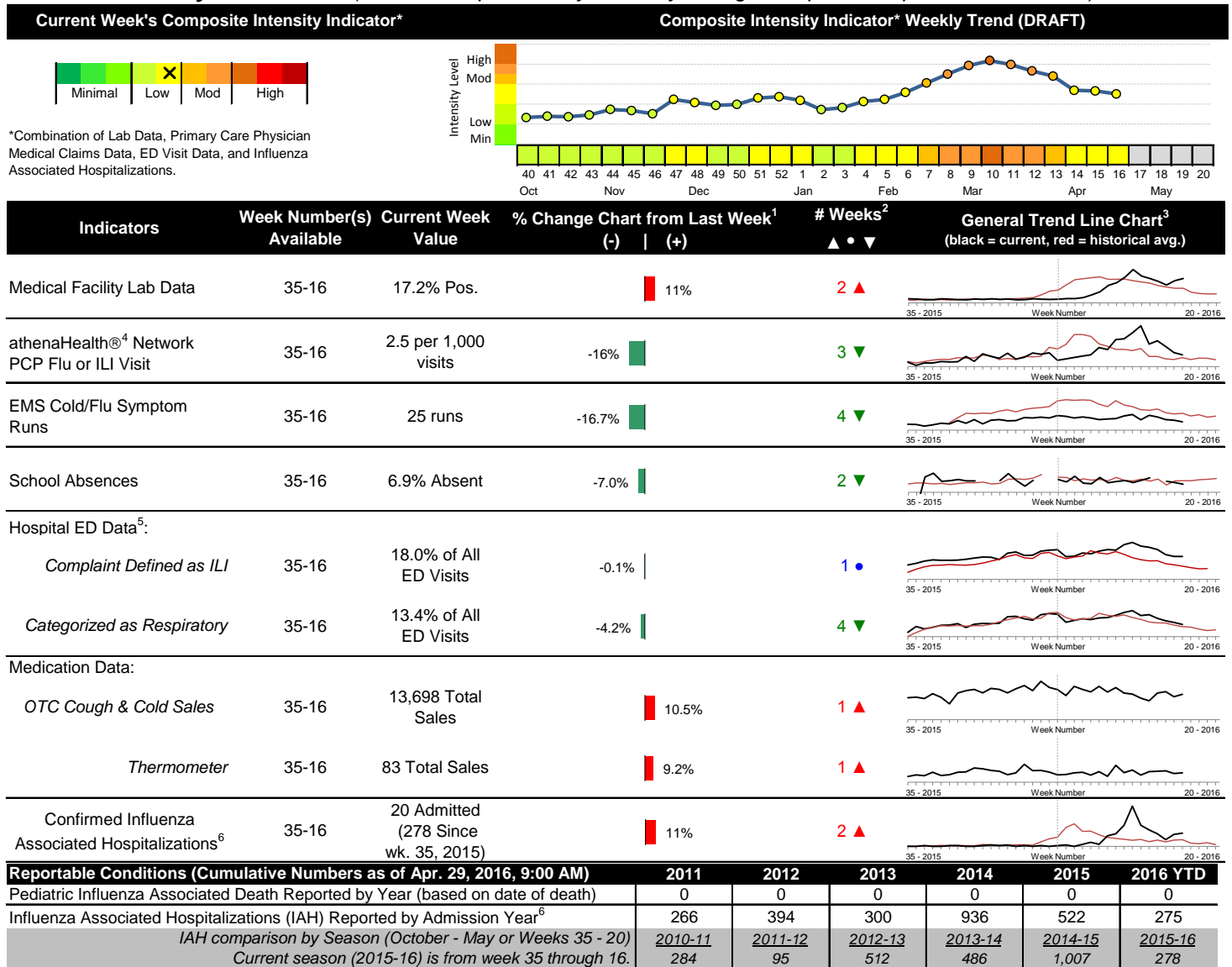


## 2015-2016 Columbus & Franklin County Seasonal Influenza Activity Weekly Summary (Week 16, Apr 17<sup>th</sup>, 2016– Apr 23<sup>rd</sup>, 2016)

### Highlights

- In week 16 of 2016, the individual local flu activity indicator trends were mixed. A late season bump in lab positives and influenza-associated hospitalizations is occurring. As a whole, flu intensity decreased slightly and was low.
- Geographic spread and local intensity designation (Click [here](#) for definitions) = REGIONAL, LOW
- Local medical facility labs reported 1,208 tests run with 208 (17.2%) positive results for week 16 of 2016. This is higher than last week's 15.4% and is higher than the weekly baseline.
- The percentage of ED visits for influenza-like-illness (ILI) was stable, while respiratory symptom visits decreased slightly compared to week 15. The percentage of ED visits for ILI is above, while the percentage of respiratory symptom visits is approaching their respective baseline averages for the week.
- In week 16 of 2016, trends for categories of local over-the-counter medication sales tracked were mixed (decrease in electrolyte and throat lozenge sales; increase in cough and cold, thermometer, chest rub, and pediatric anti-fever sales; stable adult anti-fever sales) compared to last week.
- Nationally in week 16, influenza activity decreased in the United States. Please [visit the CDC website for specific information](#) (National data is usually updated on Friday of each week).

### Local Flu Activity Dashboard *(All data are preliminary and may change as updated reports are received.)*



<sup>1</sup>Interpret with caution. Indicators with small numbers subject to large weekly percentage fluctuations.

<sup>2</sup>Number of weeks "▲" = Increase (>2%), "▼" = Decrease (>2%), "•" = Stable (-2% to +2%).

<sup>3</sup>Black line is current years data. Based on data availability, red line is historical average (excluding pandemic year).

<sup>4</sup>Data Source: Medical claims data from athenaHealth® (www.athenahealth.com). Rate of Flu or ILI visits to Franklin County, OH athenaHealth® network primary care practices/physicians. Claims data are subject to filing and processing time lags. Historical data are updated when they are received.

<sup>5</sup>Franklin County, OH residents only (based on zipcode). NOTE: Excludes one hospital system included in the past due to technical changes affecting visit classification assignment and numbers.

<sup>6</sup>Confirmed cases only. Based on jurisdiction equal to Franklin County or City of Columbus and admission date available in ODRS.

### **CDC 122-Cities Mortality Reporting System: Pneumonia and Influenza (P&I) Mortality**

In week 16 of 2016, 5.7% of all Columbus and Franklin County deaths were attributed to pneumonia and influenza. Nationally in week 16, 6.7% of deaths reported were attributed to pneumonia and influenza. This national percentage was below the national epidemic threshold for week 16.

### **Influenza Morbidity and Influenza-Like Illness (ILI) Reports**

In week 16, the preliminary local influenza and influenza-like-illness (ILI) visit rate to athenaHealth® providers (2.5 per 1,000 visits) decreased compared to the previous week and is slightly above its baseline average for the week (Figure 1). The week 16 percentage of all Emergency Department (ED) visits categorized as ILI was stable compared to the previous week (Figure 3) and is higher than its historic baseline for the week.

Nationally, during week 16 of 2016, 2.0% of patient visits reported through ILINet were due to influenza-like illness (ILI). The percentage is below the national baseline of 2.1% for week 16.

### **Laboratory Surveillance**

During week 16 of 2016, reporting Franklin County sentinel medical facility laboratories tested 1,208 specimens, with 208 (17.2%) positive (Figure 4). The total number of tests done by local reporting labs from week 35 of 2014 through week 16 of 2016 is 36,396 with 3,103 (8.5%) positives (2,553 type A, 544 type B, 6 both A and B, 0 type unknown).

Nationally in week 16 of 2016, clinical laboratories reported 14,806 specimens tested for influenza viruses, 1,857 (12.5%) of which were positive (881 type A, 976 type B). Public health laboratories reported testing 651 specimens, 224 of which were positive (105 type A – of which 76 were A(H1N1)pdm09, 25 were A/H3, and 4 were not subtyped; 119 type B – of which 45 were Yamagata lineage, 31 were Victoria lineage, and 43 where lineage was not performed). Please visit the CDC website for more information, including cumulative data since week 40.

Week 16 ODH lab data was not available at the time of this report. In week 15 of 2016, participating Ohio clinical labs reported 31,129 specimens tested for influenza this season thus far. Positive results include: (482) A(H1N1)pdm09; (13) A/H3N2; (1,750) Flu A Not Subtyped, and (543) Flu B (through 4/16/16). ODH Public Health Lab reported 530 specimens tested for influenza from various submitters this season thus far. Positive results include: (290) A(H1N1)pdm09; (10) A/H3N2; (56) Influenza B (through 4/16/16). Please visit the ODH website for more information.

### **ED Respiratory Visits**

In the 16<sup>th</sup> week of 2016, the percentage of all ED visits categorized as respiratory decreased slightly compared to the percentage seen the previous week and is slightly higher than its historic baseline for the week (Figure 5).

### **Over-the-Counter (OTC) Medication Sales**

In week 16 of 2016, trends for categories of local over-the-counter medication sales tracked were mixed (decrease in electrolyte and throat lozenge sales; increase in cough and cold, thermometer, chest rub, and pediatric anti-fever sales; stable adult anti-fever sales) compared to last week.

### **Additional Influenza Activity Web Links:**

Ohio Seasonal Flu Surveillance: <http://www.odh.ohio.gov/features/odhfeatures/seasflu/ohfluactivity.aspx>

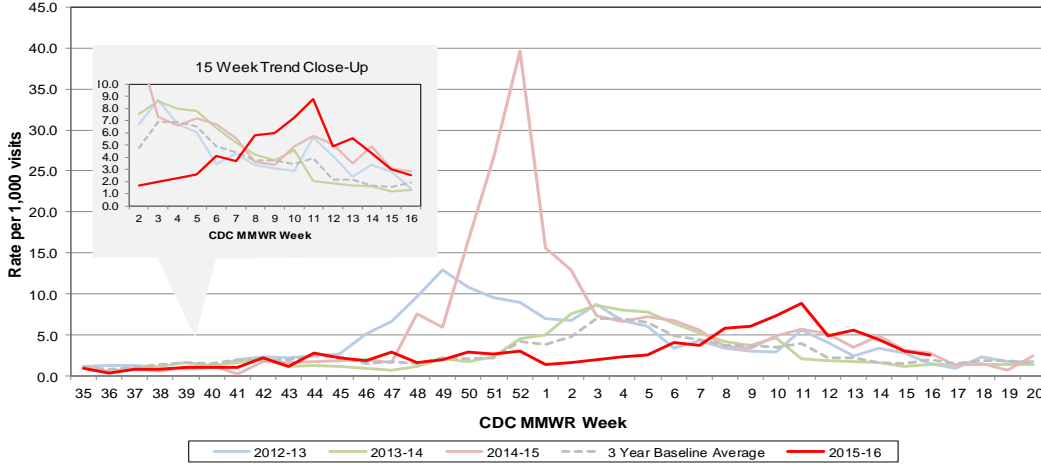
CDC National Seasonal Flu Surveillance Reports: <http://www.cdc.gov/flu/weekly/>

CDC International Flu Activity Map: <http://www.cdc.gov/flu/international/activity.htm>

World Health Organization Situation Updates: [http://www.who.int/influenza/surveillance\\_monitoring/en/](http://www.who.int/influenza/surveillance_monitoring/en/)

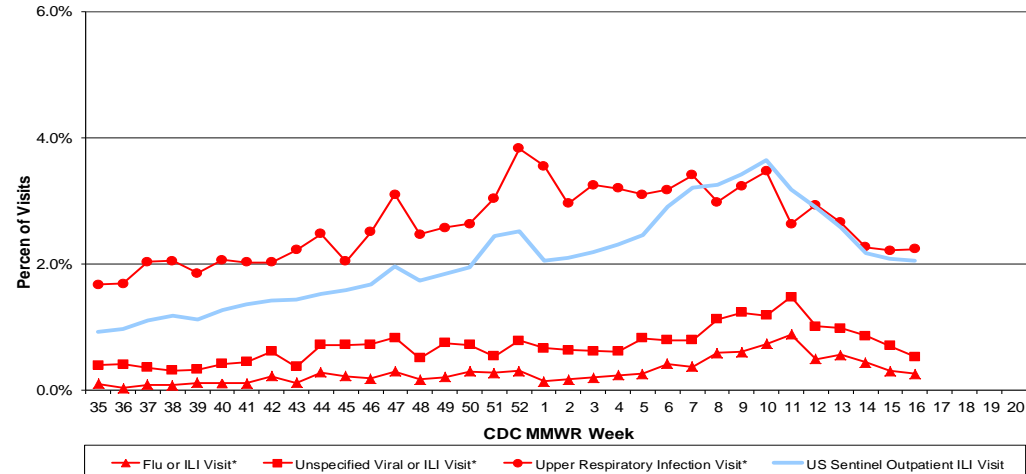
Columbus & Franklin County Influenza Monitoring Summary – Week 16, 2016 (4/17/2016-4/23/2016)

**Figure 1: Local Participating Outpatient Primary Care Provider Influenza or Influenza-Like Illness Visit Rate\*, Franklin County, OH**



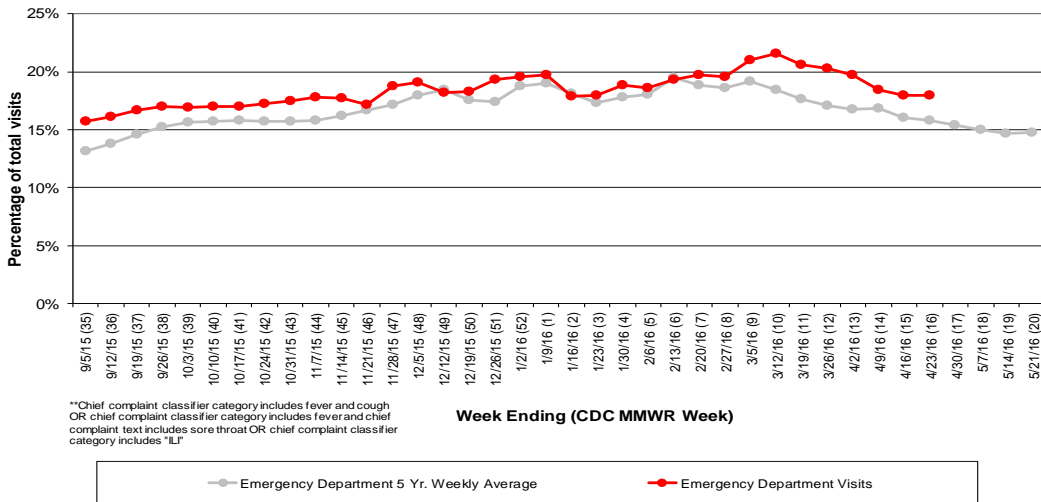
\*Source: Medical Claims data from athenaHealth®  
 Note: athenaHealth® claims data are subject to filing and processing time lags. Historical data are updated when they are received.

**Figure 2: Percentage of Local Outpatient Participating Provider\* and CDC National Outpatient Sentinel Health Care Provider Site visits for ILI and Associated Illnesses, 2015-16**



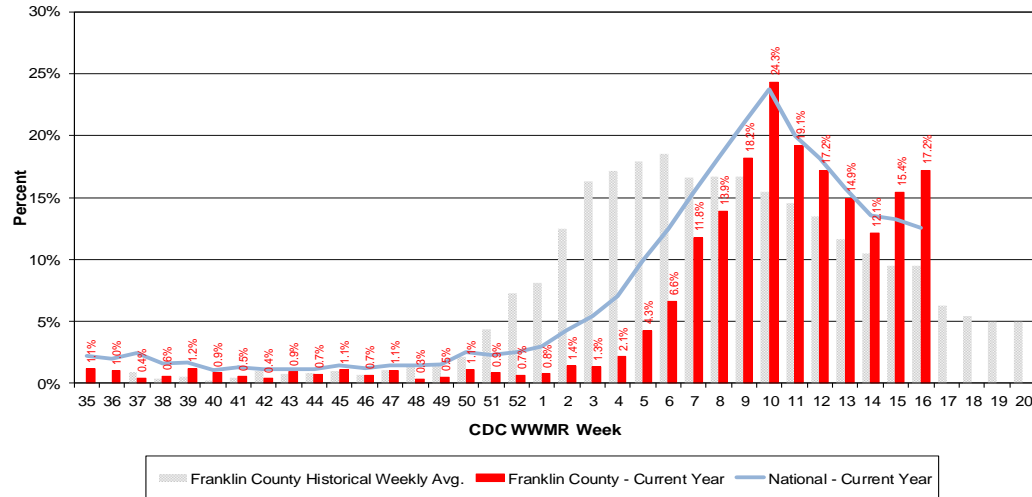
\*Source: Local medical claims data provided by athenaHealth®  
 Note: athenaHealth® claims data are subject to filing and processing time lags. Historical data are updated when they are received.

**Figure 3: Franklin County Resident ILI Defined\*\* ED Visits, 2015-16, Franklin County, OH**



\*\*Chief complaint classifier category includes fever and cough OR chief complaint classifier category includes fever and chief complaint text includes sore throat OR chief complaint classifier category includes "ILI"

**Figure 4: Percentage of Local Reporting and National Laboratory Positive Influenza Tests by Week, 2015-16**



Columbus & Franklin County Influenza Monitoring Summary – Week 16, 2016 (4/17/2016-4/23/2016)

Figure 5: Franklin County Resident Respiratory ED Visits, 2015-16, Franklin County, OH

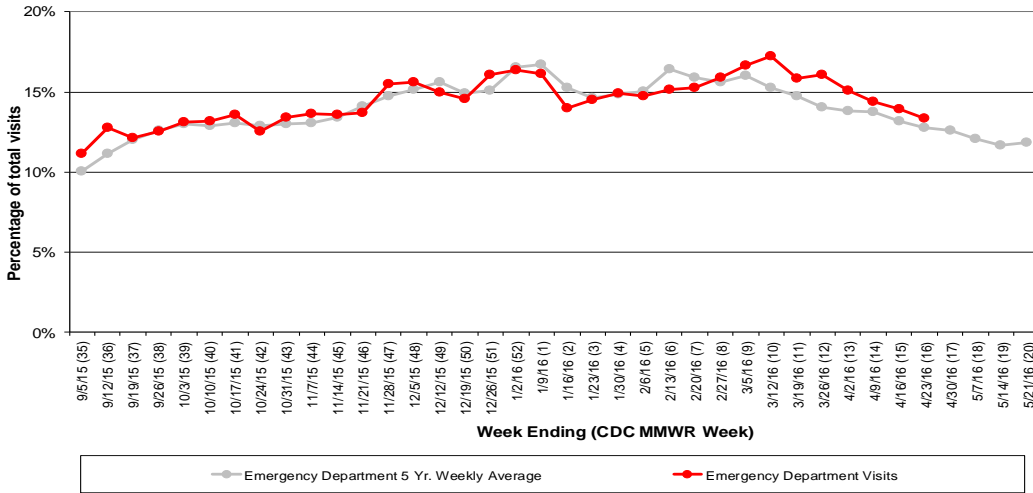


Figure 6: Selected Number of Over-the-Counter Medication Sales, 2015-16, Franklin County, OH

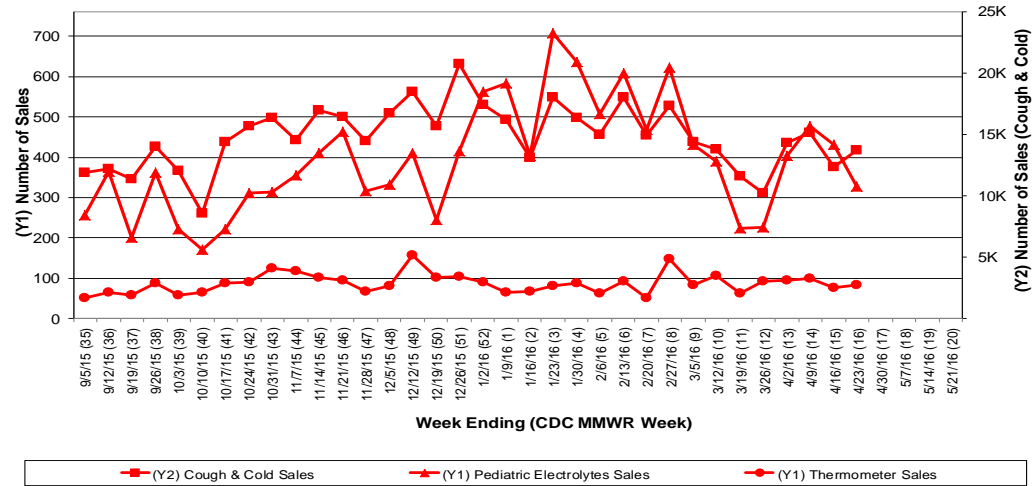
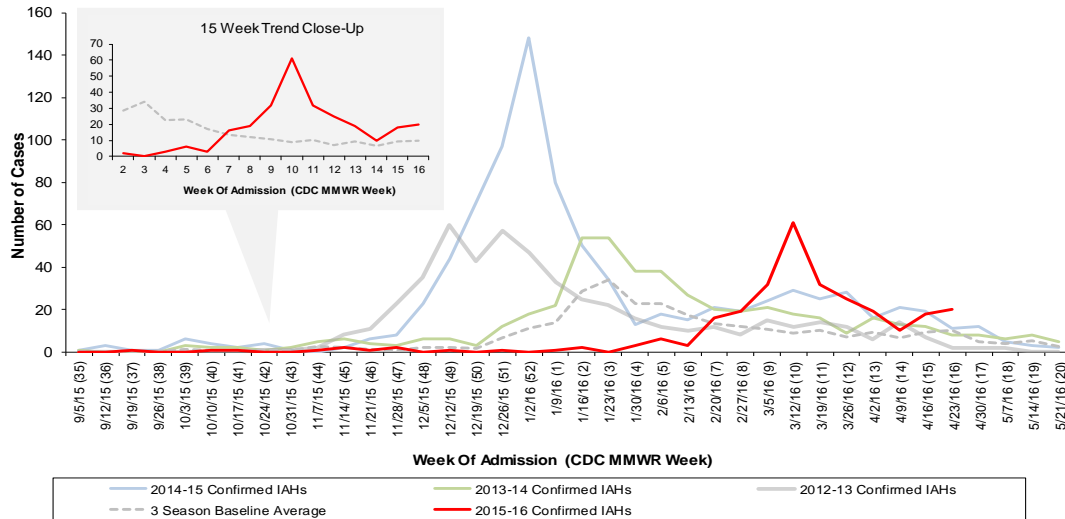


Figure 7: Franklin County Confirmed Influenza Associated Hospitalizations by Hospital Admission Week (As of 9:00 AM, 4/29/2016)



Franklin County, OH, Confirmed Influenza Hospitalization Cumulative Rates (per 100,000) by Age-Group and Admission Week, 2015-2016 Season

