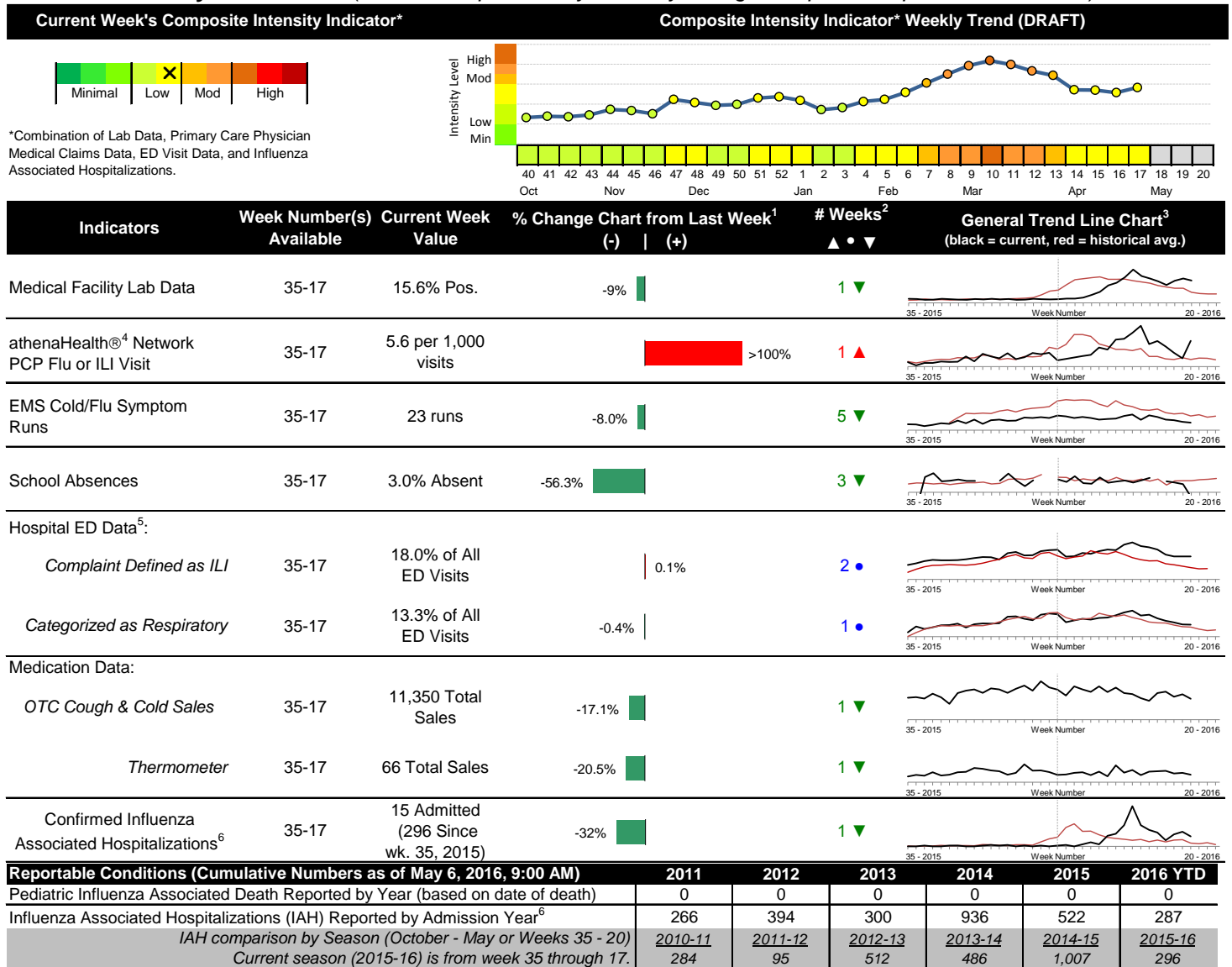


# 2015-2016 Columbus & Franklin County Seasonal Influenza Activity Weekly Summary (Week 17, Apr 24<sup>th</sup>, 2016– Apr 30<sup>th</sup>, 2016)

## Highlights

- In week 17 of 2016, the individual local flu activity indicator trends were mixed. A late season bump in primary care visit rate was seen in week 17. As a whole, flu intensity increased slightly and was low.
- Geographic spread and local intensity designation (Click [here](#) for definitions) = REGIONAL, LOW
- Local medical facility labs reported 1,140 tests run with 178 (15.6%) positive results for week 17 of 2016. This is lower than last week's 17.2% and is higher than the weekly baseline.
- The percentage of ED visits for both influenza-like-illness (ILI) and respiratory symptoms were stable compared to week 16. The percentage of ED visits for ILI is above, while the percentage of respiratory symptom visits is approaching their respective baseline averages for the week.
- In week 17 of 2016, trends for all categories of local over-the-counter medication sales tracked decreased (decrease in cough and cold, electrolyte, thermometer, chest rub, pediatric anti-fever sales, adult anti-fever, and throat lozenge sales) compared to last week.
- Nationally in week 17, influenza activity decreased in the United States. Please [visit the CDC website for specific information](#) (National data is usually updated on Friday of each week).

## Local Flu Activity Dashboard (All data are preliminary and may change as updated reports are received.)



<sup>1</sup>Interpret with caution. Indicators with small numbers subject to large weekly percentage fluctuations.

<sup>2</sup>Number of weeks "▲" = Increase (>2%), "▼" = Decrease (>2%), "•" = Stable (-2% to +2%).

<sup>3</sup>Black line is current years data. Based on data availability, red line is historical average (excluding pandemic year).

<sup>4</sup>Data Source: Medical claims data from athenaHealth® (www.athenahealth.com). Rate of Flu or ILI visits to Franklin County, OH athenaHealth® network primary care practices/physicians. Claims data are subject to filing and processing time lags. Historical data are updated when they are received.

<sup>5</sup>Franklin County, OH residents only (based on zipcode). NOTE: Excludes one hospital system included in the past due to technical changes affecting visit classification assignment and numbers.

<sup>6</sup>Confirmed cases only. Based on jurisdiction equal to Franklin County or City of Columbus and admission date available in ODRS.

### **CDC 122-Cities Mortality Reporting System: Pneumonia and Influenza (P&I) Mortality**

In week 17 of 2016, 7.5% of all Columbus and Franklin County deaths were attributed to pneumonia and influenza. Nationally in week 17, 6.8% of deaths reported were attributed to pneumonia and influenza. This national percentage was below the national epidemic threshold for week 17.

### **Influenza Morbidity and Influenza-Like Illness (ILI) Reports**

In week 17, the preliminary local influenza and influenza-like-illness (ILI) visit rate to athenaHealth® providers (5.6 per 1,000 visits) increased compared to the previous week and is above its baseline average for the week (Figure 1). The week 17 percentage of all Emergency Department (ED) visits categorized as ILI was stable compared to the previous week (Figure 3) and is higher than its historic baseline for the week.

Nationally, during week 17 of 2016, 1.8% of patient visits reported through ILINet were due to influenza-like illness (ILI). The percentage is below the national baseline of 2.1% for week 17.

### **Laboratory Surveillance**

During week 17 of 2016, reporting Franklin County sentinel medical facility laboratories tested 1,140 specimens, with 178 (15.6%) positive (Figure 4). The total number of tests done by local reporting labs from week 35 of 2014 through week 17 of 2016 is 37,536 with 3,281 (8.7%) positives (2,652 type A, 623 type B, 6 both A and B, 0 type unknown).

Nationally in week 17 of 2016, clinical laboratories reported 12,818 specimens tested for influenza viruses, 1,442 (11.2%) of which were positive (550 type A, 892 type B). Public health laboratories reported testing 547 specimens, 175 of which were positive (82 type A – of which 48 were A(H1N1)pdm09, 30 were A/H3, and 4 were not subtyped; 93 type B – of which 37 were Yamagata lineage, 32 were Victoria lineage, and 24 where lineage was not performed). Please visit the CDC website for more information, including cumulative data since week 40.

In week 17 of 2016, participating Ohio clinical labs reported 33,622 specimens tested for influenza this season thus far. Positive results include: (505) A(H1N1)pdm09; (17) A/H3N2; (1,871) Flu A Not Subtyped, and (690) Flu B (through 4/30/16). ODH Public Health Lab reported 574 specimens tested for influenza from various submitters this season thus far. Positive results include: (315) A(H1N1)pdm09; (15) A/H3N2; (64) Influenza B (through 4/30/16). Please visit the ODH website for more information.

### **ED Respiratory Visits**

In the 17<sup>th</sup> week of 2016, the percentage of all ED visits categorized as respiratory was stable compared to the percentage seen the previous week and is slightly higher than its historic baseline for the week (Figure 5).

### **Over-the-Counter (OTC) Medication Sales**

In week 17 of 2016, trends for all categories of local over-the-counter medication sales tracked decreased (decrease in cough and cold, electrolyte, thermometer, chest rub, pediatric anti-fever sales, adult anti-fever, and throat lozenge sales) compared to last week.

### **Additional Influenza Activity Web Links:**

Ohio Seasonal Flu Surveillance: <http://www.odh.ohio.gov/features/odhfeatures/seasflu/ohfluactivity.aspx>

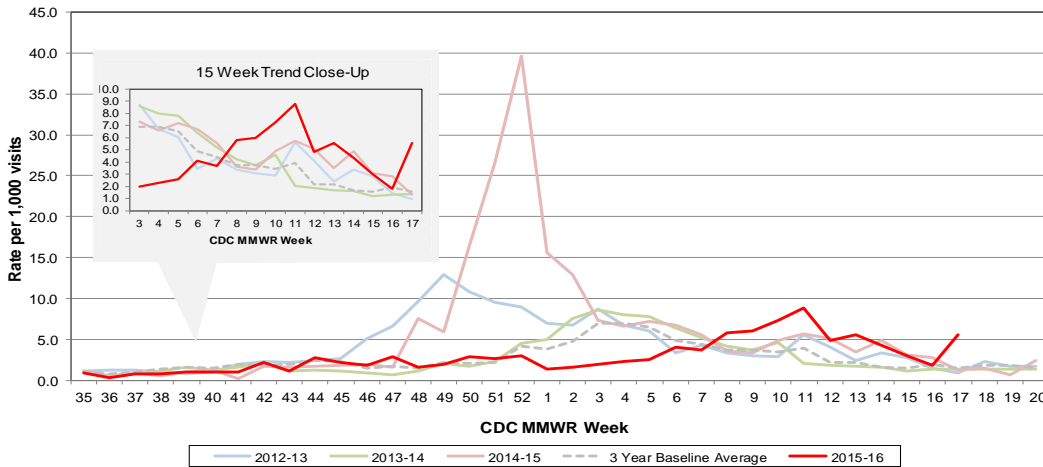
CDC National Seasonal Flu Surveillance Reports: <http://www.cdc.gov/flu/weekly/>

CDC International Flu Activity Map: <http://www.cdc.gov/flu/international/activity.htm>

World Health Organization Situation Updates: [http://www.who.int/influenza/surveillance\\_monitoring/en/](http://www.who.int/influenza/surveillance_monitoring/en/)

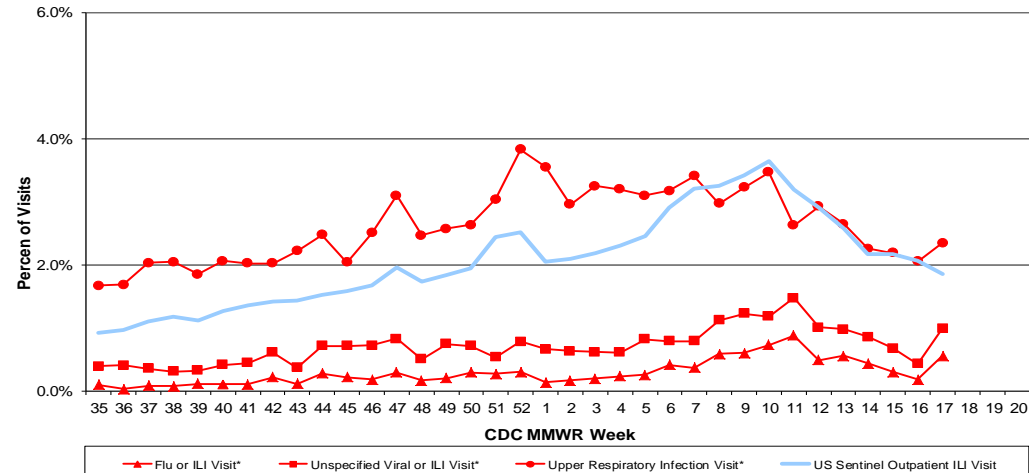
Columbus & Franklin County Influenza Monitoring Summary – Week 17, 2016 (4/24/2016-4/30/2016)

**Figure 1: Local Participating Outpatient Primary Care Provider Influenza or Influenza-Like Illness Visit Rate\*, Franklin County, OH**



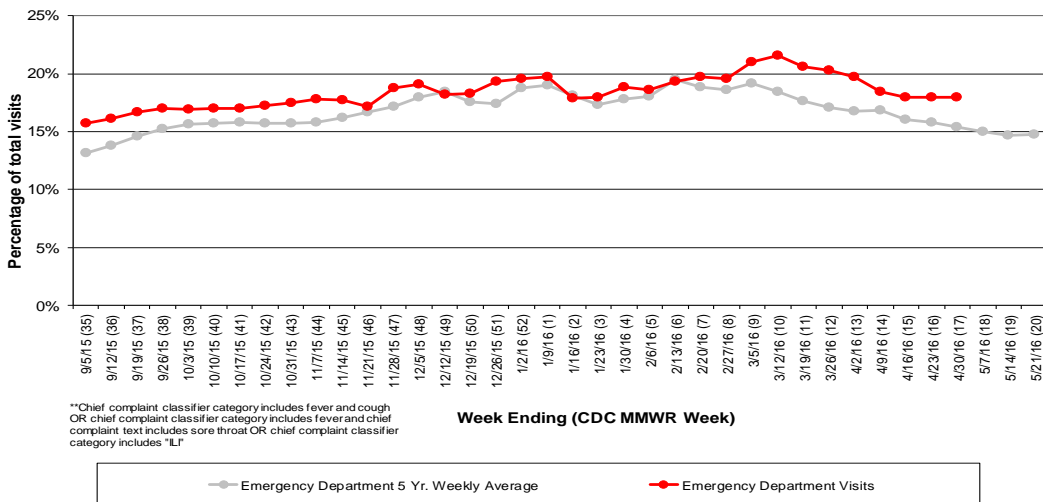
\*Source: Medical Claims data from athenaHealth®  
 Note: athenaHealth® claims data are subject to filing and processing time lags. Historical data are updated when they are received.

**Figure 2: Percentage of Local Outpatient Participating Provider\* and CDC National Outpatient Sentinel Health Care Provider Site visits for ILI and Associated Illnesses, 2015-16**



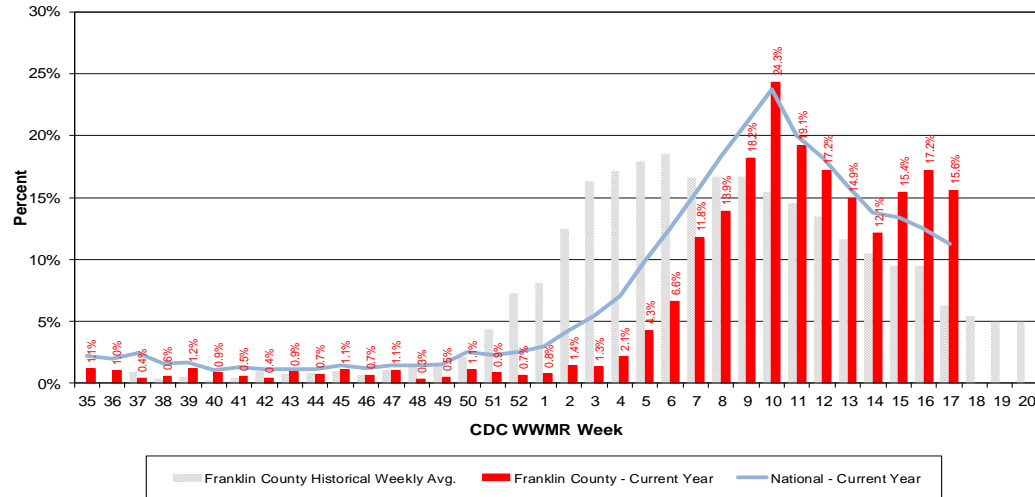
\*Source: Local medical claims data provided by athenaHealth®  
 Note: athenaHealth® claims data are subject to filing and processing time lags. Historical data are updated when they are received.

**Figure 3: Franklin County Resident ILI Defined\*\* ED Visits, 2015-16, Franklin County, OH**



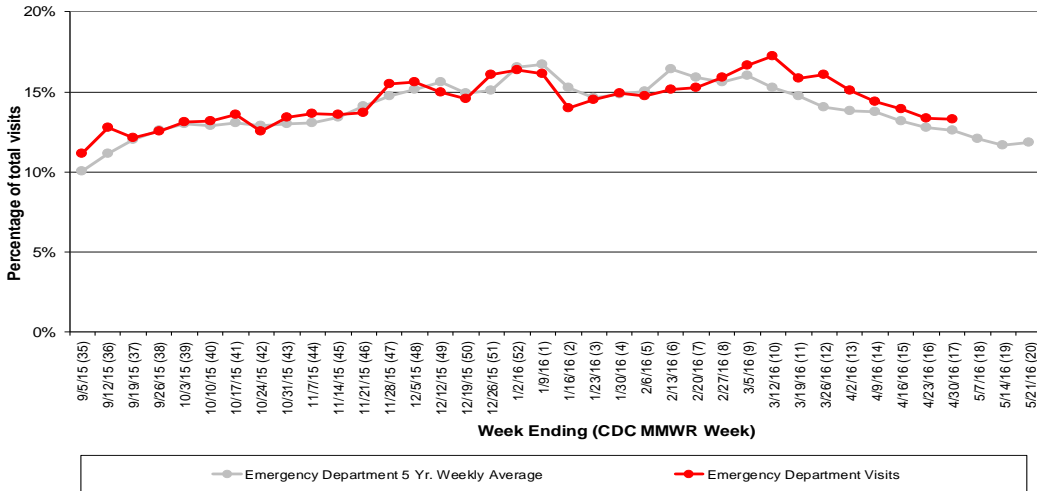
\*\*Chief complaint classifier category includes fever and cough OR chief complaint classifier category includes fever and chief complaint text includes sore throat OR chief complaint classifier category includes "LI"

**Figure 4: Percentage of Local Reporting and National Laboratory Positive Influenza Tests by Week, 2015-16**

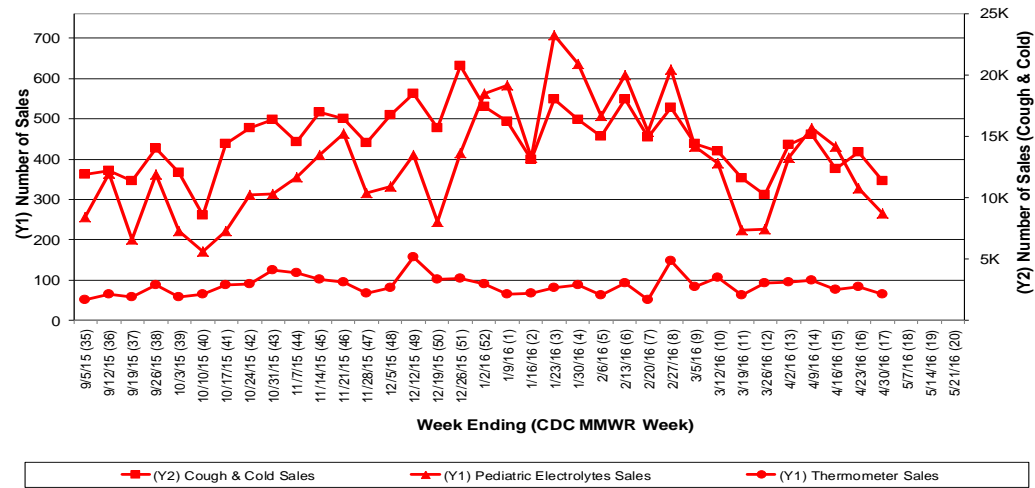


## Columbus & Franklin County Influenza Monitoring Summary – Week 17, 2016 (4/24/2016-4/30/2016)

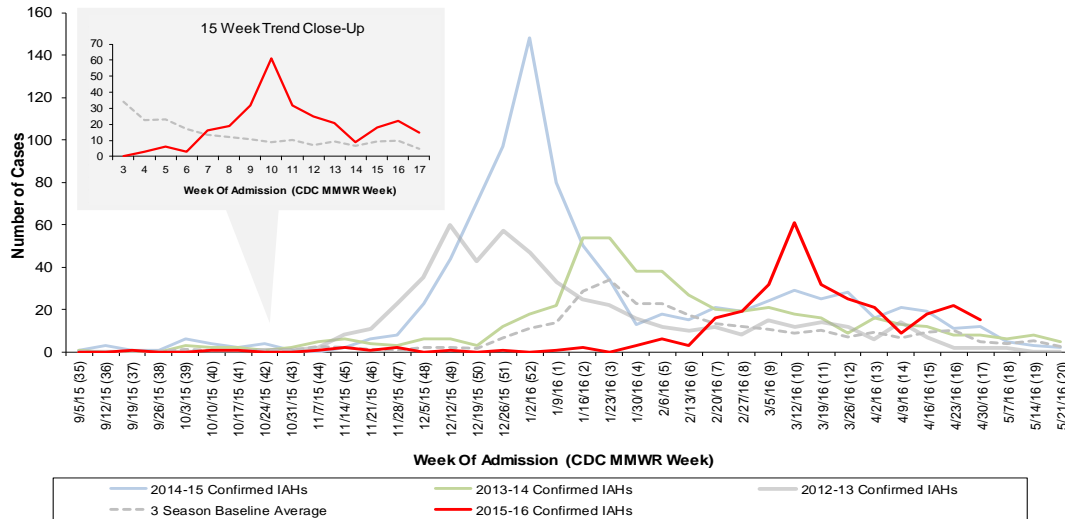
**Figure 5: Franklin County Resident Respiratory ED Visits, 2015-16, Franklin County, OH**



**Figure 6: Selected Number of Over-the-Counter Medication Sales, 2015-16, Franklin County, OH**



**Figure 7: Franklin County Confirmed Influenza Associated Hospitalizations by Hospital Admission Week (As of 9:00 AM, 5/6/2016)**



**Franklin County, OH, Confirmed Influenza Hospitalization Cumulative Rates (per 100,000) by Age-Group and Admission Week, 2015-2016 Season**

