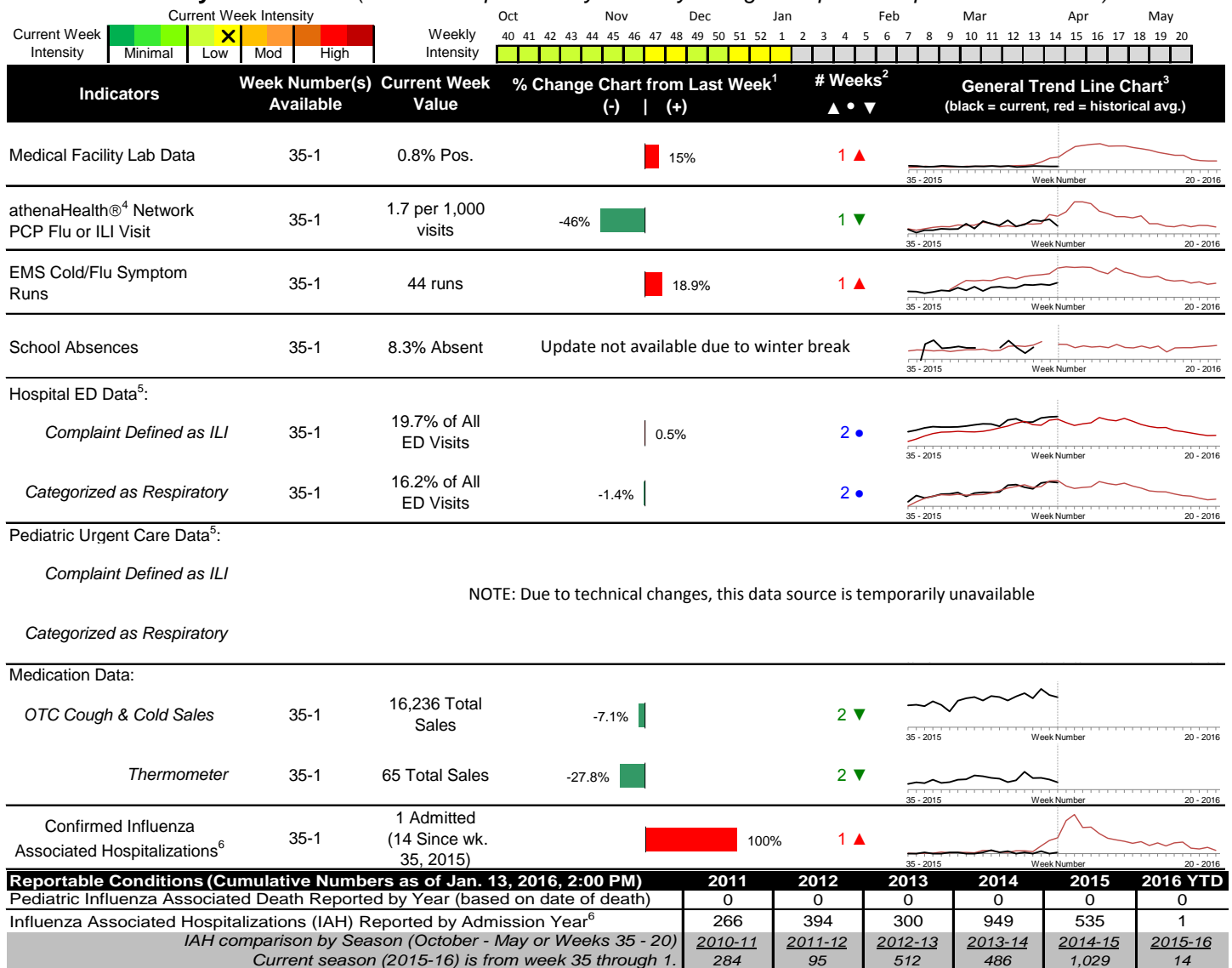


2015-2016 Columbus & Franklin County Seasonal Influenza Activity Weekly Summary (Week 1, Jan 3rd, 2016– Jan 9th, 2016)

Highlights

- In week 1 of 2016, the individual local flu activity indicator trends were mixed. Overall, local flu intensity was slightly higher compared to the previous week and continues to be low.
- Geographic spread and local intensity designation (Click [here](#) for definitions) = SPORADIC, LOW
- Local medical facility labs reported 1,027 tests run with 8 (0.8%) positive results for week 1 of 2016. This is slightly higher than last week's 0.7% and is lower than the weekly baseline.
- The percentage of ED visits for influenza-like-illness (ILI), as well as respiratory symptoms, were both stable compared to week 52. The percentage of ED visits for ILI is slightly above its baseline average for the week, while respiratory symptom visits are similar to its baseline average for the week.
- In week 1 of 2016, the majority of trends for all local over-the-counter medication sales tracked were mixed (decrease in cough and cold, thermometer, pediatric anti-fever and adult anti-fever sales; increase in electrolyte and chest rub sales; stable throat lozenge sales) compared to last week.
- Nationally in week 1, influenza activity increased slightly in the United States. Please [visit the CDC website for specific information](#) (National data is usually updated on Friday of each week).

Local Flu Activity Dashboard *(All data are preliminary and may change as updated reports are received.)*



¹Interpret with caution. Indicators with small numbers subject to large weekly percentage fluctuations.

²Number of weeks "▲" = Increase (>2%), "▼" = Decrease (>2%), "●" = Stable (-2% to +2%).

³Black line is current years data. Based on data availability, red line is historical average (excluding pandemic year).

⁴Data Source: Medical claims data from athenaHealth® (www.athenahealth.com). Rate of Flu or ILI visits to Franklin County, OH athenaHealth® network primary care practices/physicians. Claims data are subject to filing and processing time lags. Historical data are updated when they are received.

⁵Franklin County, OH residents only (based on zipcode). NOTE: Excludes one hospital system included in the past due to technical changes affecting visit classification assignment and numbers.

⁶Confirmed cases only. Based on jurisdiction equal to Franklin County or City of Columbus and admission date available in ODRS.

CDC 122-Cities Mortality Reporting System: Pneumonia and Influenza (P&I) Mortality

In week 1 of 2016, 5.4% of all Columbus and Franklin County deaths were attributed to pneumonia and influenza. Nationally in week 1, 6.4% of deaths reported were attributed to pneumonia and influenza. This national percentage was below the national epidemic threshold of 7.0% for week 1.

Influenza Morbidity and Influenza-Like Illness (ILI) Reports

In week 1, the preliminary local influenza and influenza-like-illness (ILI) visit rate to athenaHealth® providers (1.7 per 1,000 visits) decreased compared to the previous week and is below its baseline average for the week (Figure 1). The week 1 percentage of Emergency Department (ED) visits for ILI were stable compared to the previous week (Figure 3) and is slightly higher than the historic baseline for the week.

Nationally, during week 1 of 2016, 2.0% of patient visits reported through ILINet were due to influenza-like illness (ILI). The percentage is below the national baseline of 2.1% for week 1.

Laboratory Surveillance

During week 1 of 2016, reporting Franklin County sentinel medical facility laboratories tested 1,027 specimens, with 8 (0.8%) positive (Figure 4). The total number of tests done by local reporting labs from week 35 of 2014 through week 1 of 2016 is 14,670 with 114 (0.8%) positives (76 type A, 34 type B, 4 both A and B, 0 type unknown).

Nationally in week 1 of 2016, clinical laboratories reported 14,269 specimens tested for influenza viruses, 428 (3.0%) of which were positive (292 type A, 136 type B). Public health laboratories reported testing 929 specimens, 112 of which were positive (94 type A – of which 58 were A(H1N1)pdm09, 15 were A/H3, and 21 were not subtyped; 18 type B – of which 8 were Yamagata lineage, 4 were Victoria lineage, and 6 where lineage was not performed). Please visit the CDC website for more information, including cumulative data since week 40.

In week 1 of 2016, participating Ohio clinical labs reported 10,504 specimens tested for influenza this season thus far. Positive results include: (1) A(H1N1)pdm09; (2) A/H3N2; (17) Flu A Not Subtyped, and (13) Flu B (through 1/9/16). ODH Public Health Lab reported 88 specimens tested for influenza from various submitters this season thus far. Positive results include: (4) A(H1N1)pdm09; (1) A/H3N2; (1) Influenza B (through 1/9/16). Please visit the ODH website for more information.

ED Respiratory Visits

In the 1st week of 2016, the percentage of all ED visits categorized as *respiratory* was stable compared to the percentage seen the previous week and is slightly lower than its historic baseline for the week (Figure 5).

Over-the-Counter (OTC) Medication Sales

In week 1 of 2016, trends for the majority of local over-the-counter medication sales being tracked were mixed (decrease in cough and cold, thermometer, pediatric anti-fever and adult anti-fever sales; increase in electrolyte and chest rub sales; stable throat lozenge sales) compared to last week.

Additional Influenza Activity Web Links:

Ohio Seasonal Flu Surveillance: <http://www.odh.ohio.gov/features/odhfeatures/seasflu/ohfluactivity.aspx>

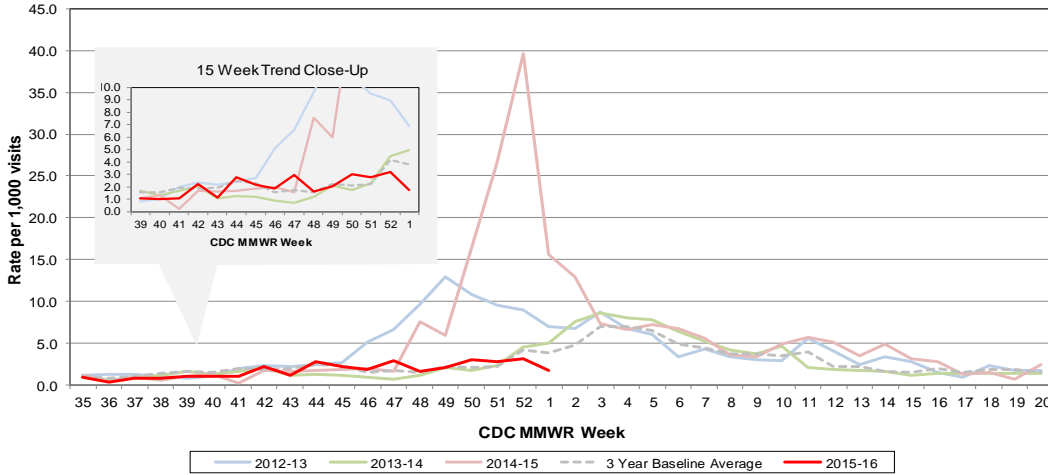
CDC National Seasonal Flu Surveillance Reports: <http://www.cdc.gov/flu/weekly/>

CDC International Flu Activity Map: <http://www.cdc.gov/flu/international/activity.htm>

World Health Organization Situation Updates: http://www.who.int/influenza/surveillance_monitoring/en/

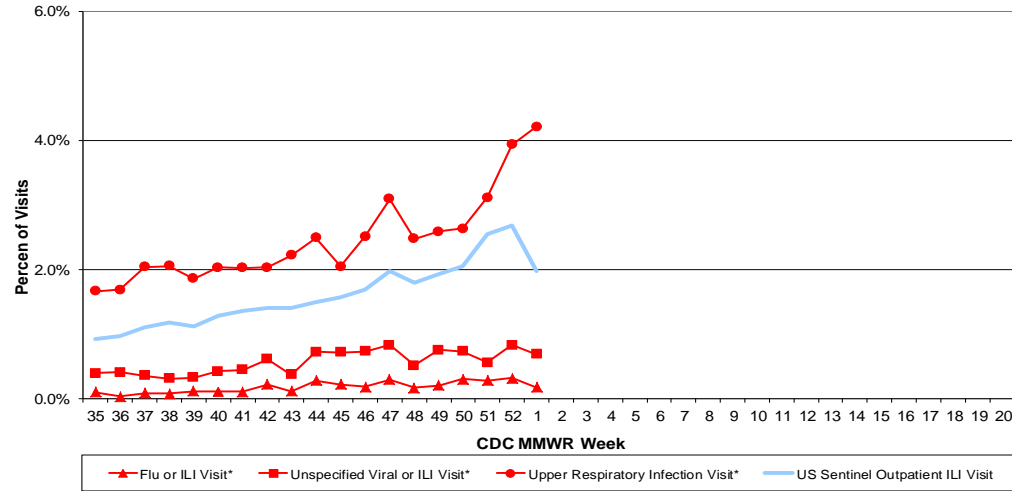
Columbus & Franklin County Influenza Monitoring Summary – Week 1, 2016 (1/3/2016-1/9/2016)

Figure 1: Local Participating Outpatient Primary Care Provider Influenza or Influenza-Like-Illness Visit Rate*, Franklin County, OH



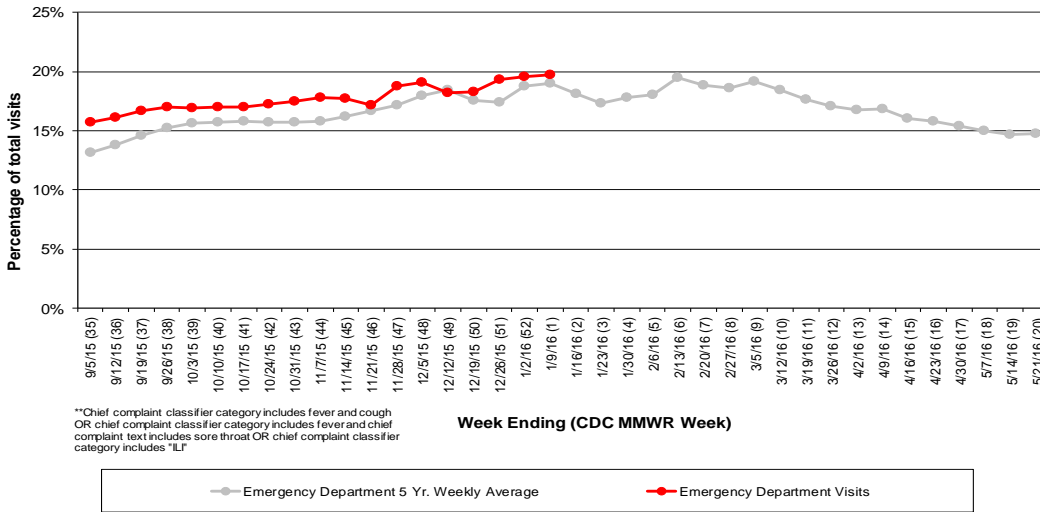
*Source: Medical Claims data from athenaHealth®
 Note: athenaHealth® claims data are subject to filing and processing time lags. Historical data are updated when they are received.

Figure 2: Percentage of Local Outpatient Participating Provider* and CDC National Outpatient Sentinel Health Care Provider Site visits for ILI and Associated Illnesses, 2015-16



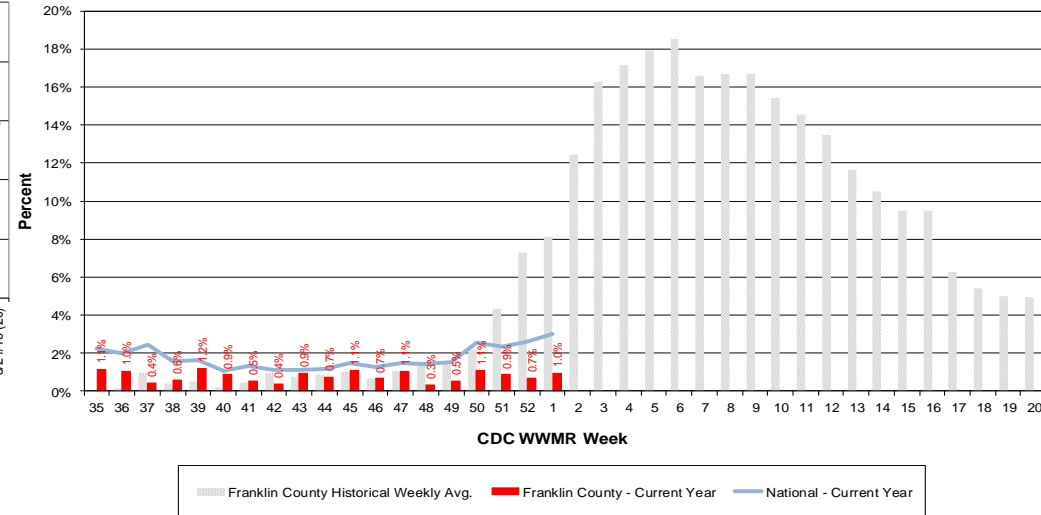
*Source: Local medical claims data provided by athenaHealth®
 Note: athenaHealth® claims data are subject to filing and processing time lags. Historical data are updated when they are received.

Figure 3: Franklin County Resident ILI Defined ED Visits, 2015-16, Franklin County, OH**



**Chief complaint classifier category includes fever and cough
 OR chief complaint classifier category includes fever and chief
 complaint text includes sore throat OR chief complaint classifier
 category includes *LF

Figure 4: Percentage of Local Reporting and National Laboratory Positive Influenza Tests by Week, 2015-16



Columbus & Franklin County Influenza Monitoring Summary – Week 1, 2016 (1/3/2016-1/9/2016)

Figure 5: Franklin County Resident Respiratory ED Visits, 2015-16, Franklin County, OH

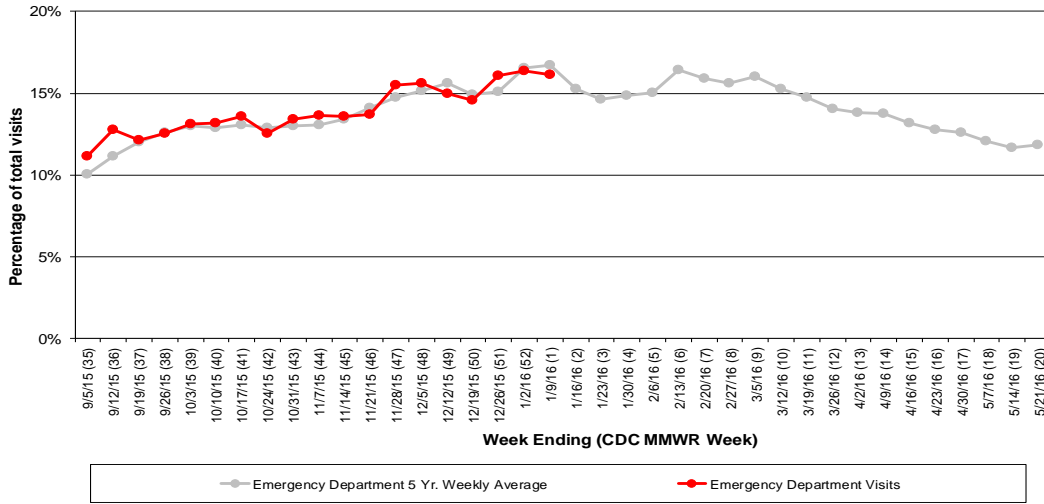


Figure 6: Selected Number of Over-the-Counter Medication Sales, 2015-16, Franklin County, OH

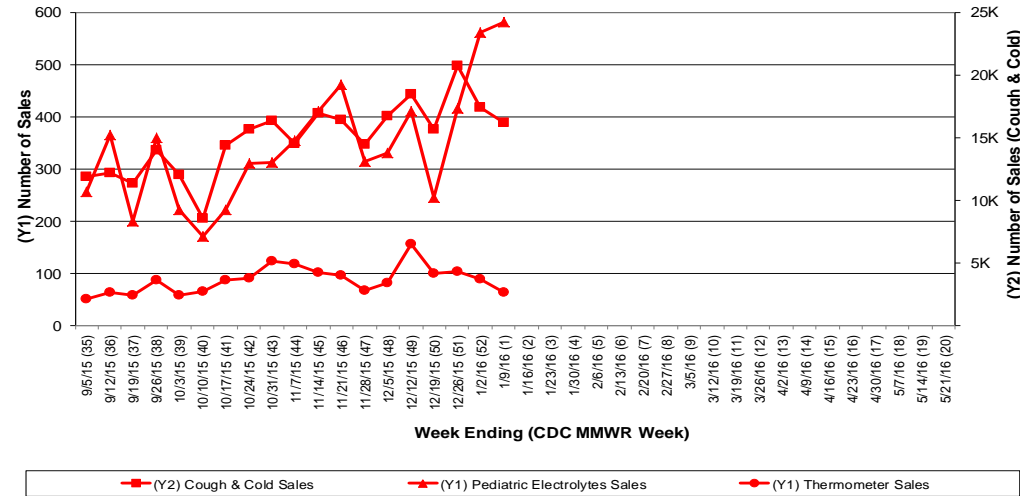
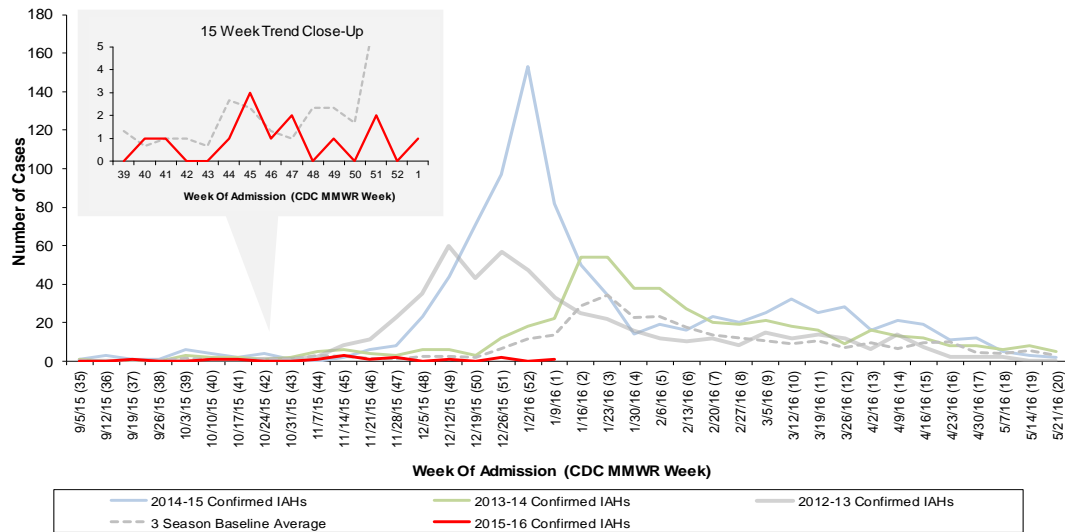


Figure 7: Franklin County Confirmed Influenza Associated Hospitalizations by Hospital Admission Week (As of 2:00 PM, 1/13/2016)



Franklin County, OH, Confirmed Influenza Hospitalization Cumulative Rates (per 100,000) by Age-Group and Admission Week, 2015-2016 Season

