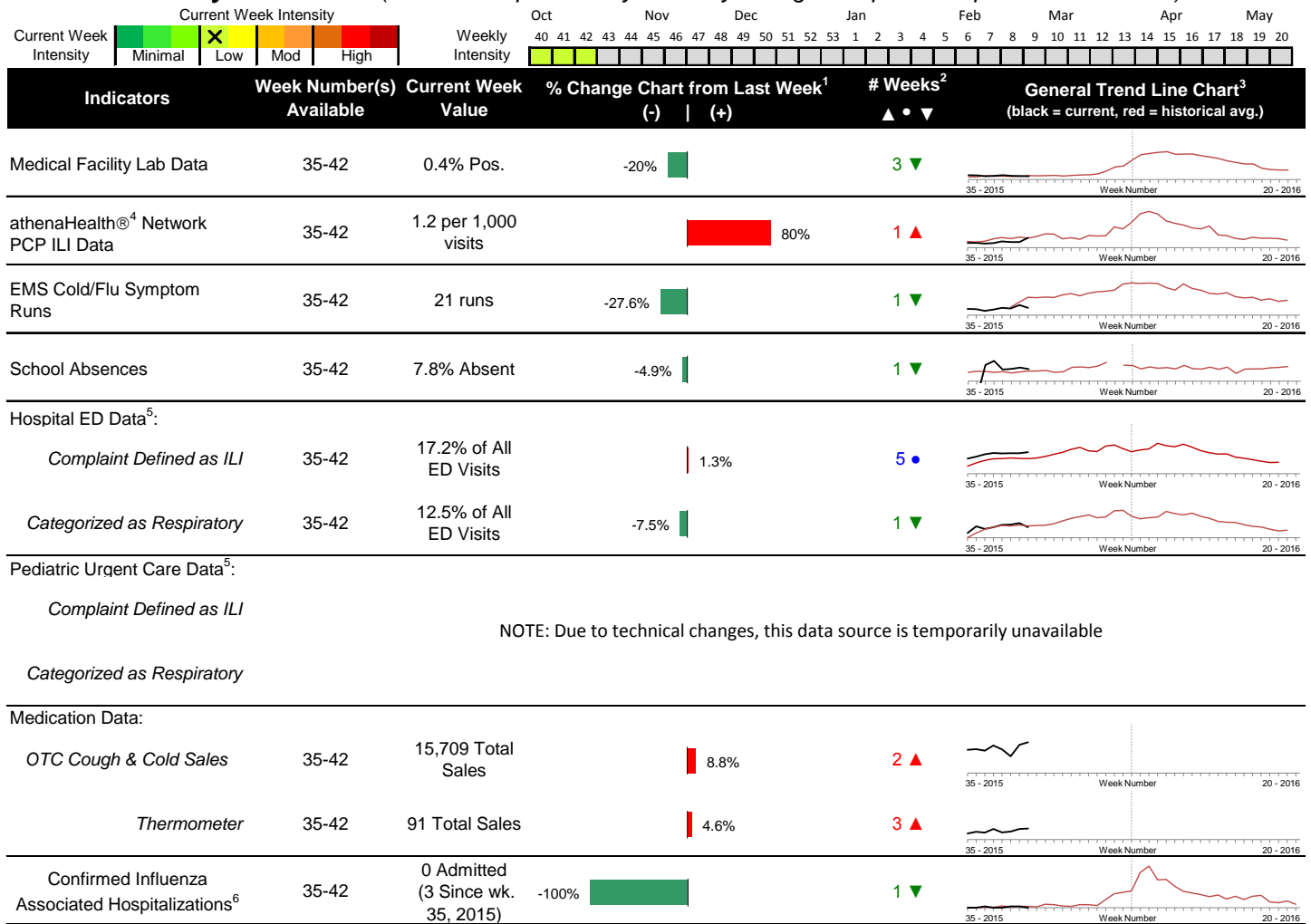


Highlights

- In week 42, local flu activity indicator trends were mixed and overall activity was low.
- Geographic activity and local intensity designation (Click [here](#) for definitions) = SPORADIC, LOW
- Local medical facility labs reported 692 tests run with 3 (0.4%) positive results for week 42 of 2015. This is slightly lower than last week's 0.5% and is slightly higher than the weekly baseline.
- The percentage of ED visits for influenza-like-illness (ILI) was stable, while respiratory symptoms visits decreased slightly compared to week 41. The percentage of ED visits for ILI is slightly above the baseline average while respiratory symptom visits are similar to its weekly baseline average.
- In week 42 of 2015, trends for the local over-the-counter medication sales tracked increased (increase in cough and cold, electrolyte, thermometer, chest rub, pediatric anti-fever, adult anti-fever and throat lozenge sales) compared to last week.
- Nationally in week 42, influenza activity was low. Please [visit the CDC website for specific information](#) (National data is usually updated on Friday of each week).

Local Flu Activity Dashboard *(All data are preliminary and may change as updated reports are received.)*



Reportable Conditions (Cumulative Numbers as of Oct 28, 2015, 9:00 AM)	2010	2011	2012	2013	2014	2015 YTD
Pediatric Influenza Associated Death Reported by Year (based on date of death)	0	0	0	0	0	0
Influenza Associated Hospitalizations (IAH) Reported by Admission Year ⁷	35	266	394	300	938	523
IAH comparison by Season (October - May or Weeks 35 - 20)	2010-11	2011-12	2012-13	2013-14	2014-15	2015-16
Current season (2015-16) is from week 35 through 42.	284	95	512	486	1,017	3

¹Interpret with caution. Indicators with small numbers subject to large weekly percentage fluctuations.

²Number of weeks "▲" = Increase (>2%), "▼" = Decrease (>2%), "•" = Stable (-2% to +2%).

³Black line is current years data. Based on data availability, red line is historical average (excluding pandemic year).

⁴Data Source: Medical claims data from athenaHealth® (www.athenahealth.com). Rate of ILI visits to Franklin County, OH athenaHealth® network primary care practices/physicians.

⁵Franklin County, OH residents only (based on zipcode). NOTE: Excludes one OH hospital system included in the past due to technical changes affecting visit classification assignment and numbers.

⁶Confirmed cases only. Based on jurisdiction equal to Franklin County or City of Columbus and admission date available in ODRS.

CDC 122-Cities Mortality Reporting System: Pneumonia and Influenza (P&I) Mortality

In week 42 of 2015, 5.8% of all Columbus and Franklin County deaths were attributed to pneumonia and influenza. Nationally, 5.8% of deaths reported were attributed to pneumonia and influenza in week 42. This national percentage is below the national epidemic threshold of 6.1% for week 42.

Influenza Morbidity and Influenza-Like Illness (ILI) Reports

In week 42, the preliminary local influenza-like-illness (ILI) visit rate to athenaHealth® providers (1.2 per 1,000 visits) increased compared to the previous week and is similar to the baseline average for the week (Figure 1). The week 42 percentage of Emergency Department (ED) visits for ILI symptoms was stable compared to the previous week (Figure 3) and is slightly higher than the historic baseline for the week.

Nationally, during week 42 of 2015, 1.3% of patient visits reported through the US Outpatient Influenza-like Illness Surveillance Network (ILINet), were due to influenza-like illness (ILI). The percentage is below the national baseline of 2.1%.

Laboratory Surveillance

During week 42 of 2015, reporting Franklin County sentinel medical facility laboratories tested 692 specimens, with 3 (0.4%) positive (Figure 4). The total number of tests done by local reporting labs from week 35 of 2014 through week 42 of 2015 is 4,532 with 34 (0.8%) positives (22 type A, 12 type B, 0 both A and B, 0 type unknown).

Nationally in week 42 of 2015, clinical laboratories reported 10,315 specimens tested for influenza viruses, 124 (1.2%) of which were positive (89 type A, 35 type B). Public health laboratories reported testing 638 specimens, 34 of which were positive (33 type A – of which 2 were A(H1N1)pdm09, 24 were A/H3N2, and 7 were not subtyped; 1 type B – lineage not performed). Please visit the CDC website for more information.

At the time of this report, no updated Ohio lab information was available. As of the last report, participating Ohio clinical labs reported 756 specimens tested for influenza virus this season, 2 (0.3%) of which were positive (1) A(H1N1)pdm09; (1) A/H3N2; (0) Flu A Not Subtyped, and (0) Flu B (through 10/17/15). ODH Public Health Lab results for Ohio cases that are PCR positive for influenza during the 2015-16 season included: (1) A(H1N1)pdm09; (0) A/H3N2; (0) Influenza B (through 10/17/15).

ED Respiratory Visits

In the 42nd week of 2015, the percentage of all ED visits categorized as *respiratory* decreased compared to the percentage seen the previous week and is similar to its historic baseline for the week (Figure 5).

Over-the-Counter (OTC) Medication Sales

In week 42 of 2015, trends for the local over-the-counter medication sales tracked increased (increase in cough and cold, electrolyte, thermometer, chest rub, pediatric anti-fever, adult anti-fever and throat lozenge sales) compared to last week.

Additional Influenza Activity Web Links:

Ohio Seasonal Flu Surveillance: <http://www.odh.ohio.gov/features/odhfeatures/seasflu/ohfluactivity.aspx>

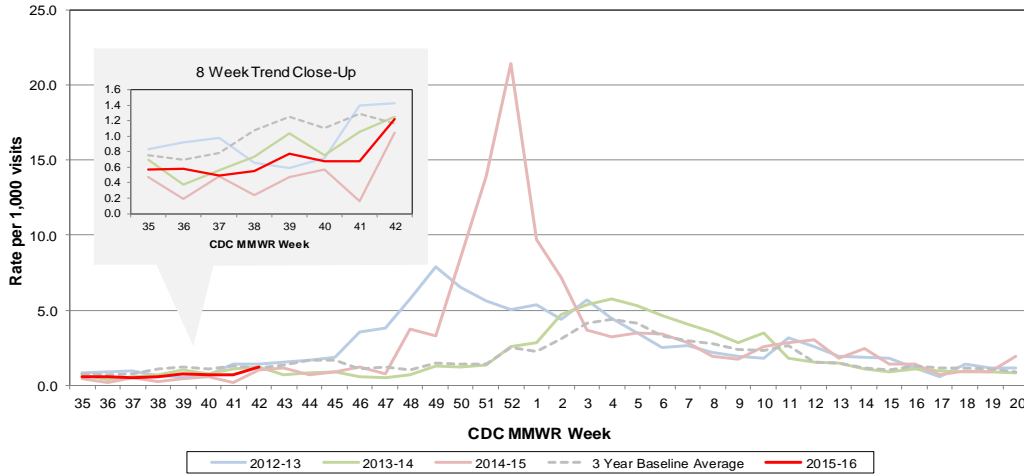
CDC National Seasonal Flu Surveillance Reports: <http://www.cdc.gov/flu/weekly/>

CDC International Flu Activity Map: <http://www.cdc.gov/flu/international/activity.htm>

World Health Organization Situation Updates: http://www.who.int/influenza/surveillance_monitoring/en/

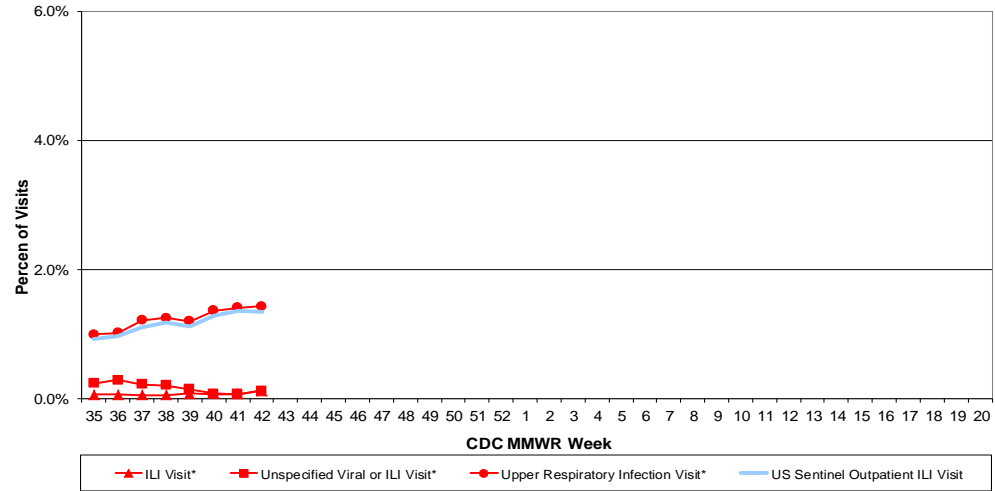
Columbus & Franklin County Influenza Monitoring Summary – Week 42, 2015 (10/18/2015-10/24/2015)

Figure 1: Local Participating Outpatient Primary Care Provider Influenza-Like-Illness Visit Rate*, Franklin County, OH



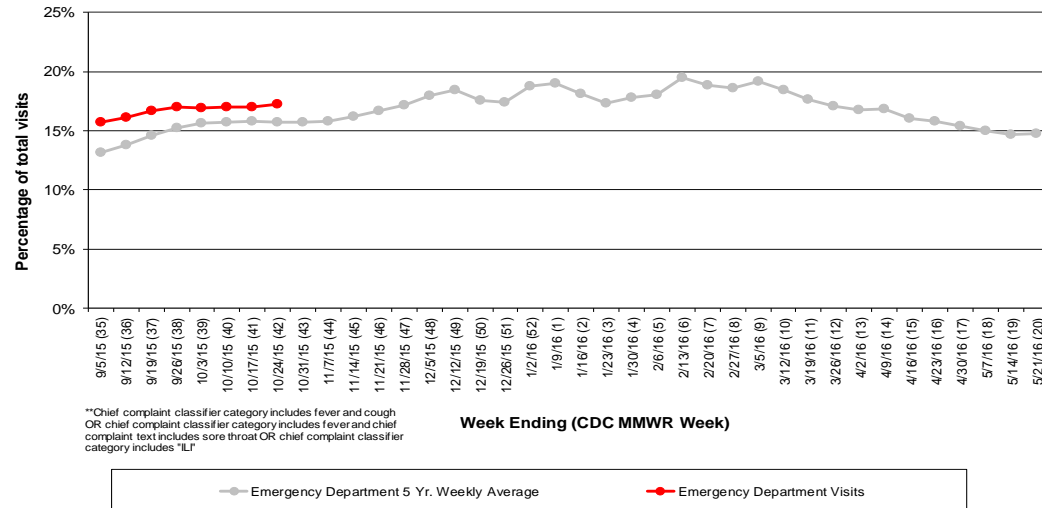
*Source: Medical Claims data from athenaHealth®
 Note: athenaHealth® claims data are subject to filing and processing time lags. Historical data are updated when they are received.

Figure 2: Percentage of Local Outpatient Participating Provider* and CDC National Outpatient Sentinel Health Care Provider Site visits for ILI and Associated Illnesses, 2015-16



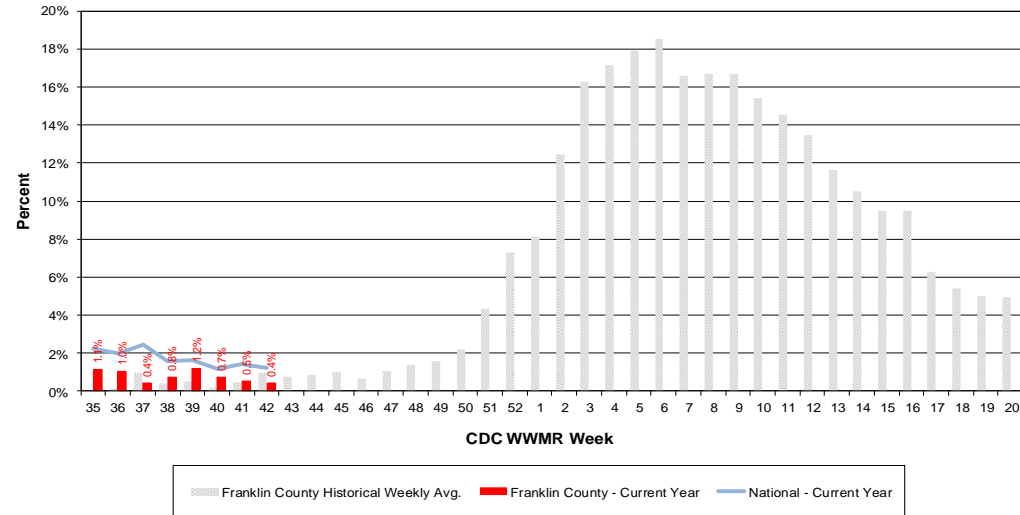
*Source: Local medical claims data provided by athenaHealth®
 Note: athenaHealth® claims data are subject to filing and processing time lags. Historical data are updated when they are received.

Figure 3: Franklin County Resident ILI Defined ED Visits, 2015-16, Franklin County, OH**



**Chief complaint classifier category includes fever and cough
 OR chief complaint classifier category includes fever and chief
 complaint text includes sore throat OR chief complaint classifier
 category includes "ILI"

Figure 4: Percentage of Local Reporting and National Laboratory Positive Influenza Tests by Week, 2015-16



Columbus & Franklin County Influenza Monitoring Summary – Week 42, 2015 (10/18/2015-10/24/2015)

Figure 5: Franklin County Resident Respiratory ED Visits, 2015-16, Franklin County, OH

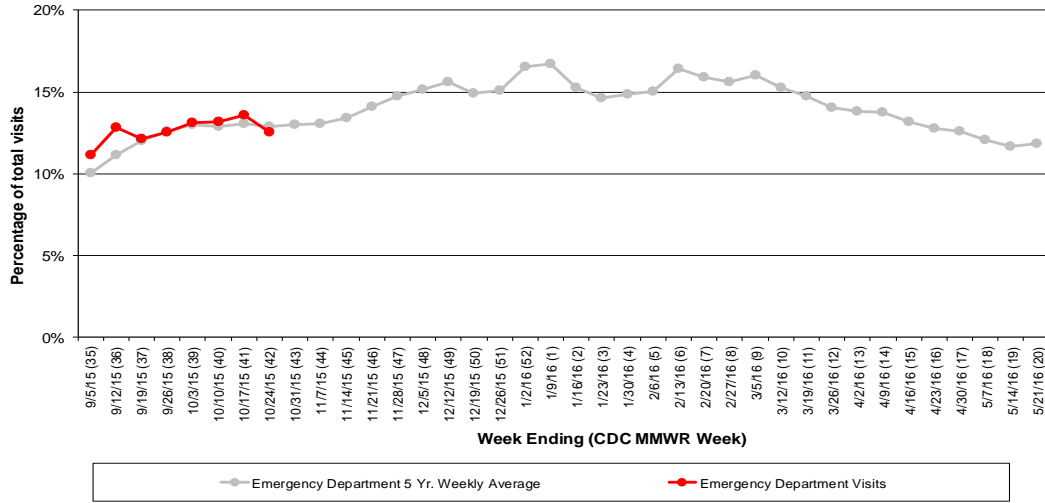


Figure 6: Selected Number of Over-the-Counter Medication Sales, 2015-16, Franklin County, OH

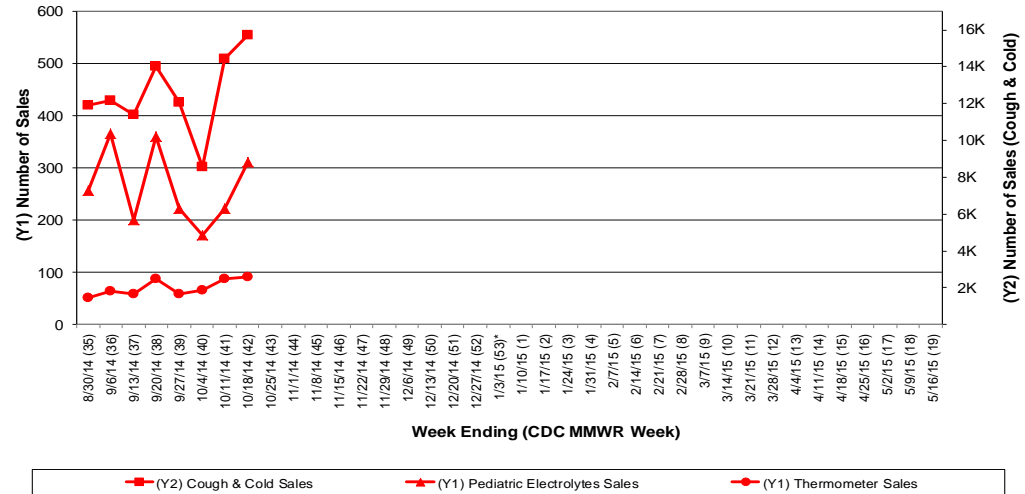
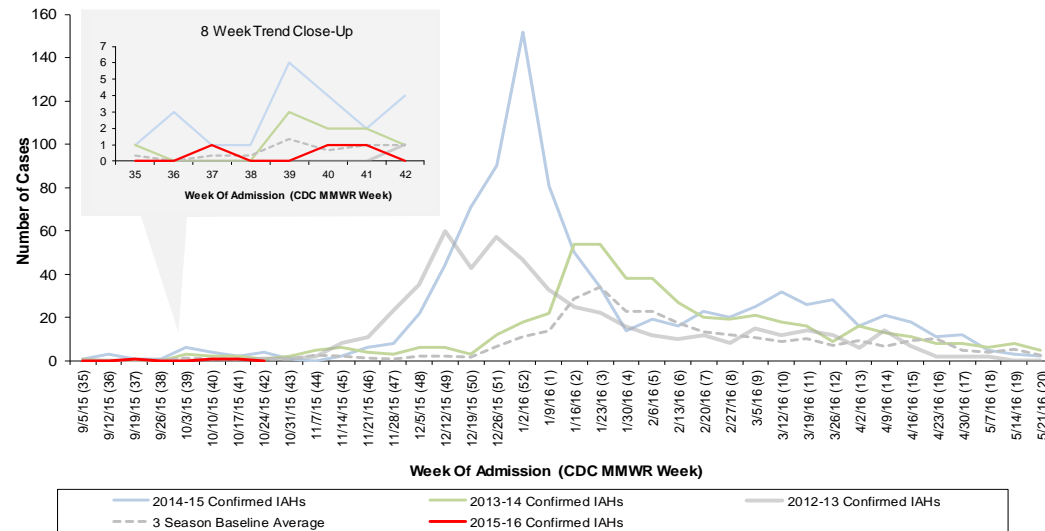


Figure 7: Franklin County Confirmed Influenza Associated Hospitalizations by Hospital Admission Week (As of 9:00 AM, 10/28/2015)



Franklin County, OH, Confirmed Influenza Hospitalization Cumulative Rates (per 100,000) by Age-Group and Admission Week, 2015-2016 Season

