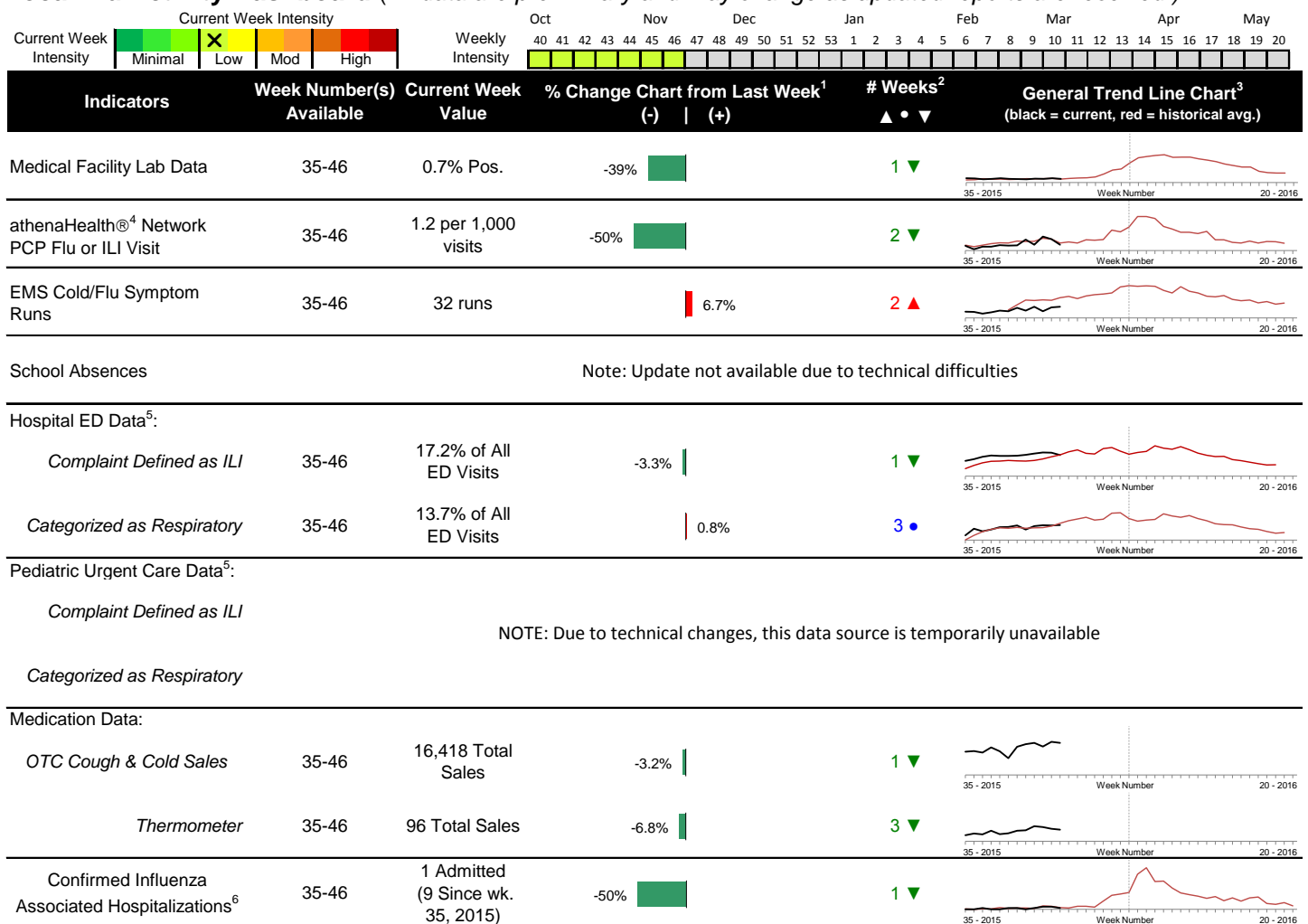


### Highlights

- In week 46, individual local flu activity indicator trends generally decreased. Overall, local flu intensity continues to be low and decreased compared to the previous week.
- Geographic spread and local intensity designation (Click [here](#) for definitions) = SPORADIC, LOW
- Local medical facility labs reported 851 tests run with 6 (0.71%) positive results for week 46 of 2015. This is lower than last week's 1.2% and is similar to the weekly baseline.
- The percentage of ED visits for influenza-like-illness (ILI) was slightly lower, while respiratory symptom visits were stable compared to week 45. The percentage of ED visits for both ILI and respiratory symptoms were similar to the baseline average.
- In week 46 of 2015, trends for the local over-the-counter medication sales were mixed (decrease in cough and cold, thermometer, and throat lozenge sales; increase in electrolyte, adult anti-fever, and pediatric anti-fever sales; stable chest rub sales) compared to last week.
- NOTE: Updated week 46 National data was not available at the time of this report. Nationally in week 45, influenza activity increased slightly. Please [visit the CDC website for specific information](#) (National data is usually updated on Friday of each week).

### Local Flu Activity Dashboard (All data are preliminary and may change as updated reports are received.)



Reportable Conditions (Cumulative Numbers as of Nov 24, 2015, 2:30 PM)	2010	2011	2012	2013	2014	2015 YTD
Pediatric Influenza Associated Death Reported by Year (based on date of death)	0	0	0	0	0	0
Influenza Associated Hospitalizations (IAH) Reported by Admission Year <sup>6</sup>	35	266	394	300	938	530
IAH comparison by Season (October - May or Weeks 35 - 20)	2010-11	2011-12	2012-13	2013-14	2014-15	2015-16
Current season (2015-16) is from week 35 through 46.	284	95	512	486	1,017	9

<sup>1</sup>Interpret with caution. Indicators with small numbers subject to large weekly percentage fluctuations.

<sup>2</sup>Number of weeks "▲" = Increase (>2%), "▼" = Decrease (>2%), "•" = Stable (-2% to +2%).

<sup>3</sup>Black line is current years data. Based on data availability, red line is historical average (excluding pandemic year).

<sup>4</sup>Data Source: Medical claims data from athenaHealth<sup>®</sup> (www.athenahealth.com). Rate of Flu or ILI visits to Franklin County, OH athenaHealth<sup>®</sup> network primary care practices/physicians.

<sup>5</sup>Franklin County, OH residents only (based on zipcode). NOTE: Excludes one hospital system included in the past due to technical changes affecting visit classification assignment and numbers.

<sup>6</sup>Confirmed cases only. Based on jurisdiction equal to Franklin County or City of Columbus and admission date available in ODRS.

### **CDC 122-Cities Mortality Reporting System: Pneumonia and Influenza (P&I) Mortality**

In week 46 of 2015, 5.9% of all Columbus and Franklin County deaths were attributed to pneumonia and influenza. NOTE: Updated week 46 National P&I data was not available at the time of this report. Nationally in week 45, 5.3% of deaths reported were attributed to pneumonia and influenza. This national percentage was below the national epidemic threshold of 6.3% for week 45.

### **Influenza Morbidity and Influenza-Like Illness (ILI) Reports**

In week 46, the preliminary local influenza and influenza-like-illness (ILI) visit rate to athenaHealth® providers (1.2 per 1,000 visits) decreased compared to the previous week and is slightly lower than the baseline average for the week (Figure 1). The week 46 percentage of Emergency Department (ED) visits for ILI symptoms was slightly lower compared to the previous week (Figure 3) and is similar to the historic baseline for the week.

NOTE: Updated week 46 US Outpatient ILI Surveillance Network data was not available at the time of this report. Nationally, during week 45 of 2015, 1.6% of patient visits reported through the US Outpatient Influenza-like Illness Surveillance Network (ILINet), were due to influenza-like illness (ILI). The percentage is below the national baseline of 2.1% for week 45.

### **Laboratory Surveillance**

During week 46 of 2015, reporting Franklin County sentinel medical facility laboratories tested 851 specimens, with 6 (0.71%) positive (Figure 4). The total number of tests done by local reporting labs from week 35 of 2014 through week 46 of 2015 is 7,876 with 63 (0.8%) positives (42 type A, 19 type B, 2 both A and B, 0 type unknown).

NOTE: Updated week 46 National flu lab data was not available at the time of this report. Nationally in week 45 of 2015, clinical laboratories reported 11,899 specimens tested for influenza viruses, 194 (1.6%) of which were positive (111 type A, 83 type B). Public health laboratories reported testing 648 specimens, 25 of which were positive (18 type A – of which 6 were A(H1N1)pdm09, 10 were A/H3, and 2 were not subtyped; 7 type B – of which 2 were Victoria lineage, 1 was Yamagata lineage, and 4 lineage not performed). Please visit the CDC website for more information.

Participating Ohio clinical labs reported 4,765 specimens tested for influenza this season thus far. Positive results include: (1) A(H1N1)pdm09; (1) A/H3N2; (9) Flu A Not Subtyped, and (5) Flu B (through 11/21/15). ODH Public Health Lab reported 57 specimens tested for influenza from various submitters this season thus far. Positive results include: (2) A(H1N1)pdm09; (0) A/H3N2; (1) Influenza B (through 11/21/15). Please visit the ODH website for more information.

### **ED Respiratory Visits**

In the 46<sup>th</sup> week of 2015, the percentage of all ED visits categorized as *respiratory* was stable compared to the percentage seen the previous week and is similar to its historic baseline for the week (Figure 5).

### **Over-the-Counter (OTC) Medication Sales**

In week 46 of 2015, trends for the local over-the-counter medication sales tracked were mixed (decrease in cough and cold, thermometer, and throat lozenge sales; increase in electrolyte, adult anti-fever, and pediatric anti-fever sales; stable chest rub sales) compared to last week.

### **Additional Influenza Activity Web Links:**

Ohio Seasonal Flu Surveillance: <http://www.odh.ohio.gov/features/odhfeatures/seasflu/ohfluactivity.aspx>

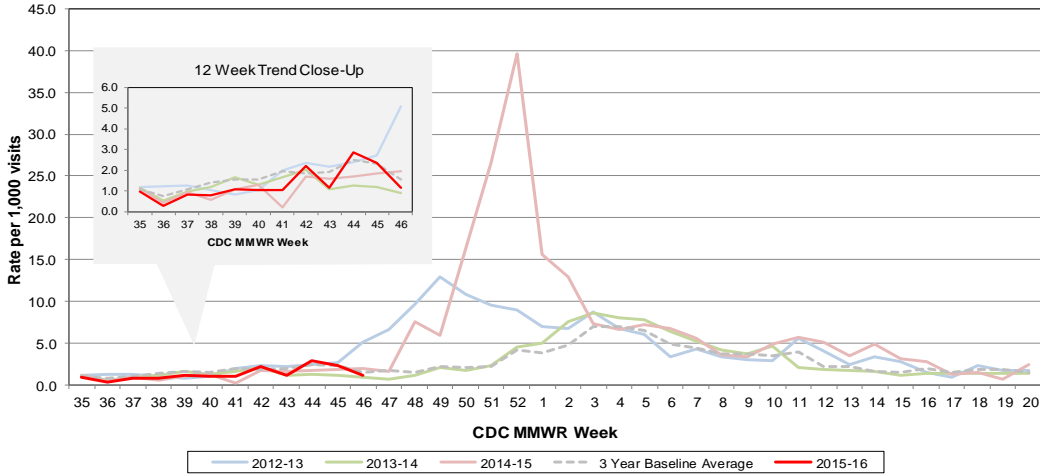
CDC National Seasonal Flu Surveillance Reports: <http://www.cdc.gov/flu/weekly/>

CDC International Flu Activity Map: <http://www.cdc.gov/flu/international/activity.htm>

World Health Organization Situation Updates: [http://www.who.int/influenza/surveillance\\_monitoring/en/](http://www.who.int/influenza/surveillance_monitoring/en/)

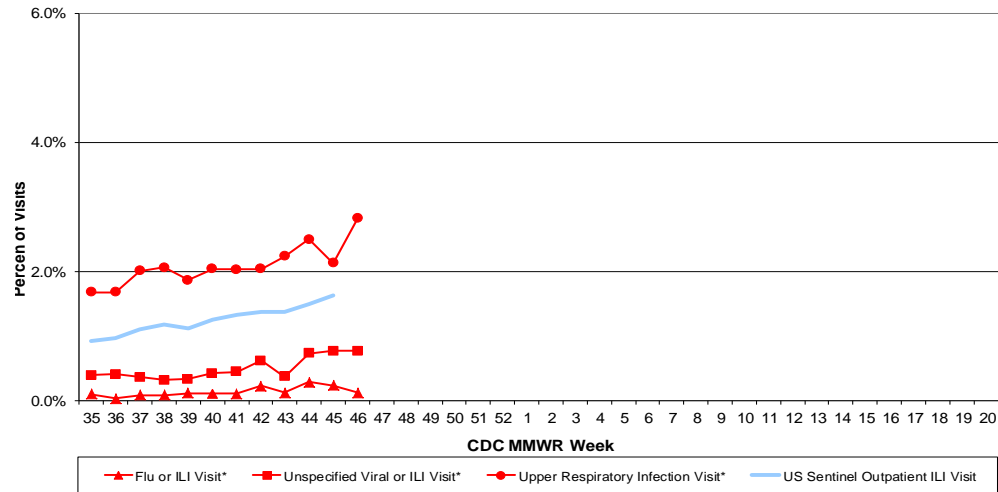
Columbus & Franklin County Influenza Monitoring Summary – Week 46, 2015 (11/15/2015-11/21/2015)

**Figure 1: Local Participating Outpatient Primary Care Provider Influenza or Influenza-Like Illness Visit Rate\*, Franklin County, OH**



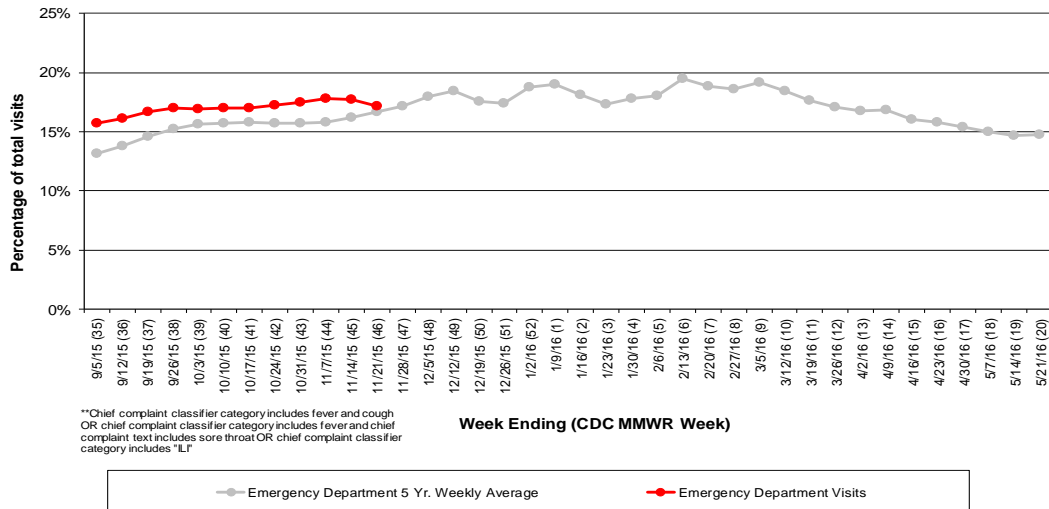
\*Source: Medical Claims data from athenaHealth®  
 Note: athenaHealth® claims data are subject to filing and processing time lags. Historical data are updated when they are received.

**Figure 2: Percentage of Local Outpatient Participating Provider\* and CDC National Outpatient Sentinel Health Care Provider Site visits for ILI and Associated Illnesses, 2015-16**



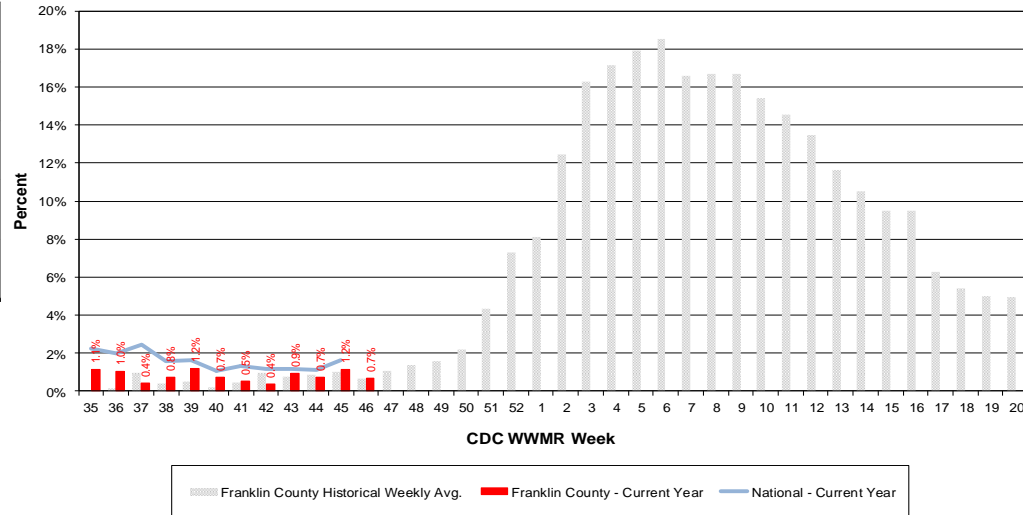
\*Source: Local medical claims data provided by athenaHealth®  
 Note: athenaHealth® claims data are subject to filing and processing time lags. Historical data are updated when they are received.

**Figure 3: Franklin County Resident ILI Defined\*\* ED Visits, 2015-16, Franklin County, OH**



\*\*Chief complaint classifier category includes fever and cough  
 OR chief complaint classifier category includes fever and chief complaint text includes sore throat OR chief complaint classifier category includes "ILI"

**Figure 4: Percentage of Local Reporting and National Laboratory Positive Influenza Tests by Week, 2015-16**



Columbus & Franklin County Influenza Monitoring Summary – Week 46, 2015 (11/15/2015-11/21/2015)

Figure 5: Franklin County Resident Respiratory ED Visits, 2015-16, Franklin County, OH

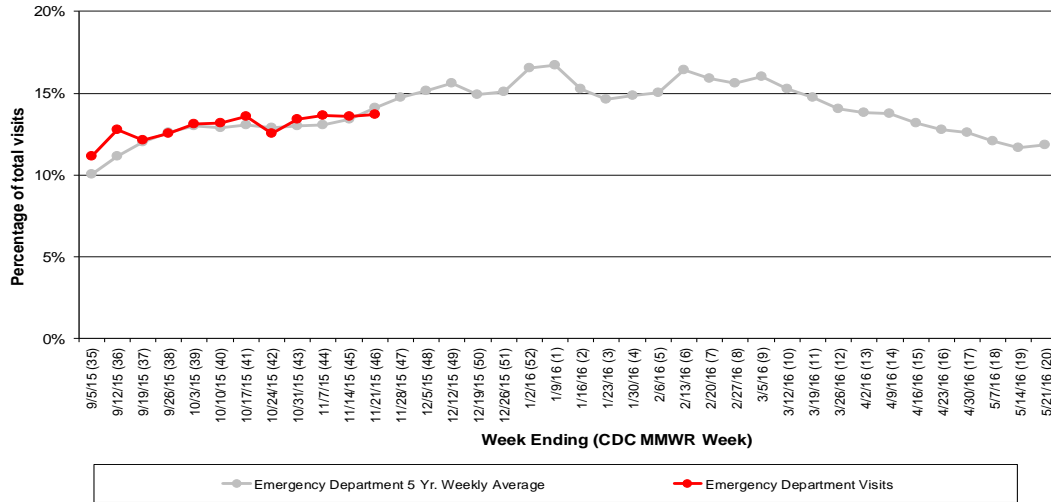


Figure 6: Selected Number of Over-the-Counter Medication Sales, 2015-16, Franklin County, OH

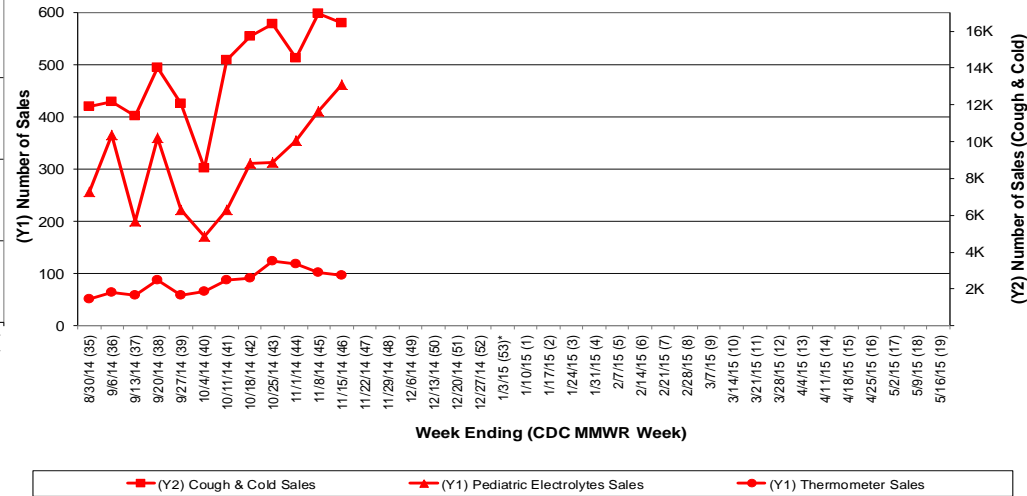
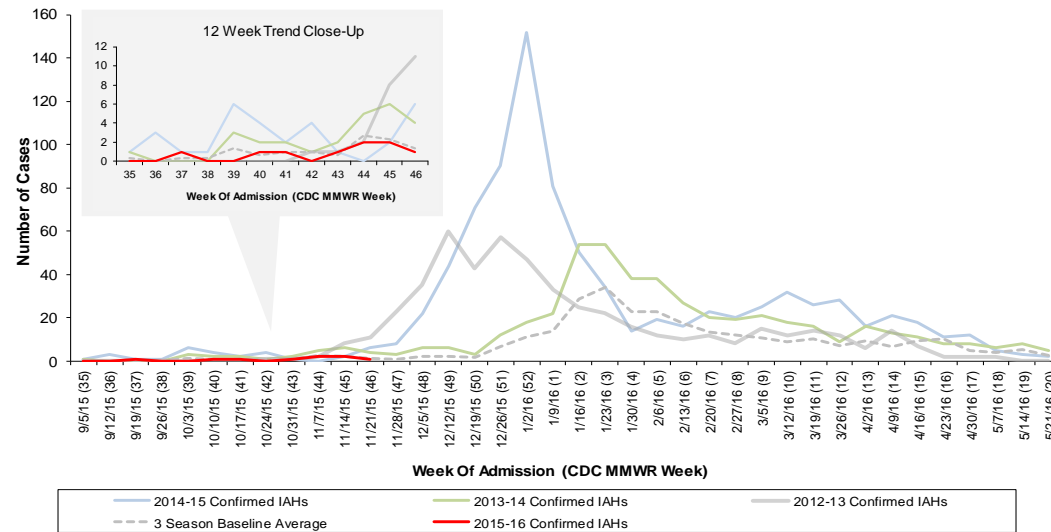


Figure 7: Franklin County Confirmed Influenza Associated Hospitalizations by Hospital Admission Week (As of 2:30 PM, 11/24/2015)



Franklin County, OH, Confirmed Influenza Hospitalization Cumulative Rates (per 100,000) by Age-Group and Admission Week, 2015-2016 Season

