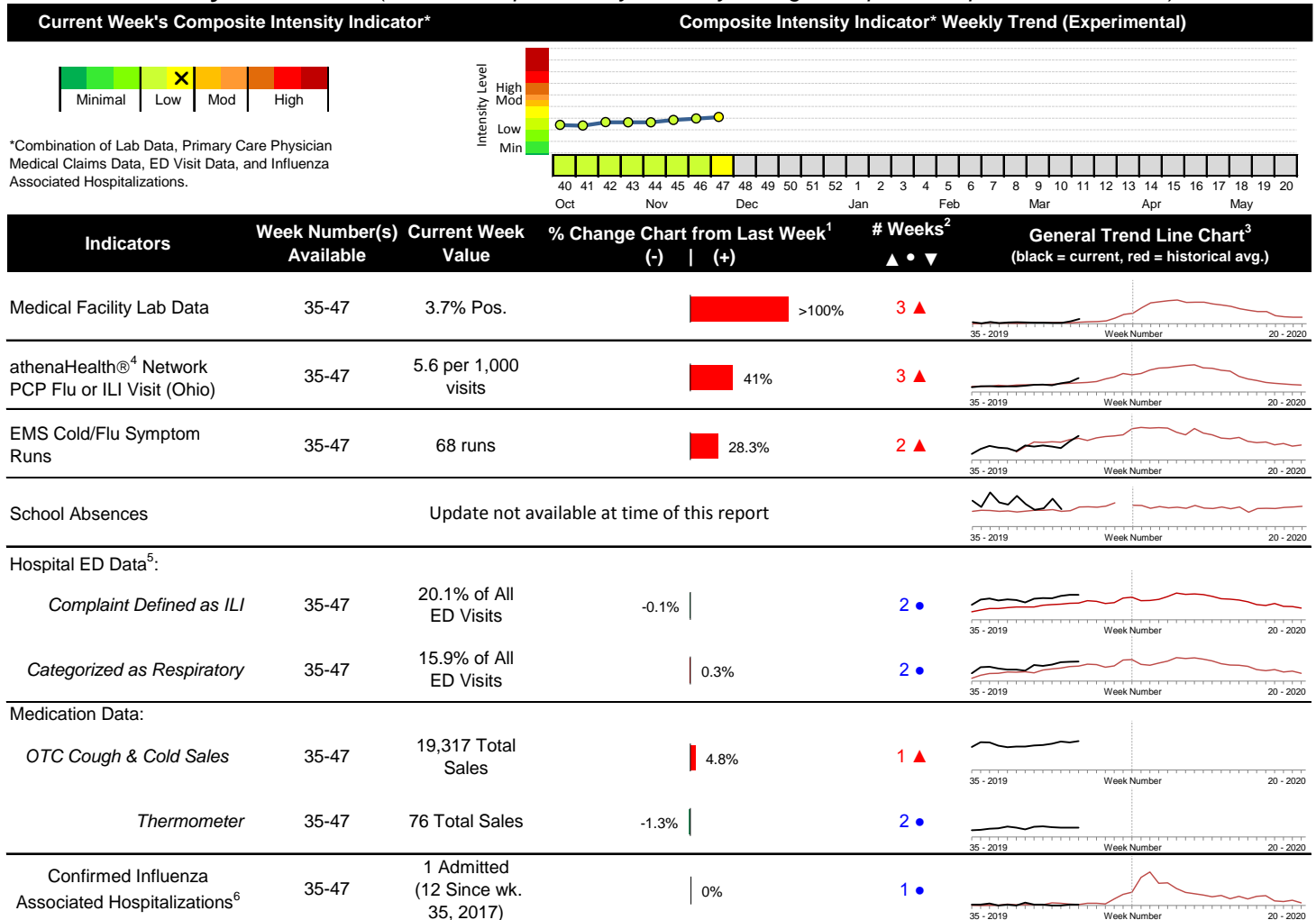


2019-2020 Columbus & Franklin County Seasonal Influenza Activity Weekly Summary (Week 47, Nov 17th, 2019– Nov 23rd, 2019)

Highlights

- In week 47 of 2019, the individual local flu activity indicator trend values either increased or remained stable compared to the previous week. Notable increases in influenza lab positives, statewide primary care visits for ILI, and EMS runs were seen. As a whole, flu intensity (composite indicator) continued to increase and is low.
- Geographic spread and local intensity designation (Click [here](#) for definitions) = LOCALIZED, LOW
- Local medical facility labs reported 1,195 tests run with 44 (3.7%) positive results for week 47 of 2019.
- The percentage of ED visits for both influenza-like-illness (ILI) and respiratory symptom visits were stable compared to last week.
- In week 47 of 2019, the majority of individual local over-the-counter medication category sale trends tracked increased (decrease in thermometer sales; increase in cough and cold, electrolyte, chest rub, pediatric anti-fever, adult anti-fever, and throat lozenge sales) compared to last week.
- Updated national data was unavailable at the time of this report. In week 46, the U.S. seasonal influenza activity continued to increase. Please [visit the CDC website for specific information](#).

Local Flu Activity Dashboard *(All data are preliminary and may change as updated reports are received.)*



Reportable Conditions (Cumulative Numbers as of Nov 24, 2019)	2014	2015	2016	2017	2018	2019 YTD
Pediatric Influenza Associated Death Reported by Year (based on date of death)	0	0	0	0	0	1
Influenza Associated Hospitalizations (IAH) Reported by Admission Year ⁶	875	447	293	846	1,036	716
<i>IAH comparison by Flu Season (October through May or Weeks 35 - 20)</i>	<u>2014-15</u>	<u>2015-16</u>	<u>2016-17</u>	<u>2017-18</u>	<u>2018-19</u>	<u>2019-20*</u>
<i>*Current season figures (2019-20) are from week 35 through week 47 of 2019.</i>	871	265	619	1,235	746	12

¹Interpret with caution. Indicators with small numbers subject to large weekly percentage fluctuations.

²Number of weeks "▲" = Increase (>2%), "▼" = Decrease (>2%), "●" = Stable (-2% to +2%).

³Black line is current years data. Based on data availability, red line is historical average (excluding pandemic year).

⁴Data Source: Medical claims data from athenaHealth[®] (www.athenahealth.com). Rate of Flu or ILI visits to Ohio (statewide) athenaHealth[®] network primary care practices/physicians. Claims data are subject to filing and processing time lags. Historical data are updated when they are received.

⁵Franklin County, OH residents only (based on zipcode). NOTE: Excludes one hospital system included in the past due to technical changes affecting visit classification assignment and numbers.

⁶Confirmed cases only. Based on jurisdiction equal to Franklin County or City of Columbus and admission date available in ODRS.

Influenza Morbidity and Influenza-Like Illness (ILI) Reports

In week 47, the preliminary Ohio¹ (statewide) influenza and influenza-like-illness (ILI) visit rate to athenaHealth® primary care providers (5.6 per 1,000 visits) increased compared to the previous week and is above its baseline average for the week (Figure 1). The week 47 percentage of all Emergency Department (ED) visits categorized as ILI was stable compared to the previous week (Figure 3) and is above its historic baseline for the week.

Updated national data was unavailable at the time of this report. Nationally, during week 46 of 2019, 2.5% of patient visits reported through ILINet were due to influenza-like illness (ILI). The percentage is above the national baseline of 2.4% for week 46.

Laboratory Surveillance

During week 47 of 2019, reporting Franklin County sentinel medical facility laboratories tested 1,195 specimens, with 44 (3.7%) positive (Figure 4). The total number of tests done by local reporting labs from week 35 of 2019 through week 47 of 2019 is 10,667 with 132 (1.2%) positives (37 type A, 95 type B, 0 type A and B, 0 type unknown).

Updated national data was unavailable at the time of this report. Nationally in week 46 of 2019, clinical laboratories reported 24,405 specimens tested for influenza viruses, 1,786 (7.3%) of which were positive (470 type A, 1,316 type B). In week 46, public health laboratories reported testing 779 specimens, 241 of which were positive (87 type A – of which 54 were A(H1N1)pdm09, 22 were H3N2, and 11 were not subtyped; 154 type B – of which 3 were Yamagata lineage, 106 were Victoria lineage, and 45 where lineage was not performed). Please visit the CDC website for more information, including cumulative data.

In week 47 of 2019, Ohio clinical labs reported 12,009 specimens tested for influenza this season thus far. Positive results include: (6) A(H1N1)pdm09; (2) A/H3N2; (50) Flu A Not Subtyped, and (38) Flu B (through 11/23/2019). In week 47 of 2019, ODH Public Health Lab reported 12 positive influenza tests from various submitters this season so far. Positive results include: (1) A(H1N1)pdm09; (7) A/H3N2; (4) Influenza B (through 11/23/2019). Please visit the ODH website for more information.

ED Respiratory Visits

In the 47th week of 2019, the percentage of all ED visits categorized as respiratory was stable compared to the percentage seen the previous week and is above its baseline for the week (Figure 5).

Over-the-Counter (OTC) Medication Sales

In week 47 of 2019, the majority of individual local over-the-counter medication category sale trends tracked increased (decrease in thermometer sales; increase in cough and cold, electrolyte, chest rub, pediatric anti-fever, adult anti-fever, and throat lozenge sales) compared to last week.

Additional Influenza Activity Web Links:

Ohio Seasonal Flu Surveillance: <https://odh.ohio.gov>

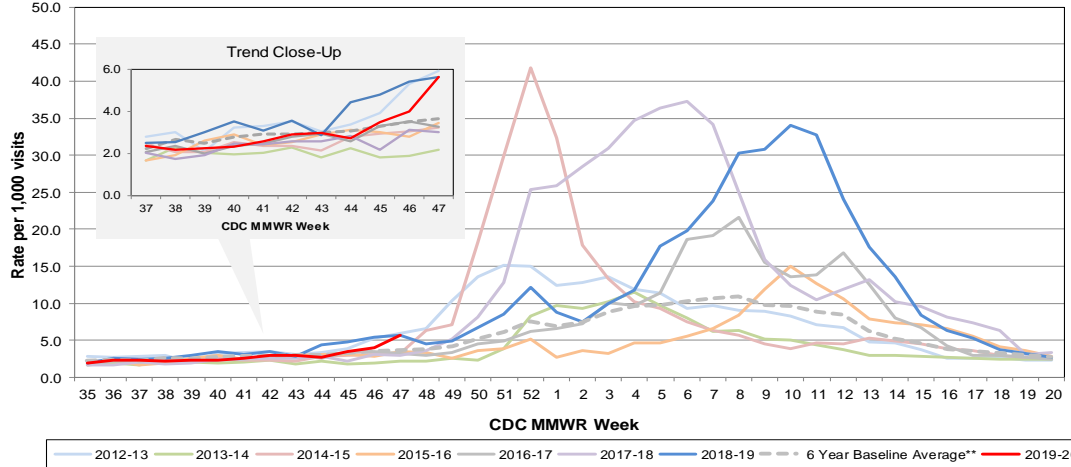
CDC National Seasonal Flu Surveillance Reports: <http://www.cdc.gov/flu/weekly/>

World Health Organization Situation Updates: http://www.who.int/influenza/surveillance_monitoring/en/

¹Note: County level athenaHealth® network primary care medical claims data is no longer available.

Columbus & Franklin County Influenza Monitoring Summary – Week 47, 2019 (11/17/2019-11/23/2019)

Figure 1: Ohio Outpatient Primary Care Provider Influenza or Influenza-Like-Illness Visit Rate*

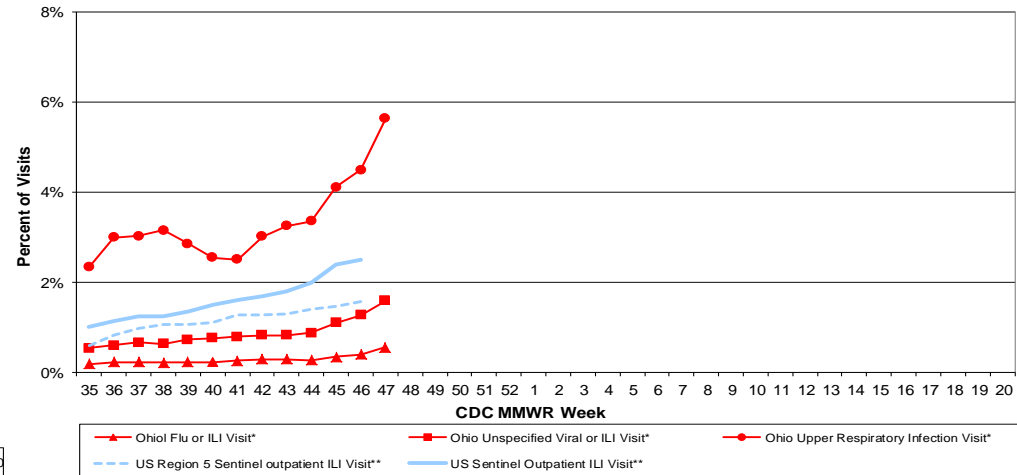


*Source: Ohio (Statewide) medical claims data from athenaHealth®

**Seasons: 2010-11, 2011-12, 2012-13, 2013-14, 2015-16, 2016-17

Note: athenaHealth® claims data are subject to filing and processing time lags. Historical data are updated when they are received.

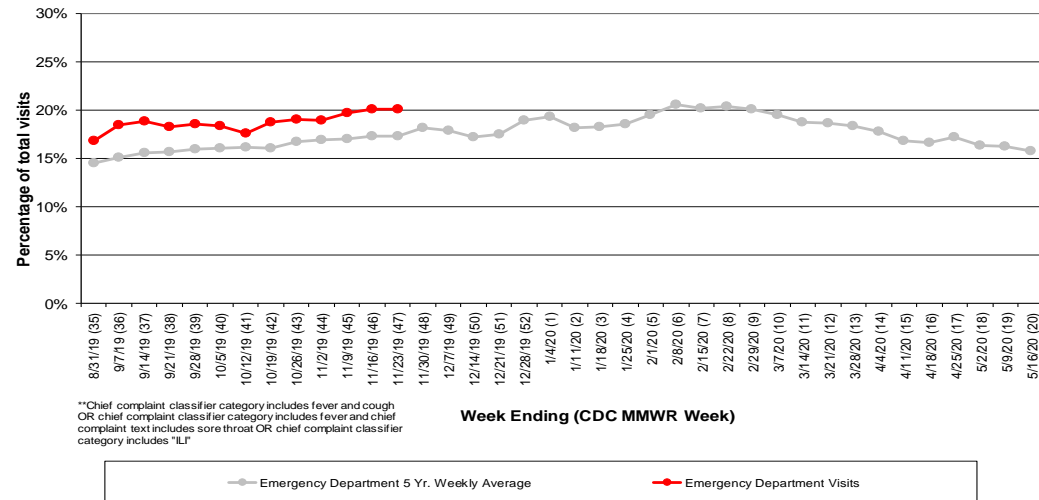
Figure 2: Percentage of Ohio Outpatient Participating Provider* and CDC National Outpatient Sentinel Health Care Provider visits for ILI and Associated Illnesses, 2019-20**



*Source: Ohio (statewide) medical claims data provided by athenaHealth®. Data are subject to filing and processing time lags. Historical data are updated when received.

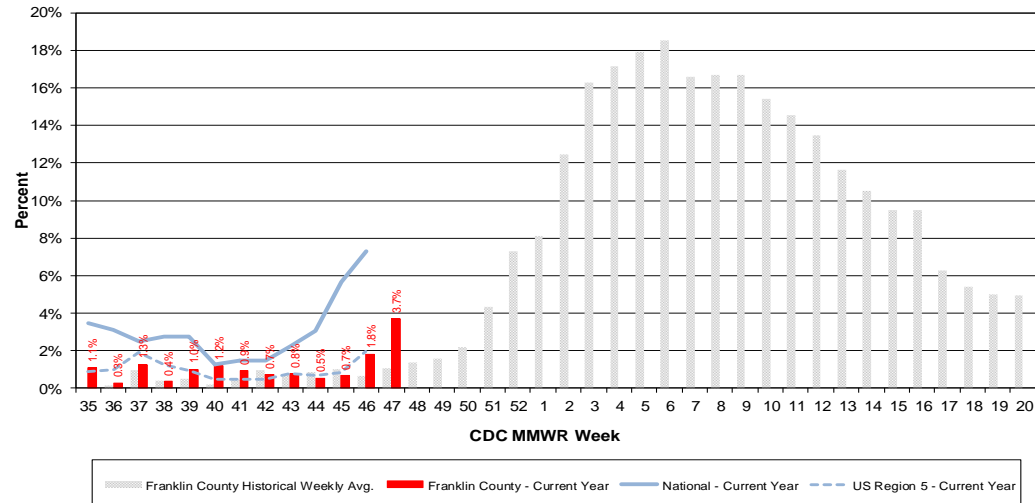
**Source: U.S. Outpatient Influenza-like Illness Surveillance Network (ILINet) sentinel provider visits.

Figure 3: Franklin County Resident ILI Defined ED Visits, 2019-20, Franklin County, OH**



**Chief complaint classifier category includes fever and cough OR chief complaint classifier category includes fever and chief complaint text includes sore throat OR chief complaint classifier category includes "ILI"

Figure 4: Percentage of Local Reporting and National Laboratory Positive Influenza Tests by Week, 2019-20



Columbus & Franklin County Influenza Monitoring Summary – Week 47, 2019 (11/17/2019-11/23/2019)

Figure 5: Franklin County Resident Respiratory ED Visits, 2019-20, Franklin County, OH

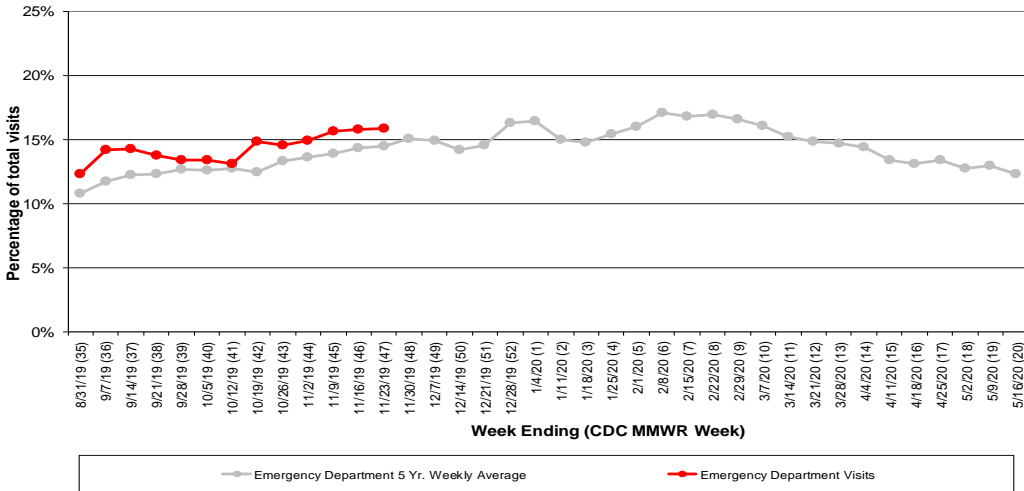


Figure 6: Selected Number of Over-the-Counter Medication Total Sales, 2019-20, Franklin County, OH

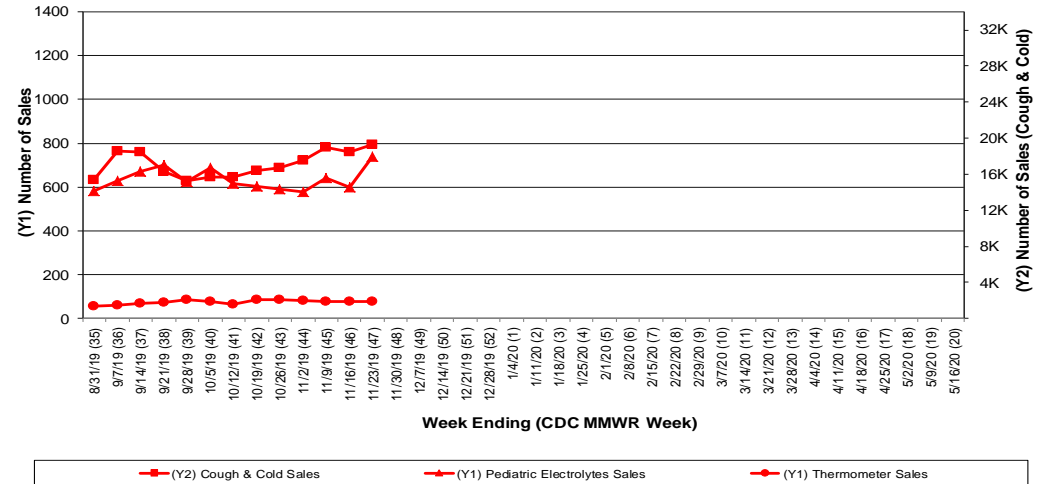
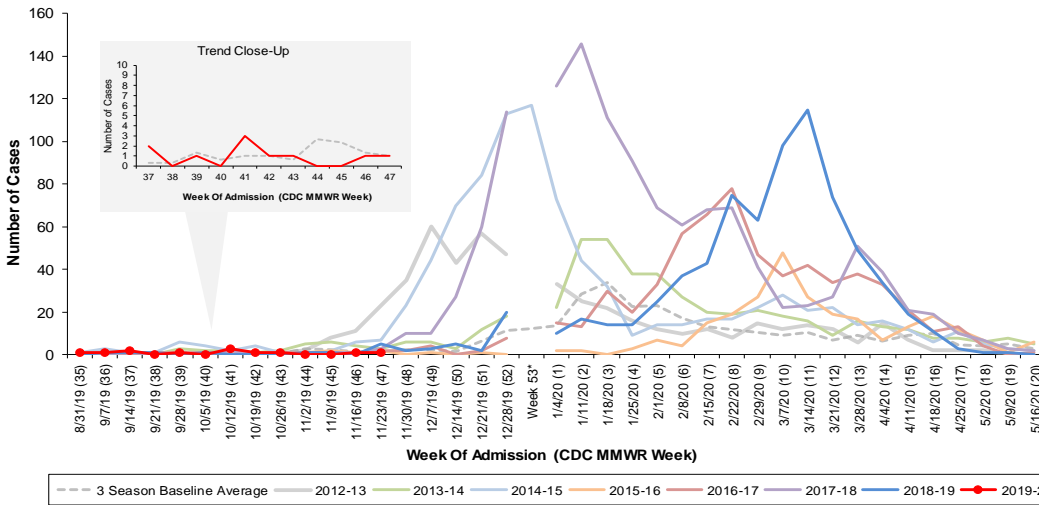


Figure 7: Columbus and Franklin County Jurisdiction Confirmed Influenza Associated Hospitalizations by Hospital Admission Week (As of 11/24/2019)



*Note: Certain years have a 53rd week (e.g., season 2014-15) based on CDCs MMWR Week..

Columbus and Franklin County, OH Jurisdiction Confirmed Influenza Hospitalization Cumulative Rates (per 100,000) by Age-Group and Admission Week, 2019-2020 Season

