

2019-2020 Columbus & Franklin County Seasonal Influenza Activity Weekly Summary (Week 11, Mar. 8th, 2020– Mar. 14th, 2020)

Highlights

- The COVID-19 outbreak may affect healthcare seeking behavior which in turn would impact certain flu surveillance data.
- In week 11 of 2020, individual flu activity indicator trends were mixed compared to last week. Due to similarities between some key indicators comprising the flu composite indicator to COVID-19 symptoms, the flu composite indicator is temporarily unavailable. Please see the individual indicators below.
- Geographic spread and local intensity designation (Click [here](#) for definitions) = WIDESPREAD, HIGH
- Local medical facility labs reported 3,067 tests run with 512 (16.7%) positive results for week 11 of 2020.
- The percentage of ED visits for both influenza-like-illness (ILI) and respiratory symptoms increased compared to last week.
- In week 11 of 2020, the trends for all individual local over-the-counter medication category sales tracked increased (increase in cough and cold, electrolyte, thermometer, chest rub, pediatric anti-fever, adult anti-fever, and throat lozenge sales) compared to last week.
- In week 11, laboratory confirmed flu activity as reported by clinical laboratories continued to decrease; however, influenza-like illness activity increased. Please [visit the CDC website for specific information](#).

Local Flu Activity Dashboard *(All data are preliminary and may change as updated reports are received.)*

Current Week's Composite Intensity Indicator*

Composite Intensity Indicator* Weekly Trend (Experimental)

Due to similarities between some key indicators comprising the flu composite indicator to COVID-19 symptoms, the flu composite indicator is temporarily unavailable. Please see the individual indicators below.

Of note, please see the divergence in recent trends between indicators specific to both flu lab positives and confirmed influenza associated hospitalizations and those indicators based on symptoms/syndromes and sales.

Indicators	Week Number(s) Available	Current Week Value	% Change Chart from Last Week ¹ (- +)	# Weeks ² ▲ ● ▼	General Trend Line Chart ³ (black = current, red = historical avg.)
Medical Facility Lab Data	35-11	16.7% Pos.	-19%	5 ▼	
athenaHealth® ⁴ Network PCP Flu or ILI Visit (Ohio)	Update not available at time of this report				
EMS Cold/Flu Symptom Runs	35-11	61 runs	24.5%	2 ▲	
School Absences	35-11	12.7% Absent	6.8%	1 ▲	
Hospital ED Data ⁵ :					
<i>Complaint Defined as ILI</i>	35-11	27.5% of All ED Visits	12.3%	2 ▲	
<i>Categorized as Respiratory</i>	35-11	23.0% of All ED Visits	19.5%	2 ▲	
Medication Data:					
<i>OTC Cough & Cold Sales</i>	35-11	37,326 Total Sales	62.9%	3 ▲	
<i>Thermometer</i>	35-11	589 Total Sales	>100%	2 ▲	
Confirmed Influenza Associated Hospitalizations ⁶	35-11	35 Admitted (821 Since wk. 35, 2019)	-43%	3 ▼	

Reportable Conditions (Cumulative Numbers as of Mar. 17, 2020)	2015	2016	2017	2018	2019	2020 YTD
Pediatric Influenza Associated Death Reported by Year (based on date of death)	0	0	0	0	1	0
Influenza Associated Hospitalizations (IAH) Reported by Admission Year ⁶	447	293	846	1,036	839	688
<i>IAH comparison by Flu Season (October through May or Weeks 35 - 20)</i>	<u>2014-15</u>	<u>2015-16</u>	<u>2016-17</u>	<u>2017-18</u>	<u>2018-19</u>	<u>2019-20*</u>
<i>*Current season figures (2019-20) are from week 35 through week 11 of 2020.</i>	871	265	619	1,235	746	816

¹Interpret with caution. Indicators with small numbers subject to large weekly percentage fluctuations.

²Number of weeks "▲" = Increase (>2%), "▼" = Decrease (>2%), "●" = Stable (-2% to +2%).

³Black line is current years data. Based on data availability, red line is historical average (excluding pandemic year).

⁴Data Source: Medical claims data from athenaHealth® (www.athenahealth.com). Rate of Flu or ILI visits to Ohio (statewide) athenaHealth® network primary care practices/physicians. Claims data are subject to filing and processing time lags. Historical data are updated when they are received.

⁵Franklin County, OH residents only (based on zipcode). NOTE: Excludes one hospital system included in the past due to technical changes affecting visit classification assignment and numbers.

⁶Confirmed cases only. Based on jurisdiction equal to Franklin County or City of Columbus and admission date available in ODRS.

Influenza Morbidity and Influenza-Like Illness (ILI) Reports

Updated statewide influenza and influenza-like-illness (ILI) visit data from athenaHealth® was not available at the time of this report. The week 11 percentage of all Emergency Department (ED) visits categorized as ILI increased compared to the previous week (Figure 3) and is above its historic baseline for the week.

Nationally, during week 11 of 2020, 5.8% of patient visits reported through ILINet were due to influenza-like illness (ILI). The percentage increased compared to last week and is above the national baseline of 2.4% for week 11.

Laboratory Surveillance

During week 11 of 2020, reporting Franklin County sentinel medical facility laboratories tested 3,067 specimens, with 512 (16.7%) positive (Figure 4). The total number of tests done by local reporting labs from week 35 of 2019 through week 11 of 2020 is 55,222 with 11,931 (21.6%) positives (5,114 type A, 6,622 type B, 0 type A and B, 195 type unknown).

Nationally in week 11 of 2020, clinical laboratories reported 45,167 specimens tested for influenza viruses, 6,927 (15.3%) of which were positive (5,297 type A, 1,630 type B). In week 11, public health laboratories reported testing 1,374 specimens, 413 of which were positive (333 type A – of which 264 were A(H1N1)pdm09, 20 were H3N2, and 49 were not subtyped; 80 type B – of which 0 were Yamagata lineage, 59 were Victoria lineage, and 21 where lineage was not performed). Please visit the CDC website for more information, including cumulative data.

In week 11 of 2020, Ohio clinical labs reported 75,071 specimens tested for influenza this season thus far. Positive results include: (553) A(H1N1)pdm09; (3) A/H3N2; (8,619) Flu A Not Subtyped, and (8,380) Flu B (through 3/14/2020). In week 11 of 2020, ODH Public Health Lab reported 886 positive influenza tests from various submitters this season so far. Positive results include: (570) A(H1N1)pdm09; (17) A/H3N2; (382) Influenza B (through 3/14/2020). Please visit the ODH website for more information.

ED Respiratory Visits

In the 11th week of 2020, the percentage of all ED visits categorized as respiratory increased compared to the percentage seen the previous week and is above its baseline for the week (Figure 5).

Over-the-Counter (OTC) Medication Sales

In week 11 of 2020, the trends for all individual local over-the-counter medication category sales tracked increased (increase in cough and cold, electrolyte, thermometer, chest rub, pediatric anti-fever, adult anti-fever, and throat lozenge sales) compared to last week.

Additional Influenza Activity Web Links:

Ohio Seasonal Flu Surveillance: <https://odh.ohio.gov>

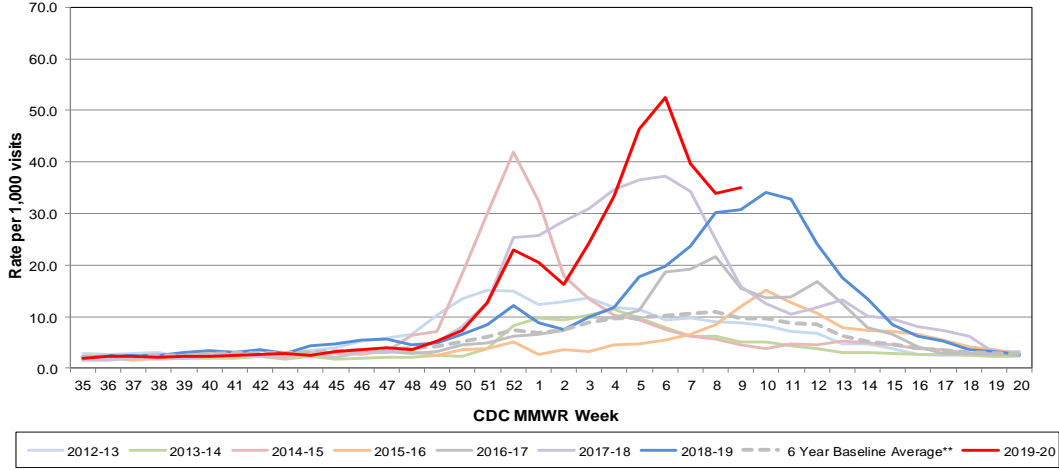
CDC National Seasonal Flu Surveillance Reports: <http://www.cdc.gov/flu/weekly/>

World Health Organization Situation Updates: http://www.who.int/influenza/surveillance_monitoring/en/

¹Note: County level athenaHealth® network primary care medical claims data is no longer available.

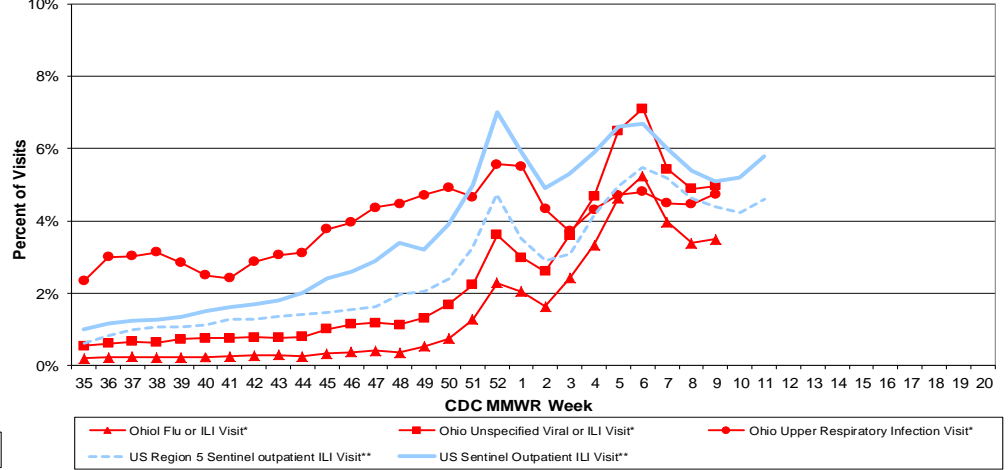
Columbus & Franklin County Influenza Monitoring Summary – Week 11, 2020 (3/8/2020-3/14/2020)

Figure 1: Ohio Outpatient Primary Care Provider Influenza or Influenza-Like-Illness Visit Rate*



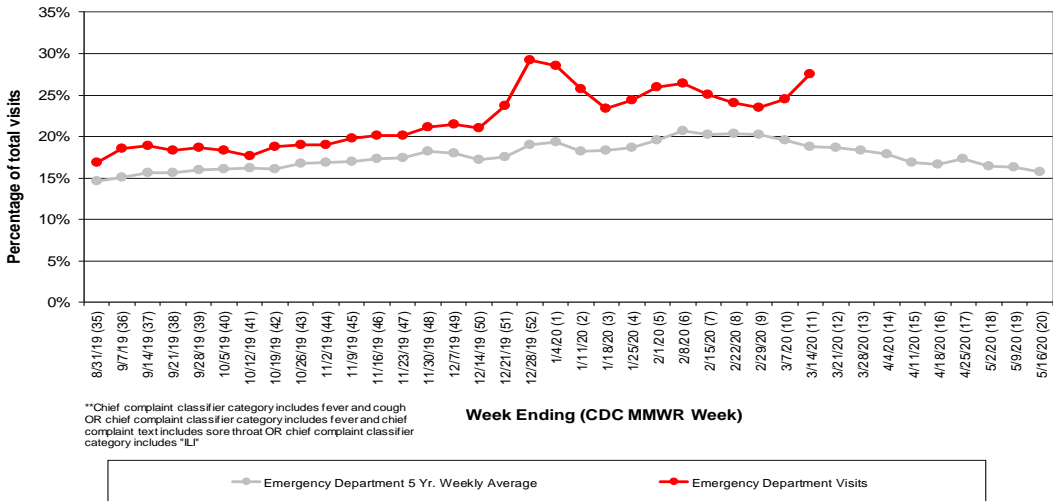
*Source: Ohio (Statewide) medical claims data from athenaHealth®
 **Seasons: 2010-11, 2011-12, 2012-13, 2013-14, 2015-16, 2016-17
 Note: athenaHealth® claims data are subject to filing and processing time lags. Historical data are updated when they are received.

Figure 2: Percentage of Ohio Outpatient Participating Provider* and CDC National Outpatient Sentinel Health Care Provider visits for ILI and Associated Illnesses, 2019-20**



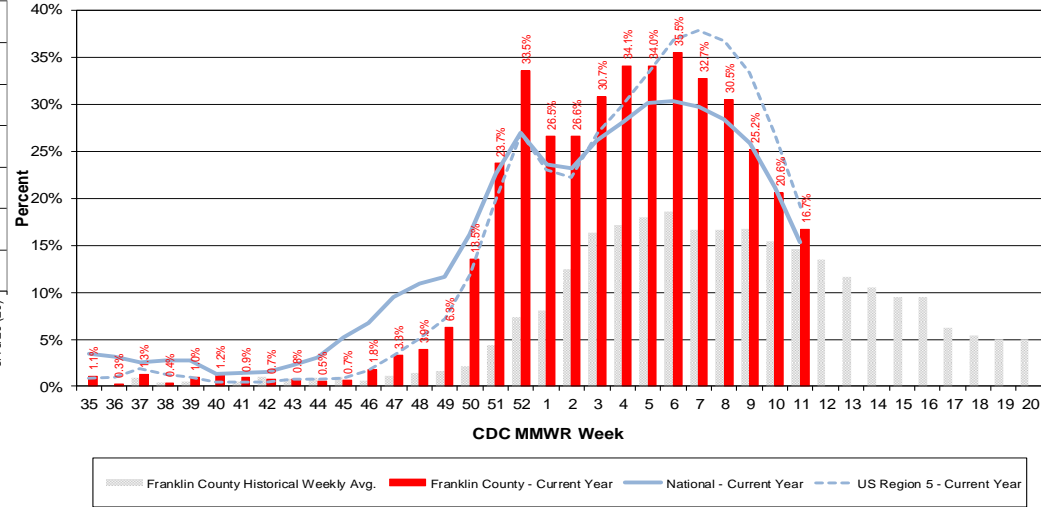
*Source: Ohio (statewide) medical claims data provided by athenaHealth®. Data are subject to filing and processing time lags. Historical data are updated when received.
 **Source: U.S. Outpatient Influenza-like Illness Surveillance Network (ILINet) sentinel provider visits.

Figure 3: Franklin County Resident ILI Defined ED Visits, 2019-20, Franklin County, OH**



**Chief complaint classifier category includes fever and cough OR chief complaint classifier category includes fever and chief complaint text includes sore throat OR chief complaint classifier category includes "ILI"

Figure 4: Percentage of Local Reporting and National Laboratory Positive Influenza Tests by Week, 2019-20



Columbus & Franklin County Influenza Monitoring Summary – Week 11, 2020 (3/8/2020-3/14/2020)

Figure 5: Franklin County Resident Respiratory ED Visits, 2019-20, Franklin County, OH

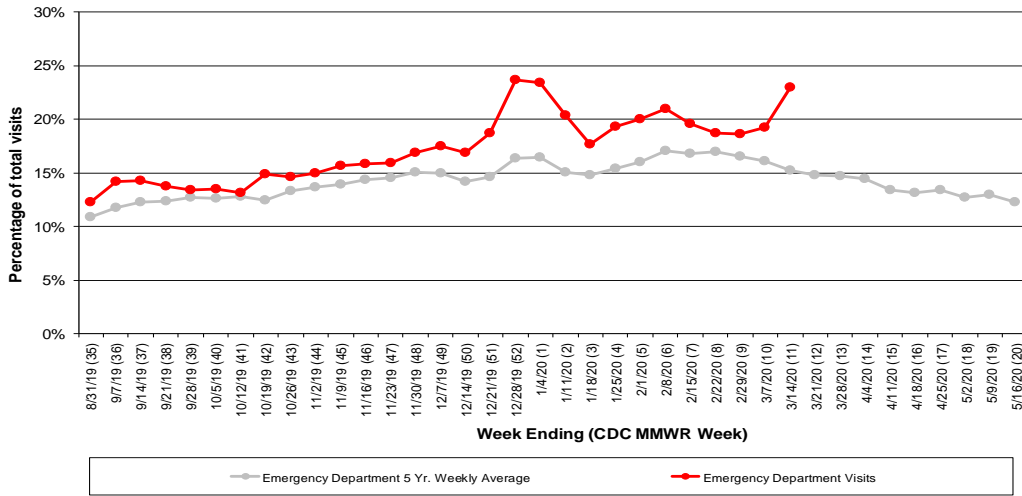


Figure 6: Selected Number of Over-the-Counter Medication Total Sales, 2019-20, Franklin County, OH

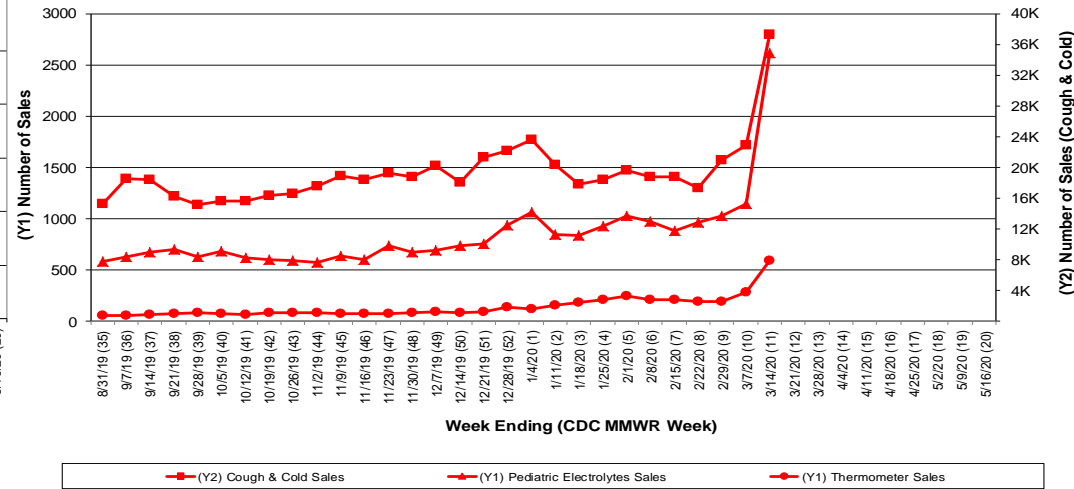
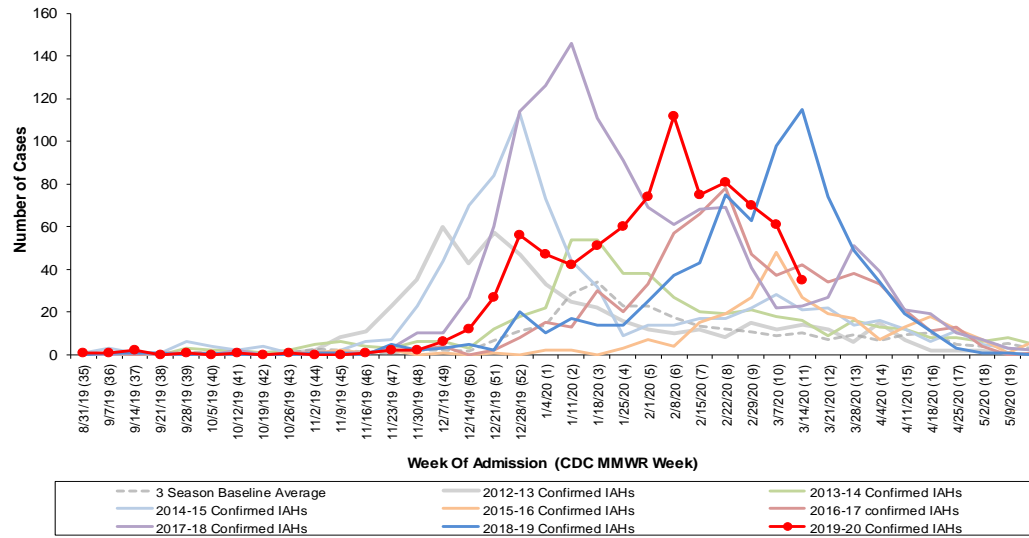


Figure 7: Columbus and Franklin County Jurisdiction Confirmed Influenza Associated Hospitalizations by Hospital Admission Week (As of 3/19/2020)



Columbus and Franklin County, OH Jurisdiction Confirmed Influenza Hospitalization Cumulative Rates (per 100,000) by Age-Group and Admission Week, 2019-2020 Season

