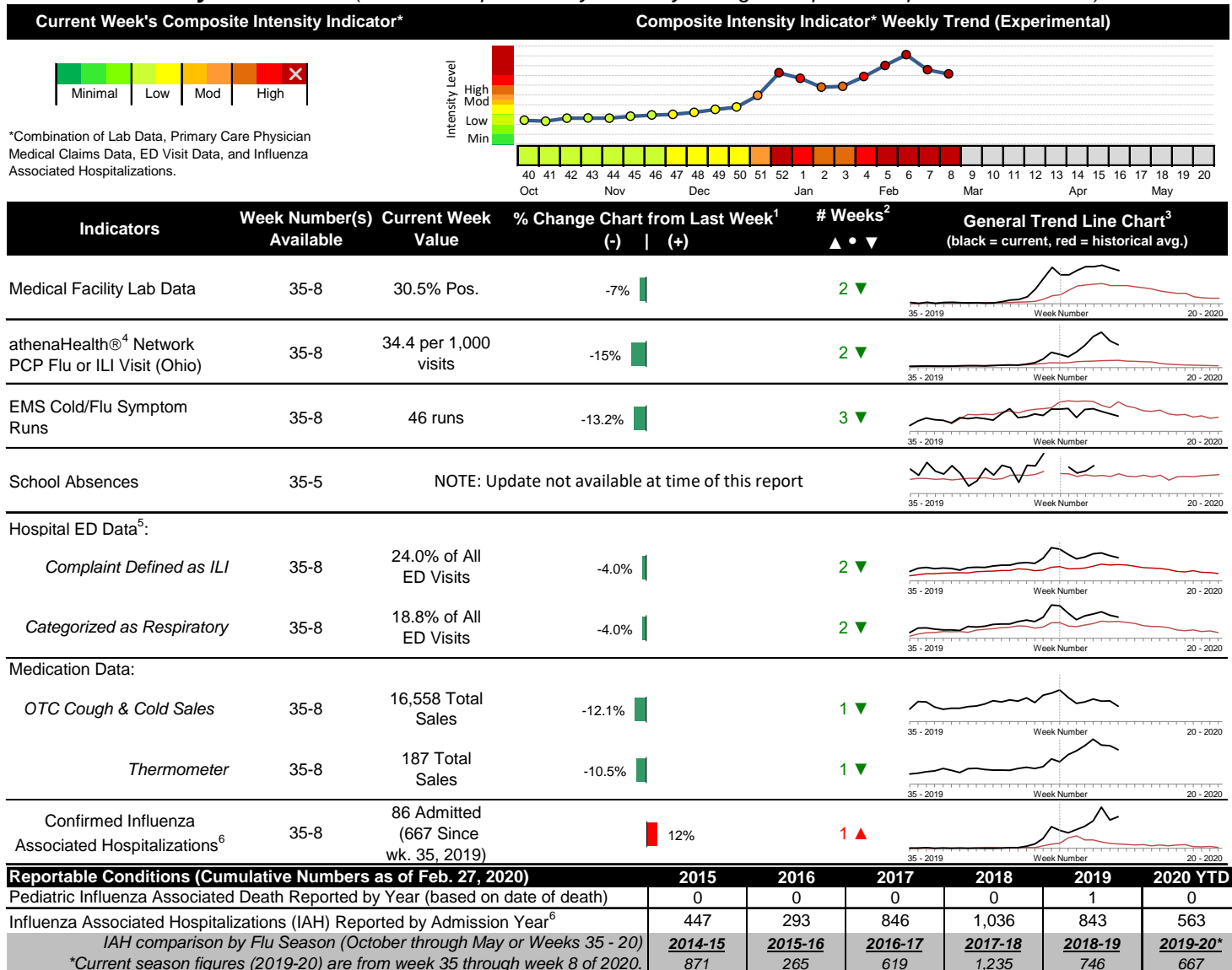


2019-2020 Columbus & Franklin County Seasonal Influenza Activity Weekly Summary (Week 8, Feb. 16th, 2020– Feb. 22nd, 2020)

Highlights

- In week 8 of 2020, the majority of individual flu activity indicator trends decreased compared to last week, but values remain elevated. Overall, local flu intensity (composite indicator) decreased (second week in a row) slightly compared to last week and remains HIGH.
- Geographic spread and local intensity designation (Click [here](#) for definitions) = WIDESPREAD, HIGH
- Local medical facility labs reported 2,839 tests run with 865 (30.5%) positive results for week 8 of 2020.
- The percentage of ED visits for both influenza-like-illness (ILI) and respiratory symptoms decreased compared to last week.
- In week 8 of 2020, the majority of trends for individual local over-the-counter medication category sales tracked decreased (decrease in cough and cold, thermometer, chest rub, pediatric anti-fever, adult anti-fever, and throat lozenge sales; increase in electrolyte sales) compared to last week.
- In week 8, U.S. key indicators that track flu activity remain high but decreased for the second week in a row. Please [visit the CDC website for specific information](#).

Local Flu Activity Dashboard *(All data are preliminary and may change as updated reports are received.)*



¹Interpret with caution. Indicators with small numbers subject to large weekly percentage fluctuations.
²Number of weeks "▲" = Increase (>2%), "▼" = Decrease (>2%), "●" = Stable (-2% to +2%).
³Black line is current years data. Based on data availability, red line is historical average (excluding pandemic year).
⁴Data Source: Medical claims data from athenaHealth® (www.athenahealth.com). Rate of Flu or ILI visits to Ohio (statewide) athenaHealth® network primary care practices/physicians. Claims data are subject to filing and processing time lags. Historical data are updated when they are received.
⁵Franklin County, OH residents only (based on zipcode). NOTE: Excludes one hospital system included in the past due to technical changes affecting visit classification assignment and numbers.
⁶Confirmed cases only. Based on jurisdiction equal to Franklin County or City of Columbus and admission date available in ODRS.

Influenza Morbidity and Influenza-Like Illness (ILI) Reports

In week 8, the preliminary Ohio¹ (statewide) influenza and influenza-like-illness (ILI) visit rate to athenaHealth® primary care providers (30.5 per 1,000 visits) decreased compared to the previous week and is above its baseline average for the week (Figure 1). The week 8 percentage of all Emergency Department (ED) visits categorized as ILI decreased compared to the previous week (Figure 3) and is above its historic baseline for the week.

Nationally, during week 8 of 2020, 5.5% of patient visits reported through ILINet were due to influenza-like illness (ILI). The percentage decreased compared to last week and is above the national baseline of 2.4% for week 8.

Laboratory Surveillance

During week 8 of 2020, reporting Franklin County sentinel medical facility laboratories tested 2,839 specimens, with 865 (30.5%) positive (Figure 4). The total number of tests done by local reporting labs from week 35 of 2019 through week 8 of 2020 is 46,569 with 10,137 (21.8%) positives (3,890 type A, 6,119 type B, 0 type A and B, 128 type unknown).

Nationally in week 8 of 2020, clinical laboratories reported 42,587 specimens tested for influenza viruses, 11,249 (26.4%) of which were positive (7,633 type A, 3,616 type B). In week 8, public health laboratories reported testing 1,783 specimens, 1,153 of which were positive (835 type A – of which 697 were A(H1N1)pdm09, 38 were H3N2, and 100 were not subtyped; 318 type B – of which 2 were Yamagata lineage, 277 were Victoria lineage, and 39 where lineage was not performed). Please visit the CDC website for more information, including cumulative data.

In week 8 of 2020, Ohio clinical labs reported 63,902 specimens tested for influenza this season thus far. Positive results include: (418) A(H1N1)pdm09; (3) A/H3N2; (6,773) Flu A Not Subtyped, and (7,575) Flu B (through 2/22/2020). In week 8 of 2020, ODH Public Health Lab reported 709 positive influenza tests from various submitters this season so far. Positive results include: (377) A(H1N1)pdm09; (17) A/H3N2; (315) Influenza B (through 2/22/2020). Please visit the ODH website for more information.

ED Respiratory Visits

In the 8th week of 2020, the percentage of all ED visits categorized as respiratory decreased compared to the percentage seen the previous week and is above its baseline for the week (Figure 5).

Over-the-Counter (OTC) Medication Sales

In week 8 of 2020, the majority of trends for individual local over-the-counter medication category sales tracked decreased (decrease in cough and cold, thermometer, chest rub, pediatric anti-fever, adult anti-fever, and throat lozenge sales; increase in electrolyte sales) compared to last week.

Additional Influenza Activity Web Links:

Ohio Seasonal Flu Surveillance: <https://odh.ohio.gov>

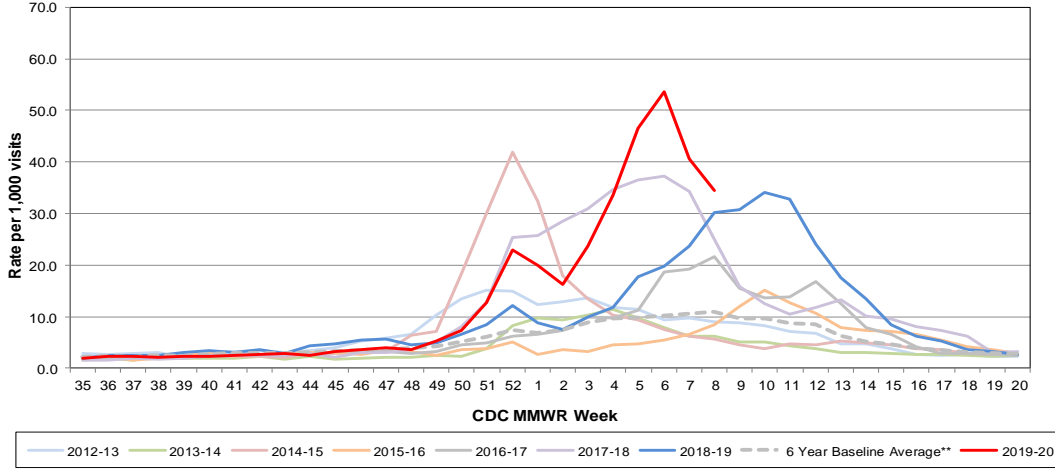
CDC National Seasonal Flu Surveillance Reports: <http://www.cdc.gov/flu/weekly/>

World Health Organization Situation Updates: http://www.who.int/influenza/surveillance_monitoring/en/

¹Note: County level athenaHealth® network primary care medical claims data is no longer available.

Columbus & Franklin County Influenza Monitoring Summary – Week 8, 2020 (2/16/2020-2/22/2020)

Figure 1: Ohio Outpatient Primary Care Provider Influenza or Influenza-Like-Illness Visit Rate*

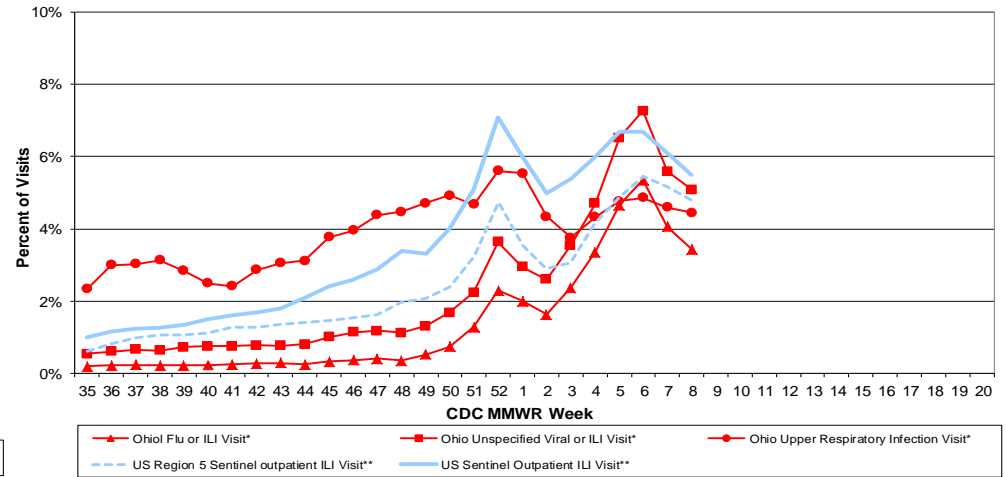


*Source: Ohio (Statewide) medical claims data from athenaHealth®

**Seasons: 2010-11, 2011-12, 2012-13, 2013-14, 2015-16, 2016-17

Note: athenaHealth® claims data are subject to filing and processing time lags. Historical data are updated when they are received.

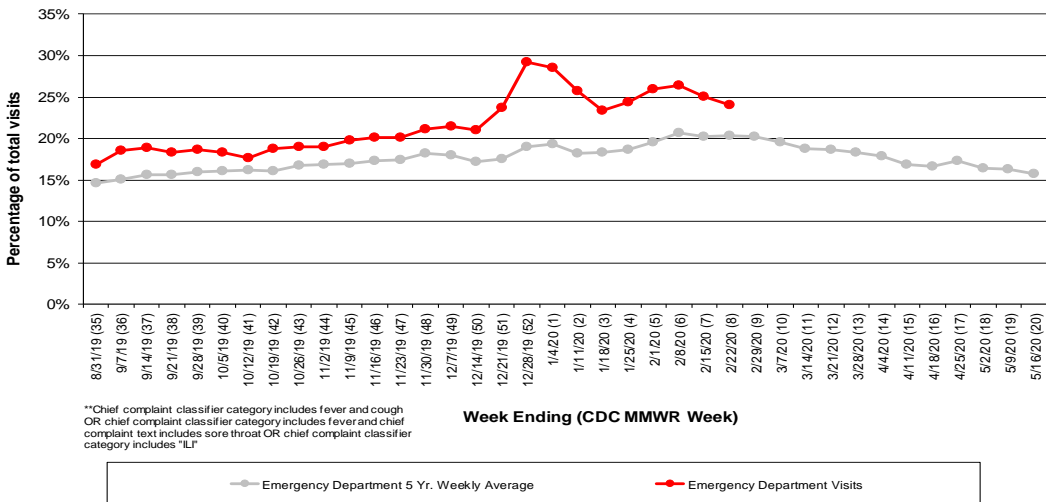
Figure 2: Percentage of Ohio Outpatient Participating Provider* and CDC National Outpatient Sentinel Health Care Provider visits for ILI and Associated Illnesses, 2019-20**



*Source: Ohio (statewide) medical claims data provided by athenaHealth®. Data are subject to filing and processing time lags. Historical data are updated when received.

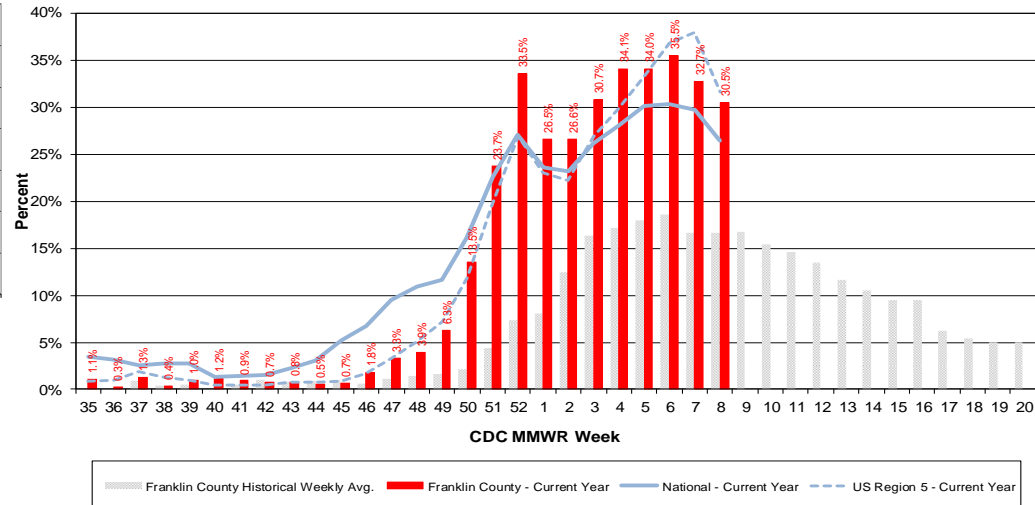
**Source: U.S. Outpatient Influenza-like Illness Surveillance Network (ILINet) sentinel provider visits.

Figure 3: Franklin County Resident ILI Defined ED Visits, 2019-20, Franklin County, OH**



**Chief complaint classifier category includes fever and cough OR chief complaint classifier category includes fever and chief complaint text includes sore throat OR chief complaint classifier category includes "ILI"

Figure 4: Percentage of Local Reporting and National Laboratory Positive Influenza Tests by Week, 2019-20



Columbus & Franklin County Influenza Monitoring Summary – Week 8, 2020 (2/16/2020-2/22/2020)

Figure 5: Franklin County Resident Respiratory ED Visits, 2019-20, Franklin County, OH

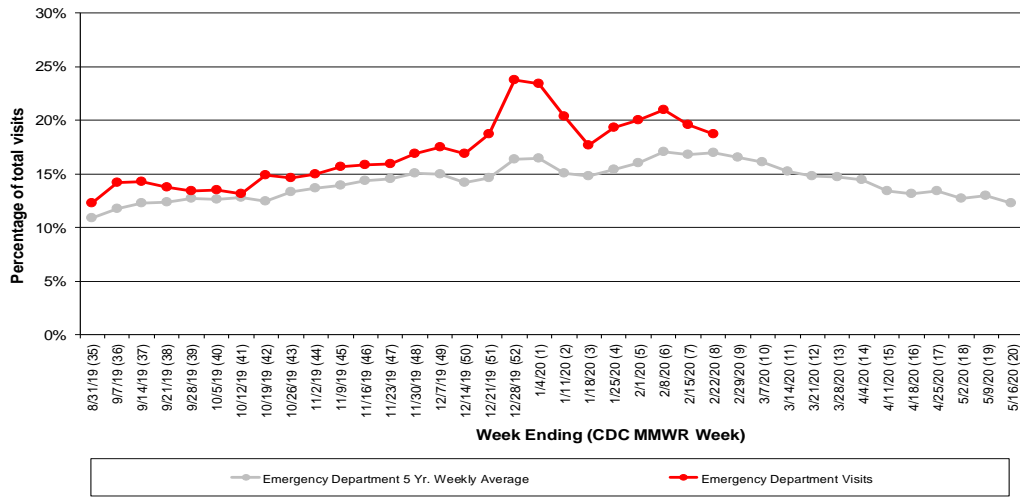


Figure 6: Selected Number of Over-the-Counter Medication Total Sales, 2019-20, Franklin County, OH

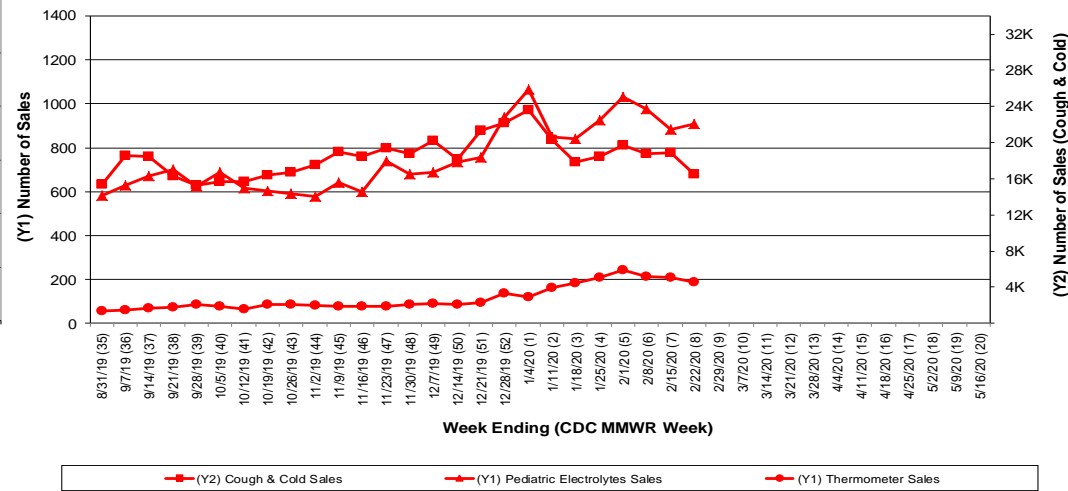
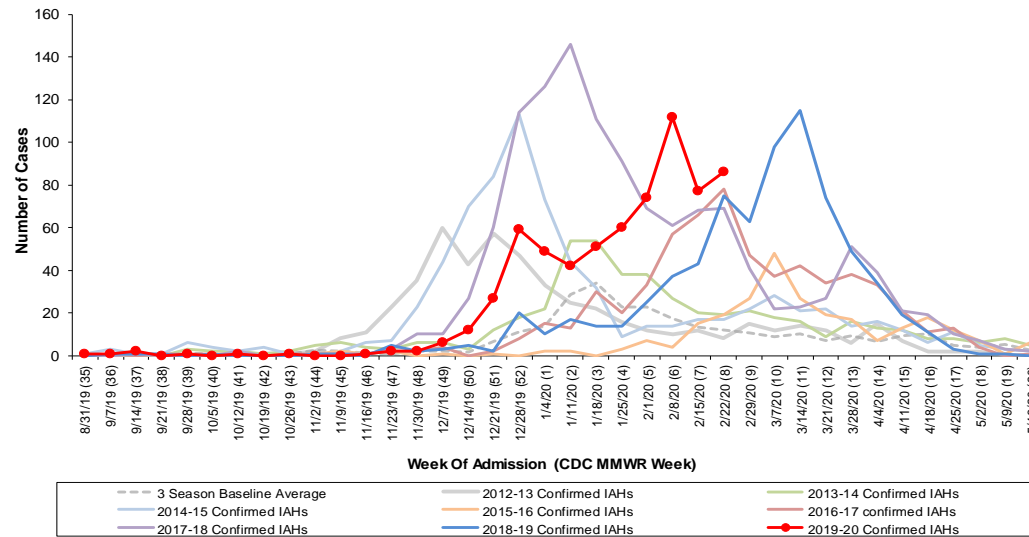


Figure 7: Columbus and Franklin County Jurisdiction Confirmed Influenza Associated Hospitalizations by Hospital Admission Week (As of 2/27/2020)



Columbus and Franklin County, OH Jurisdiction Confirmed Influenza Hospitalization Cumulative Rates (per 100,000) by Age-Group and Admission Week, 2019-2020 Season

